

The Rolling Stones Jumpin' Jack Flash:

Table des matières

Introduction:.....	2
Tablature basse page 1:.....	3
Tablature basse page 2:.....	4
Tablature basse page 3:.....	5
Partition basse page 1:.....	6
Partition basse page 2:.....	7
Partition basse page 3:.....	8
Partition batterie page 1:.....	9
Partition batterie page 2:.....	10
Partition batterie page 3:.....	11
Écriture batterie:.....	12

Introduction:

Attention ! pour jouer ce morceau il faut désaccorder la basse d'un demi-ton plus bas, ce qui nous donne de la grosse corde vers la petite corde: Eb / Ab / Db / Gb.

Pour la basse, il y a quelques effets de jeu et surtout beaucoup de syncopes et de contretemps.

Pour la partition de basse il y a 2 dièses à la clef: le Fa# et le Do#.

La partie de batterie est très répétitive et relativement facile malgré une originalité à savoir que le batteur remplace la cymbale charleston par le cercle du tom aigu sur les 2ème et 4èmes temps et quelques contretemps sont joués sur la peau de ce même tom.

Voici le lien pour écouter le morceau:

[the rolling stones jumpin jack flash](#)

Bon courage à tous !

Tablature basse page 2:

32  Musical notation for lines 32-35. Line 32 starts with a double bar line and a repeat sign. The notation includes fret numbers (2) and rhythmic values (quarter notes, eighth notes, and rests).


Couplet 2

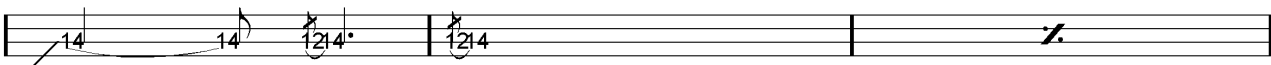
36  Musical notation for lines 36-39. Line 36 begins the 'Couplet 2' section. It features fret numbers (2) and rhythmic patterns.

40  Musical notation for lines 40-43. Line 40 continues the 'Couplet 2' section with various fret numbers and rhythmic values.

Refrain 2

44  Musical notation for lines 44-47. Line 44 begins the 'Refrain 2' section, featuring fret numbers (5, 4, 0) and rhythmic patterns.

48  Musical notation for lines 48-50. Line 48 continues the 'Refrain 2' section with fret numbers (5, 4, 0) and rhythmic values.

51  Musical notation for line 51. It shows fret numbers (14) and rhythmic values. The line ends with a double bar line and a repeat sign.

tournez la page.....

Tablature basse page 3:

3x
54

Pont
60

63

65

Couplet 3
69

6x
73

Refrain 3
85

89

92

ad lib Final
95

Partition basse page 2:

32

Couplet 2

36

40

Refrain 2

44

48

51

tournez la page.....

Partition basse page 3:

3x

54

Pont

60

63

65

Couplet 3

69

6x

73

Refrain 3

85

89

92

Final

ad lib

95

Partition batterie page 1:

♩ = 138

The Rolling Stones Jumpin' Jack Flash

Intro = 3 mesures sans batterie

Musical notation for the Intro section, measures 1 to 7. The notation is in 4/4 time and features a bass line with a triplet of eighth notes in the first measure, followed by a series of eighth notes and quarter notes. The drum part is indicated by 'x' marks above the notes, showing a consistent pattern of eighth notes. Measure 7 ends with a double bar line and a repeat sign.

Gimmick

Musical notation for the Gimmick section, measures 10 to 13. The notation continues the bass line and drum pattern established in the Intro. Measure 10 starts with a double bar line. The drum part remains consistent with eighth notes.

Couplet 1

Musical notation for the first Couplet, measures 14 to 17. The notation continues the bass line and drum pattern. Measure 14 starts with a double bar line. The drum part remains consistent with eighth notes.

Musical notation for the second Couplet, measures 18 to 21. The notation continues the bass line and drum pattern. Measure 18 starts with a double bar line. The drum part remains consistent with eighth notes.

Refrain 1

Musical notation for the first Refrain, measures 22 to 25. The notation continues the bass line and drum pattern. Measure 22 starts with a double bar line. The drum part remains consistent with eighth notes. Measures 23, 24, and 25 are marked with a double bar line and a repeat sign.

Musical notation for the second Refrain, measures 26 to 28. The notation continues the bass line and drum pattern. Measure 26 starts with a double bar line. The drum part remains consistent with eighth notes. Measure 28 is marked with a double bar line and a repeat sign.

Musical notation for the third Refrain, measures 29 to 32. The notation continues the bass line and drum pattern. Measure 29 starts with a double bar line. The drum part remains consistent with eighth notes.

Partition batterie page 2:

32

Couplet 2

36

40

Refrain 2

44

48

51

3x
54

Pont

60

Partition batterie page 3:

63

Musical notation for measures 63 and 64. Measure 63 contains six eighth notes with 'x' marks above them. Measure 64 contains six eighth notes.

65

Musical notation for measures 65 and 66. Measure 65 contains six eighth notes with 'x' marks above them. Measure 66 contains six eighth notes.

Couplet 3

69

Musical notation for measures 69, 70, 71, and 72. Measure 69 contains four eighth notes with 'x' marks above them. Measures 70, 71, and 72 are marked with a double bar line and a repeat sign.

6x
73

Musical notation for measures 73, 74, 75, and 76. Measure 73 contains four eighth notes with 'x' marks above them. Measures 74, 75, and 76 are marked with a double bar line and a repeat sign.

Refrain 3

85

Musical notation for measures 85, 86, 87, and 88. Measure 85 contains four eighth notes with 'x' marks above them. Measures 86 and 87 are marked with a double bar line and a repeat sign. Measure 88 contains four eighth notes with 'x' marks above them.

89

Musical notation for measures 89, 90, 91, and 92. Measure 89 contains four eighth notes with 'x' marks above them. Measure 90 is marked with a double bar line and a repeat sign. Measures 91 and 92 contain four eighth notes with 'x' marks above them.

92

Musical notation for measures 92, 93, 94, and 95. Measure 92 contains four eighth notes with 'x' marks above them. Measure 93 is marked with a double bar line and a repeat sign. Measure 94 is marked with a double bar line and a repeat sign. Measure 95 contains four eighth notes with 'x' marks above them.

Final

ad lib
95

Musical notation for measures 95, 96, 97, and 98. Measure 95 contains four eighth notes with 'x' marks above them. Measures 96 and 97 are marked with a double bar line and a repeat sign. Measure 98 contains four eighth notes with 'x' marks above them.

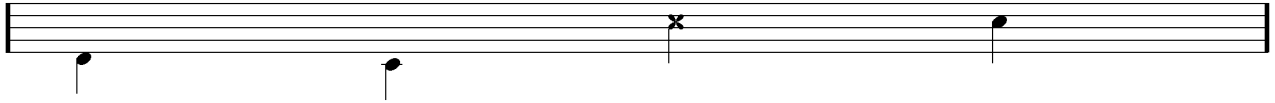
Écriture batterie:

bd 1

bd 2

rim-shot

sd

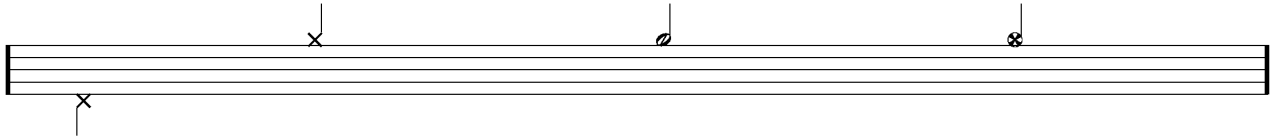


HH Pied

HH fermée

HH entrouverte

HH ouverte

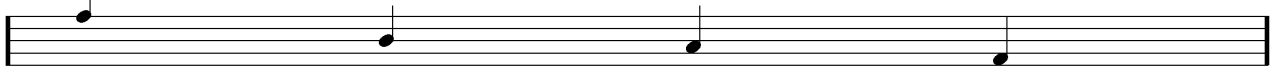


tom 1

tom 2

tom 3

tom 4

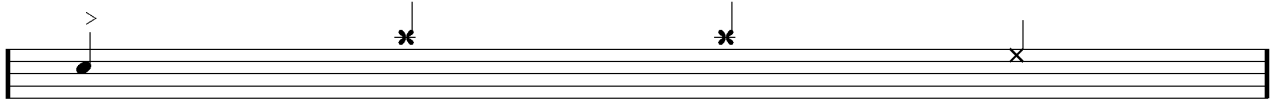


accent

note mutée

crash

cloche

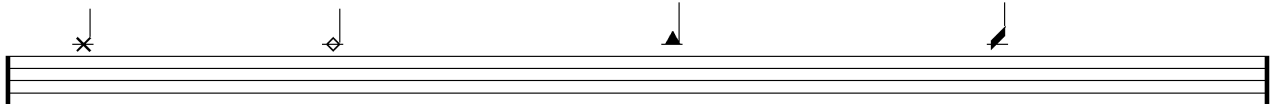


ride

dôme de cymbale

chinoise

splash



flas

note muette

