

**The Rolling Stones It's All Over Now:**

**Table des matières**

Introduction:.....	2
Tablature basse page 1:.....	3
Tablature basse page 2:.....	4
Partition basse page 1:.....	5
Partition basse page 2:.....	6
Partition batterie page 1:.....	7
Partition batterie page 2:.....	8
Écriture batterie:.....	9

### **Introduction:**

**Attention ! pour les deux instruments: toutes les croches doivent être interprétées sur un rythme ternaire (rythme shuffle).**

La ligne de basse est assez répétitive, les principales difficultés sont les contretemps, les glissés, les notes courtes et les syncopes.

Pour la partition il y a 1 dièse à la clef: le Fa#.

La partie de batterie est également répétitive mais le tempo est très rapide. Les difficultés sont les accents, les contretemps à la grosse caisse et pas mal de breaks différents en triolets et même en sextolets. Attention à bien mettre en place le triolet de noires sur le dernier break.

Voici le lien pour écouter le morceau:

[The Rolling Stones It's All Over Now](#)

Bon courage à tous !

# Tablature basse page 1:

Attention ! toutes les croches doivent être interprétées sur un rythme ternaire (rythme shuffle).

## The Rolling Stones It's All Over Now

♩=♩♩

Intro

1. 3 1 3 5

1. 3x Couplets 1 / 2

9. 3 5 7 3 5. 7 7 5 7 5

9

21. 3 5 7 3 5. 7 5 5 7 3 5 7 3 5. 7 7 5 7

21

25. 5 9. 9 | 7. 9 7 9 7 | 8 7 7 7 | 5. 7 5 7 7

25

29. 3 5 7 3 5. 7 7 5 7 5 | 3 5 7 3 5. 7 7 6

29

Refrains 1 / 2 .

33. 5 7 9 7 9 | 7. 9 9 7 9 7 | 8 7 7 7 | 5. 7 7 5 7 7

33

37. 3 5 7 3 5. 7 7 5 7 5 | 3 5 7 3 5. 7 7 5

37

72. 5. 7 7

72

Solo Guitare

73. 3. 6 6 5 | 5. 7 7 5 7

73

77. 3. 6 6 5 | 5. 7 7 5 7 | 3. 7 7 5 | 5. 7 7 5 7

77

81. 8 7 5 | 5. 7 7 5 7

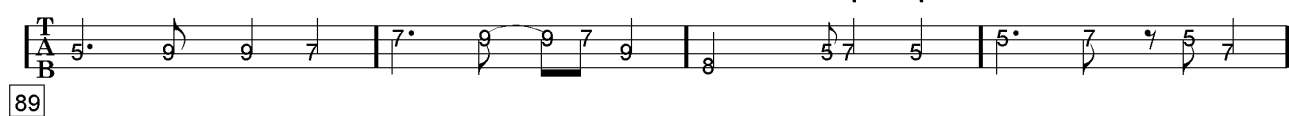
81

85. 3. 6 6 5 | 5. 7 7 5 7 | 3. 7 7 5 | 5. 7 7 5 7

85

## Tablature basse page 2:

Attention ! toutes les croches doivent être interprétées sur un rythme ternaire (rythme shuffle).



3x Couplet 3



Refrain 3



Refrain 4



ad lib. Final



## Partition basse page 1:

Attention ! toutes les croches doivent être interprétées sur un rythme ternaire (rythme shuffle).

### The Rolling Stones It's All Over Now

♩ = ♪♪

Intro



1



9



21



25



29

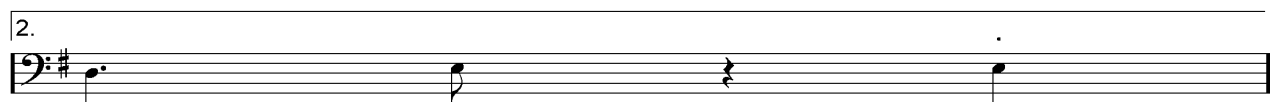
Refrains 1 / 2 .



33

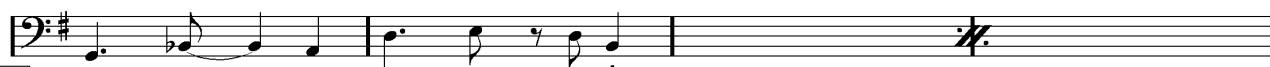


37



72

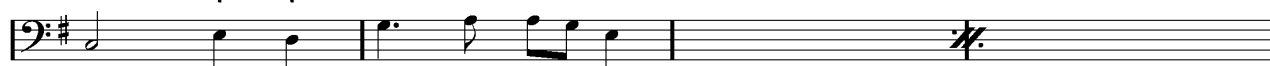
Solo Guitare



73



77



81



85

## Partition basse page 2:

Attention ! toutes les croches doivent être interprétées sur un rythme ternaire (rythme shuffle).

89

93

3x Couplet 3

97

109

113

117

Refrain 3

121

125

Refrain 4

129

133

ad lib. Final

137

141

## Partition batterie page 1:

Attention ! toutes les croches doivent être interprétées sur un rythme ternaire (rythme shuffle).

♩ = 200

### The Rolling Stones It's All Over Now

Intro

Musical notation for the Intro, starting at measure 1. It features a 4/4 time signature and a key signature of one flat. The notation includes a double bar line with repeat dots, followed by a series of rests and a single eighth note on the second staff.

1  
Couplet 1 / 3

Musical notation for Couplet 1 / 3, measures 1-8. It features a 4/4 time signature and a key signature of one flat. The notation includes a double bar line with repeat dots, followed by a series of eighth notes and rests, with 'x' marks above the notes indicating drum hits. Measure 8 ends with a double bar line and repeat dots.

Musical notation for Couplet 1 / 3, measures 9-20. It features a 4/4 time signature and a key signature of one flat. The notation includes a double bar line with repeat dots, followed by a series of eighth notes and rests, with 'x' marks above the notes indicating drum hits. Measure 20 ends with a double bar line and repeat dots.

Musical notation for Couplet 1 / 3, measures 21-28. It features a 4/4 time signature and a key signature of one flat. The notation includes a double bar line with repeat dots, followed by a series of eighth notes and rests, with 'x' marks above the notes indicating drum hits. Measure 28 ends with a double bar line and repeat dots.

Musical notation for Couplet 1 / 3, measures 29-32. It features a 4/4 time signature and a key signature of one flat. The notation includes a double bar line with repeat dots, followed by a series of eighth notes and rests, with 'x' marks above the notes indicating drum hits. Measure 32 ends with a double bar line and repeat dots.

Refrains 1 / 3

Musical notation for Refrains 1 / 3, measures 33-36. It features a 4/4 time signature and a key signature of one flat. The notation includes a double bar line with repeat dots, followed by a series of eighth notes and rests, with 'x' marks above the notes indicating drum hits. Measure 36 ends with a double bar line and repeat dots.

Musical notation for Refrains 1 / 3, measures 37-40. It features a 4/4 time signature and a key signature of one flat. The notation includes a double bar line with repeat dots, followed by a series of eighth notes and rests, with 'x' marks above the notes indicating drum hits. Measure 40 ends with a double bar line and repeat dots.

Couplet 2

Musical notation for Couplet 2, measures 41-50. It features a 4/4 time signature and a key signature of one flat. The notation includes a double bar line with repeat dots, followed by a series of eighth notes and rests, with 'x' marks above the notes indicating drum hits. Measure 50 ends with a double bar line and repeat dots.

Musical notation for Couplet 2, measures 51-56. It features a 4/4 time signature and a key signature of one flat. The notation includes a double bar line with repeat dots, followed by a series of eighth notes and rests, with 'x' marks above the notes indicating drum hits. Measure 56 ends with a double bar line and repeat dots.

Musical notation for Couplet 2, measures 57-60. It features a 4/4 time signature and a key signature of one flat. The notation includes a double bar line with repeat dots, followed by a series of eighth notes and rests, with 'x' marks above the notes indicating drum hits. Measure 60 ends with a double bar line and repeat dots.

Musical notation for Couplet 2, measures 61-66. It features a 4/4 time signature and a key signature of one flat. The notation includes a double bar line with repeat dots, followed by a series of eighth notes and rests, with 'x' marks above the notes indicating drum hits. Measure 66 ends with a double bar line and repeat dots.

## Partition batterie page 2:

Attention ! toutes les croches doivent être interprétées sur un rythme ternaire (rythme shuffle).

Refrain 2

65

69

Solo Guitare = crash 1ère fois seulement

73

85

89

93

127

Refrain 4

129

133

Final

ad lib. 137

141



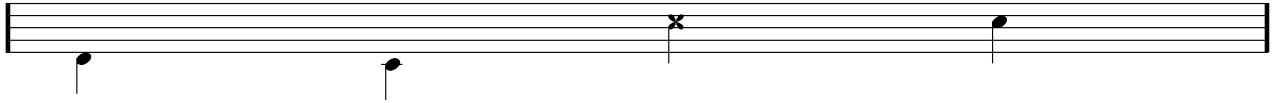
## Écriture batterie:

bd 1

bd 2

rim-shot

sd

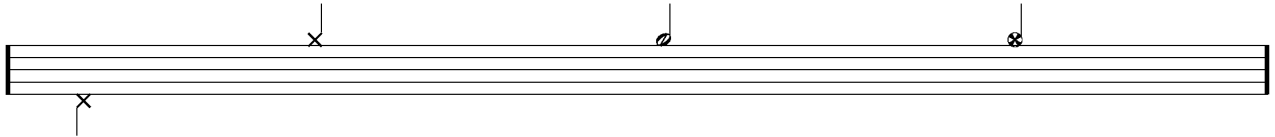


HH Pied

HH fermée

HH entrouverte

HH ouverte

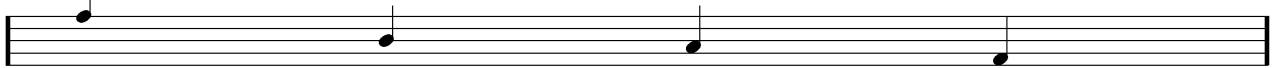


tom 1

tom 2

tom 3

tom 4

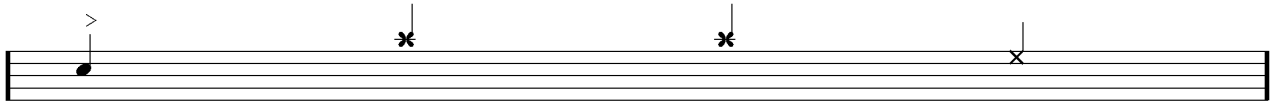


accent

note mutée

crash

cloche

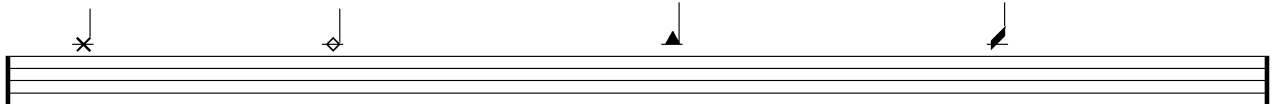


ride

dôme de cymbale

chinoise

splash



flas

note muette

