

The J. Geils Band Centerfold:

Table des matières

Introduction:.....2
Tablature basse:.....3
Partition basse:.....4
Partition batterie page 1:.....5
Partition batterie page 2:.....6
Écriture batterie:.....7
Titres disponibles:.....8

Introduction:

Une ligne de basse très répétitive, les seules difficultés sont les accents, les contretemps, les hammers, les pull-offs et une syncope.

La partie de batterie est très répétitive également, les principales difficultés sont les contretemps à la grosse caisse, les flas, les breaks en doubles-croches et une syncope sur la cymbale crash, notez que dans l'intro 1 j'ai remplacé les claps par la caisse claire.

Voici le lien pour écouter le morceau:

[The J. Geils Band Centerfold](#)

Bon courage à tous !

Partition basse:

J. Geils Band Centerfold

Intro 1

1

Intro 2

5

♩ Couplets 1 / 2 / 3

9

13

Pré-Refrains 1 / 2 / 3

17

Refrains 1 / 2 / 3

21

25

la 3ème fois = Ⓢ

Pont 1

49

53

Ⓢ Pont 2

77

ad lib Final

81

Partition batterie page 1:

J. Geils Band Centerfold

♩ = 117

Intro 1

Musical notation for Intro 1, measures 1-4. The notation is on a single staff with a 4/4 time signature. It begins with a quarter rest, followed by a quarter note, a quarter rest, and another quarter note. The second and third measures contain a double bar line with a slash through it, indicating a repeat. The fourth measure contains a quarter rest followed by a quarter note, an eighth note, and a sixteenth note.

Intro 2

Musical notation for Intro 2, measures 5-8. The notation is on a single staff with a 4/4 time signature. It begins with a quarter note, followed by a quarter note, a quarter note, and a quarter note. The second and third measures contain a double bar line with a slash through it, indicating a repeat. The fourth measure contains a quarter note, an eighth note, and a sixteenth note.

Couplet 1

Musical notation for Couplet 1, measures 9-12. The notation is on a single staff with a 4/4 time signature. It begins with a quarter note, followed by a quarter note, a quarter note, and a quarter note. The second and third measures contain a double bar line with a slash through it, indicating a repeat. The fourth measure contains a quarter note, an eighth note, and a sixteenth note.

Musical notation for Couplet 1, measures 13-16. The notation is on a single staff with a 4/4 time signature. It begins with a quarter note, followed by a quarter note, a quarter note, and a quarter note. The second and third measures contain a double bar line with a slash through it, indicating a repeat. The fourth measure contains a quarter note, an eighth note, and a sixteenth note.

Pré-Refrain 1

Musical notation for Pré-Refrain 1, measures 17-20. The notation is on a single staff with a 4/4 time signature. It begins with a quarter note, followed by a quarter note, a quarter note, and a quarter note. The second and third measures contain a double bar line with a slash through it, indicating a repeat. The fourth measure contains a quarter note, an eighth note, and a sixteenth note.

Refrain 1

Musical notation for Refrain 1, measures 21-24. The notation is on a single staff with a 4/4 time signature. It begins with a quarter note, followed by a quarter note, a quarter note, and a quarter note. The second and third measures contain a double bar line with a slash through it, indicating a repeat. The fourth measure contains a quarter note, an eighth note, and a sixteenth note.

Musical notation for Refrain 1, measures 25-28. The notation is on a single staff with a 4/4 time signature. It begins with a quarter note, followed by a quarter note, a quarter note, and a quarter note. The second and third measures contain a double bar line with a slash through it, indicating a repeat. The fourth measure contains a quarter note, an eighth note, and a sixteenth note.

Couplet 2

Musical notation for Couplet 2, measures 29-32. The notation is on a single staff with a 4/4 time signature. It begins with a quarter note, followed by a quarter note, a quarter note, and a quarter note. The second and third measures contain a double bar line with a slash through it, indicating a repeat. The fourth measure contains a quarter note, an eighth note, and a sixteenth note.

Musical notation for Couplet 2, measures 33-36. The notation is on a single staff with a 4/4 time signature. It begins with a quarter note, followed by a quarter note, a quarter note, and a quarter note. The second and third measures contain a double bar line with a slash through it, indicating a repeat. The fourth measure contains a quarter note, an eighth note, and a sixteenth note.

Pré-Refrain 2

Musical notation for Pré-Refrain 2, measures 37-40. The notation is on a single staff with a 4/4 time signature. It begins with a quarter note, followed by a quarter note, a quarter note, and a quarter note. The second and third measures contain a double bar line with a slash through it, indicating a repeat. The fourth measure contains a quarter note, an eighth note, and a sixteenth note.

Partition batterie page 2:

Refrain 2

41

45

Pont 1

49

Couplet 3

57

61

Pré-Refrain 3

65

Refrain 3

69

73

Pont 2

77

Final

81 *ad lib.*

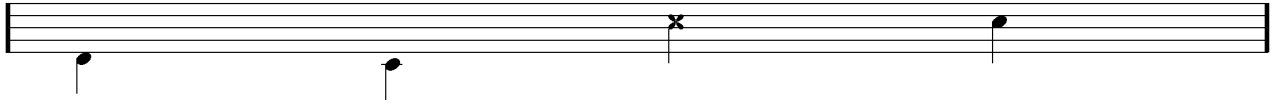
Écriture batterie:

bd 1

bd 2

rim-shot

sd

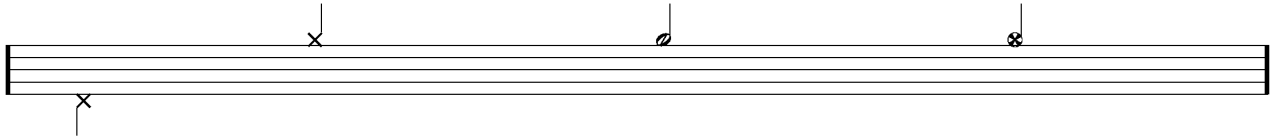


HH Pied

HH fermée

HH entrouverte

HH ouverte

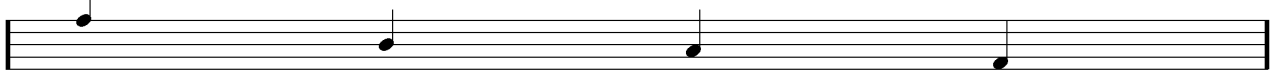


tom 1

tom 2

tom 3

tom 4

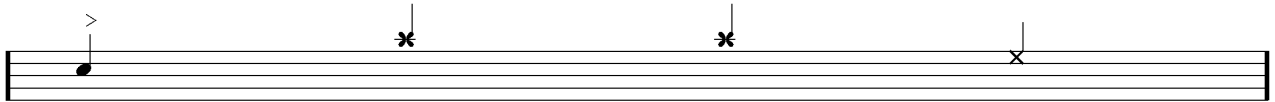


accent

note mutée

crash

cloche

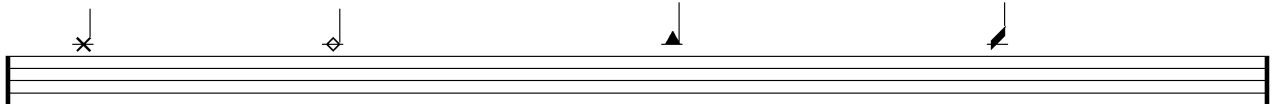


ride

dôme de cymbale

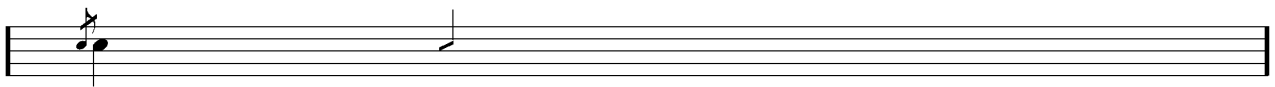
chinoise

splash



flas

note muette



Titres disponibles:

Vous pouvez cliquer sur ce lien pour avoir directement accès à mon nouveau blog pour sauvegarder tous les titres que j'ai édités ou pour me contacter via la page de contact:

<https://manutablaturesdebasse.com/>