

The Hollies Bus Stop:

Table des matières

Introduction:.....2
Tablature basse page 1:.....3
Tablature basse page 2:.....4
Partition basse page 1:.....5
Partition basse page 2:.....6
Partition batterie page 1:.....7
Partition batterie page 2:.....8
Écriture batterie:.....9

Introduction:

Les principales difficultés de la partie de basse ce sont les glissés en doubles-croches entre le Si et le Do (2ème et 3ème cases pour la tablature) et le rythme très syncopé pour la plupart des mesures de ce morceau.

Une partie de batterie très facile, les seules difficultés ce sont les breaks en doubles-croches sur la caisse claire et juste deux passages sur le tom bass.

Voici le lien pour écouter le morceau:

[the hollies bus stop](#)

Bon courage à tous !

Tablature basse page 1:

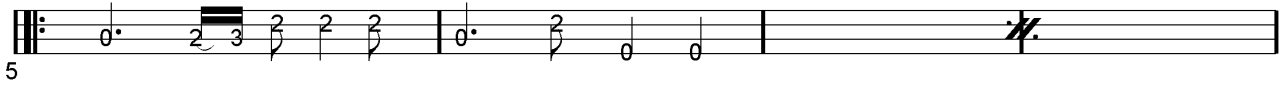
The Hollies Bus Stop

Intro



Musical notation for the Intro section, consisting of four measures of whole rests on a five-line staff. The time signature is 3/4.

Couplets 1 / 3



Musical notation for the first couplet, starting at measure 5. It features a sequence of notes: a dotted quarter note, a triplet eighth note, a quarter note, and a half note, followed by a double bar line with a repeat sign.



Musical notation for the second couplet, starting at measure 9. It continues the sequence of notes from the first couplet.

Couplets 2 / 4

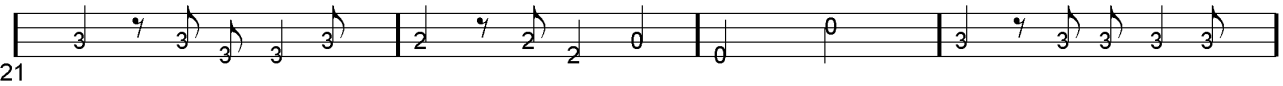


Musical notation for the third couplet, starting at measure 13. It features a sequence of notes: a dotted quarter note, a quarter note, a quarter note, and a half note, followed by a double bar line with a repeat sign.



Musical notation for the fourth couplet, starting at measure 17. It continues the sequence of notes from the third couplet.

1. Refrain 1



Musical notation for the first refrain, starting at measure 21. It features a sequence of notes: a dotted quarter note, a quarter note, a quarter note, and a half note, followed by a double bar line with a repeat sign.



Musical notation for the second refrain, starting at measure 25. It continues the sequence of notes from the first refrain.

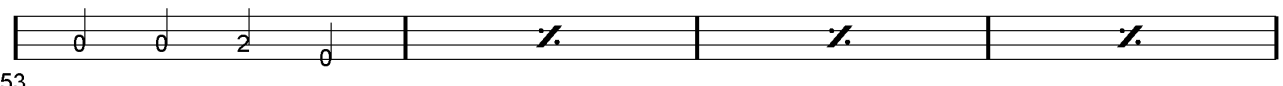


Musical notation for the third refrain, starting at measure 29. It continues the sequence of notes from the first refrain.



Musical notation for the fourth refrain, starting at measure 33. It continues the sequence of notes from the first refrain.

2. Chorus



Musical notation for the chorus, starting at measure 53. It features a sequence of notes: a dotted quarter note, a quarter note, a quarter note, and a half note, followed by a double bar line with a repeat sign.

Tablature basse page 2:



57

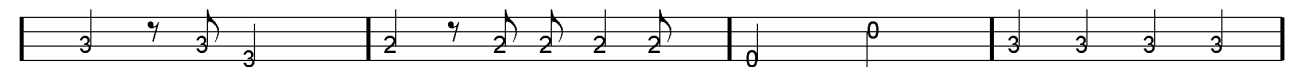
Refrain 2



61



65

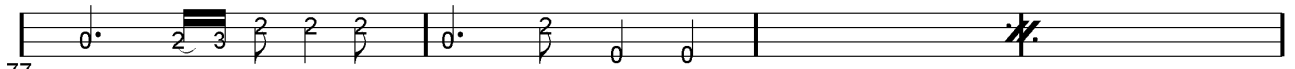


69



73

Couplet 5



77

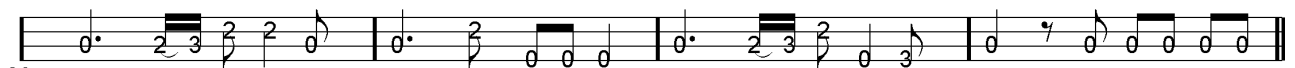


81

Couplet 6

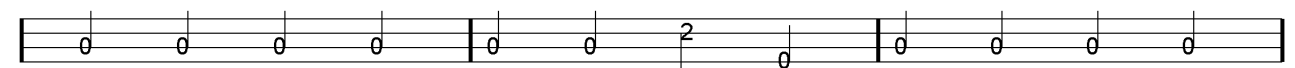


85

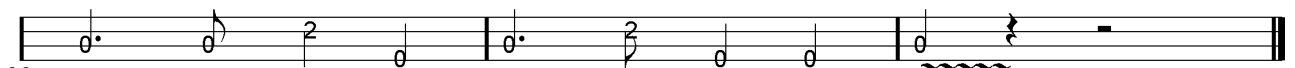


89

Final



93



96

Partition basse page 1:
The Hollies Bus Stop

Intro

1



Couplets 1 / 3

5



9



Couplets 2 / 4

13



17



1. Refrain 1

21



25



29

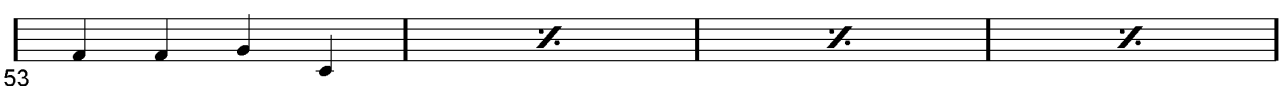


33



2. Chorus

53




Partition batterie page 1:

The Hollies Bus Stop

♩ = 136

Intro

1




Couplets 1 / 3

5




9



Couplets 2 / 4

13




17




1. Refrain 1

21



25



29



33

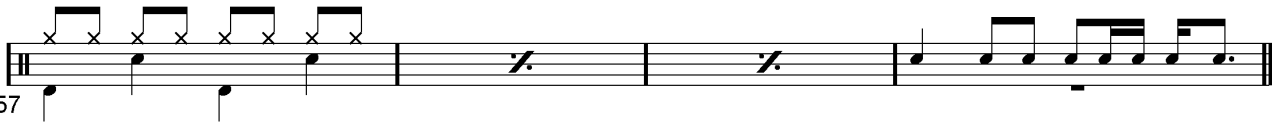


2. Chorus

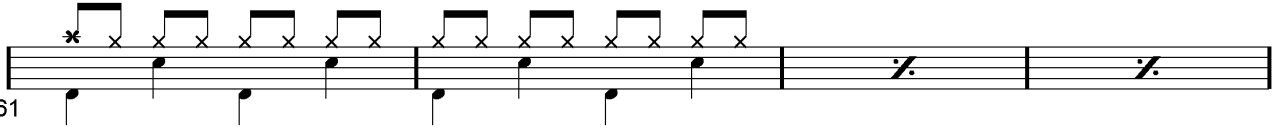
53

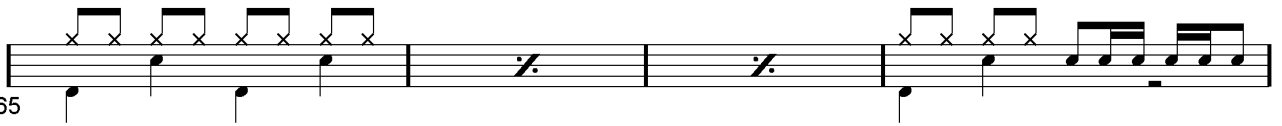


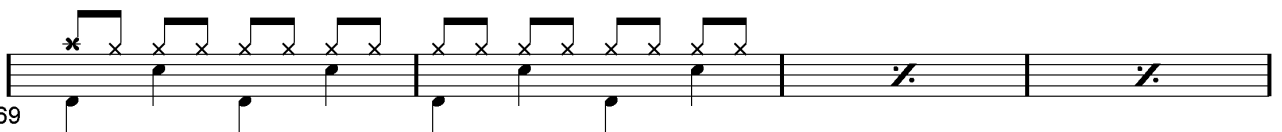
Partition batterie page 2:

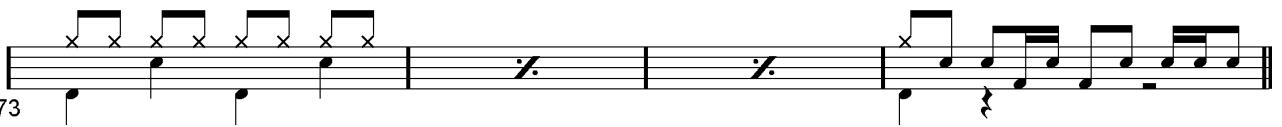
57 

Refrain 2

61 

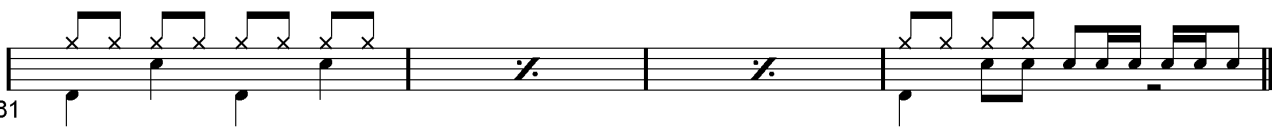
65 

69 

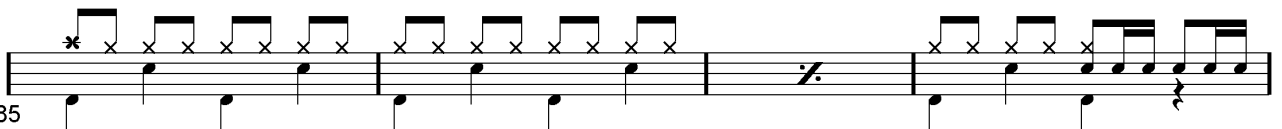
73 

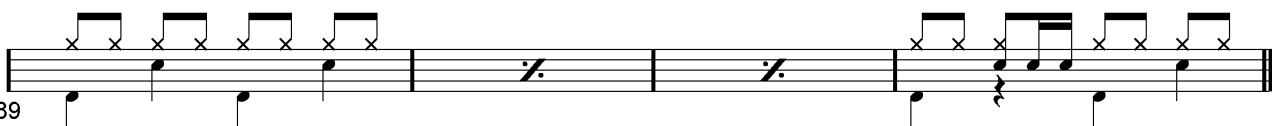
Couplet 5

77 

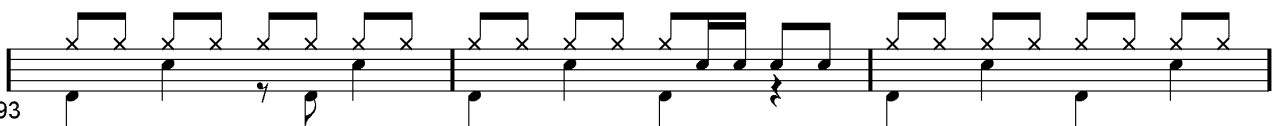
81 

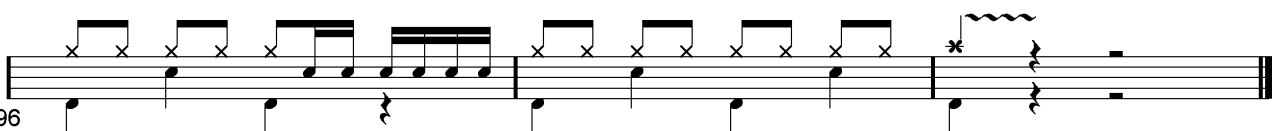
Couplet 6

85 

89 

Final

93 

96 

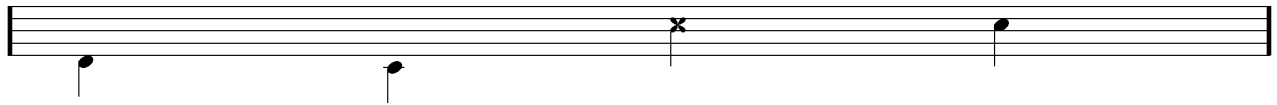
Écriture batterie:

bd 1

bd 2

rim-shot

sd

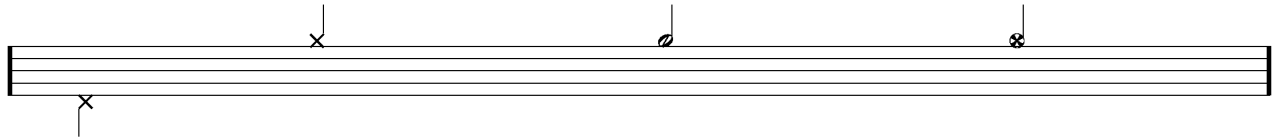


HH Pied

HH fermée

HH entrouverte

HH ouverte

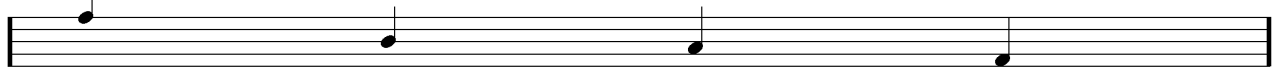


tom 1

tom 2

tom 3

tom 4

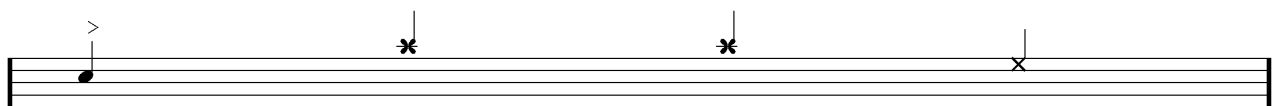


accent

note mutée

crash

cloche

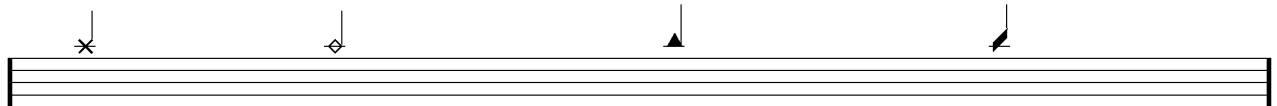


ride

dôme de cymbale

chinoise

splash



flas

note muette

