

The Doors The End:

Table des matières

Introduction:.....	2
Tablature page 1:.....	3
Tablature page 2:.....	4
Tablature page 3:.....	5
Partition page 1:.....	6
Partition page 2:.....	7
Partition page 3:.....	8
Batterie page 1:.....	9
Batterie page 2:.....	10
Batterie page 3:.....	11
Batterie page 4:.....	12
Écriture batterie:.....	13
Titres disponibles:.....	14
Titres en préparation:.....	14
Conclusion:.....	14

Introduction:

Pour les deux instruments: attention aux changements de mesures (4/4 et 2/4).

Une ligne de basse très répétitive (par expérience ce n'est pas toujours facile de rester sur le même riff pendant presque tout un morceau) avec un rythme pratiquement identique du début à la fin du morceau (à l'exception des ponts).

La partie de batterie est plus variée avec beaucoup de parties différentes et des variations de cymbales, il y a également des breaks en doubles-croches ou en sextolets avec des crescendos qui ne sont pas faciles à exécuter.

Voici le lien pour écouter le morceau:

[the doors the end](#)

Bon courage à tous !

Tablature page 1:

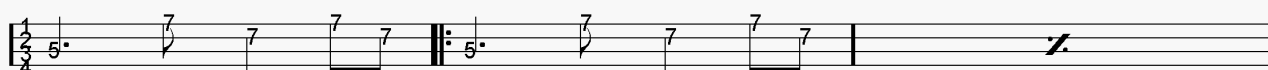
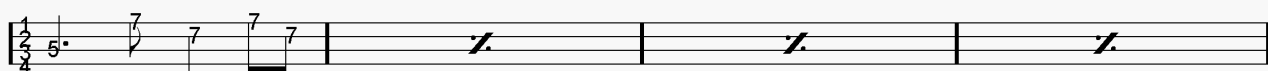
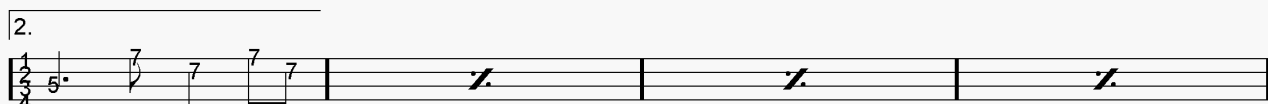
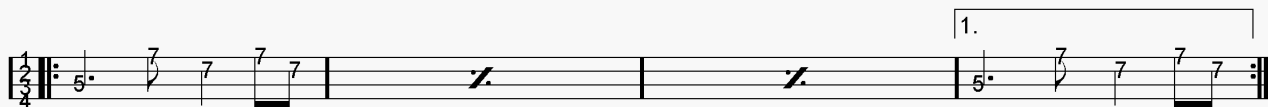
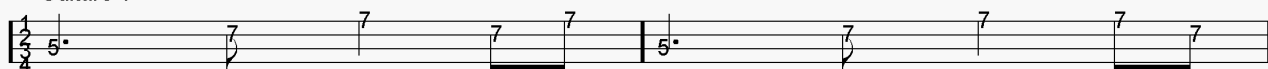
Intro

Couplet 1

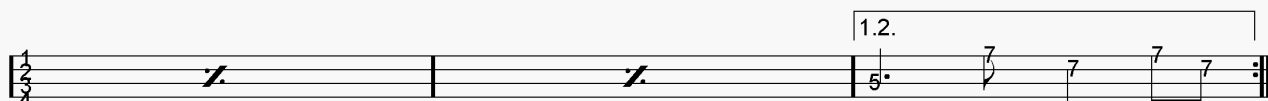
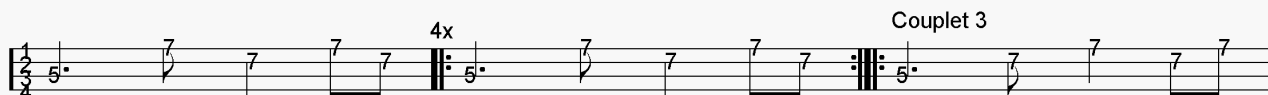
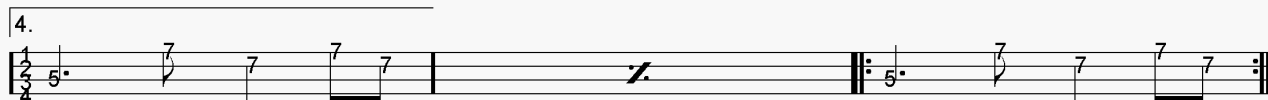
2.

Tablature page 2:

Guitare 1



Couplet 2



Tablature page 3:

1.3.

2. 4. 5.

5x 1.3.4.5.

2.

7x x?

Pont 1 Guitare 2 Pont 2 x?

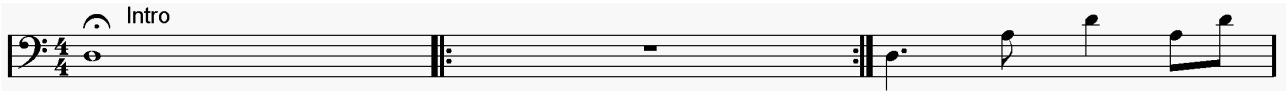
Reprise

Chant

ad lib. Final

Partition page 1:

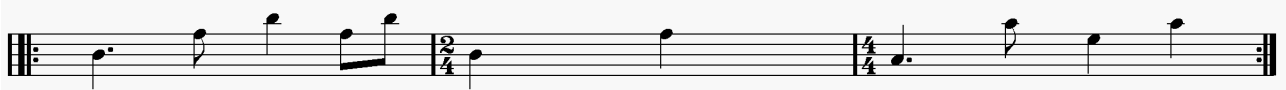
Intro



Couplet 1

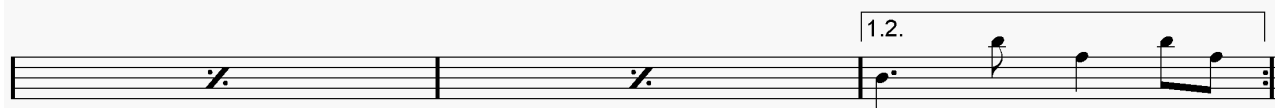
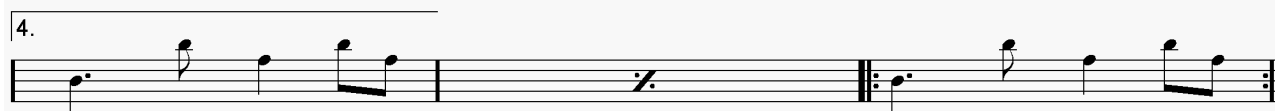
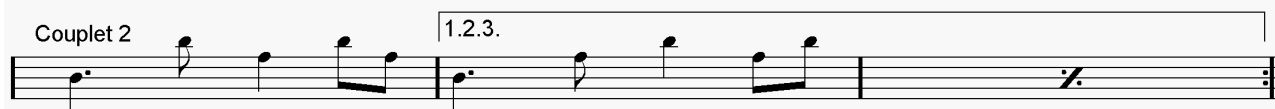


2.



Partition page 2:

Guitare 1



Partition page 3:

1.3.

2. 4. 5.

5x 1.3.4.5.

7x x?

Pont 1 Guitare 2 Pont 2 x?

Reprise

Chant

ad lib. Final

Batterie page 1:

♩ = 100 Intro = fill in

The first staff of music is in 4/4 time. It begins with a series of eighth-note patterns on a single line, followed by a double bar line. The notation then shows a sequence of quarter notes with 'x' marks below them, indicating drum hits, and ends with a quarter note followed by an eighth note.

tambourin

The second staff of music is in 4/4 time. It starts with a quarter note followed by an eighth note. This is followed by a section of eighth-note patterns on a single line, labeled 'tambourin'. After a double bar line, there is a '3x' marking above a series of eighth-note patterns on a single line, followed by a double bar line and a sequence of quarter notes with 'x' marks below them.

Couplet 1

The first staff of the 'Couplet 1' section is in 4/4 time. It begins with eighth-note patterns on a single line, followed by a double bar line. The notation then shows a sequence of quarter notes with 'x' marks below them, indicating drum hits. The section ends with a double bar line and a first ending bracket labeled '1.' leading to a 2/4 time signature.

The second staff of the 'Couplet 1' section is in 2/4 time. It begins with eighth-note patterns on a single line, followed by a double bar line. The notation then shows a sequence of quarter notes with 'x' marks below them, indicating drum hits. The section ends with a double bar line and a second ending bracket labeled '2.' leading to a 4/4 time signature.

The third staff of the 'Couplet 1' section is in 4/4 time. It begins with eighth-note patterns on a single line, followed by a double bar line. The notation then shows a sequence of quarter notes with 'x' marks below them, indicating drum hits. The section ends with a double bar line and a first ending bracket labeled '1.' leading to a 2/4 time signature.

The fourth staff of the 'Couplet 1' section is in 4/4 time. It begins with eighth-note patterns on a single line, followed by a double bar line. The notation then shows a sequence of quarter notes with 'x' marks below them, indicating drum hits. The section ends with a double bar line and a first ending bracket labeled '1.' leading to a 2/4 time signature.

The fifth staff of the 'Couplet 1' section is in 4/4 time. It begins with eighth-note patterns on a single line, followed by a double bar line. The notation then shows a sequence of quarter notes with 'x' marks below them, indicating drum hits. The section ends with a double bar line and a first ending bracket labeled '1.' leading to a 2/4 time signature.

The sixth staff of the 'Couplet 1' section is in 4/4 time. It begins with eighth-note patterns on a single line, followed by a double bar line. The notation then shows a sequence of quarter notes with 'x' marks below them, indicating drum hits. The section ends with a double bar line and a first ending bracket labeled '1.' leading to a 2/4 time signature.

Batterie page 2:

The musical score for Batterie page 2 consists of several systems of staves. The top two systems are for the Batterie (drums), featuring rhythmic notation with diamond-shaped notes and stems. The third system is labeled "Guitare 1" and contains a guitar part with various rhythmic figures and accents. The fourth system includes a first ending (1.) and a second ending (2.) for the Batterie part. The fifth system continues the Batterie part with triplet markings (3) and accents. The sixth system shows a continuation of the Batterie part with a repeat sign and a final bar line. The seventh system is labeled "Couplet 2" and includes a first ending (1.2.3.) for the Batterie part. The eighth system is labeled "4." and shows a continuation of the Batterie part with a repeat sign and a final bar line.

Batterie page 3:

Couplet 3

4x

1.2.

3. 3 3 4.

1.3.

2. 4. 5.

5x 1.3.4.5.

2. 3 3

Batterie page 4:

7x

Musical notation for the first staff, featuring a 7x drum pattern and an x? mark.

Pont 1 Guitare 2 Pont 2

Musical notation for the second staff, featuring Pont 1, Guitare 2, Pont 2, and an x? mark.

Reprise

Musical notation for the third staff, labeled Reprise.

Chant

Musical notation for the fourth staff, labeled Chant.

Final

ad lib.

Musical notation for the fifth staff, labeled Final and ad lib.

Écriture batterie:

bd 1

bd 2

rim-shot

sd

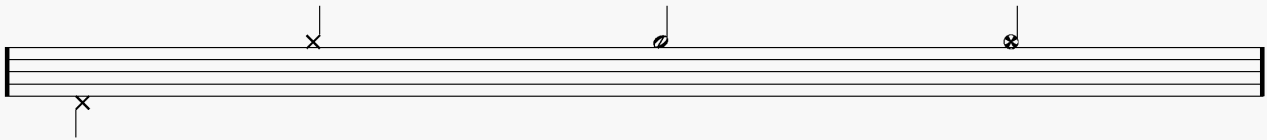


HH Pied

HH fermée

HH entrouverte

HH ouverte

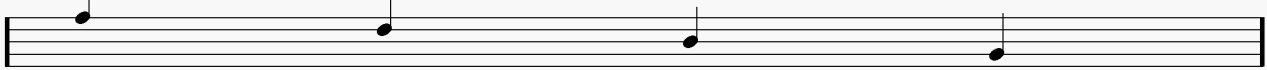


tom 1

tom 2

tom 3

tom 4

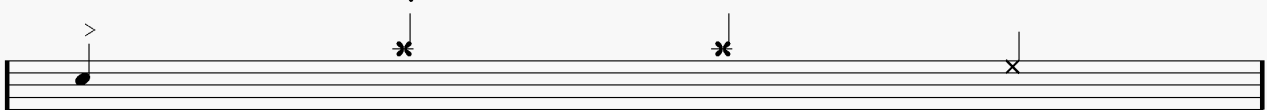


accent

note mutée

crash

cloche



ride

dôme de cymbale

chinoise

splash

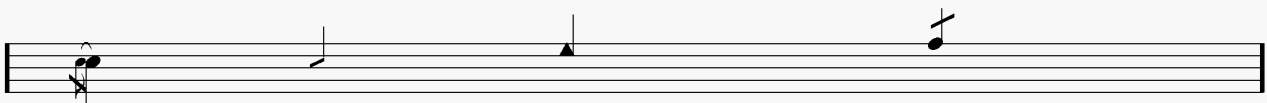


fla

note muette

Claps

Roulé = 2 coups d'1 seule main



Titres disponibles:

Cliquez sur ce lien pour voir la liste des titres disponibles:

[titres disponibles](#)

Titres en préparation:

Cliquez sur ce lien pour voir la liste des titres en préparation:

[titres en préparation](#)

Conclusion:

Si vous souhaitez faire des commentaires sur ce dossier vous pouvez me contacter sur ma messagerie: emmanuel.somenzi@free.fr