

**The Doobie Brothers Long Train Runnin':**

**Table des matières**

Introduction: .....	2
Tablature basse page 1:.....	3
Tablature basse page 2:.....	4
Tablature basse page 3:.....	5
Partition basse page 1:.....	6
Partition basse page 2:.....	7
Partition basse page 3:.....	8
Partition batterie page 1:.....	9
Partition batterie page 2:.....	10
Partition batterie page 3:.....	11
Écriture batterie:.....	12

### **Introduction:**

Pour la partie de basse il y a beaucoup de syncopes et de contretemps en doubles-croches, quelques hammers et il y a pas mal de notes muettes que je trouve intelligemment placées (sur les couplets et les refrains notamment).

Pour la partition il y a 2 bémols à la clef: le Sib et le Mib.

Pour la batterie, la plus grosse difficulté: les contretemps en doubles-croches à la grosse caisse et quelques breaks pas faciles à exécuter.

Voici le lien pour écouter le morceau:

[the doobie brothers long train runnin'](#)

Bon courage à tous !

**Tablature basse page 1:**

The Doobie Brothers Long Train Runnin'

Intro

1

5

Couplet 1

9

Refrain 1

13

17

Couplet 2

21

Refrain 2

25

29

Couplet 3

33

Refrain 3

37

## Tablature basse page 2:

41

### Solo

45

49

53

### Couplet 4

57

### Refrain 4

61

65

### Couplet 5

69

### Refrain 5

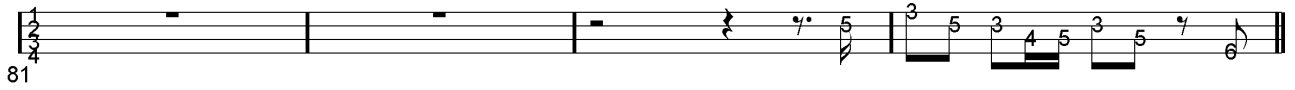
73

77

ralentir.....

### Tablature basse page 3:

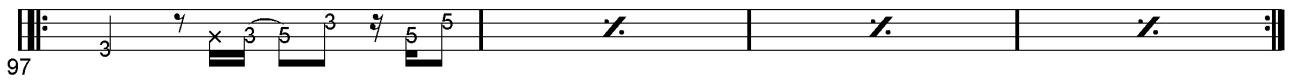
Pont



Final



ad lib



**Partition basse page 1:**

The Doobie Brothers Long Train Runnin'

Intro

1

5

Couplet 1

9

Refrain 1

13

17

Couplet 2

21

Refrain 2

25

29

Couplet 3

33

Refrain 3

37

**Partition basse page 2:**

41 

Solo

45 

49 

53 

Couplet 4


57 

Refrain 4

61 

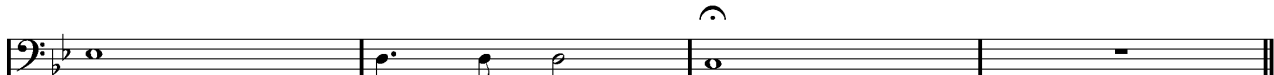
65 

Couplet 5

69 

Refrain 5

73 

77   
ralentir.....

**Partition basse page 3:**

Pont

81



Final

85



89



93



ad lib

97





# Partition batterie page 1:

## The Doobie Brothers Long Train Runnin'

♩ = 120

Intro

1

5

The Intro section consists of two staves. The first staff (measures 1-4) shows a drum set with a 4/4 time signature. Measures 1-3 are empty, and measure 4 contains a snare drum hit followed by a hi-hat pattern. The second staff (measures 5-8) shows a bass drum pattern with a consistent eighth-note rhythm, marked with an asterisk in the first measure. The snare drum has a consistent eighth-note pattern with occasional accents.

Couplet 1

9

Couplet 1 consists of four measures (9-12) on a single staff. It features a consistent eighth-note bass drum pattern and a snare drum pattern with occasional accents.

Refrain 1

13

Refrain 1 consists of four measures (13-16) on a single staff. It features a consistent eighth-note bass drum pattern and a snare drum pattern with occasional accents.

17

This block continues the Refrain 1 pattern for four measures (17-20) on a single staff.

Couplet 2

21

Couplet 2 consists of four measures (21-24) on a single staff. It features a consistent eighth-note bass drum pattern and a snare drum pattern with occasional accents.

Refrain 2

25

Refrain 2 consists of four measures (25-28) on a single staff. It features a consistent eighth-note bass drum pattern and a snare drum pattern with occasional accents.

29

This block continues the Refrain 2 pattern for four measures (29-32) on a single staff.

Couplet 3


33

Couplet 3 consists of four measures (33-36) on a single staff. It features a consistent eighth-note bass drum pattern and a snare drum pattern with occasional accents.

## Partition batterie page 2:

### Refrain 3

37




41




### Solo


45



49




53



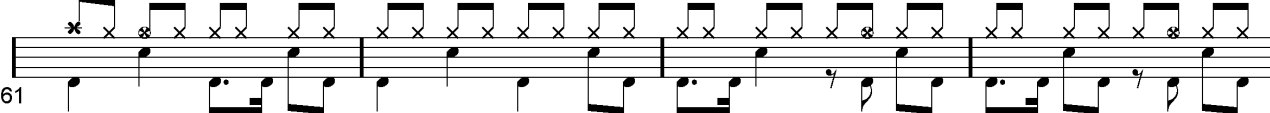
### Couplet 4

57




### Refrain 4

61



65



### Couplet 5

69



### Partition batterie page 3:

#### Refrain 5

73

77

#### Pont

81

#### Final

85

89

93

ad lib  
97

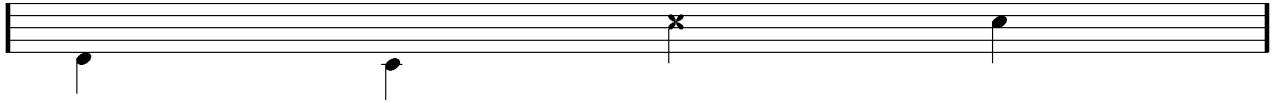
## Écriture batterie:

bd 1

bd 2

rim-shot

sd

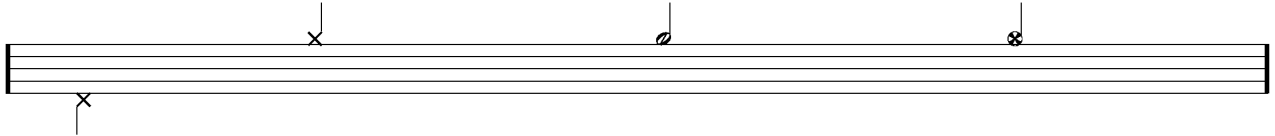


HH Pied

HH fermée

HH entrouverte

HH ouverte

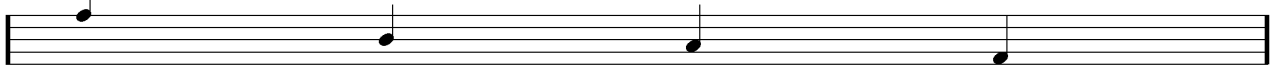


tom 1

tom 2

tom 3

tom 4

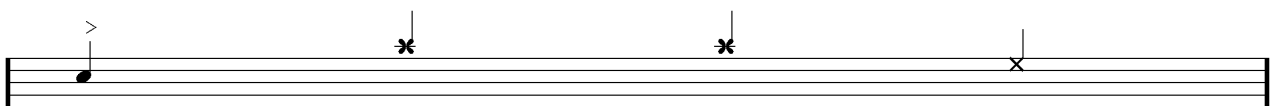


accent

note mutée

crash

cloche

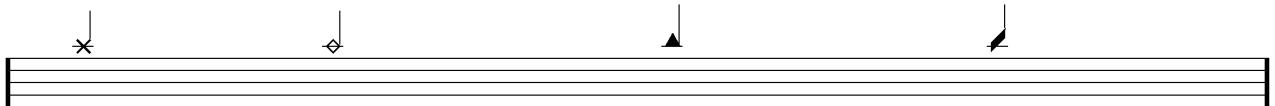


ride

dôme de cymbale

chinoise

splash



flas

note muette

