

The Cure Just Like Heaven:

Table des matières

Introduction:.....	2
Tablature basse:.....	3
Partition basse:.....	4
Partition batterie page 1:.....	5
Partition batterie page 2:.....	6
Écriture batterie:.....	7

Introduction:

Une ligne de basse très répétitive, les seules difficultés ce sont les contretemps, les syncopes et quelques glissés.

Pour la partition il y a 1 dièse à la clef: le Fa#.

La batterie est très répétitive également, les seules difficulté à signaler ce sont les contretemps à la grosse caisse, il n'y a que les breaks en croches où il faut placer les coups de caisse claire et de cymbale crash en même temps qui pourraient poser de problèmes aux plus débutants vu le tempo du morceau.

Voici le lien pour écouter le morceau:

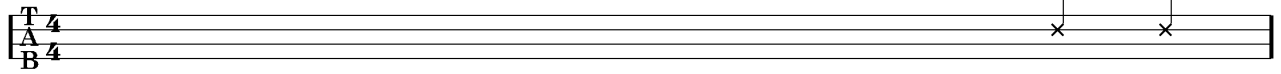
[The Cure Just Like Heaven](#)

Bon courage à tous !

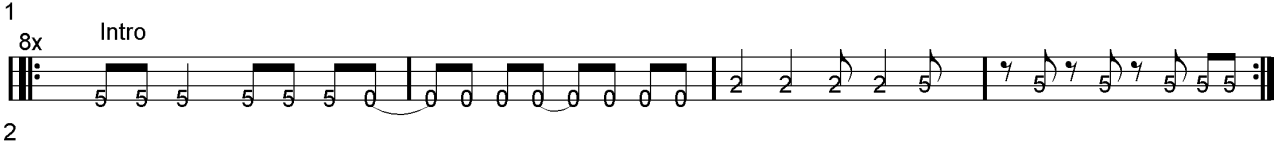
Tablature basse:
The Cure Just Like Heaven

Break batterie

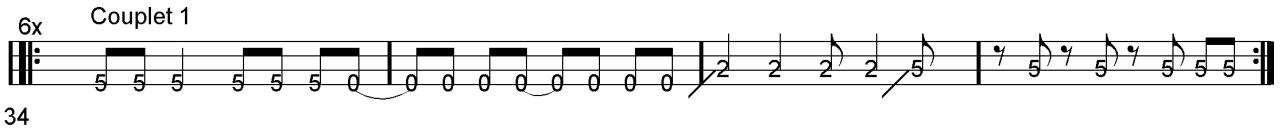
T 4
A 4
B 4



1
8x Intro



2
6x Couplet 1



34
6x Couplet 2



58
Refrain 1



82



86



89

4x Solo Piano



92

4x Couplet 3



108

Refrain 2



124

Fin



128

Partition basse:

The Cure Just Like Heaven

Break batterie

1

8x Intro

2

6x Couplet 1

34

6x Couplet 2

58

Refrain 1

82

86

89

4x Solo Piano

92

4x Couplet 3

108

Refrain 2

124

Fin

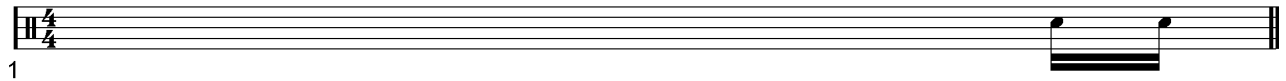
128

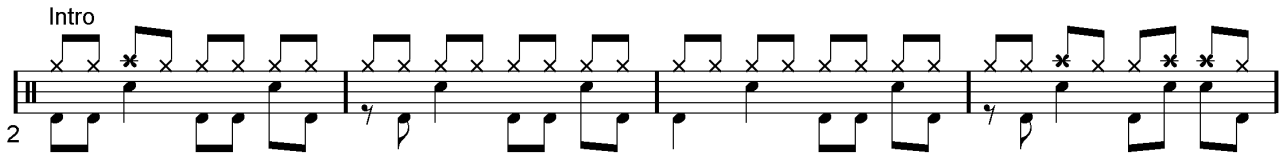
Partition batterie page 1:

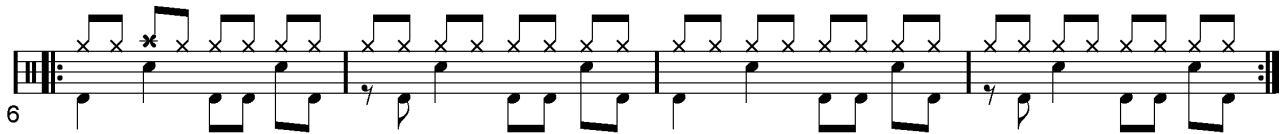
♩ = 147

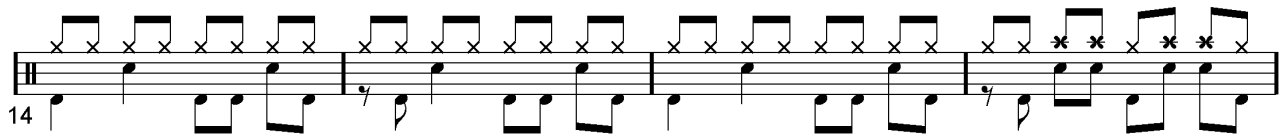
The Cure Just Like Heaven

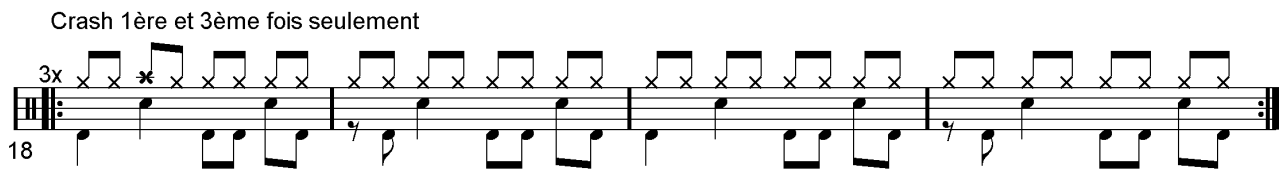
Break

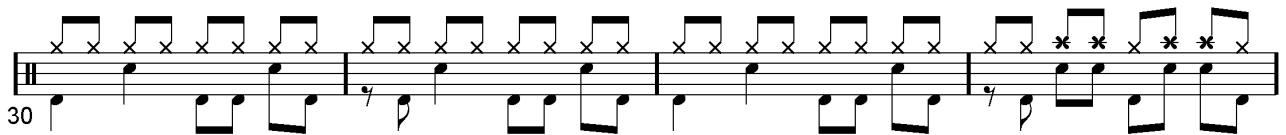
1 

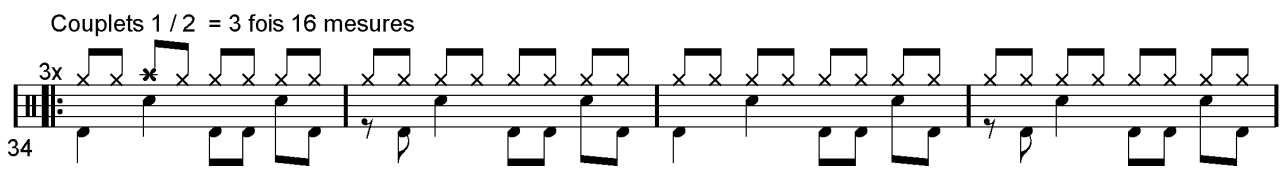
2 **Intro** 

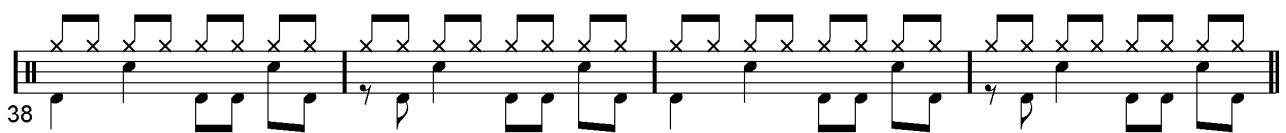
6 

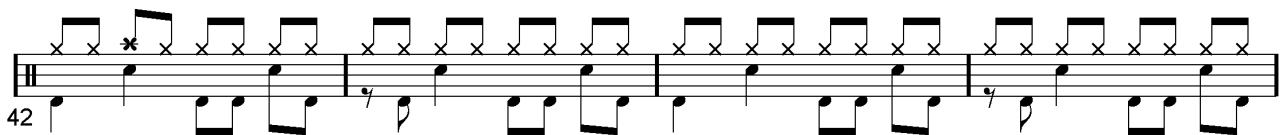
14 

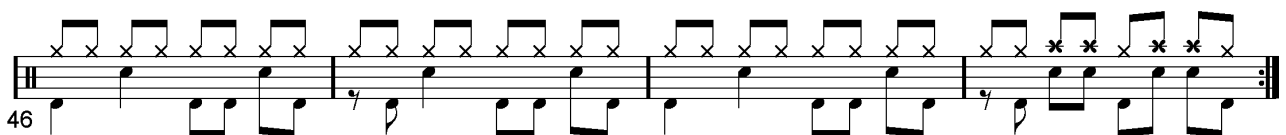
18 **Crash 1ère et 3ème fois seulement** 

30 

34 **Couplets 1 / 2 = 3 fois 16 mesures** 

38 

42 

46 

Partition batterie page 2:

Refrain 1

82

Musical notation for Refrain 1, measures 82-85. It features a drum set with a snare drum and a kick drum. The snare drum part consists of eighth notes with 'x' marks above them, indicating cymbal hits. The kick drum part consists of quarter notes. There are asterisks above the first and third measures of the snare line.

86

Musical notation for Refrain 1, measures 86-88. Similar to measures 82-85, it features a snare drum with eighth notes and a kick drum with quarter notes. An asterisk is above the first measure of the snare line.

89

Musical notation for Refrain 1, measures 89-91. Similar to previous measures, it features a snare drum with eighth notes and a kick drum with quarter notes. Asterisks are above the second, third, and fourth measures of the snare line.

Solo Piano Crash 1ère et 3ème fois seulement

92

3x

Musical notation for Solo Piano Crash, measures 92-95. It features a snare drum with eighth notes and a kick drum with quarter notes. The snare line has asterisks above the first and third measures. A '3x' symbol is above the first measure, and repeat signs are at the beginning and end of the section.

104

Musical notation for Solo Piano Crash, measures 104-107. Similar to measures 92-95, it features a snare drum with eighth notes and a kick drum with quarter notes. Asterisks are above the fourth, fifth, and sixth measures of the snare line.

Couplet 3 Crash 1ère et 3ème fois seulement

108

3x

Musical notation for Couplet 3 Crash, measures 108-111. It features a snare drum with eighth notes and a kick drum with quarter notes. The snare line has asterisks above the first and third measures. A '3x' symbol is above the first measure, and repeat signs are at the beginning and end of the section.

120

Musical notation for Couplet 3 Crash, measures 120-123. Similar to measures 108-111, it features a snare drum with eighth notes and a kick drum with quarter notes. Asterisks are above the fourth, fifth, and sixth measures of the snare line.

Refrain 2

124

Musical notation for Refrain 2, measures 124-127. It features a snare drum with eighth notes and a kick drum with quarter notes. An asterisk is above the first measure of the snare line.

128

Fin

Musical notation for Refrain 2, measures 128-129. It features a snare drum with eighth notes and a kick drum with quarter notes. An asterisk is above the second measure of the snare line. The section ends with a double bar line.

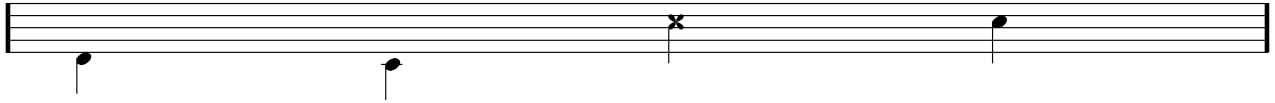
Écriture batterie:

bd 1

bd 2

rim-shot

sd

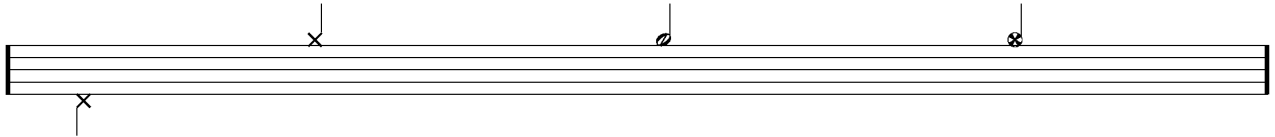


HH Pied

HH fermée

HH entrouverte

HH ouverte

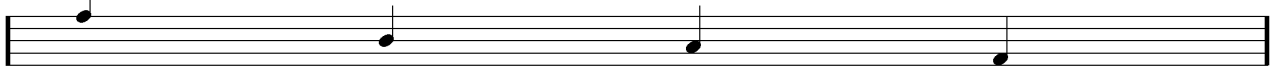


tom 1

tom 2

tom 3

tom 4

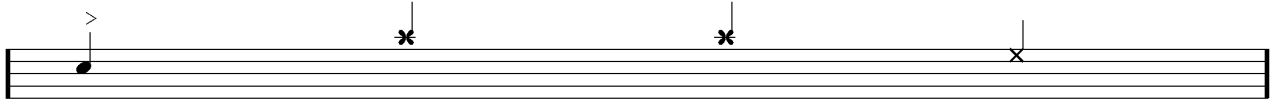


accent

note mutée

crash

cloche

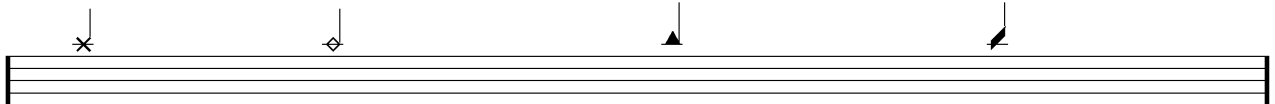


ride

dôme de cymbale

chinoise

splash



flas

note muette

