

## The Cure Boys Don't Cry:

### **Table des matières**

Introduction:.....	2
Tablature basse page 1:.....	3
Tablature basse page 2:.....	4
Partition basse page 1:.....	5
Partition basse page 2:.....	6
Partition batterie page 1:.....	7
Partition batterie page 2:.....	8
Écriture batterie:.....	9

### **Introduction:**

**La grosse difficulté pour les deux instruments c'est le tempo qui est assez haut et les passages en triolets de noires.**

Pour la basse il y a des glissés et des syncopes mais rien d'insurmontable. Il faut effectuer les glissés entre les notes bleues qui sont à la fin des mesures et les notes bleues qui sont au début des mesures suivantes.

Pour la partition il y a 4 dièses à la clef: le Do#, le Ré#, le Fa# et le Sol#.

La partie de batterie est relativement facile, il y a juste quelques breaks en doubles-croches.

Voici le lien pour écouter le morceau:

[the cure boys don't cry](#)

Bon courage à tous !

**Tablature basse page 1:**  
The Cure Boys Don't Cry

Intro

1

Intro guitar tab for bass, 4/4 time. Staff shows strings T, A, B. Fingering: 0, 2, 4, 0, 0, 9, 7. A triplet of 9, 7, 7 is indicated at the end.

Gimmick

5

Gimmick guitar tab for bass, 4/4 time. Staff shows strings T, A, B. Fingering: 7, 7, 7, 9, 7, 9, 9, 9, 9, 9, 11, 9, 11, 11, 11, 11, 11, 9, 11, 12, 12, 12, 12, 11, 9. A triplet of 12, 12, 12 is indicated at the end.

9

Gimmick guitar tab for bass, 4/4 time. Staff shows strings T, A, B. Fingering: 7, 7, 7, 7, 7, 9, 7, 9, 9, 9, 9, 9, 11, 9, 11, 11, 11, 11, 11, 9, 11, 12, 12, 12, 12, 12, 11, 9. A triplet of 12, 12, 12 is indicated at the end.

13

Gimmick guitar tab for bass, 4/4 time. Staff shows strings T, A, B. Fingering: 7, 7, 7, 7, 7, 9, 7, 9, 9, 9, 9, 9, 11, 9, 11, 11, 11, 11, 11, 9, 11, 12, 12, 12, 12, 12, 9, 11. A triplet of 12, 12, 12 is indicated at the end.

♩ Couplets 1 / 2

17

Couplets 1/2 guitar tab for bass, 4/4 time. Staff shows strings T, A, B. Fingering: 7, 0, 0, 2, 2, 2, 2, 0, 2, 4, 4, 4, 4, 2, 4, 5, 5, 5, 5, 4, 2, 5, 5, 5, 5, 2, 4. Includes first and second endings. A triplet of 5, 5, 5 is indicated at the end.

Pont 1

25

Pont 1 guitar tab for bass, 4/4 time. Staff shows strings T, A, B. Fingering: 4, 4, 6, 6, 4, 5, 4, 2, 2, 2, 2, 2, 0, 2, 4, 4, 4, 4, 4, 2, 2, 2, 2, 0, 2. A triplet of 2, 2, 2 is indicated at the end.

29

Pont 1 guitar tab for bass, 4/4 time. Staff shows strings T, A, B. Fingering: 4, 4, 4, 4, 4, 5, 4, 0, 0, 2, 0, 2, 4, 4, 4, 4, 4, 4, 4, 2, 2, 2, 2, 2, 2.

Refrain 1

33

Refrain 1 guitar tab for bass, 4/4 time. Staff shows strings T, A, B. Fingering: 7, 7, 7, 9, 7, 9, 9, 9, 9, 9, 11, 9, 11, 11, 11, 11, 11, 9, 11, 12, 12, 12, 12, 12, 11, 9. A triplet of 12, 12, 12 is indicated at the end.

37

Refrain 1 guitar tab for bass, 4/4 time. Staff shows strings T, A, B. Fingering: 7, 7, 7, 9, 7, 9, 9, 9, 9, 9, 11, 9, 11, 11, 11, 11, 11, 9, 11, 12, 12, 12, 12, 12, 11, 9. A triplet of 12, 12, 12 is indicated at the end.

♩ Pont 2

49

Pont 2 guitar tab for bass, 4/4 time. Staff shows strings T, A, B. Fingering: 4, 4, 4, 4, 5, 4, 2, 2, 2, 2, 0, 2, 4, 4, 4, 4, 4, 4, 4, 2, 2, 2, 2, 0, 2. A triplet of 2, 2, 2 is indicated at the end.

## Tablature basse page 2:

53

53

Refrain 2

1. 3. 2. 3.

57

Couplet 3

1. 2.

65

Pont 3

73

77

Couplet 4

1. 2.

81

Refrain 3

3.

89

93

97

Final

3.

101

ralentir.....

**Partition basse page 1:**  
**The Cure Boys Don't Cry**

Intro

1

Musical notation for the Intro section, measures 1-4. The key signature is three sharps (F#, C#, G#) and the time signature is 4/4. The notation includes a whole note, a half note, and a quarter note triplet.

Gimmick

5

Musical notation for the Gimmick section, measures 5-8. The notation features eighth notes and quarter notes, with a triplet of eighth notes at the end of the section.

9

Musical notation for the Gimmick section, measures 9-12. The notation continues with eighth notes and quarter notes, ending with a triplet of eighth notes.

13

Musical notation for the Gimmick section, measures 13-16. The notation continues with eighth notes and quarter notes, ending with a triplet of eighth notes.

♩ Couplets 1 / 2

17

Musical notation for the Couplets section, measures 17-18. The notation includes a first ending (1.) and a second ending (2. la 4ème fois = ⊕).

Pont 1

25

Musical notation for Pont 1, measures 25-28. The notation includes eighth notes and quarter notes, with a triplet of eighth notes at the end of the section.

29

Musical notation for Pont 1, measures 29-32. The notation continues with eighth notes and quarter notes.

Refrain 1

33

Musical notation for Refrain 1, measures 33-36. The notation features eighth notes and quarter notes, with a triplet of eighth notes at the end of the section.

37

Musical notation for Refrain 1, measures 37-40. The notation continues with eighth notes and quarter notes, ending with a triplet of eighth notes and a repeat sign (♩).

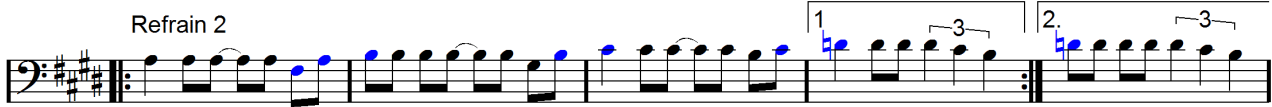
⊕ Pont 2

49

Musical notation for Pont 2, measures 49-52. The notation includes eighth notes and quarter notes.

**Partition basse page 2:**

53 

57 **Refrain 2** 

65 **Couplet 3** 

73 **Pont 3** 

77 

81 **Couplet 4** 

89 **Refrain 3** 

93 

97 

101 **Final**   
ralentir.....

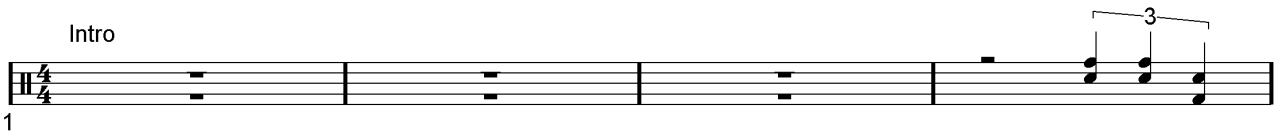
# Partition batterie page 1:

## The Cure Boys Don't Cry

♩ = 168

Intro

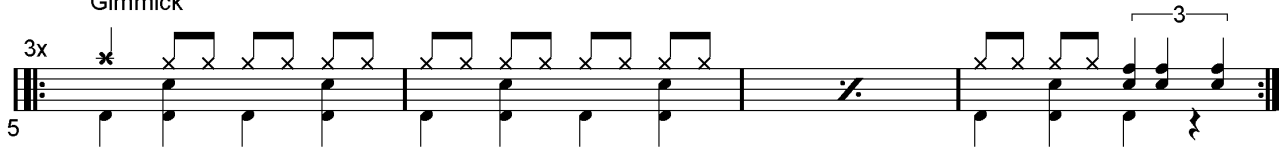
1



Gimmick

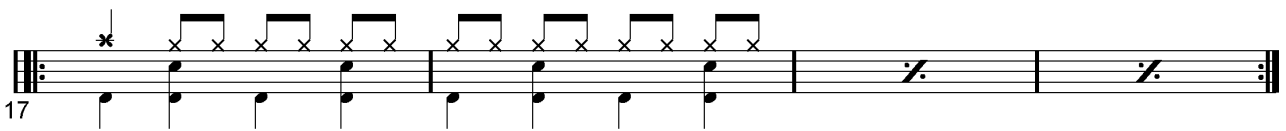
5

3x



Couplet 1

17

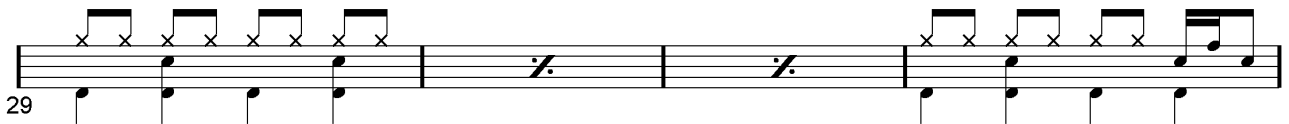


Pont 1

25

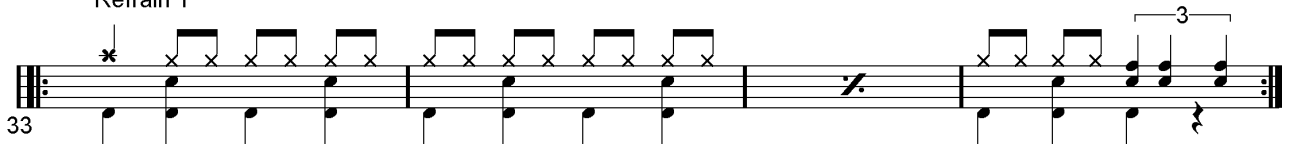


29



Refrain 1

33

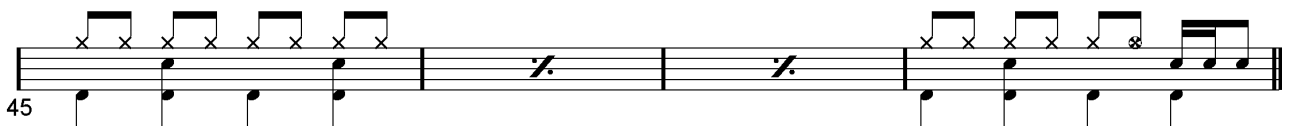


Couplet 2

41



45



## Partition batterie page 2:

### Pont 2

49

53

### Refrain 2

57

### Couplet 3

65

### Pont 3

73

77

### Couplet 4

81

### Refrain 3

89

### Final

101



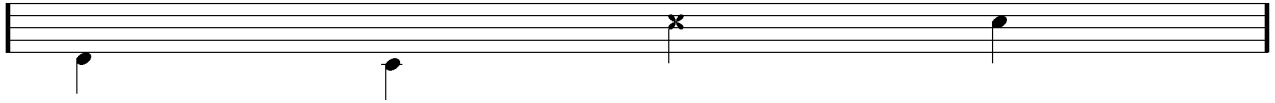
## Écriture batterie:

bd 1

bd 2

rim-shot

sd

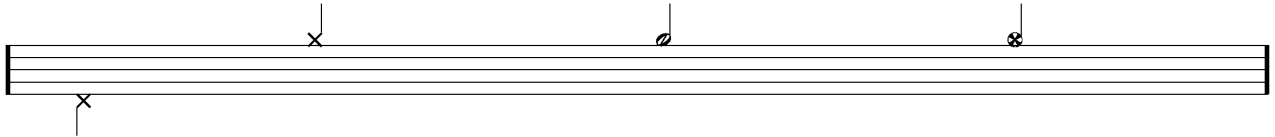


HH Pied

HH fermée

HH entrouverte

HH ouverte

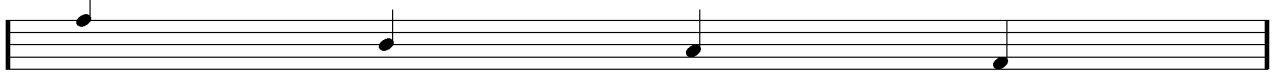


tom 1

tom 2

tom 3

tom 4

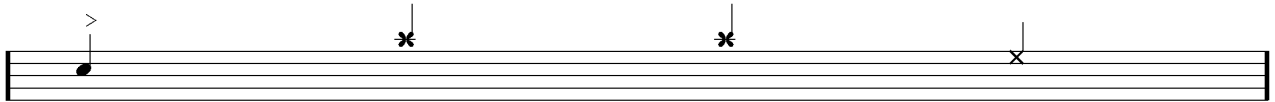


accent

note mutée

crash

cloche

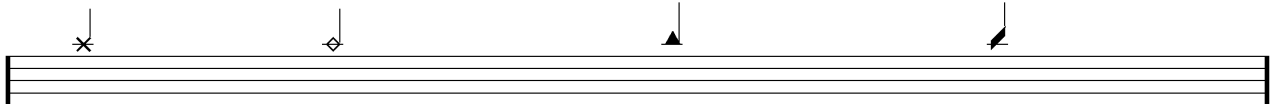


ride

dôme de cymbale

chinoise

splash



flas

note muette

