

The Blues Brothers Soul Man:

Table des matières

Introduction:.....	2
Tablature basse:.....	3
Partition basse:.....	4
Partition batterie page 1:.....	5
Partition batterie page 2:.....	6
Écriture batterie:.....	7

Introduction:

Une ligne de basse très répétitive mais pas facile à tenir car le tempo est relativement rapide, il y a des accents et des contretemps.

Pour la partition il y a deux dièses à la clef: le Fa# et le Do# puis après le pont 1 il y a un changement de tonalité avec un seul bémol à la clef: le Sib

Pour la partie de batterie, les seules difficultés sont les contretemps en doubles-croches à la grosse caisse et les breaks en doubles-croches également.

Voici le lien pour écouter le morceau:

[The Blues Brothers Soul Man](#)

Bon courage à tous !

Tablature basse:

The Blues Brothers Soul Man

Intro

1

5

Couplets 1 / 2 / 3

9

13

Refrains 1 / 2 / 3

17

21

Pont 1

57

60

Pont 2

62

Solo

66

Refrain 4

70

Final

82

86

Partition basse:

The Blues Brothers Soul Man

Intro

1

Detailed description: This block contains the first four measures of the bass line. It starts with a treble clef, a key signature of two sharps (F# and C#), and a 4/4 time signature. The notes are: measure 1: quarter rest, quarter note G2, quarter note A2, quarter note B2; measure 2: quarter note C3, quarter note D3, quarter note E3, quarter note F3; measure 3: quarter note G3, quarter note A3, quarter note B3, quarter note C4; measure 4: quarter note D4, quarter note E4, quarter note F4, quarter note G4. There is an accent (>) over the G4 note in the fourth measure.

5

Detailed description: This block contains measures 5 through 8. Measure 5 has a treble clef, key signature of two sharps, and 4/4 time. The notes are: quarter note G3, quarter note A3, quarter note B3, quarter note C4. Measures 6, 7, and 8 each contain a slash (/) indicating a repeat of the previous measure.

Couplets 1 / 2 / 3

3x

9

Detailed description: This block contains the first triplet of couplets, measures 9 through 12. Measure 9 has a treble clef, key signature of two sharps, and 4/4 time. The notes are: quarter note G3, quarter note A3, quarter note B3, quarter note C4. Measures 10, 11, and 12 each contain a slash (/) indicating a repeat of the previous measure.

13

Detailed description: This block contains the second triplet of couplets, measures 13 through 16. Measure 13 has a treble clef, key signature of two sharps, and 4/4 time. The notes are: quarter note G3, quarter note A3, quarter note B3, quarter note C4. Measures 14, 15, and 16 each contain a slash (/) indicating a repeat of the previous measure.

Refrains 1 / 2 / 3

17

Detailed description: This block contains the first triplet of refrains, measures 17 through 19. Measure 17 has a treble clef, key signature of two sharps, and 4/4 time. The notes are: quarter note G3, quarter note A3, quarter note B3, quarter note C4. Measures 18 and 19 each contain a slash (/) indicating a repeat of the previous measure.

21

Detailed description: This block contains the second triplet of refrains, measures 20 through 22. Measure 20 has a treble clef, key signature of two sharps, and 4/4 time. The notes are: quarter note G3, quarter note A3, quarter note B3, quarter note C4. Measure 21 has the notes: quarter note D4, quarter note E4, quarter note F4, quarter note G4. Measure 22 has the notes: quarter note A4, quarter note B4, quarter note C5, quarter note D5. There are accents (>) over the G4, A4, and B4 notes in measure 22.

Pont 1

27

Detailed description: This block contains the first bridge, measures 23 through 26. Measure 23 has a treble clef, key signature of two sharps, and 4/4 time. The notes are: quarter note G3, quarter note A3, quarter note B3, quarter note C4. Measure 24 has the notes: quarter note D4, quarter note E4, quarter note F4, quarter note G4. Measure 25 has the notes: quarter note A4, quarter note B4, quarter note C5, quarter note D5. Measure 26 has the notes: quarter note E5, quarter note D5, quarter note C5, quarter note B4. There is a sharp sign (#) under the C5 note in measure 24.

30

Detailed description: This block contains the second bridge, measures 27 through 30. Measure 27 has a treble clef, key signature of two sharps, and 4/4 time. The notes are: quarter note G3, quarter note A3, quarter note B3, quarter note C4. Measure 28 has the notes: quarter note D4, quarter note E4, quarter note F4, quarter note G4. Measure 29 has the notes: quarter note A4, quarter note B4, quarter note C5, quarter note D5. Measure 30 has the notes: quarter note E5, quarter note D5, quarter note C5, quarter note B4. The key signature changes to one sharp (F#) at the end of measure 30.

Pont 2

32

Detailed description: This block contains the second bridge, measures 31 through 34. Measure 31 has a treble clef, key signature of one sharp, and 4/4 time. The notes are: quarter note G2, quarter note A2, quarter note B2, quarter note C3. Measure 32 has the notes: quarter note D3, quarter note E3, quarter note F3, quarter note G3. Measure 33 has the notes: quarter note A3, quarter note B3, quarter note C4, quarter note D4. Measure 34 has the notes: quarter note E4, quarter note F4, quarter note G4, quarter note A4.

Solo

36

Detailed description: This block contains the solo section, measures 35 through 38. Measure 35 has a treble clef, key signature of one sharp, and 4/4 time. The notes are: quarter note G3, quarter note A3, quarter note B3, quarter note C4. Measure 36 has the notes: quarter note D4, quarter note E4, quarter note F4, quarter note G4. Measure 37 has the notes: quarter note A4, quarter note B4, quarter note C5, quarter note D5. Measure 38 has the notes: quarter note E5, quarter note D5, quarter note C5, quarter note B4. There are accents (>) over the G4, A4, and B4 notes in measure 38.

3x Refrain 4

40

Detailed description: This block contains the fourth triplet of refrains, measures 39 through 42. Measure 39 has a treble clef, key signature of one sharp, and 4/4 time. The notes are: quarter note G3, quarter note A3, quarter note B3, quarter note C4. Measures 40, 41, and 42 each contain a slash (/) indicating a repeat of the previous measure.

Final

43

Detailed description: This block contains the first part of the final section, measures 43 through 45. Measure 43 has a treble clef, key signature of one sharp, and 4/4 time. The notes are: quarter note G3, quarter note A3, quarter note B3, quarter note C4. Measure 44 has the notes: quarter note D4, quarter note E4, quarter note F4, quarter note G4. Measure 45 has the notes: quarter note A4, quarter note B4, quarter note C5, quarter note D5. There are accents (>) over the G4, A4, and B4 notes in measure 45.

46

Detailed description: This block contains the second part of the final section, measures 46 through 48. Measure 46 has a treble clef, key signature of one sharp, and 4/4 time. The notes are: quarter note G3, quarter note A3, quarter note B3, quarter note C4. Measure 47 has the notes: quarter note D4, quarter note E4, quarter note F4, quarter note G4. Measure 48 has the notes: quarter note A4, quarter note B4, quarter note C5, quarter note D5. There are accents (>) over the G4, A4, and B4 notes in measure 48.

Partition batterie page 1:

The Blues Brothers Soul Man

♩ = 120
Intro

1

5

Couplets 1 / 2

9

13

Refrains 1 / 2

17

21

Couplet 3

41

45

Refrain 3

49

Partition batterie page 2:

53

Measure 53: A drum staff with a treble clef and a key signature of one flat. The notation shows a sequence of eighth notes with 'x' marks above them, followed by a double bar line with a slash, and then a sequence of eighth notes with 'x' marks above them, ending with a double bar line.

Pont 1

57

Measure 57: A drum staff with a treble clef and a key signature of one flat. The notation shows a sequence of eighth notes with 'x' marks above them, followed by a double bar line with a slash, and then a sequence of eighth notes with 'x' marks above them, ending with a double bar line.

Pont 2

62

Measure 62: A drum staff with a treble clef and a key signature of one flat. The notation shows a sequence of eighth notes with 'x' marks above them, followed by a double bar line with a slash, and then a sequence of eighth notes with 'x' marks above them, ending with a double bar line.

Solo

66

Measure 66: A drum staff with a treble clef and a key signature of one flat. The notation shows a sequence of eighth notes with 'x' marks above them, followed by a double bar line with a slash, and then a sequence of eighth notes with 'x' marks above them, ending with a double bar line.

Refrain 4

70

Measure 70: A drum staff with a treble clef and a key signature of one flat. The notation shows a sequence of eighth notes with 'x' marks above them, followed by a double bar line with a slash, and then a sequence of eighth notes with 'x' marks above them, ending with a double bar line.

74

Measure 74: A drum staff with a treble clef and a key signature of one flat. The notation shows a sequence of eighth notes with 'x' marks above them, followed by a double bar line with a slash, and then a sequence of eighth notes with 'x' marks above them, ending with a double bar line.

78

Measure 78: A drum staff with a treble clef and a key signature of one flat. The notation shows a sequence of eighth notes with 'x' marks above them, followed by a double bar line with a slash, and then a sequence of eighth notes with 'x' marks above them, ending with a double bar line.

Final

82

Measure 82: A drum staff with a treble clef and a key signature of one flat. The notation shows a sequence of eighth notes with 'x' marks above them, followed by a double bar line with a slash, and then a sequence of eighth notes with 'x' marks above them, ending with a double bar line.

85

Measure 85: A drum staff with a treble clef and a key signature of one flat. The notation shows a sequence of eighth notes with 'x' marks above them, followed by a double bar line with a slash, and then a sequence of eighth notes with 'x' marks above them, ending with a double bar line.

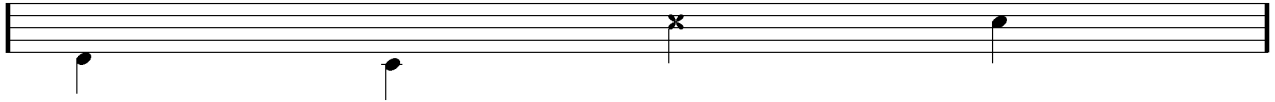
Écriture batterie:

bd 1

bd 2

rim-shot

sd

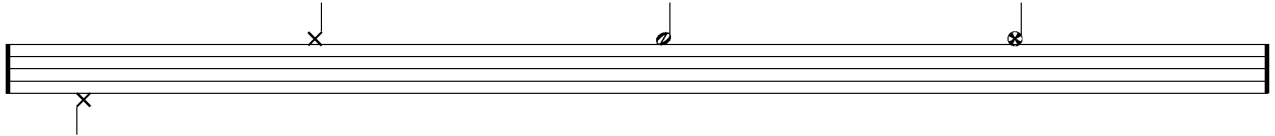


HH Pied

HH fermée

HH entrouverte

HH ouverte

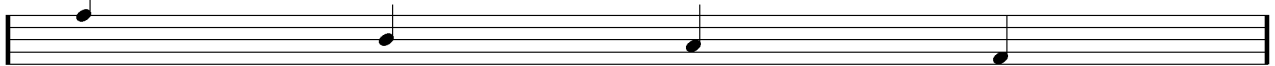


tom 1

tom 2

tom 3

tom 4

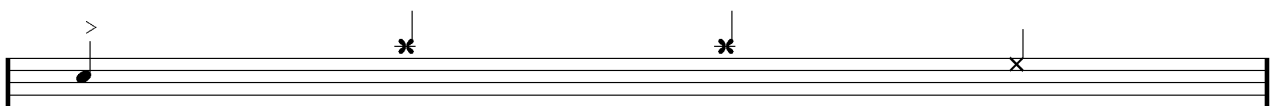


accent

note mutée

crash

cloche

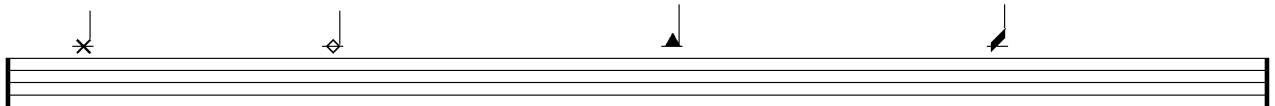


ride

dôme de cymbale

chinoise

splash



flas

note muette

