

**The Beatles The Ballad Of John And Yoko:**

**Table des matières**

Introduction:.....	2
Tablature basse:.....	3
Partition basse:.....	4
Partition batterie page 1:.....	5
Partition batterie page 2:.....	6
Écriture batterie:.....	7

### **Introduction:**

La ligne de basse est assez répétitive et très facile, les principales difficultés sont les contretemps, les syncopes et un glissé sur l'avant-dernière mesure du morceau.

Pour la partition il y a 4 dièses à la clef: le Fa#, le Do#, le Sol# et le Ré#.

La partie de batterie est également très répétitive. Les seules difficultés sont les contretemps à la grosse caisse, les flas sur la caisse claire, plusieurs breaks en croches et un en doubles-croches.

Voici le lien pour écouter le morceau:

[The Beatles The Ballad Of John And Yoko](#)

Bon courage à tous !

# Tablature basse:

## The Beatles The Ballad Of John And Yoko

Intro

Intro guitar tablature for bass, measures 1-2. Measure 1: 0, 4, 4, 2. Measure 2: 4, 2, 4, 2. Measure 3: slash. Measure 4: slash.

1

3x Couplets 1 / 2 / 3

Couplets 1/2/3 guitar tablature for bass, measures 3-6. Measure 3: 0, 4, 4, 2. Measure 4: 4, 2, 4, 2. Measure 5: slash. Measure 6: slash.

3

Couplets 1/2/3 guitar tablature for bass, measures 7-10. Measure 7: 0, 4, 4, 2. Measure 8: 4, 2, 4, 2. Measure 9: slash. Measure 10: slash.

7

Refrains 1 / 2 / 3

Refrains 1/2/3 guitar tablature for bass, measures 11-14. Measure 11: 0, 4, 4, 2. Measure 12: 4, 2, 4, 2. Measure 13: slash. Measure 14: slash.

11

Refrains 1/2/3 guitar tablature for bass, measures 15-18. Measure 15: 2, 4, 4, 1. Measure 16: 4, 1, 4, 1. Measure 17: slash. Measure 18: slash.

15

Pont

Pont guitar tablature for bass, measures 19-22. Measure 19: 0, 4, 4, 2. Measure 20: 4, 2, 4, 2. Measure 21: slash. Measure 22: slash.

51

Pont guitar tablature for bass, measures 23-26. Measure 23: 0, 4, 4, 2. Measure 24: 4, 2, 4, 2. Measure 25: 2, 4, 4, 1. Measure 26: 4, 1, 4, 1. Measure 27: slash. Measure 28: slash.

55

Couplets 4 / 5

Couplets 4/5 guitar tablature for bass, measures 29-32. Measure 29: 0, 4, 4, 2. Measure 30: 4, 2, 4, 2. Measure 31: slash. Measure 32: slash.

60

Couplets 4/5 guitar tablature for bass, measures 33-36. Measure 33: 0, 4, 4, 2. Measure 34: 4, 2, 4, 2. Measure 35: slash. Measure 36: slash.

64

Refrains 4 / 5

Refrains 4/5 guitar tablature for bass, measures 37-40. Measure 37: 0, 4, 4, 2. Measure 38: 4, 2, 4, 2. Measure 39: 0, 4, 4, 2. Measure 40: 4, 2, 4, 2. Measure 41: slash. Measure 42: slash.

68

1ère fois

2ème fois

Refrains 4/5 guitar tablature for bass, measures 41-44. Measure 41: 2, 4, 4, 1. Measure 42: 4, 1, 4, 1. Measure 43: slash. Measure 44: slash.

72

Refrains 4/5 guitar tablature for bass, measures 45-48. Measure 45: 0, 4, 4, 2. Measure 46: 4, 2, 4, 2. Measure 47: slash. Measure 48: slash.

90

Final

Final guitar tablature for bass, measures 49-52. Measure 49: 0, 4, 4, 2. Measure 50: 4, 2, 4, 2. Measure 51: 2, 4, 4, 1. Measure 52: 4, 1, 4, 1. Measure 53: slash. Measure 54: slash.

92

Final guitar tablature for bass, measures 55-58. Measure 55: 0, 4, 4, 0. Measure 56: 2, 4, 4, 2. Measure 57: slash. Measure 58: slash.

95

Fin

glissé

**Partition basse:**

The Beatles The Ballad Of John And Yoko

Intro

1

3x Couplets 1 / 2 / 3

3

7

Refrains 1 / 2 / 3

11

15

Pont

51

55

Couplets 4 / 5

60

64

Refrains 4 / 5

68

1ère fois

2ème fois

72

1.

90

2.

Final

92

95

Fin

glissé

# Partition batterie page 1:

♩ = 136

## The Beatles The Ballad Of John And Yoko

Intro

Musical notation for the Intro section, measures 1-6. The notation is on a single staff with a treble clef and a 4/4 time signature. It features a series of eighth notes with 'x' marks above them, indicating a specific drum pattern. The notes are: G4, A4, B4, C5, B4, A4, G4, F4, E4, D4, C4.

Couplets 1 / 2 / 3

Musical notation for the first triplet of couplets, measures 7-9. The notation is on a single staff with a treble clef and a 4/4 time signature. It features a series of eighth notes with 'x' marks above them, indicating a specific drum pattern. The notes are: G4, A4, B4, C5, B4, A4, G4, F4, E4, D4, C4. The first measure is marked with a '3x' and a repeat sign. The following two measures are marked with a repeat sign and a double bar line.

Musical notation for the second triplet of couplets, measures 10-12. The notation is on a single staff with a treble clef and a 4/4 time signature. It features a series of eighth notes with 'x' marks above them, indicating a specific drum pattern. The notes are: G4, A4, B4, C5, B4, A4, G4, F4, E4, D4, C4. The first measure is marked with a '3x' and a repeat sign. The following two measures are marked with a repeat sign and a double bar line.

Refrains 1 / 2 / 3

Musical notation for the first triplet of refrains, measures 13-15. The notation is on a single staff with a treble clef and a 4/4 time signature. It features a series of eighth notes with 'x' marks above them, indicating a specific drum pattern. The notes are: G4, A4, B4, C5, B4, A4, G4, F4, E4, D4, C4. The first measure is marked with a '3x' and a repeat sign. The following two measures are marked with a repeat sign and a double bar line.

Musical notation for the second triplet of refrains, measures 16-18. The notation is on a single staff with a treble clef and a 4/4 time signature. It features a series of eighth notes with 'x' marks above them, indicating a specific drum pattern. The notes are: G4, A4, B4, C5, B4, A4, G4, F4, E4, D4, C4. The first measure is marked with a '3x' and a repeat sign. The following two measures are marked with a repeat sign and a double bar line. The third measure is marked with a '1..2' and a repeat sign.

Musical notation for the third triplet of refrains, measures 19-21. The notation is on a single staff with a treble clef and a 4/4 time signature. It features a series of eighth notes with 'x' marks above them, indicating a specific drum pattern. The notes are: G4, A4, B4, C5, B4, A4, G4, F4, E4, D4, C4. The first measure is marked with a '3x' and a repeat sign. The following two measures are marked with a repeat sign and a double bar line.

Pont

Musical notation for the Pont section, measures 22-24. The notation is on a single staff with a treble clef and a 4/4 time signature. It features a series of eighth notes with 'x' marks above them, indicating a specific drum pattern. The notes are: G4, A4, B4, C5, B4, A4, G4, F4, E4, D4, C4. The first measure is marked with a '3x' and a repeat sign. The following two measures are marked with a repeat sign and a double bar line.

Musical notation for the end of the Pont section, measures 25-27. The notation is on a single staff with a treble clef and a 4/4 time signature. It features a series of eighth notes with 'x' marks above them, indicating a specific drum pattern. The notes are: G4, A4, B4, C5, B4, A4, G4, F4, E4, D4, C4. The first measure is marked with a '3x' and a repeat sign. The following two measures are marked with a repeat sign and a double bar line. The third measure is marked with a '2/4' and a repeat sign.

Couplet 4

Musical notation for the first triplet of the fourth couplet, measures 28-30. The notation is on a single staff with a treble clef and a 4/4 time signature. It features a series of eighth notes with 'x' marks above them, indicating a specific drum pattern. The notes are: G4, A4, B4, C5, B4, A4, G4, F4, E4, D4, C4. The first measure is marked with a '3x' and a repeat sign. The following two measures are marked with a repeat sign and a double bar line.

Musical notation for the second triplet of the fourth couplet, measures 31-33. The notation is on a single staff with a treble clef and a 4/4 time signature. It features a series of eighth notes with 'x' marks above them, indicating a specific drum pattern. The notes are: G4, A4, B4, C5, B4, A4, G4, F4, E4, D4, C4. The first measure is marked with a '3x' and a repeat sign. The following two measures are marked with a repeat sign and a double bar line.

## Partition batterie page 2:

### Refrain 4

68

72

### Couplet 5

76

80

### Refrain 5

84

88

### Final

92

96

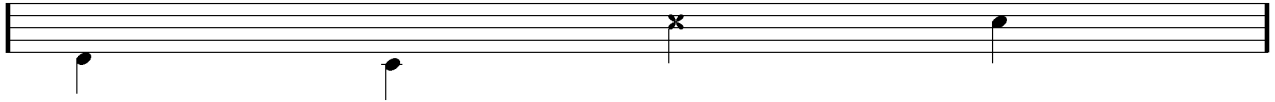
## Écriture batterie:

bd 1

bd 2

rim-shot

sd

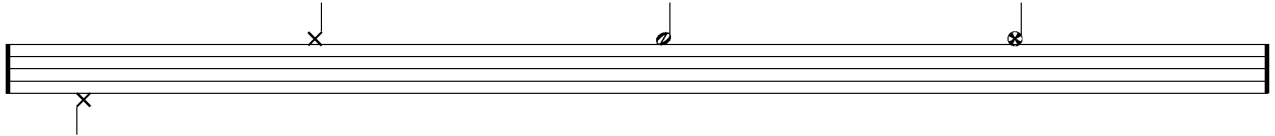


HH Pied

HH fermée

HH entrouverte

HH ouverte

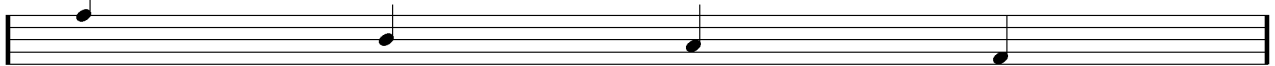


tom 1

tom 2

tom 3

tom 4

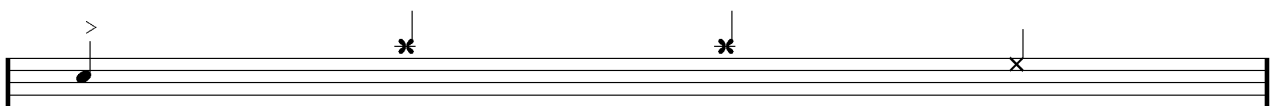


accent

note mutée

crash

cloche

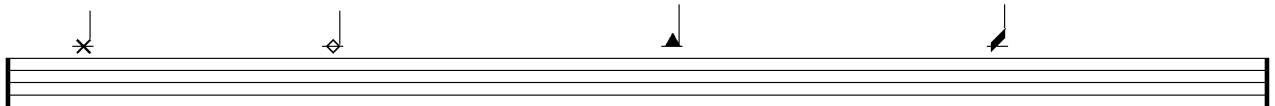


ride

dôme de cymbale

chinoise

splash



flas

note muette

