

The Beatles Taxman:

Table des matières

Introduction:.....	2
Tablature basse page 1:.....	3
Tablature basse page 2:.....	4
Partition basse page 1:.....	5
Partition basse page 2:.....	6
Partition batterie page 1:.....	7
Partition batterie page 2:.....	8
Écriture batterie:.....	9

Introduction:

Pour la ligne de basse les difficultés sont les contretemps, les glissés, les hammers, les notes muettes, les syncopes et la durée de certaines notes à respecter: les triangles inversés indiquent qu'il faut accentuer les notes tout en diminuant leur durée et les traits au dessus des notes correspondent à des notes longues.

Pour la basse, les hammers doivent être joués rapidement et ils sont indiqués comme ceci:



Les seules difficultés de la partie de batterie sont les contretemps à la grosse caisse, les breaks sur la caisse claire en doubles-croches et un crescendo à la mesure 37.

Voici le lien pour écouter le morceau:

[The Beatles Taxman](#)


Bon courage à tous !

Tablature basse page 1:

The Beatles Taxman

♩ = 134

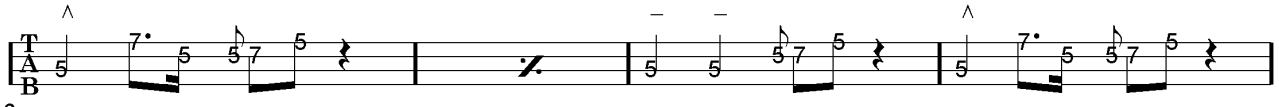
Intro



1

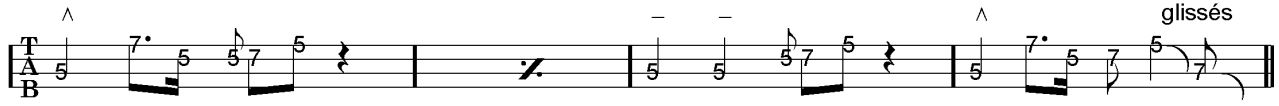
Tablature for the Intro section, measures 1-2. The bass line starts with a 5th fret note on the 5th string, followed by a 7th fret note, a 5th fret note, and a 5th fret note. The second measure contains a whole rest.

Couplet 1



3

Tablature for the first Couplet, measures 3-4. The bass line starts with a 5th fret note, followed by a 7th fret note, a 5th fret note, and a 5th fret note. The second measure contains a whole rest.



7

Tablature for the continuation of the first Couplet, measures 5-6. The bass line starts with a 5th fret note, followed by a 5th fret note, a 5th fret note, and a 5th fret note. The second measure contains a whole rest. The final note is marked as a glissé.

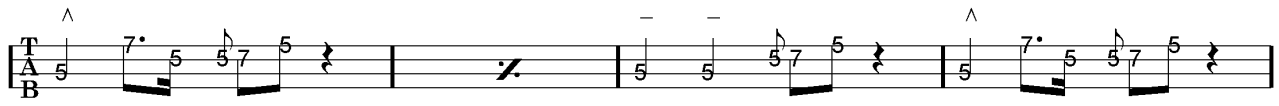
Refrain 1



11

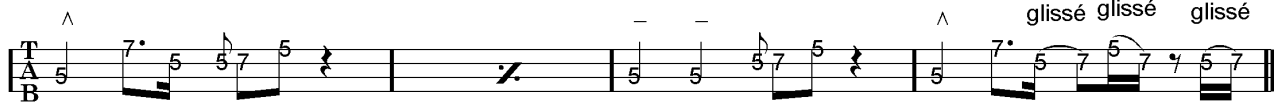
Tablature for the first Refrain, measures 7-10. The bass line starts with a 3rd fret note, followed by a 5th fret note, a 3rd fret note, and a 3rd fret note. The second measure contains a whole rest. The third measure starts with a 5th fret note, followed by a 5th fret note, a 5th fret note, and a 3rd fret note. The fourth measure starts with a 5th fret note, followed by a 7th fret note, a 5th fret note, and a 5th fret note.

Couplet 2



16

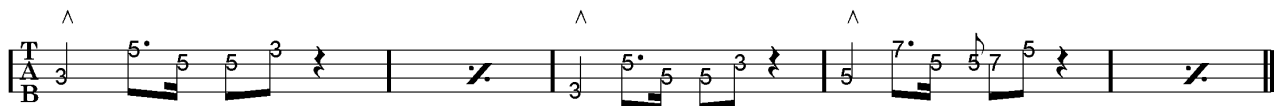
Tablature for the second Couplet, measures 11-12. The bass line starts with a 5th fret note, followed by a 7th fret note, a 5th fret note, and a 5th fret note. The second measure contains a whole rest.



20

Tablature for the continuation of the second Couplet, measures 13-14. The bass line starts with a 5th fret note, followed by a 5th fret note, a 5th fret note, and a 5th fret note. The second measure contains a whole rest. The final note is marked as a glissé.

Refrain 2



24

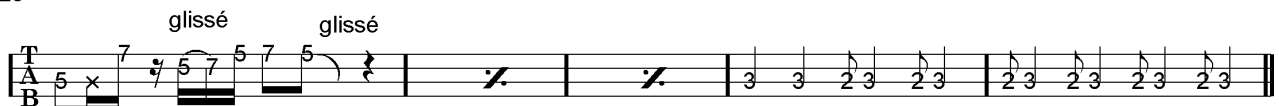
Tablature for the second Refrain, measures 15-18. The bass line starts with a 3rd fret note, followed by a 5th fret note, a 5th fret note, and a 3rd fret note. The second measure contains a whole rest. The third measure starts with a 5th fret note, followed by a 5th fret note, a 5th fret note, and a 3rd fret note. The fourth measure starts with a 5th fret note, followed by a 7th fret note, a 5th fret note, and a 5th fret note.

Pont



29

Tablature for the Pont section, measures 19-22. The bass line starts with a 7th fret note, followed by a 5th fret note, a 7th fret note, and a 5th fret note. The second measure contains a whole rest. The third measure starts with a 5th fret note, followed by a 5th fret note, a 7th fret note, and a 5th fret note. The fourth measure starts with a 5th fret note, followed by a 7th fret note, a 5th fret note, and a 5th fret note.



33

Tablature for the continuation of the Pont section, measures 23-26. The bass line starts with a 7th fret note, followed by a 5th fret note, a 7th fret note, and a 5th fret note. The second measure contains a whole rest. The third measure contains a whole rest. The fourth measure starts with a 3rd fret note, followed by a 3rd fret note, a 2nd fret note, a 2nd fret note, a 2nd fret note, a 2nd fret note, a 2nd fret note, and a 2nd fret note.

Solo guitare



38

Tablature for the Solo guitare section, measures 27-30. The bass line starts with a 5th fret note, followed by a 7th fret note, a 5th fret note, and a 5th fret note. The second measure contains a whole rest. The third measure starts with a 5th fret note, followed by a 5th fret note, a 5th fret note, and a 5th fret note. The fourth measure starts with a 5th fret note, followed by a 7th fret note, a 5th fret note, and a 5th fret note.



42

Tablature for the continuation of the Solo guitare section, measures 31-34. The bass line starts with a 5th fret note, followed by a 5th fret note, a 5th fret note, and a 5th fret note. The second measure contains a whole rest. The third measure starts with a 5th fret note, followed by a 5th fret note, a 5th fret note, and a 5th fret note. The fourth measure starts with a 5th fret note, followed by a 7th fret note, a 5th fret note, and a 7th fret note.

Tablature basse page 2:

Refrain 3

43 44 45

46 Couplet 3

46 47 48

51

49 50

55

Refrain 4

51 52 53 54

59

Couplet 4

55 56 57

64

58 59

68

Refrain 5

60 61 62

72

63 64 65

75

Final

66 67 68

78

Partition basse page 1:

The Beatles Taxman

♩ = 134

Intro

1

Couplet 1

3

7

Refrain 1

11

Couplet 2

16

20

Refrain 2

24

Pont glissé glissé glissé glissé glissé glissé

29

33

Solo guitare

38

42

Partition basse page 2:

Refrain 3

46

Couplet 3

51

55

Refrain 4

59

Couplet 4

64

68

Refrain 5

72

75

Final
ad lib. ^

78

Partition batterie page 1:

The Beatles Taxman

Intro

1

Musical notation for the Intro, starting at measure 1. It features a 4/4 time signature and a key signature of one flat. The notation shows a series of chords and single notes, with 'x' marks above the notes indicating a crash cymbal. The piece ends with a double bar line and a repeat sign.

Couplets 1 / 2

3

Musical notation for the first two couplets, starting at measure 3. It continues the rhythmic pattern of the intro, with 'x' marks for crash cymbals and '*' marks for snare drum. The piece ends with a double bar line and a repeat sign.

7

Musical notation for the continuation of the couplets, starting at measure 7. It features a more complex rhythmic pattern with eighth notes and sixteenth notes, ending with a double bar line and a repeat sign.

Refrain 1

11

Musical notation for Refrain 1, starting at measure 11. It features a consistent rhythmic pattern with 'x' marks for crash cymbals and '*' marks for snare drum. The piece ends with a double bar line and a repeat sign.

Refrain 2

24

Musical notation for Refrain 2, starting at measure 24. It continues the rhythmic pattern of Refrain 1, ending with a double bar line and a repeat sign.

Pont

29

Musical notation for the Pont section, starting at measure 29. It features a simple rhythmic pattern with 'x' marks for crash cymbals. The piece ends with a double bar line and a repeat sign.

37

Musical notation for the continuation of the Pont section, starting at measure 37. It features a simple rhythmic pattern with 'x' marks for crash cymbals. The piece ends with a double bar line and a repeat sign.

Solo guitare = crash 1ère fois seulement

38

Musical notation for the first part of the guitar solo, starting at measure 38. It features a consistent rhythmic pattern with 'x' marks for crash cymbals. The piece ends with a double bar line and a repeat sign.

45

Musical notation for the second part of the guitar solo, starting at measure 45. It features a consistent rhythmic pattern with 'x' marks for crash cymbals. The piece ends with a double bar line and a repeat sign.

Partition batterie page 2:

Refrain 3

46

Couplet 3

51

55

Refrain 4

59

Couplet 4

64

68

Refrain 5

72

75

Final

ad lib. 78

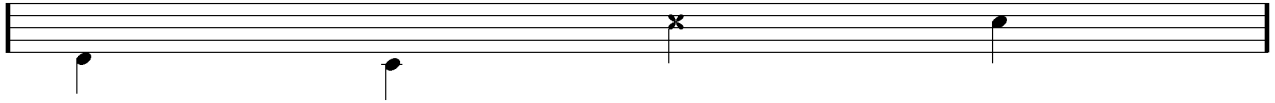
Écriture batterie:

bd 1

bd 2

rim-shot

sd

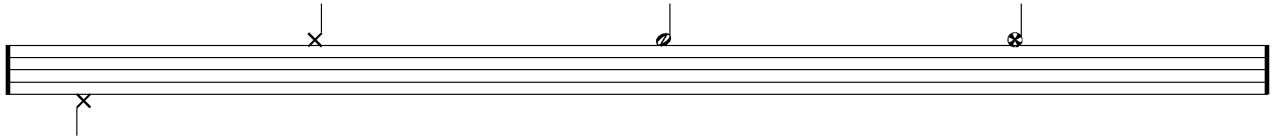


HH Pied

HH fermée

HH entrouverte

HH ouverte

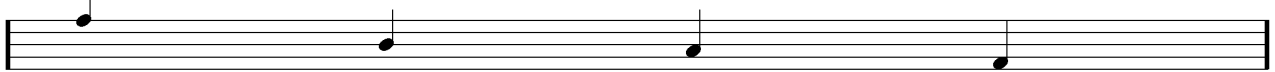


tom 1

tom 2

tom 3

tom 4

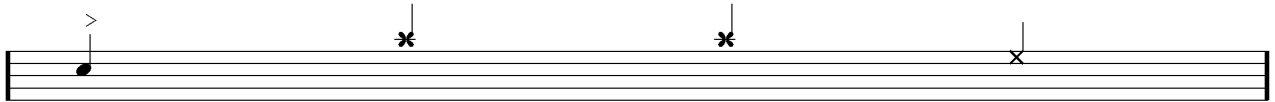


accent

note mutée

crash

cloche

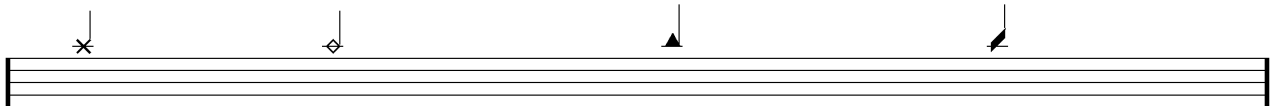


ride

dôme de cymbale

chinoise

splash



flas

note muette

