

The Beatles Lady Madonna:

Table des matières

Introduction:.....2
Tablature basse page 1:.....3
Tablature basse page 2:.....4
Partition basse page 1:.....5
Partition basse page 2:.....6
Partition batterie page 1:.....7
Partition batterie page 2:.....8
Écriture batterie:.....9

Introduction:

Les seules difficultés de cette ligne de basse sont les hammers en doubles-croches et les syncopes sur le final.

Les seules difficultés de cette partie de batterie sont les doubles-croches à la grosse caisse et les syncopes pour la cymbale crash sur le final.

Voici le lien pour écouter le morceau:

[The Beatles Lady Madonna](#)

Bon courage à tous !

Tablature basse page 1:
The Beatles Lady Madonna
 Intro,piano = 4 mesures sans la basse

T 4
A 4
B 4

1

Refrain 1

T 0 0 3 4 0 0 3 4 2 | 0 0 3 4 0 0 3 4 2 | 0 0 3 4 0 0 2 2 | 3 3 5 5 2 2 2 2

6

T 0 0 3 4 0 0 3 4 2 | 0 0 3 4 0 0 3 4 2 | 0 0 3 4 0 0 2 2 | 3 3 5 5 2 2 2 2

10

Couplet 1

T 0 0 3 3 2 2 0 0 | 5 5 3 3 2 2 0 0 | 3 3 2 2 0 0 3 3 | 0 0 2 2 3 3 2 2

14

Pré-Refrain 1

T 0 0 3 3 2 2 0 0 | 5 5 3 3 2 2 0 0 || 3 2 | 2 0

18

20

Refrain 2

T 0 0 3 4 0 0 3 4 2 | 0 0 3 4 0 0 3 4 2 | 0 0 3 4 0 0 2 2 | 3 3 5 5 2 2 2 2

22

Instrumental 1

T 0 0 3 4 0 0 3 4 2 | 0 0 3 4 0 0 3 4 2 | 0 0 3 4 0 0 2 2 | 3 3 5 5 2 2 2 2

26

Solo

T 0 0 3 3 2 2 0 0 | 5 5 3 3 2 2 0 0 | 3 3 2 2 0 0 3 3 | 0 2 3 0 2 3

30

Pré-Refrain 2

T 0 0 3 3 2 2 0 0 | 5 5 3 3 2 2 0 0 || 3 2 | 2 2 2

34

36

Tablature basse page 2:

Refrain 3



38

Instrumental 2



42

Couplet 2



46

Pré-Refrain 3



50

52

Refrain 4



54

Final

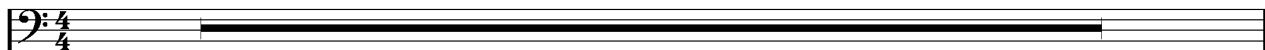


58

Partition basse page 1:

The Beatles Lady Madonna

Intro, piano = 4 mesures sans la basse



1

Refrain 1



6



10

Couplet 1



14

Pré-Refrain 1



18

20

Refrain 2



22

Instrumental 1



26

Solo



30

Pré-Refrain 2



34

36

Refrain 3



38

Partition basse page 2:

Instrumental 2

Musical notation for Instrumental 2, measures 42-45. The notation is in bass clef and features a rhythmic pattern of eighth and sixteenth notes with a key signature of one sharp (F#).

42

Couplet 2

Musical notation for Couplet 2, measures 46-49. The notation is in bass clef and features a rhythmic pattern of eighth and sixteenth notes.

46

Pré-Refrain 3

Musical notation for Pré-Refrain 3, measures 50-52. The notation is in bass clef and features a rhythmic pattern of eighth and sixteenth notes, ending with a double bar line.

50 52

Refrain 4

Musical notation for Refrain 4, measures 54-57. The notation is in bass clef and features a rhythmic pattern of eighth and sixteenth notes with a key signature of one sharp (F#).

54

Final

Musical notation for Final, measures 58-61. The notation is in bass clef and features a rhythmic pattern of eighth and sixteenth notes, ending with a double bar line. The key signature changes to natural (F) in the final measure.

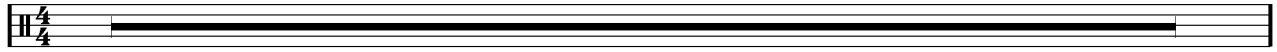
58

Partition batterie page 1:

♩ = 115

The Beatles Lady Madonna

Intro piano = 4 mesures sans la batterie

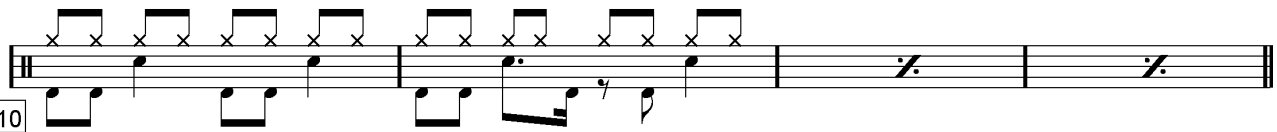


1

Refrain 1

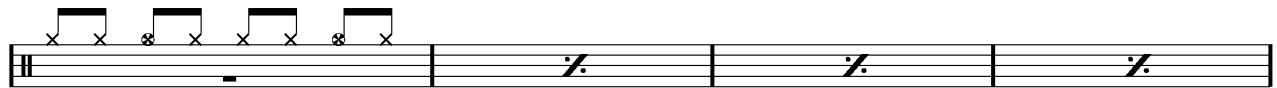


6



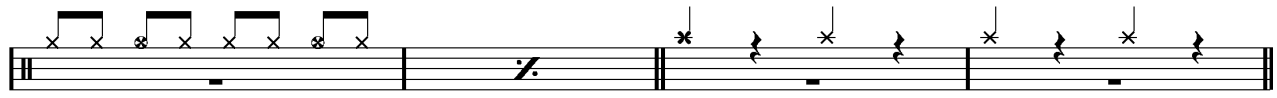
10

Couplet 1



14

Prè-Refrain 1



18

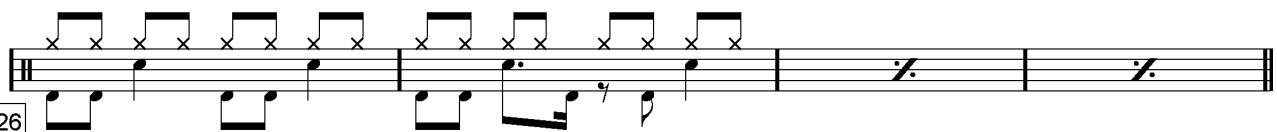
20

Refrain 2



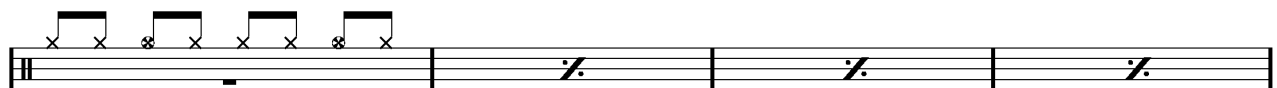
22

Instrumental 1



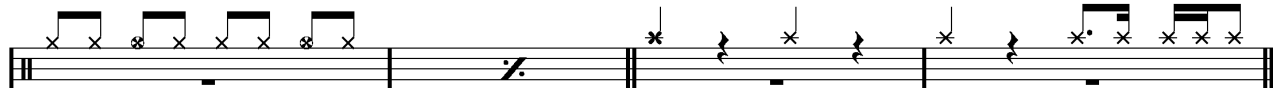
26

Solo



30

Prè-Refrain 2



34

36

Partition batterie page 2:

Refrain 3

Musical notation for Refrain 3, measures 38-41. The notation is on a single staff with a double bar line at the beginning. Measure 38 starts with a drum set icon. Measures 39, 40, and 41 contain rhythmic patterns with 'x' marks above notes. Measure 41 ends with a double bar line.

Musical notation for Refrain 3, measures 42-45. The notation is on a single staff with a double bar line at the beginning. Measure 42 starts with a drum set icon. Measures 43, 44, and 45 contain rhythmic patterns with 'x' marks above notes. Measure 45 ends with a double bar line.

Couplet 3

Musical notation for Couplet 3, measures 46-49. The notation is on a single staff with a double bar line at the beginning. Measure 46 starts with a drum set icon. Measures 47, 48, and 49 contain rhythmic patterns with 'x' marks above notes. Measure 49 ends with a double bar line.

Prè-Refrain 3

Musical notation for Prè-Refrain 3, measures 50-51. The notation is on a single staff with a double bar line at the beginning. Measure 50 starts with a drum set icon. Measure 51 contains rhythmic patterns with 'x' marks above notes. Measure 51 ends with a double bar line.

Refrain 4

Musical notation for Refrain 4, measures 52-57. The notation is on a single staff with a double bar line at the beginning. Measure 52 starts with a drum set icon. Measures 53, 54, 55, 56, and 57 contain rhythmic patterns with 'x' marks above notes. Measure 57 ends with a double bar line.

Final

Musical notation for Final, measures 58-61. The notation is on a single staff with a double bar line at the beginning. Measure 58 starts with a drum set icon. Measures 59, 60, and 61 contain rhythmic patterns with 'x' marks above notes. Measure 61 ends with a double bar line.

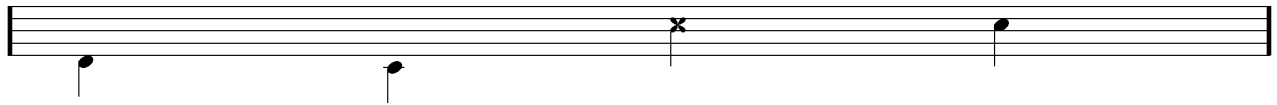
Écriture batterie:

bd 1

bd 2

rim-shot

sd

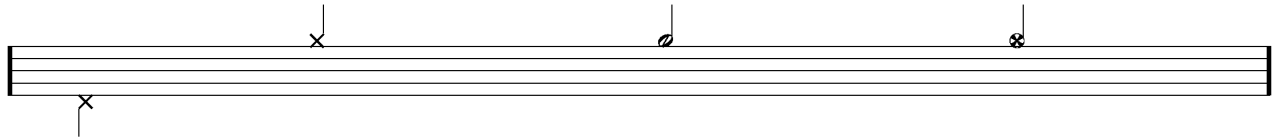


HH Pied

HH fermée

HH entrouverte

HH ouverte

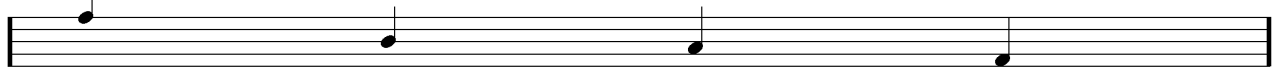


tom 1

tom 2

tom 3

tom 4

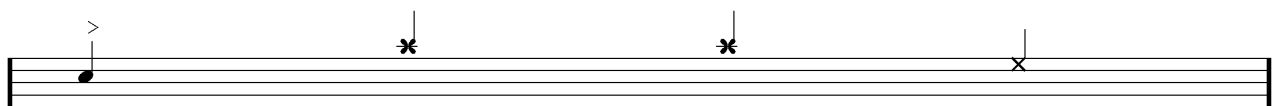


accent

note mutée

crash

cloche

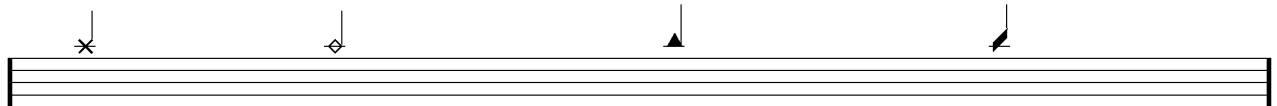


ride

dôme de cymbale

chinoise

splash



flas

note muette

