

The Beatles i want to hold your hand:

Table des matières

Introduction:.....	2
Tablature basse page 1:.....	3
Tablature basse page 2:.....	4
Partition basse page 1:.....	5
Partition basse page 2:.....	6
Partition batterie page 1:.....	7
Partition batterie page 2:.....	8
Écriture batterie:.....	9

Introduction:

Pour les deux instruments, attention au départ en anacrouse et à bien négocier le ralentissement qui est situé à la fin du morceau !

Une ligne de basse assez facile mais avec quelques subtilités: il y a des notes courtes et des notes longues, des contretemps et des syncopes.

Pour la partition il y a 1 dièse à la clef: le Fa#.

Pour la partie de batterie, les seules difficultés sont les contretemps à la grosse caisse, les syncopes sur la cymbale crash, les flas sur la caisse claire et les breaks en doubles-croches sur les toms.

Voici le lien pour écouter le morceau:

[The Beatles i want to hold your hand](#)

Bon courage à tous !

Tablature basse page 1:

The Beatles I Want To Hold Your Hand

Intro



1 2

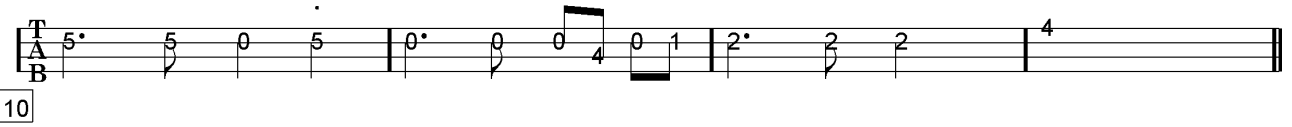
The intro consists of two staves of music. The first staff shows a sequence of notes: 3 2 0, followed by a double bar line, then 0 0 0 0 0 0 3 2 0, another double bar line, 0 0 0 0 0 0 3 2 0, a third double bar line, 0 0 0 0 0 0 0 0 0 0, and a final double bar line, 0 0 0 0 0 0 0 0 0. The second staff shows a sequence of notes: 0 0 0 0 0 0 3 2 0, followed by a double bar line, then 0 0 0 0 0 0 0 0 0 0, and a final double bar line, 0 0 0 0 0 0 0 0 0. Boxed numbers 1 and 2 are placed below the first and second measures respectively.

Couplet 1



6

The first staff of Couplet 1 shows notes: 5 0 5, followed by a double bar line, 0 0 0 4 0 1, another double bar line, 2 2 2, a third double bar line, 2 2 2 0, and a final double bar line. Boxed number 6 is below the first measure.



10

The second staff of Couplet 1 shows notes: 5 0 5, followed by a double bar line, 0 0 0 4 0 1, another double bar line, 2 2 2, a third double bar line, 4, and a final double bar line. Boxed number 10 is below the first measure.

Refrain 1



14

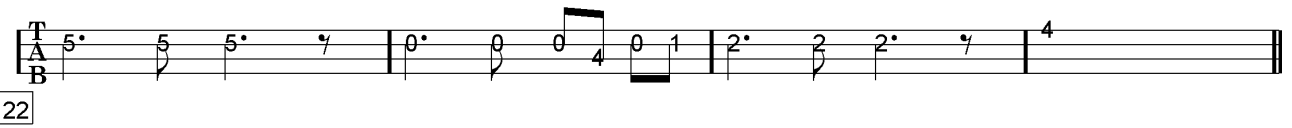
The first staff of Refrain 1 shows notes: 3 3 0, followed by a double bar line, 5 5 2 2, another double bar line, 3 3 0, a third double bar line, 5 5 0 0 5, and a final double bar line. Boxed number 14 is below the first measure.

Couplet 2



18

The first staff of Couplet 2 shows notes: 0 5 5 7, followed by a double bar line, 0 0 0 4 0 1, another double bar line, 2 2 2 7, a third double bar line, 4 4 4 0, and a final double bar line. Boxed number 18 is below the first measure.



22

The second staff of Couplet 2 shows notes: 5 5 5 7, followed by a double bar line, 0 0 0 4 0 1, another double bar line, 2 2 2 7, a third double bar line, 4, and a final double bar line. Boxed number 22 is below the first measure.

Refrain 2



26

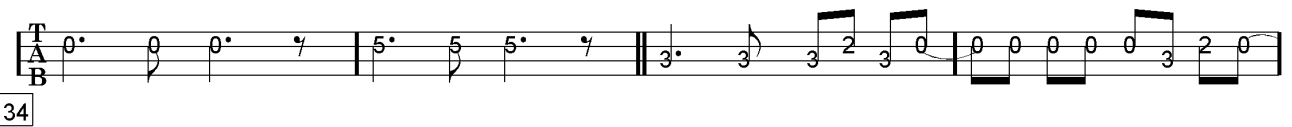
The first staff of Refrain 2 shows notes: 3 0 7, followed by a double bar line, 5 7 2 7, another double bar line, 3 0 7, a third double bar line, 5 5 0 5, and a final double bar line. Boxed number 26 is below the first measure.

Pont 1



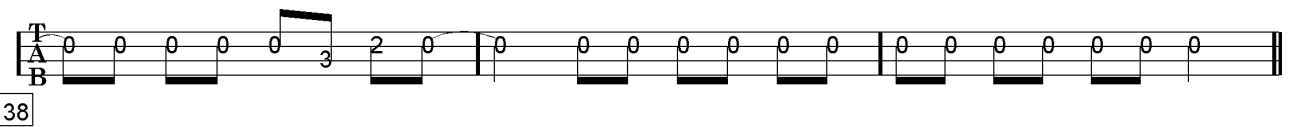
30

The first staff of Pont 1 shows notes: 0 0 0 7, followed by a double bar line, 5 5 5 7, another double bar line, 3 3 3 7, a third double bar line, 7 7 7 7, and a final double bar line. Boxed number 30 is below the first measure.



34

The second staff of Pont 1 shows notes: 0 0 0 7, followed by a double bar line, 5 5 5 7, another double bar line, 3 3 3 2 3 0, a third double bar line, 0 0 0 0 0 0 3 2 0, and a final double bar line. Boxed number 34 is below the first measure.



38

The third staff of Pont 1 shows notes: 0 0 0 0 0 3 2 0, followed by a double bar line, 0 0 0 0 0 0 0 0, another double bar line, 0 0 0 0 0 0 0 0, a third double bar line, 0 0 0 0 0 0 0 0, and a final double bar line. Boxed number 38 is below the first measure.

Tablature basse page 2:

Couplet 3



41



45

Refrain 3



49

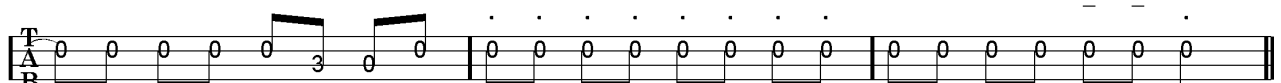
Pont 2



53

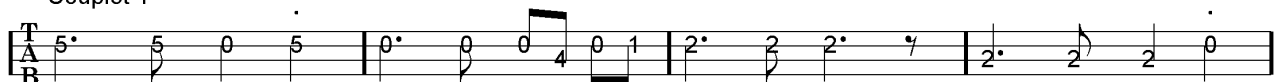


57

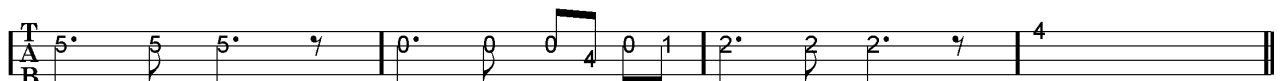


61

Couplet 4



64

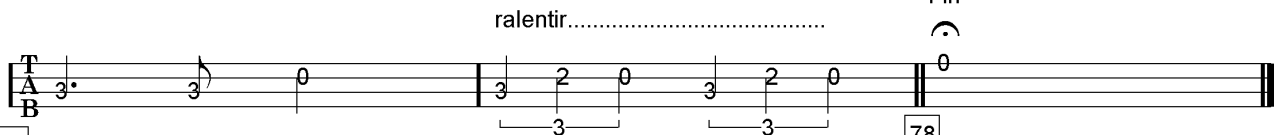


68

Refrain 4



72



76

Fin

78

Partition basse page 1:

The Beatles I Want To Hold Your Hand

Intro

Musical notation for the Intro section, measures 1-5. The key signature is one sharp (F#) and the time signature is 4/4. The notation consists of a single bass staff with a treble clef. Measure 1 starts with a quarter rest, followed by quarter notes G4, A4, and B4. Measure 2 has quarter notes C5, B4, A4, and G4. Measure 3 has quarter notes F#4, E4, D4, and C4. Measure 4 has quarter notes B3, A3, G3, and F#3. Measure 5 has quarter notes E3, D3, C3, and B2.

Couplet 1

Musical notation for Couplet 1, measures 6-9. Measure 6 has quarter notes G4, A4, B4, and C5. Measure 7 has quarter notes B4, A4, G4, and F#4. Measure 8 has quarter notes E4, D4, C4, and B3. Measure 9 has quarter notes A3, G3, F#3, and E3.

Musical notation for Couplet 1 continuation, measures 10-13. Measure 10 has quarter notes D3, C3, B2, and A2. Measure 11 has quarter notes G2, F#2, E2, and D2. Measure 12 has quarter notes C2, B1, A1, and G1. Measure 13 has a whole note G1.

Refrain 1

Musical notation for Refrain 1, measures 14-17. Measure 14 has quarter notes G4, A4, B4, and C5. Measure 15 has quarter notes B4, A4, G4, and F#4. Measure 16 has quarter notes E4, D4, C4, and B3. Measure 17 has quarter notes A3, G3, F#3, and E3.

Couplet 2

Musical notation for Couplet 2, measures 18-21. Measure 18 has quarter notes G4, A4, B4, and C5. Measure 19 has quarter notes B4, A4, G4, and F#4. Measure 20 has quarter notes E4, D4, C4, and B3. Measure 21 has quarter notes A3, G3, F#3, and E3.

Musical notation for Couplet 2 continuation, measures 22-25. Measure 22 has quarter notes D3, C3, B2, and A2. Measure 23 has quarter notes G2, F#2, E2, and D2. Measure 24 has quarter notes C2, B1, A1, and G1. Measure 25 has a whole note G1.

Refrain 2

Musical notation for Refrain 2, measures 26-29. Measure 26 has a whole note G1. Measure 27 has a whole note G1. Measure 28 has a whole note G1. Measure 29 has quarter notes G1, A1, B1, and C2.

Pont 1

Musical notation for Pont 1, measures 30-33. Measure 30 has quarter notes G4, A4, B4, and C5. Measure 31 has quarter notes B4, A4, G4, and F#4. Measure 32 has quarter notes E4, D4, C4, and B3. Measure 33 has quarter notes A3, G3, F#3, and E3.

Musical notation for Pont 1 continuation, measures 34-37. Measure 34 has quarter notes D3, C3, B2, and A2. Measure 35 has quarter notes G2, F#2, E2, and D2. Measure 36 has quarter notes C2, B1, A1, and G1. Measure 37 has quarter notes G1, A1, B1, and C2.

Musical notation for Pont 1 continuation, measures 38-41. Measure 38 has quarter notes G4, A4, B4, and C5. Measure 39 has quarter notes B4, A4, G4, and F#4. Measure 40 has quarter notes E4, D4, C4, and B3. Measure 41 has quarter notes A3, G3, F#3, and E3.

Partition basse page 2:

Couplet 3



Refrain 3



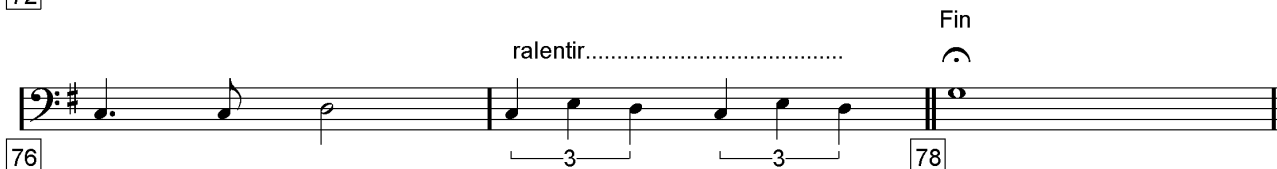
Pont 2



Couplet 4



Refrain 4



Partition batterie page 1:

The Beatles I Want To Hold Your Hand

♩ = 132

Intro

Musical notation for the Intro section, measures 1-5. The notation is on a single staff with a treble clef and a 4/4 time signature. It features a series of eighth notes with 'x' marks above them, indicating cymbal hits. The bass line consists of quarter notes. Measure 1 starts with a box containing the number '1'. Measure 5 ends with a box containing the number '2'.

Couplets 1 / 2

Musical notation for the first two couplets, measures 6-9. The notation is on a single staff with a treble clef and a 4/4 time signature. It features a series of eighth notes with 'x' marks above them, indicating cymbal hits. The bass line consists of quarter notes. Measure 6 starts with a box containing the number '6'. Measure 9 ends with a double bar line and repeat dots.

2 croches la
1ère fois

Musical notation for the first two couplets, measures 10-13. The notation is on a single staff with a treble clef and a 4/4 time signature. It features a series of eighth notes with 'x' marks above them, indicating cymbal hits. The bass line consists of quarter notes. Measure 10 starts with a box containing the number '10'. Measure 13 ends with a double bar line and repeat dots.

Refrains 1 / 2

Musical notation for the first two refrains, measures 14-17. The notation is on a single staff with a treble clef and a 4/4 time signature. It features a series of eighth notes with 'x' marks above them, indicating cymbal hits. The bass line consists of quarter notes. Measure 14 starts with a box containing the number '14'. Measure 17 ends with a double bar line and repeat dots.

Pont 1

Musical notation for the first bridge, measures 18-29. The notation is on a single staff with a treble clef and a 4/4 time signature. It features a series of eighth notes with 'x' marks above them, indicating cymbal hits. The bass line consists of quarter notes. Measure 18 starts with a box containing the number '30'. Measure 29 ends with a double bar line and repeat dots.

Musical notation for the first bridge, measures 30-33. The notation is on a single staff with a treble clef and a 4/4 time signature. It features a series of eighth notes with 'x' marks above them, indicating cymbal hits. The bass line consists of quarter notes. Measure 30 starts with a box containing the number '34'. Measure 33 ends with a double bar line and repeat dots.

Musical notation for the first bridge, measures 34-37. The notation is on a single staff with a treble clef and a 4/4 time signature. It features a series of eighth notes with 'x' marks above them, indicating cymbal hits. The bass line consists of quarter notes. Measure 34 starts with a box containing the number '38'. Measure 37 ends with a double bar line and repeat dots.

Couplet 3

Musical notation for the third couplet, measures 38-41. The notation is on a single staff with a treble clef and a 4/4 time signature. It features a series of eighth notes with 'x' marks above them, indicating cymbal hits. The bass line consists of quarter notes. Measure 38 starts with a box containing the number '41'. Measure 41 ends with a double bar line and repeat dots.

Musical notation for the third couplet, measures 42-45. The notation is on a single staff with a treble clef and a 4/4 time signature. It features a series of eighth notes with 'x' marks above them, indicating cymbal hits. The bass line consists of quarter notes. Measure 42 starts with a box containing the number '45'. Measure 45 ends with a double bar line and repeat dots.

Partition batterie page 2:

Refrain 3

49

Pont 2

53

57

61

Couplet 4

64

68

Refrain 4

72

76
ralentir.....
3 3
3 3
78

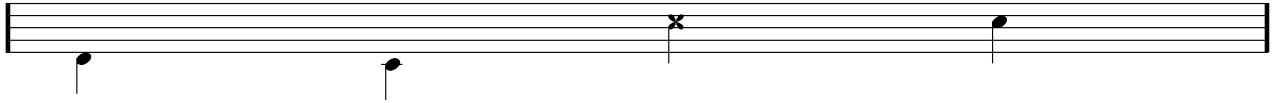
Écriture batterie:

bd 1

bd 2

rim-shot

sd

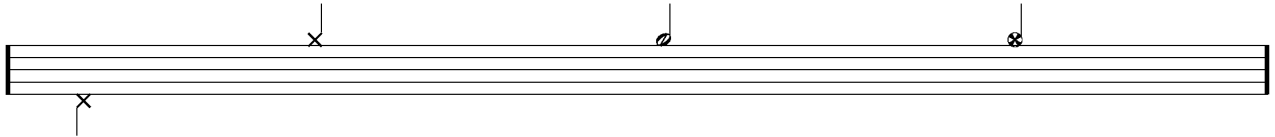


HH Pied

HH fermée

HH entrouverte

HH ouverte

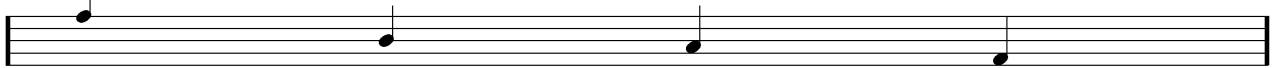


tom 1

tom 2

tom 3

tom 4

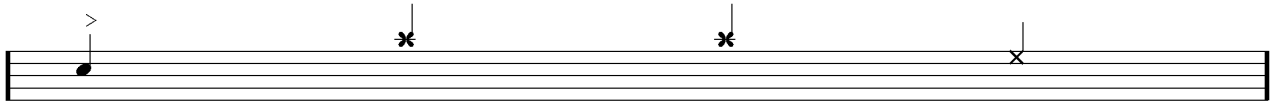


accent

note mutée

crash

cloche

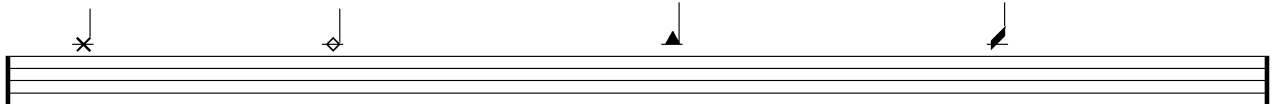


ride

dôme de cymbale

chinoise

splash



flas

note muette

