

**The Beatles Come Together:**

**Table des matières**

Introduction:.....	2
Tablature basse page 1:.....	3
Tablature basse page 2:.....	4
Partition basse page 1:.....	5
Partition basse page 2:.....	6
Partition batterie page 1:.....	7
Partition batterie page 2:.....	8
Partition batterie page 3:.....	9
Écriture batterie:.....	10

### **Introduction:**

Les seules difficultés à signaler pour cette ligne de basse sont les hammers en doubles-croches, les glissés et quelques accents.

Pour la partition il y a 1 bémol à la clef.

Pour la batterie, la plus grosse difficulté c'est le débit de notes (même si le tempo n'est pas très haut). **Attention ! J'utilise une écriture différente pour la hauteur des toms par rapport aux autres partitions qui sont disponibles sur mon site, consultez l'écriture de la batterie qui est située à la fin de ce dossier.**

Voici le lien pour écouter le morceau:

[The Beatles Come Together](#)

Bon courage à tous !

**Tablature basse page 1:**

**The Beatles Come Together**

Intro

1

The intro consists of a single staff with a 4/4 time signature. It begins with a treble clef and a bass clef. The first measure contains a quarter note on the 10th fret of the B string, followed by a quarter note on the 10th fret of the A string, and a half note on the 12th fret of the G string. The next three measures are marked with a slash and a diagonal line, indicating they are to be played as a single chord.

Couplet 1

5

The first measure of the first couplet is identical to the intro. The following three measures are marked with a slash and a diagonal line.

9

This staff shows the bass line for the first couplet. It starts with a quarter rest, followed by a quarter note on the 5th fret of the E string, a quarter note on the 5th fret of the D string, and a quarter note on the 7th fret of the G string. The next three measures are marked with a slash and a diagonal line.

Instrumental 1

13

The first measure of the instrumental section is identical to the previous couplet. The following three measures are marked with a slash and a diagonal line.

Couplet 2

17

The first measure of the second couplet is identical to the previous couplet. The following three measures are marked with a slash and a diagonal line.

21

This staff shows the bass line for the second couplet. It starts with a quarter rest, followed by a quarter note on the 5th fret of the E string, a quarter note on the 5th fret of the D string, and a quarter note on the 7th fret of the G string. The next three measures are marked with a slash and a diagonal line.

Refrain 1

25

The first measure of the first refrain consists of a quarter note on the 2nd fret of the E string, a quarter note on the 2nd fret of the D string, a quarter note on the 2nd fret of the G string, a quarter note on the 5th fret of the E string, and a quarter note on the 5th fret of the D string. The next three measures are marked with a slash and a diagonal line.

Instrumental 2

27

The first measure of the second instrumental section is identical to the previous couplet. The following three measures are marked with a slash and a diagonal line. The fourth measure contains a quarter note on the 10th fret of the B string, a quarter note on the 10th fret of the A string, and a half note on the 12th fret of the G string. The fifth measure contains a quarter note on the 10th fret of the B string, a quarter note on the 10th fret of the A string, and a half note on the 12th fret of the G string. The sixth measure contains a quarter note on the 10th fret of the B string, a quarter note on the 12th fret of the G string, and a quarter note on the 10th fret of the A string.

Couplet 3

31

The first measure of the third couplet is identical to the previous couplet. The following three measures are marked with a slash and a diagonal line.

35

This staff shows the bass line for the third couplet. It starts with a quarter rest, followed by a quarter note on the 5th fret of the E string, a quarter note on the 5th fret of the D string, and a quarter note on the 7th fret of the G string. The next three measures are marked with a slash and a diagonal line.

Refrain 2

39

The first measure of the second refrain is identical to the first refrain. The next three measures are marked with a slash and a diagonal line.

Instrumental 3

41

The first measure of the third instrumental section is identical to the previous couplet. The following three measures are marked with a slash and a diagonal line. The fourth measure contains a quarter note on the 10th fret of the B string, a quarter note on the 10th fret of the A string, and a half note on the 12th fret of the G string. The fifth measure contains a quarter note on the 10th fret of the B string, a quarter note on the 10th fret of the A string, and a half note on the 12th fret of the G string. The sixth measure contains a quarter note on the 10th fret of the B string, a quarter note on the 12th fret of the G string, and a quarter note on the 10th fret of the A string.

## Tablature basse page 2:

### Pont

43

T  
A  
B

### Solo Guitare

47

51

### Couplet 4

53

57

### Refrain 3

61

### Instrumental 4

63

### 9x Final

67

85

### ad lib.

87

89

**Partition basse page 1:**

**The Beatles Come Together**

Intro

1

Detailed description: This block contains the first four measures of the bass line. It starts with a bass clef and a 4/4 time signature. The first measure contains a quarter note G2, followed by eighth notes A2, B2, and C3. The next three measures each contain a whole rest, indicated by a double bar line with a slash and a dot.

Couplet 1

5

Detailed description: This block contains measures 5 through 8. It begins with a quarter note G2, followed by eighth notes A2, B2, and C3. Measures 6, 7, and 8 each contain a whole rest.

9

Detailed description: This block contains measures 9 through 12. Measure 9 starts with a quarter note G2, followed by eighth notes A2, B2, and C3. Measure 10 has a quarter note D3. Measure 11 has a whole rest. Measure 12 has a whole rest.

Instrumental 1

13

Detailed description: This block contains measures 13 through 16. It begins with a quarter note G2, followed by eighth notes A2, B2, and C3. Measures 14, 15, and 16 each contain a whole rest.

Couplet 2

17

Detailed description: This block contains measures 17 through 20. It begins with a quarter note G2, followed by eighth notes A2, B2, and C3. Measures 18, 19, and 20 each contain a whole rest.

21

Detailed description: This block contains measures 21 through 24. Measure 21 starts with a quarter note G2, followed by eighth notes A2, B2, and C3. Measure 22 has a quarter note D3. Measure 23 has a whole rest. Measure 24 has a whole rest.

Refrain 1

25

Detailed description: This block contains measures 25 and 26. Measure 25 starts with a quarter note G2, followed by eighth notes A2, B2, and C3. Measure 26 has a whole rest.

Instrumental 2

27

Detailed description: This block contains measures 27 through 30. It begins with a quarter note G2, followed by eighth notes A2, B2, and C3. Measures 28, 29, and 30 each contain a whole rest.

Couplet 3

31

Detailed description: This block contains measures 31 through 34. It begins with a quarter note G2, followed by eighth notes A2, B2, and C3. Measures 32, 33, and 34 each contain a whole rest.

35

Detailed description: This block contains measures 35 through 38. Measure 35 starts with a quarter note G2, followed by eighth notes A2, B2, and C3. Measure 36 has a quarter note D3. Measure 37 has a whole rest. Measure 38 has a whole rest.

Refrain 2

39

Detailed description: This block contains measures 39 and 40. Measure 39 starts with a quarter note G2, followed by eighth notes A2, B2, and C3. Measure 40 has a whole rest.

Instrumental 3

41

Detailed description: This block contains measures 41 through 44. It begins with a quarter note G2, followed by eighth notes A2, B2, and C3. Measures 42, 43, and 44 each contain a whole rest.

## Partition basse page 2:

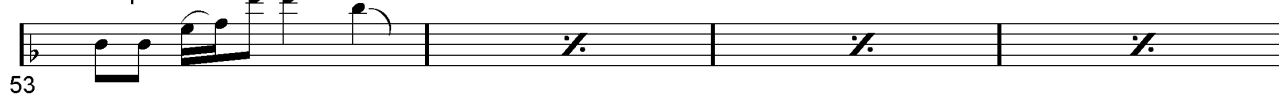
Pont



Solo Guitare



Couplet 4



Refrain 3



Instrumental 4



4x Final



ad lib.



**Partition batterie page 1:**

**The Beatles Come Together**

Intro

1

Couplet 1

5

9

Instrumental 1

13

Couplet 2

17

21

Refrain 1

25

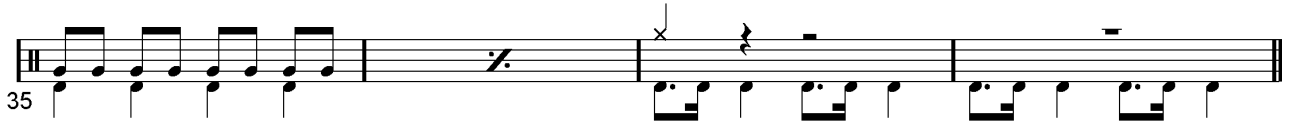
Instrumental 3

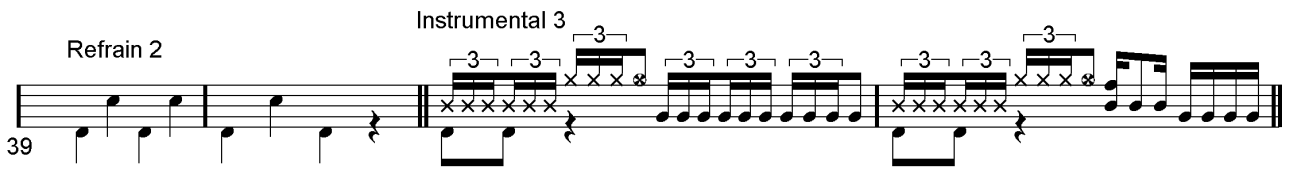
28

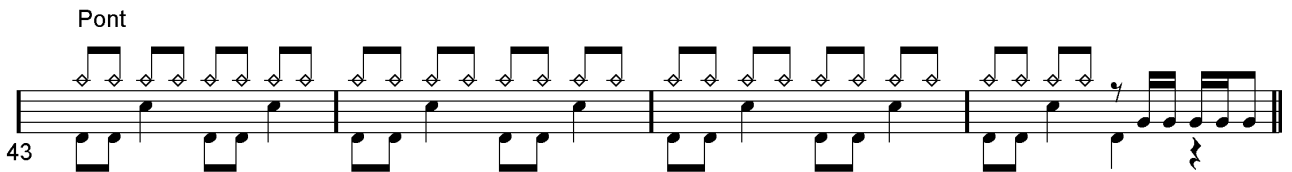
Couplet 3

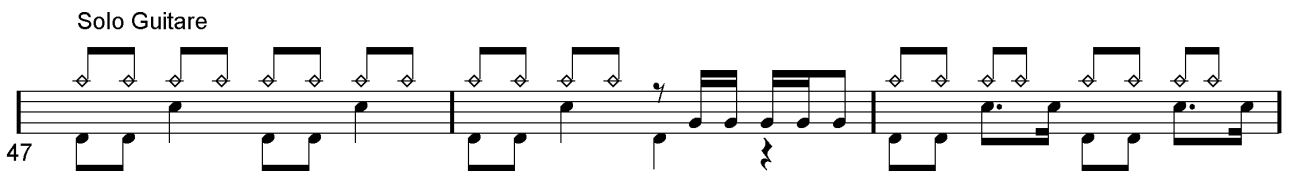
31

**Partition batterie page 2:**

35 

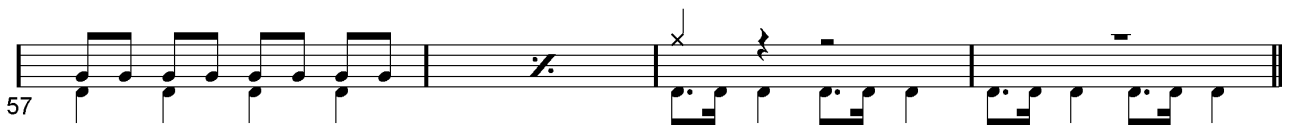
39 **Refrain 2** **Instrumental 3** 

43 **Pont** 

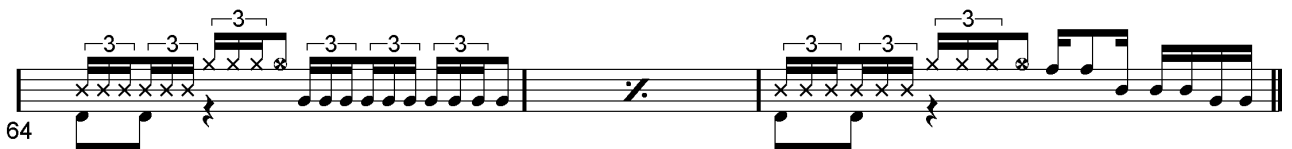
47 **Solo Guitare** 

50 

53 **Couplet 4** 

57 

61 **Refrain 3** **Instrumental 4** 

64 



### Partition batterie page 3:

Final

67

71

75

79

83

87

ad lib

91

## Écriture batterie:

bd 1                      bd 2                      rim-shot                      sd

HH Pied                      HH fermée                      HH entrouverte                      HH ouverte

tom 1                      tom 2                      tom 3                      tom 4

accent                      note mutée                      crash                      cloche

ride                      dôme de cymbale                      chinoise                      splash

fla                      note muette

The image displays musical notation for various drum sounds on a five-line staff. The notation includes stems, dots, and specific symbols like 'x' and '\*' to represent different drum techniques. The sounds are organized into rows: snare (bd 1, bd 2, rim-shot, sd), hi-hat (HH Pied, HH fermée, HH entrouverte, HH ouverte), tom (tom 1, tom 2, tom 3, tom 4), cymbal (accent, note mutée, crash, cloche), and floor tom (ride, dôme de cymbale, chinoise, splash). A final row shows 'fla' (flam) and 'note muette' (mute note).