

Tesla 2 Late 4 Love:

Table des matières

Introduction:.....	2
Tablature basse page 1:.....	3
Tablature basse page 2:.....	4
Partition basse page 1:.....	5
Partition basse page 2:.....	6
Partition batterie page 1:.....	7
Partition batterie page 2:.....	8
Partition batterie page 3:.....	9
Partition batterie page 4:.....	10
Écriture batterie:.....	11

Introduction:

Une ligne de basse assez difficile avec des doubles-croches qui ne sont pas faciles à exécuter sur un tempo aussi haut, il y a également des contretemps, des glissés, des hammers et des syncopes.

Pour la partition il y a 2 dièses à la clef: le Fa# et le Do#.

La partie de batterie est d'un niveau assez élevé, dès l'intro du morceau il y a des doubles-croches plus un travail d'accentuation sur la caisse claire, ensuite il y a beaucoup de variations de grosse caisse et de cymbales, il y a également des breaks en doubles-croches ou en sextolets qui ne sont pas faciles exécuter. **Attention ! J'utilise une écriture différente pour la hauteur des toms par rapport aux autres partitions qui sont disponibles sur mon site, consultez l'écriture de la batterie qui est située à la fin de ce dossier.**

Voici le lien pour écouter le morceau:

[tesla 2 late 4 love](#)

Bon courage à tous !

Tablature basse page 1:

Tesla 2 Late 4 Love

Break

1

Musical notation for the Break section, measures 1-2. The notation shows a double bar line at the end of measure 2, indicating the end of the section.

3x Intro

3

Musical notation for the Intro section, measures 3-6. The notation includes a repeat sign at the beginning and a double bar line at the end of measure 6.

18

Musical notation for the Intro section, measures 7-17. The notation includes a double bar line at the end of measure 17.

Couplet 1

20

Musical notation for Couplet 1, measures 18-19. The notation includes a double bar line at the end of measure 19.

24

Musical notation for Couplet 1, measures 20-23. The notation includes a double bar line at the end of measure 23.

Pré-Refrain 1

28

Musical notation for Pré-Refrain 1, measures 24-27. The notation includes a double bar line at the end of measure 27.

Refrain 1

32

Musical notation for Refrain 1, measures 28-31. The notation includes a double bar line at the end of measure 31.

36

Musical notation for Refrain 1, measures 32-35. The notation includes a double bar line at the end of measure 35.

Solo 1

40

Musical notation for Solo 1, measures 36-42. The notation includes a double bar line at the end of measure 42.

43

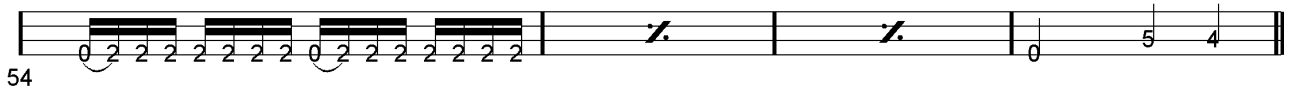
Musical notation for Solo 1, measures 43-44. The notation includes a double bar line at the end of measure 44.

Tablature basse page 2:

Couplet 2



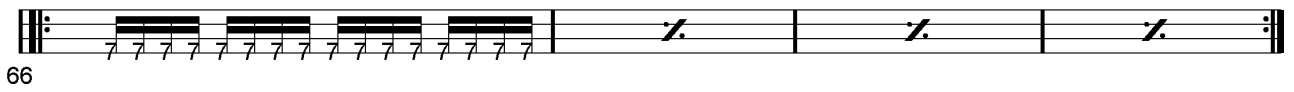
Pré-Refrain 2



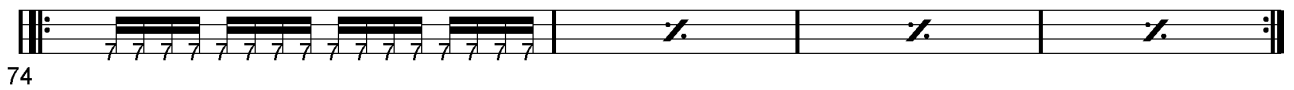
Refrain 2



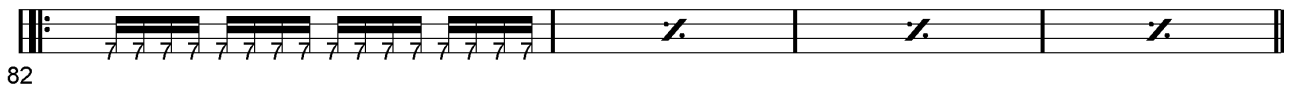
Pont 1



Solo 2



Pont 2



Final



Partition basse page 1:

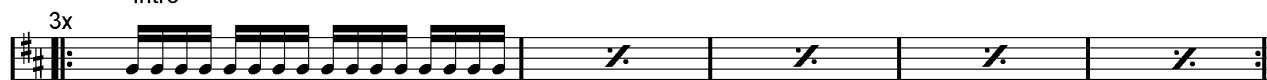
Tesla 2 Late 4 Love

Break

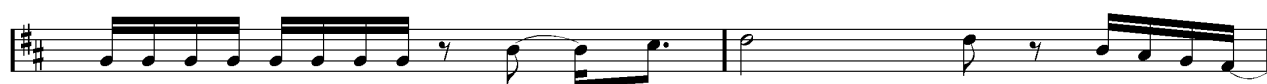


1

Intro



3

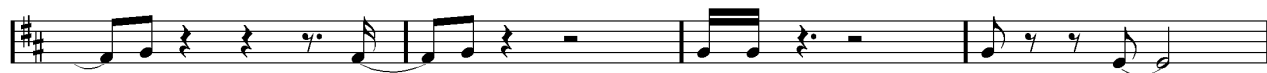


18

Couplet 1



20



24

Pré-Refrain 1



28

Refrain 1



32

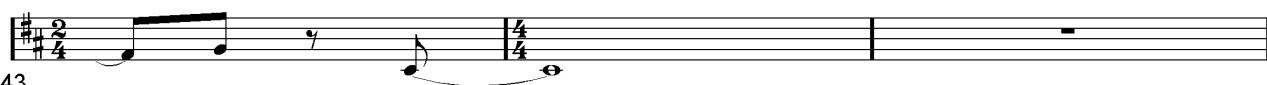


36

Solo 1



40



43

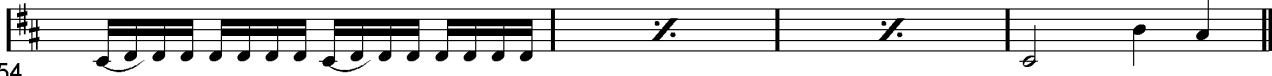
Partition basse page 2:

Couplet 2

46 

50 

Pré-Refrain 2

54 

Refrain 2

58 

62 

Pont 1

66 

Solo 2

74 

Pont 2

82 

Final

90 

glissés

94 

Partition batterie page 1:

Tesla 2 Late 4 Love

♩ = 102

Break

Musical notation for the Break section, measures 1-2. The notation is on a single staff with a 4/4 time signature. It features a series of eighth-note patterns with accents (>) and dynamic markings (x). Measure 1 starts with a downbeat. Measure 2 ends with a double bar line and a repeat sign.

Intro

Musical notation for the Intro section, measures 3-4. The notation is on a single staff with a 4/4 time signature. It features a series of eighth-note patterns with accents (>) and dynamic markings (x). Measure 3 starts with a downbeat. Measure 4 ends with a double bar line and a repeat sign.

Musical notation for the Intro section, measures 5-6. The notation is on a single staff with a 4/4 time signature. It features a series of eighth-note patterns with accents (>) and dynamic markings (x). Measure 5 starts with a downbeat. Measure 6 ends with a double bar line and a repeat sign.

Musical notation for the Intro section, measures 7-10. The notation is on a single staff with a 4/4 time signature. It features a series of eighth-note patterns with accents (>) and dynamic markings (x). Measure 7 starts with a downbeat. Measure 10 ends with a double bar line and a repeat sign.

Musical notation for the Intro section, measures 11-13. The notation is on a single staff with a 4/4 time signature. It features a series of eighth-note patterns with accents (>) and dynamic markings (x). Measure 11 starts with a downbeat. Measure 13 ends with a double bar line and a repeat sign.

Musical notation for the Intro section, measures 14-16. The notation is on a single staff with a 4/4 time signature. It features a series of eighth-note patterns with accents (>) and dynamic markings (x). Measure 14 starts with a downbeat. Measure 16 ends with a double bar line and a repeat sign.

Couplet 1

Musical notation for the Couplet 1 section, measures 17-19. The notation is on a single staff with a 4/4 time signature. It features a series of eighth-note patterns with accents (>) and dynamic markings (x). Measure 17 starts with a downbeat. Measure 19 ends with a double bar line and a repeat sign.

Musical notation for the Couplet 1 section, measures 20-23. The notation is on a single staff with a 4/4 time signature. It features a series of eighth-note patterns with accents (>) and dynamic markings (x). Measure 20 starts with a downbeat. Measure 23 ends with a double bar line and a repeat sign.

Partition batterie page 2:

Pré-Refrain 1

28

Refrain 1

32

36

Solo 1

40

43

Partition batterie page 3:

Couplet 2

46

50

Pré-Refrain 2

54

Refrain 2

58

62

Pont 1

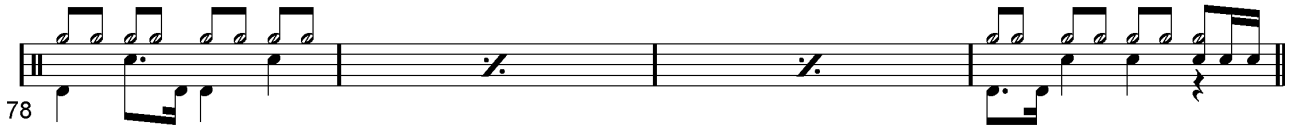
66

70

Solo 2

74

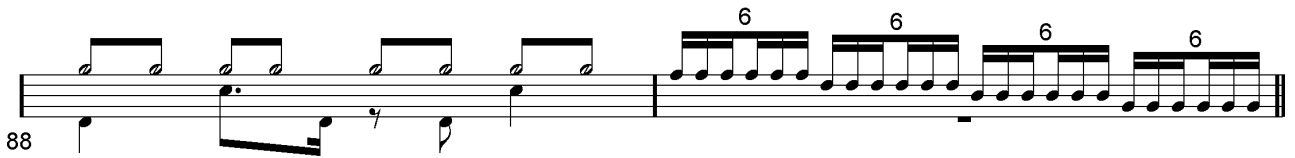
Partition batterie page 4:

78 

Pont 2

82 

85 

88 

Final

90 

94 

Écriture batterie:

The image displays six horizontal staves of musical notation, each representing a different category of drum sounds. Each staff contains four distinct symbols corresponding to the labels above them. The symbols are: a quarter note with a stem, a quarter note with a stem and an 'x' above it, a quarter note with a stem and an 'x' above it, and a quarter note with a stem and an 'x' above it. The second staff uses a quarter note with a stem and an 'x' above it, a quarter note with a stem and an 'x' above it, a quarter note with a stem and an 'x' above it, and a quarter note with a stem and an 'x' above it. The third staff uses a quarter note with a stem, a quarter note with a stem, a quarter note with a stem, and a quarter note with a stem. The fourth staff uses a quarter note with a stem and an accent (>), a quarter note with a stem and a dot above it, a quarter note with a stem and an 'x' above it, and a quarter note with a stem and an 'x' above it. The fifth staff uses a quarter note with a stem and an 'x' above it, a quarter note with a stem and a diamond above it, a quarter note with a stem and a triangle above it, and a quarter note with a stem and a triangle above it. The sixth staff uses a quarter note with a stem and a cross above it, a quarter note with a stem, a quarter note with a stem and a triangle above it, and a quarter note with a stem and a cross above it.

bd 1	bd 2	rim-shot	sd
HH Pied	HH fermée	HH entrouverte	HH ouverte
tom 1	tom 2	tom 3	tom 4
accent	note mutée	crash	cloche
ride	dôme de cymbale	chinoise	splash
fla	note muette	Claps	Roulé = 2 coups d'1 seule main