

Scorpions The Same Thrill:

Table des matières

Introduction:.....2
Tablature basse page 1:.....3
Tablature basse page 2:.....4
Partition basse page 1:.....5
Partition basse page 2:.....6
Partition batterie page 1:.....7
Partition batterie page 2:.....8
Partition batterie page 3:.....9
Écriture batterie:.....10

Introduction:

Toute la difficulté de ce morceau est le tempo qui est très rapide (240 à la noire) donc pas facile pour les débutants.

À la basse y a des syncopes et des contretemps qui ne sont pas évidents à placer toujours à cause du tempo.

Notez également que l'intro est en ternaire (triolet de croches) mais que le reste du morceau est en binaire.

Pour la batterie la grosse difficulté c'est le tempo mais surtout le mélange binaire / ternaire qui n'est vraiment pas facile.

Il y a également un travail d'accentuation sur la dernière ligne de la page 2 qui n'est pas évident à placer.

J'ai écrit la partition de batterie avec 4 toms et 2 grosses caisses mais les batteurs les plus expérimentés devraient pouvoir adapter la partition pour 3 toms et une grosse caisse !

Voici le lien pour écouter le morceau:

[Scorpions the same thrill](#)

Bon courage à tous !

Tablature basse page 1:
Scorpions The Same Thrill

Intro 1

Intro 1 guitar tablature. It starts with a 4/4 time signature. The first line shows a power chord on the 8th fret. The second line shows a sequence of eighth notes on the 9th fret, grouped in fours, with an 8x (eight frets) bar above the first group. The piece ends with a double bar line.

Intro 2

Intro 2 guitar tablature. It starts with a 5th fret power chord, followed by a descending eighth-note scale (5, 3, 5, 3). This is followed by a 6x (six frets) bar, then another ascending eighth-note scale (5, 3, 5, 3). The piece ends with a double bar line.

Couplet 1

Couplet 1 guitar tablature. It consists of a sequence of eighth notes: 0, 7, 0, 7, 0, 7, 0, 0, 0, 7, 0, 0, 7, 0, 0, 7, 0, 0, 7, 0.

Couplet 1 guitar tablature (continued). It consists of a sequence of eighth notes: 0, 7, 0, 7, 0, 7, 0, 0, 0, 7, 0, 0, 7, 0, 0, 7, 0, 0, 7, 0.

Gimmick

Gimmick guitar tablature. It starts with a 5th fret power chord, followed by a descending eighth-note scale (5, 3, 5, 3). This is followed by a 6x (six frets) bar, then another ascending eighth-note scale (5, 3, 5, 3). The piece ends with a double bar line.

Couplet 2

Couplet 2 guitar tablature. It consists of a sequence of eighth notes: 0, 7, 0, 7, 0, 7, 0, 0, 0, 7, 0, 0, 7, 0, 0, 7, 0, 0, 7, 0.

Couplet 2 guitar tablature (continued). It consists of a sequence of eighth notes: 0, 7, 0, 7, 0, 7, 0, 0, 0, 7, 0, 0, 7, 0, 0, 7, 0, 0, 7, 0.

Refrain 1

Refrain 1 guitar tablature. It starts with a 5th fret power chord, followed by a descending eighth-note scale (5, 3, 5, 3). This is followed by a 6x (six frets) bar, then another ascending eighth-note scale (5, 3, 5, 3). The piece ends with a double bar line.

Refrain 1 guitar tablature (continued). It starts with a 5th fret power chord, followed by a descending eighth-note scale (5, 3, 5, 3). There is a slash in the middle of the line, followed by an ascending eighth-note scale (5, 3, 5, 3). The piece ends with a double bar line.

Couplet 3

Couplet 3 guitar tablature. It consists of a sequence of eighth notes: 0, 0, 0, 0, 0, 0, 0, 0, 0, 0, 0, 0, 0, 0, 0, 0, 0, 0, 0, 0.

Couplet 3 guitar tablature (continued). It consists of a sequence of eighth notes: 0, 0, 0, 0, 0, 0, 0, 0, 0, 0, 0, 0, 0, 0, 0, 0, 0, 0, 0, 0.

Refrain 2

Refrain 2 guitar tablature. It starts with a 5th fret power chord, followed by a descending eighth-note scale (5, 3, 5, 3). This is followed by a 6x (six frets) bar, then another ascending eighth-note scale (5, 3, 5, 3). The piece ends with a double bar line.

Refrain 2 guitar tablature (continued). It starts with a 5th fret power chord, followed by a descending eighth-note scale (5, 3, 5, 3). There is a slash in the middle of the line, followed by an ascending eighth-note scale (5, 3, 5, 3). The piece ends with a double bar line.

Tablature basse page 2:

Pont 1

89

93

97

101

Pont 2

103

107

Solo

111

124

Couplet 3

127

131

Refrain 3

135

161

164

193

Partition basse page 1:
Scorpions The Same Thrill

Intro 1

1 8 9 3 3 3 3

Intro 2

17 24

Couplet 1

25

29

Gimmick

33 40

Couplet 2

41

45

Refrain 1

49 50

62

Couplet 3

65

69

Refrain 2

73

86

Partition batterie page 1:
Scorpions The Same Thrill

♩ = 240

Intro 1

tacet 8 mesures sans batterie

1 9

Intro 2

17

Couplet 1

25

29

Gimmick

33

Couplet 2

41

45

Refrain 1

49

62

Partition batterie page 2:

Couplet 3

65

69

Refrain 2

73

86

Pont 1

89

93

97

101

Pont 2

103

107

Partition batterie page 3:

Solo

111

124

Couplet 3

127

131

Refrain 3

135

161

Ralenti sur les 4 dernières mesures

164

Final batterie (tempo = 120)

194

197

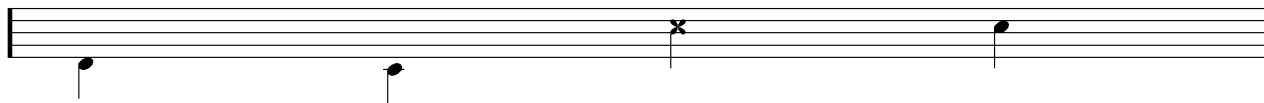
Écriture batterie:

bd 1

bd 2

rim-shot

sd

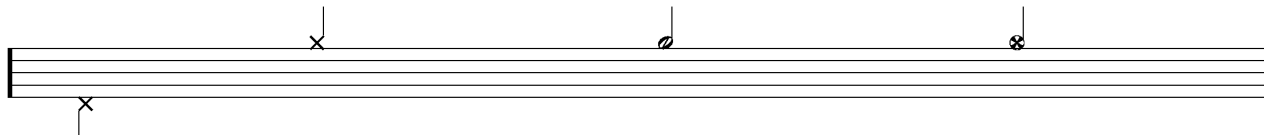


HH Pied

HH fermée

HH entrouverte

HH ouverte

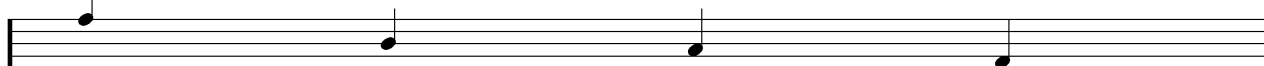


tom 1

tom 2

tom 3

tom 4

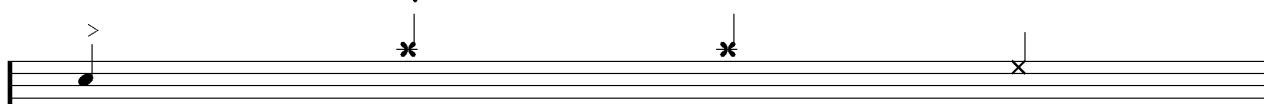


accent

note mutée

crash

cloche

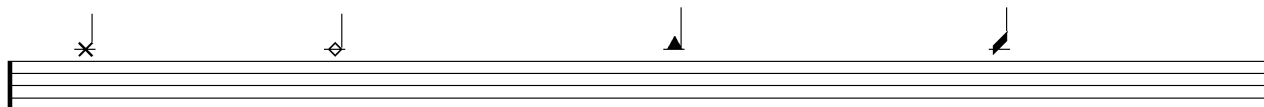


ride

dôme de cymbale

chinoise

splash



flas

note muette

