

Scorpions Crossfire:

Table des matières

Introduction:.....	2
Tablature basse:.....	3
Partition basse:.....	4
Partition batterie page 1:.....	5
Partition batterie page 2:.....	6
Écriture batterie:.....	7

Introduction:

Ce morceau est idéal pour les débutants:

Pour le rythme il n'y a que des rondes et des blanches à jouer sur un tempo lent.

Le signe / sur les notes des mesures 3 et 5 correspondent à un glissé.

Notez que le bassiste joue la fondamentale de chaque accord à l'exception des mesures 3 et 5 où il joue la tierce de chaque accord.

Pour la partition, il y a un seul dièse à la clef: le Fa#.

Pour la batterie c'est plus compliqué (même si on n'utilise que la grosse caisse et la caisse claire dans ce morceau): on est assez proche d'un rythme de fanfare militaire (si vous trouvez une traduction des paroles du morceau vous comprendrez pourquoi) il y a des roulements et des accents sur la caisse claire pas faciles à effectuer.

Voici le lien pour écouter ce morceau:

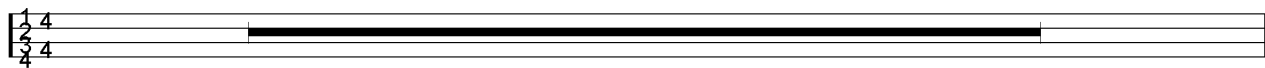
[Scorpions Crossfire](#)

Bon courage à tous !

Tablature basse:

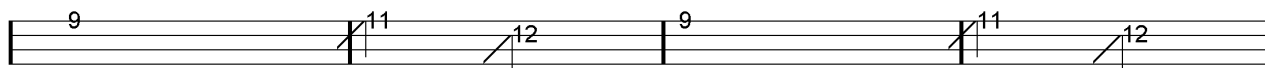
Intro 1

tacet = 8 mesures sans la basse

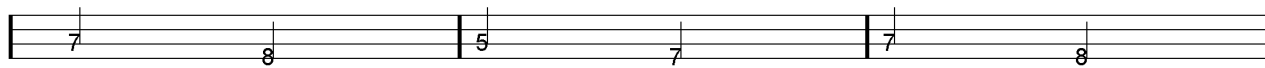


1

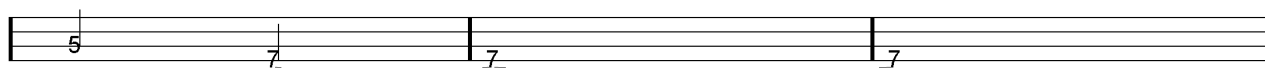
Intro 2



9

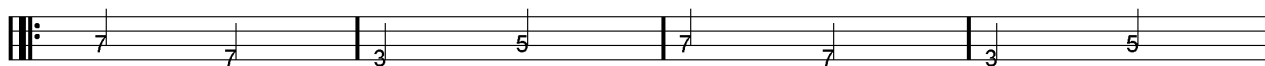


13

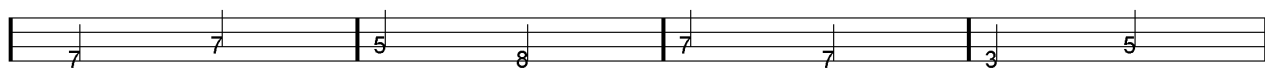


16

Couplets 1 et 2

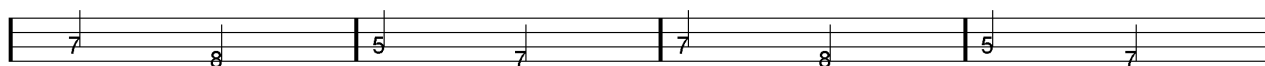


19

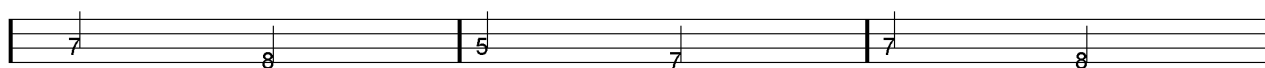


23

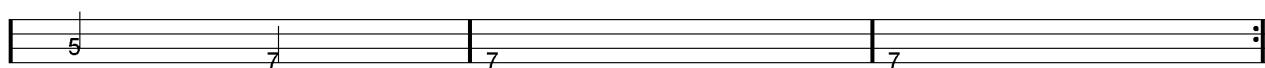
Refrains 1 et 2



27



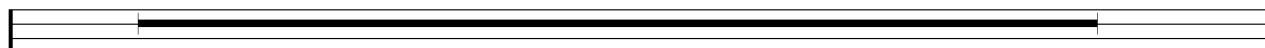
31



34

Pont

tacet = 8 mesures sans la basse



55

Gimmick + Refrain 3 + Chorus + Refrain 4

ad lib

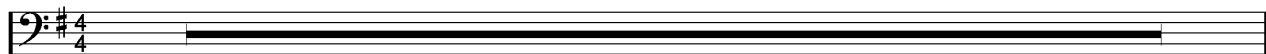


63

Partition basse:

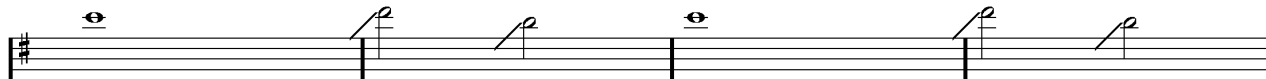
Intro 1

tacet = 8 mesures sans la basse

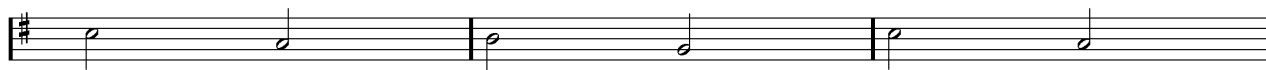


1

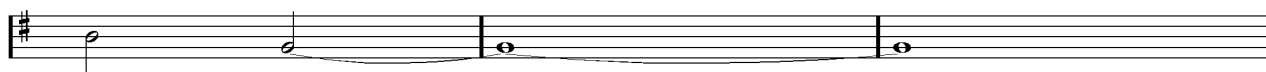
Intro 2



9

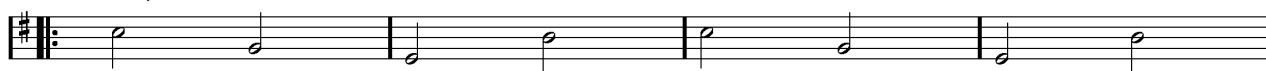


13

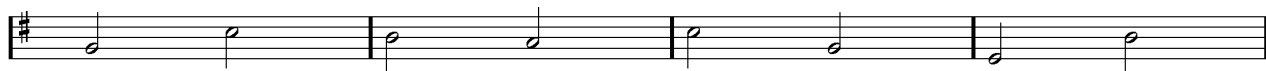


16

Couplets 1 et 2

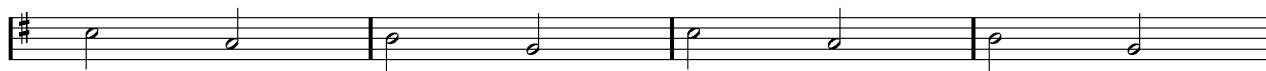


19

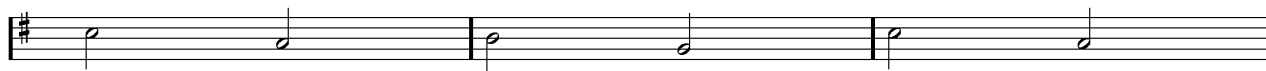


23

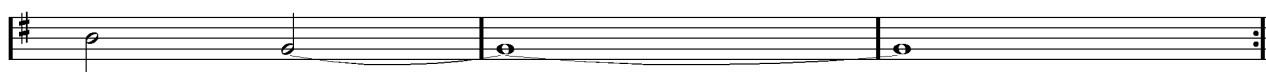
Refrains 1 et 2



27



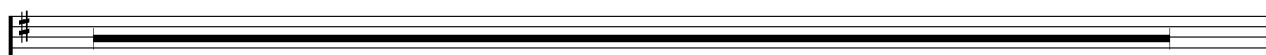
31



34

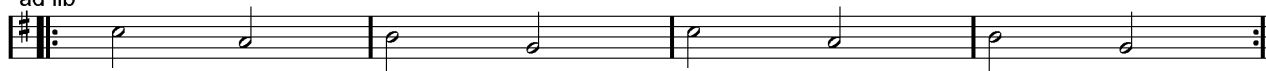
Pont

tacet = 8 mesures sans la basse



55

ad lib Gimmick + Refrain 3 + Chorus + Refrain 4



63

Partition batterie page 1:

♩ = 95

Intro 1

1

3

Intro 2

9

11

13

15

17

Couplets 1 et 2

19

21

23

Partition batterie page 2:

25  Musical notation for measures 25 and 26. The notation is on a single staff with a treble clef and a key signature of one flat. It features a complex rhythmic pattern with eighth and sixteenth notes, including accents and slurs.

Refrains 1 et 2

27  Musical notation for measures 27 and 28, labeled as Refrains 1 and 2. The notation continues the rhythmic pattern from the previous measures.

29  Musical notation for measures 29 and 30.

31  Musical notation for measures 31 and 32.

33  Musical notation for measures 33 and 34.

35  Musical notation for measures 35 and 36.

Pont

55  Musical notation for measures 55 and 56, labeled as Pont. The notation includes a double bar line and repeat signs.

57  Musical notation for measures 57 and 58.

Gimmick + Refrain 3 + Chorus + Refrain 4

ad lib 63  Musical notation for measures 63 and 64, labeled as Gimmick + Refrain 3 + Chorus + Refrain 4. The notation includes a double bar line and repeat signs.

65  Musical notation for measures 65 and 66.

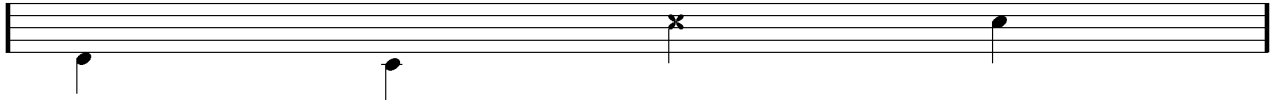
Écriture batterie:

bd 1

bd 2

rim-shot

sd

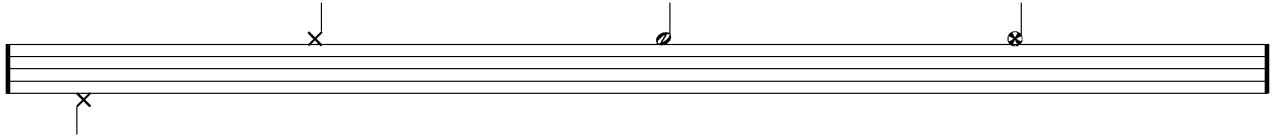


HH Pied

HH fermée

HH entrouverte

HH ouverte

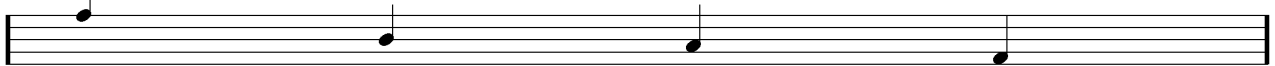


tom 1

tom 2

tom 3

tom 4

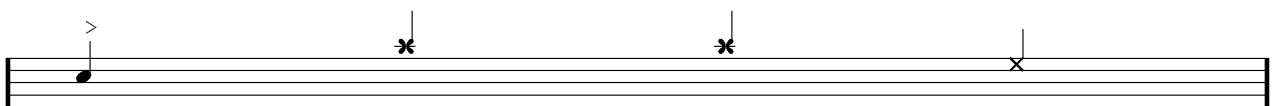


accent

note mutée

crash

cloche

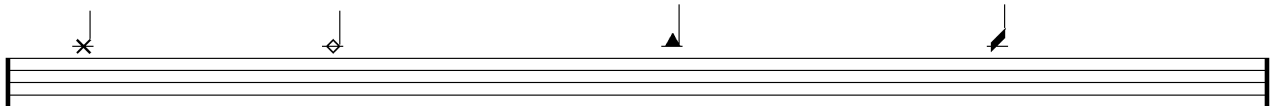


ride

dôme de cymbale

chinoise

splash



flas

note muette

