

Phil Collins Another Day In Paradise:

Table des matières

Introduction:.....	2
Tablature basse page 1:.....	3
Tablature basse page 2:.....	4
Tablature basse page 3:.....	5
Partition basse page 1:.....	6
Partition basse page 2:.....	7
Partition basse page 3:.....	8
Partition batterie page 1:.....	9
Partition batterie page 2:.....	10
Partition batterie page 3:.....	11
Écriture batterie:.....	12

Introduction:

Les difficultés de ligne de basse sont les suivantes: il y a des contretemps, des glissés, des notes muettes, des hammers et des syncopes mais rien d'insurmontable (surtout que le tempo est relativement bas).

Pour la partition il y a 4 bémols à la clef: le Lab, le Sib, le Réb et le Mib.

La partie de batterie est très facile, il y a juste quelques breaks en doubles-croches sur la caisse claire.

Voici le lien pour écouter le morceau:

[phil collins another day in paradise](#)

Bon courage à tous !

Tablature basse page 2:

Couplet 2

3x

47

1.3. | 2.

50

Refrain 2

59

1. | 2.

62

Gimmick 3

67

1. | 2.

70

Pont

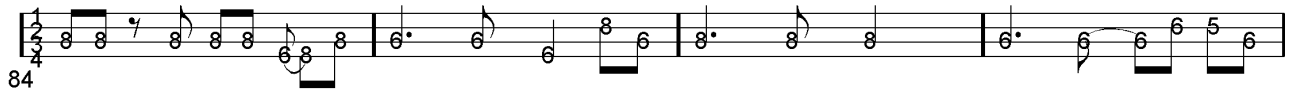
75

78

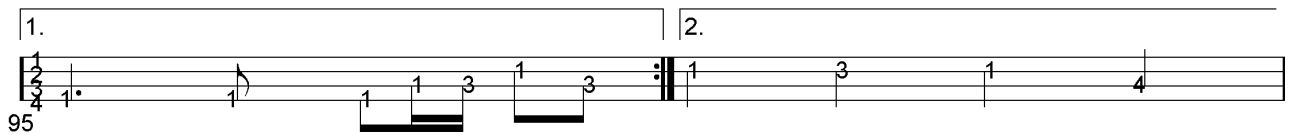
81

Tablature basse page 3:

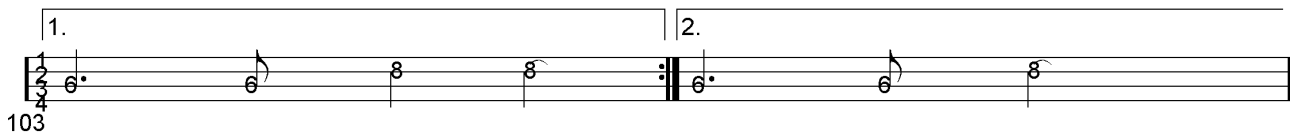
Couplet 3



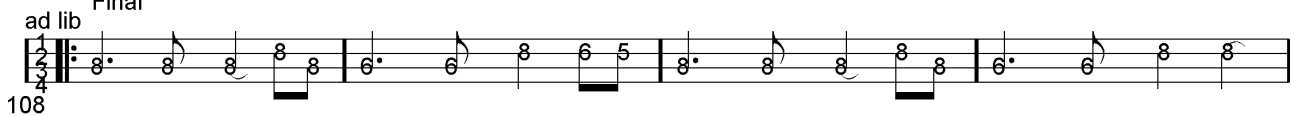
Refrain 3



Gimmick 4



Final



Partition basse page 1:

Phil Collins Another Day In Paradise

Intro

1

4

Gimmick 1

7

Couplet 1

15

18

28

Refrain 1

31

34

Gimmick 2

39

Partition batterie page 1:
Phil Collins Another Day In Paradise

Intro

1

Detailed description: This block contains the first three measures of the 'Intro' section. The music is written on a single staff in 4/4 time. Measure 1 starts with a snare drum hit on the first beat, followed by a bass drum hit on the second beat. Measure 2 has a snare drum hit on the first beat and a bass drum hit on the second beat. Measure 3 consists of two rests, one for the snare and one for the bass drum. The section ends with a double bar line and repeat dots.

4

Detailed description: This block contains measures 4, 5, and 6 of the 'Intro' section. The notation is identical to measures 1-3, with a snare drum hit on the first beat and a bass drum hit on the second beat in measures 4 and 5, and rests in measure 6. The section ends with a double bar line and repeat dots.

Gimmick 1

7

Detailed description: This block contains measures 7, 8, and 9 of the 'Gimmick 1' section. The music is written on a single staff in 4/4 time. Measure 7 has a snare drum hit on the first beat and a bass drum hit on the second beat. Measure 8 has a snare drum hit on the first beat and a bass drum hit on the second beat. Measure 9 consists of two rests, one for the snare and one for the bass drum. The section ends with a double bar line and repeat dots.

Couplet 1

3x

15

Detailed description: This block contains measures 10, 11, 12, 13, and 14 of the 'Couplet 1' section. The music is written on a single staff in 4/4 time. Measures 10-14 feature a repeating pattern of a snare drum hit on the first beat and a bass drum hit on the second beat. The section ends with a double bar line and repeat dots.

1. 3.

2

18

Detailed description: This block contains measures 15, 16, and 17 of the 'Couplet 1' section. Measures 15 and 16 are marked with '1. 3.' and measure 17 is marked with '2'. The notation is identical to the previous measures, with a snare drum hit on the first beat and a bass drum hit on the second beat. The section ends with a double bar line and repeat dots.

28

Detailed description: This block contains measures 18 through 27 of the 'Couplet 1' section. The notation is identical to the previous measures, with a snare drum hit on the first beat and a bass drum hit on the second beat. The section ends with a double bar line and repeat dots.

Refrain 1

31

Detailed description: This block contains measures 28, 29, 30, 31, 32, and 33 of the 'Refrain 1' section. The music is written on a single staff in 4/4 time. Measures 28-33 feature a repeating pattern of a snare drum hit on the first beat and a bass drum hit on the second beat. The section ends with a double bar line and repeat dots.

1.

2.

34

Detailed description: This block contains measures 34, 35, 36, 37, and 38 of the 'Refrain 1' section. Measures 34-35 are marked with '1.' and measures 36-38 are marked with '2.'. The notation is identical to the previous measures, with a snare drum hit on the first beat and a bass drum hit on the second beat. The section ends with a double bar line and repeat dots.

Gimmick 2

39

Detailed description: This block contains measures 39, 40, and 41 of the 'Gimmick 2' section. The music is written on a single staff in 4/4 time. Measure 39 has a snare drum hit on the first beat and a bass drum hit on the second beat. Measure 40 has a snare drum hit on the first beat and a bass drum hit on the second beat. Measure 41 consists of two rests, one for the snare and one for the bass drum. The section ends with a double bar line and repeat dots.

Partition batterie page 3:

Couplet 3

84

88

Refrain 3

92

95

Gimmick 4

100

103

Final

ad lib 108

112

116

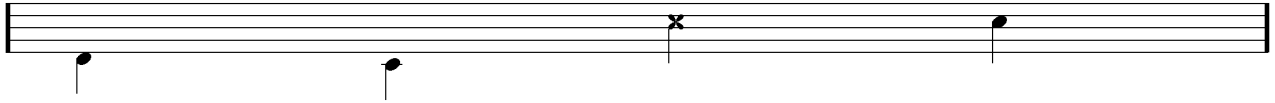
Écriture batterie:

bd 1

bd 2

rim-shot

sd

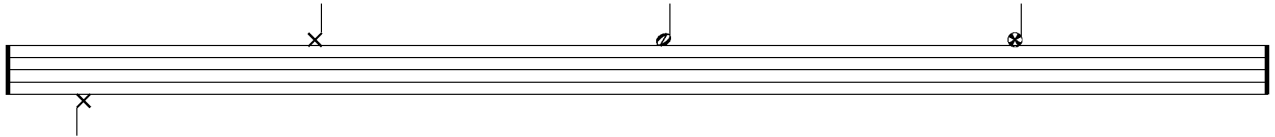


HH Pied

HH fermée

HH entrouverte

HH ouverte

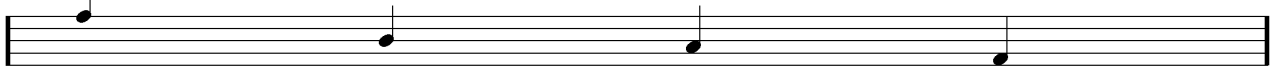


tom 1

tom 2

tom 3

tom 4

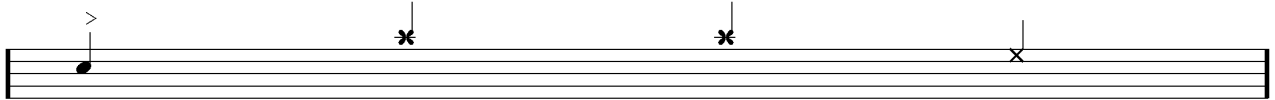


accent

note mutée

crash

cloche

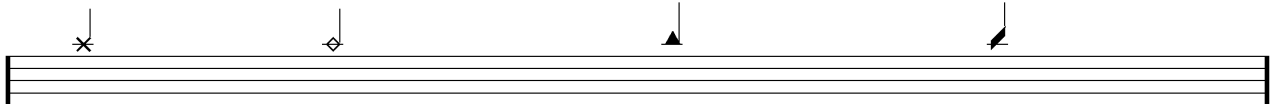


ride

dôme de cymbale

chinoise

splash



flas

note muette

