

Phil Barney Avec Qui Tu Vis:

Table des matières

Introduction:.....2
Tablature basse:.....3
Partition basse:.....4
Partition batterie page 1:.....5
Partition batterie page 2:.....6
Écriture batterie:.....7

Introduction:

Une ligne de basse très répétitive, les seules difficultés de cette ligne de basse ce sont les syncopes et les pull-offs en doubles-croches et le fait de jouer legato sur les groupes de 3 notes (2 doubles-croches + 1 croche) qui sont placées à la fin de l'intro et sur la 2ème mesure des couplets et du solo.

Pour La partition il y a 1 dièse à la clef: le Fa#

La partie de batterie est plus intéressante que la ligne de basse: il y a beaucoup de parties différentes, les seules difficultés ce sont les contretemps à la grosse caisse en doubles-croches et la partie de charley en doubles-croches également à partir du 2ème refrain mais heureusement le tempo est très lent.

Voici le lien pour écouter le morceau:

[Phil Barney Avec Qui Tu Vis](#)

Bon courage à tous !

Tablature basse:

Phil Barney avec qui tu vis

Intro

1

The intro consists of a single staff with a treble clef and a 4/4 time signature. The bass line starts with a 3/4 chord (A4, B4, D4) on the first string. The melody begins with a 0 (open string), followed by a 9 (9th fret), a 7 (7th fret), and a 10 (10th fret). The next measure contains a 7 (7th fret), a 10 (10th fret), and a 9 (9th fret). The final measure has an 8 (8th fret), a 11 (11th fret), a 9 (9th fret), and a 10 (10th fret).

Couplets 1 / 2 / 3

5

The first line of the couplets starts with a 0 (open string), a 3 (3rd fret), and a 3 (3rd fret). The second measure has a 7 (7th fret), a 11 (11th fret), a 9 (9th fret), and a 10 (10th fret). The third measure contains an 8 (8th fret), an 8 (8th fret), and an 8 (8th fret). The fourth measure has a 7 (7th fret), a 7 (7th fret), and a 9 (9th fret). The final measure has a 9 (9th fret) and a 6 (6th fret).

9

The second line of the couplets starts with a 7 (7th fret), a 10 (10th fret), and a 9 (9th fret). The second measure has a 9 (9th fret), an 8 (8th fret), and a 7 (7th fret). The third measure contains a 7 (7th fret), a 10 (10th fret), and a 11 (11th fret). The final measure has a 7 (7th fret), a 9 (9th fret), and a 9 (9th fret).

Refrains 1 / 2 / 3

13

The first line of the refrains starts with a 10 (10th fret), a 9 (9th fret), and a 10 (10th fret). The second measure has a 7 (7th fret), a 10 (10th fret), and a 7 (7th fret). The third measure contains an 8 (8th fret), a 10 (10th fret), and a 7 (7th fret). The final measure has a 10 (10th fret), a 9 (9th fret), a 7 (7th fret), and a 9 (9th fret).

17

The second line of the refrains starts with a 10 (10th fret), a 9 (9th fret), and a 10 (10th fret). The second measure has a 7 (7th fret), a 10 (10th fret), and a 7 (7th fret). The third measure contains an 8 (8th fret), a 10 (10th fret), and a 7 (7th fret). The fourth measure has a 10 (10th fret), a 11 (11th fret), and a 11 (11th fret). The final measure has a 11 (11th fret) and a double bar line with repeat dots.

Solo

56

The solo section starts with a 0 (open string), a 3 (3rd fret), and a 3 (3rd fret). The second measure has a 7 (7th fret), a 11 (11th fret), a 9 (9th fret), and a 10 (10th fret). The third measure contains an 8 (8th fret), an 8 (8th fret), and an 8 (8th fret). The fourth measure has a 7 (7th fret), a 7 (7th fret), and a 9 (9th fret). The final measure has a 9 (9th fret) and a 6 (6th fret).

60

The second line of the solo section starts with a 7 (7th fret), a 10 (10th fret), and a 9 (9th fret). The second measure has a 9 (9th fret), an 8 (8th fret), and a 7 (7th fret). The third measure contains a 7 (7th fret), a 10 (10th fret), and a 11 (11th fret). The final measure has a 7 (7th fret), a 9 (9th fret), and a 9 (9th fret).

ad lib. Refrain 4

64

The first line of the ad lib. refrain starts with a 10 (10th fret), a 9 (9th fret), and a 10 (10th fret). The second measure has a 7 (7th fret), a 10 (10th fret), and a 7 (7th fret). The third measure contains an 8 (8th fret), a 10 (10th fret), and a 7 (7th fret). The final measure has a 10 (10th fret), a 9 (9th fret), a 7 (7th fret), and a 9 (9th fret).

68

The second line of the ad lib. refrain starts with a 10 (10th fret), a 9 (9th fret), and a 10 (10th fret). The second measure has a 7 (7th fret), a 10 (10th fret), and a 7 (7th fret). The third measure contains an 8 (8th fret), a 10 (10th fret), and a 7 (7th fret). The fourth measure has a 10 (10th fret), a 11 (11th fret), and a 11 (11th fret). The final measure has a double bar line with repeat dots.

Partition basse:

Phil Barney avec qui tu vis

Intro

Partition batterie page 2:

Couplet 3

39

43

Refrain 3

47

51

Solo

56

60

Refrain 4

ad lib. 64

68

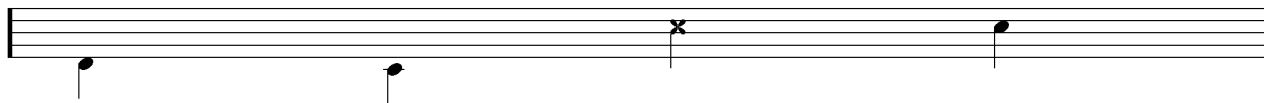
Écriture batterie:

bd 1

bd 2

rim-shot

sd

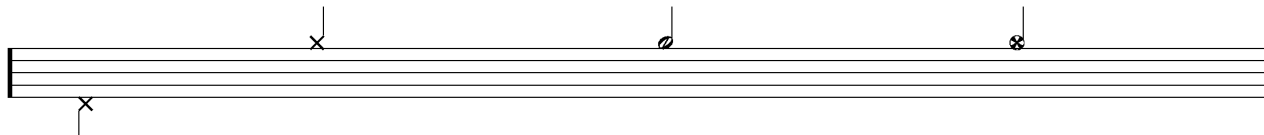


HH Pied

HH fermée

HH entrouverte

HH ouverte

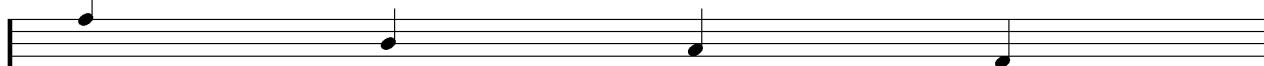


tom 1

tom 2

tom 3

tom 4

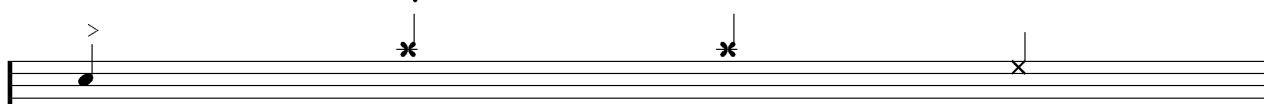


accent

note mutée

crash

cloche

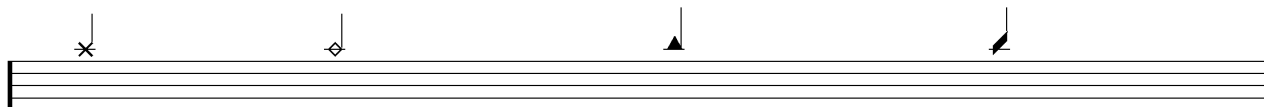


ride

dôme de cymbale

chinoise

splash



flas

note muette

