

Pat Benatar Shadows Of The Night:

Table des matières

Introduction:.....	2
Tablature basse page 1:.....	3
Tablature basse page 2:.....	4
Partition basse page 1:.....	5
Partition basse page 2:.....	6
Partition batterie page 1:.....	7
Partition batterie page 2:.....	8
Partition batterie page 3:.....	9
Écriture batterie:.....	10

Introduction:

Les seules difficultés à signaler pour cette ligne de basse sont les contretemps et les syncopes, il faut également bien exécuter les crescendos en croches avant chaque refrain.

Pour la partition il y a 6 dièses à la clef.

Pour la batterie, les plus grosses difficultés sont les breaks en doubles-croches et le placement des coups de grosse caisse et de la cymbale crash en contretemps, comme pour la basse il faut bien exécuter les crescendos en croches avant chaque refrain.

Voici le lien pour écouter le morceau:

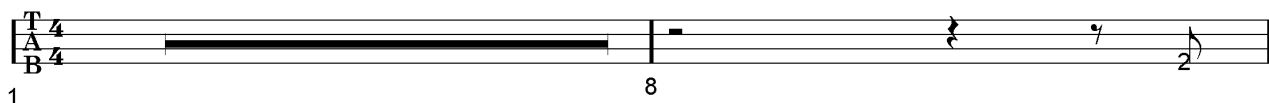
[Pat Benatar Shadows Of The Night](#)

Bon courage à tous !

Tablature basse page 1:

Pat Benatar Shadows Off The Night

Intro 1 = 7 mesures sans la basse



1 8


Intro 1 consists of a single staff with a treble clef and a 4/4 time signature. The first seven measures are completely blank, indicating no bass. The eighth measure contains a whole note G2, followed by a quarter rest, and a quarter note G2 in the final measure.

Intro 2



9

The first line of Intro 2 shows measures 9-12. Measure 9 has a whole note G2. Measure 10 has a dotted half note G2. Measure 11 has a quarter note G2. Measure 12 has a whole note G2.



13

The second line of Intro 2 shows measures 13-16. Measure 13 has a whole note G2. Measure 14 has a dotted half note G2. Measure 15 has a quarter note G2. Measure 16 has a whole note G2.

Couplet 1



17

The first line of Couplet 1 shows measures 17-20. Measure 17 has a whole note G2. Measure 18 has a dotted half note G2. Measure 19 has a quarter note G2. Measure 20 has a whole note G2.



21

The second line of Couplet 1 shows measures 21-24. Measure 21 has a whole note G2. Measure 22 has a dotted half note G2. Measure 23 has a quarter note G2. Measure 24 has a dotted half note G2.

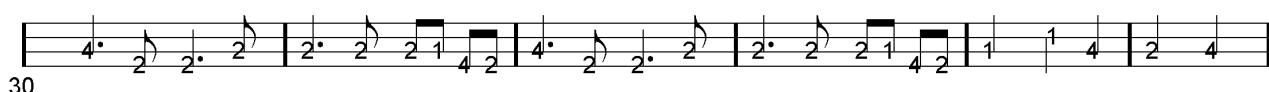
Pré-Refrain 1



25

The first line of Pré-Refrain 1 shows measures 25-32. Measure 25 has a dotted quarter note G2. Measure 26 has a dotted quarter note G2. Measure 27 has a quarter note G2. Measure 28 has a quarter note G2. Measure 29 has a quarter note G2. Measure 30 has a quarter note G2. Measure 31 has a quarter note G2. Measure 32 has a quarter note G2.

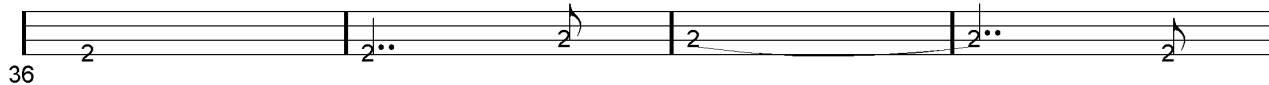
Refrain 1



30

The first line of Refrain 1 shows measures 30-35. Measure 30 has a quarter note G2. Measure 31 has a quarter note G2. Measure 32 has a quarter note G2. Measure 33 has a quarter note G2. Measure 34 has a quarter note G2. Measure 35 has a quarter note G2.

Pont



36

The first line of Pont shows measures 36-39. Measure 36 has a whole note G2. Measure 37 has a dotted half note G2. Measure 38 has a quarter note G2. Measure 39 has a whole note G2.



40

The second line of Pont shows measures 40-43. Measure 40 has a whole note G2. Measure 41 has a dotted half note G2. Measure 42 has a quarter note G2. Measure 43 has a whole note G2.

Couplet 2



44

The first line of Couplet 2 shows measures 44-47. Measure 44 has a quarter note G2. Measure 45 has a quarter note G2. Measure 46 has a quarter note G2. Measure 47 has a quarter note G2.



48

The second line of Couplet 2 shows measures 48-51. Measure 48 has a quarter note G2. Measure 49 has a quarter note G2. Measure 50 has a quarter note G2. Measure 51 has a quarter note G2.

Tablature basse page 2:

Pré-Refrain 2

52

52

Refrain 2

57

57

60

60

Solo Guitare

63

63

67

67

Pré-Refrain 3

71

71

Refrain 3

76

76

79

79

83

83

Final ad lib.

87

87

91

91

Partition basse page 1:
Pat Benatar Shadows Off The Night

Intro 1 = 7 mesures sans la basse

1 8

Intro 2

9

13

Couplet 1

17

21

Pré-Refrain 1

25

Refrain 1

30

Pont

36

40

Couplet 2

44

48

Partition basse page 2:

Pré-Refrain 2

52

Refrain 2

57

60

Solo Guitare

63

67

Pré-Refrain 3

71

Refrain 3

76

79

83

Final ad lib.

87

91

Partition batterie page 1:

Pat Benatar Shadows Off The Night

Intro 1 = 7 mesures sans batterie

1 8

Intro 2 + Couplet 1

9

21

Pré-Refrain 1

25

Refrain 1

30

33

Pont

36

40

Partition batterie page 2:

Couplet 2

44

Musical notation for Couplet 2, measures 44-47. The top staff shows a drum pattern with asterisks indicating hits. The bottom staff shows a bass line with quarter notes and eighth notes. A double bar line with repeat dots is at the end of measure 47.

48

Musical notation for Couplet 2, measures 48-51. Similar to the previous system, it shows a drum pattern and a bass line. A double bar line with repeat dots is at the end of measure 51.

Pré-Refrain 2

52

Musical notation for Pré-Refrain 2, measures 52-56. The drum pattern continues. The bass line features a more complex rhythmic pattern with eighth notes and a crescendo hairpin starting in measure 55. The system ends with a double bar line.

Refrain 2

57

Musical notation for Refrain 2, measures 57-60. The drum pattern is consistent. The bass line has a steady quarter-note pattern. The system ends with a double bar line.

60

Musical notation for Refrain 2, measures 61-65. Continuation of the Refrain 2 pattern. The system ends with a double bar line.

Solo Guitare

63

Musical notation for Solo Guitare, measures 63-66. The drum pattern is sparse, with many rests. The bass line has a steady quarter-note pattern. The system ends with a double bar line.

67

Musical notation for Solo Guitare, measures 67-70. Continuation of the Solo Guitare pattern. The system ends with a double bar line.

Pré-Refrain 3

71

Musical notation for Pré-Refrain 3, measures 71-75. The drum pattern is sparse. The bass line has a steady quarter-note pattern. A crescendo hairpin starts in measure 74. The system ends with a double bar line.

Partition batterie page 3:

Refrain 3

76

79

82

Final

ad lib. 87

91

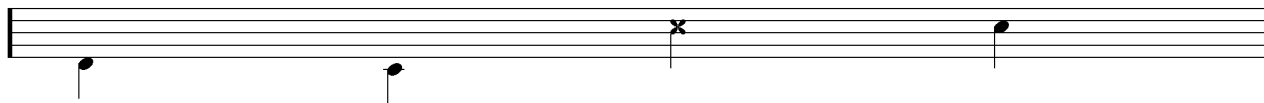
Écriture batterie:

bd 1

bd 2

rim-shot

sd

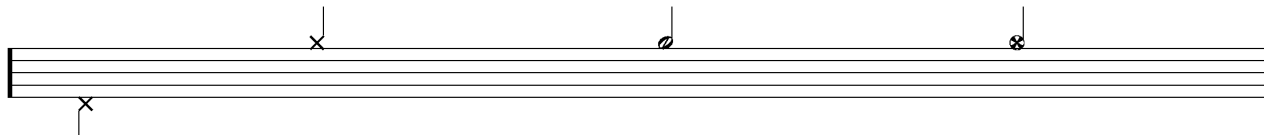


HH Pied

HH fermée

HH entrouverte

HH ouverte

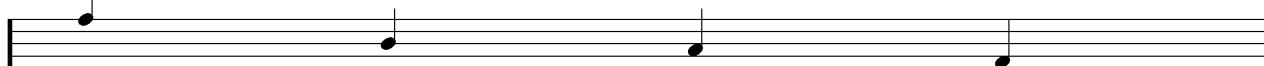


tom 1

tom 2

tom 3

tom 4

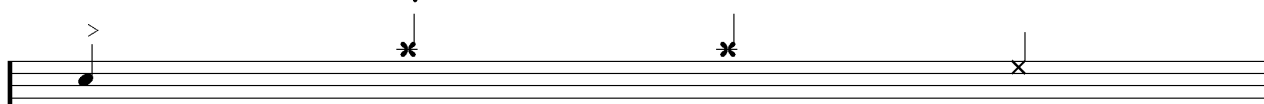


accent

note mutée

crash

cloche

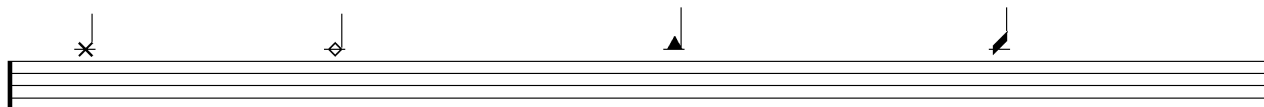


ride

dôme de cymbale

chinoise

splash



flas

note muette

