

**Nirvana Come As You Are:**

**Table des matières**

Introduction:.....2  
Tablature basse page 1:.....3  
Tablature basse page 2:.....4  
Partition basse page 1:.....5  
Partition basse page 2:.....6  
Partition batterie page 1:.....7  
Partition batterie page 2:.....8  
Écriture batterie:.....9

### **Introduction:**

Les seules difficultés de cette ligne de basse sont les contretemps et les syncopes. Il n'y a pas d'effets de jeux dans cette partie de basse mais J'ai pris la liberté de descendre les deux dernières croches qui précèdent chaque refrain d'une octave ce qui permet de repasser par la grosse corde à vide pour faciliter les déplacements sur le manche entre les couplets et les refrains.

Pour la partition de basse il y a deux dièses à la clef: le Fa# et le Do#.

La partie de batterie est assez difficile, les grosses difficultés sont les contretemps en doubles-croches à la grosse caisse, le placement rythmique de la caisse claire sur la 2ème ligne des couplets, les flas et les breaks en doubles-croches le tout sur un tempo relativement rapide.

Voici le lien pour écouter le morceau:

[Nirvana Come As You Are](#)

Bon courage à tous !

**Tablature basse page 1:**

Nirvana Come As You Are

Intro guitare

1 2

Tablature for the guitar intro, measures 1 and 2. Measure 1 contains a whole rest. Measure 2 contains a quarter note on the 7th fret of the 6th string, followed by eighth notes on the 7th and 8th frets of the 6th string.

Intro

6

Tablature for the main intro, measures 6 to 8. Measure 6: quarter notes on 9th fret (6th string), 7th fret (5th string), 9th fret (4th string), 9th fret (3rd string), 8th fret (2nd string). Measure 7: quarter notes on 7th fret (6th string), 9th fret (5th string), 7th fret (4th string), 7th fret (3rd string), 9th fret (2nd string), 7th fret (1st string). Measure 8: quarter notes on 7th fret (6th string), 9th fret (5th string), 7th fret (4th string), 7th fret (3rd string), 9th fret (2nd string), 7th fret (1st string). Ends with a double bar line.

Couplet 1

10

Tablature for the first couplet, measures 10 to 12. Measure 10: quarter notes on 9th fret (6th string), 7th fret (5th string), 9th fret (4th string), 9th fret (3rd string), 8th fret (2nd string). Measure 11: quarter notes on 7th fret (6th string), 9th fret (5th string), 7th fret (4th string), 7th fret (3rd string), 9th fret (2nd string), 7th fret (1st string). Measure 12: quarter notes on 7th fret (6th string), 9th fret (5th string), 7th fret (4th string), 7th fret (3rd string), 9th fret (2nd string), 7th fret (1st string). Ends with a double bar line.

14

Tablature for the first couplet, measures 14 to 16. Measure 14: quarter notes on 9th fret (6th string), 7th fret (5th string), 9th fret (4th string), 9th fret (3rd string), 8th fret (2nd string). Measure 15: quarter notes on 7th fret (6th string), 9th fret (5th string), 7th fret (4th string), 7th fret (3rd string), 9th fret (2nd string), 7th fret (1st string). Measure 16: quarter notes on 7th fret (6th string), 9th fret (5th string), 7th fret (4th string), 7th fret (3rd string), 9th fret (2nd string), 7th fret (1st string). Ends with a double bar line.

Couplets 2 / 3

18

Tablature for couplets 2 and 3, measures 18 to 20. Measure 18: quarter notes on 9th fret (6th string), 7th fret (5th string), 9th fret (4th string), 9th fret (3rd string), 8th fret (2nd string). Measure 19: quarter notes on 7th fret (6th string), 9th fret (5th string), 7th fret (4th string), 7th fret (3rd string), 9th fret (2nd string), 7th fret (1st string). Measure 20: quarter notes on 7th fret (6th string), 9th fret (5th string), 7th fret (4th string), 7th fret (3rd string), 9th fret (2nd string), 7th fret (1st string). Ends with a double bar line.

22

Tablature for couplets 2 and 3, measures 22 to 24. Measure 22: quarter notes on 9th fret (6th string), 7th fret (5th string), 9th fret (4th string), 9th fret (3rd string), 8th fret (2nd string). Measure 23: quarter notes on 7th fret (6th string), 9th fret (5th string), 7th fret (4th string), 7th fret (3rd string), 9th fret (2nd string), 7th fret (1st string). Measure 24: quarter notes on 9th fret (6th string), 7th fret (5th string), 9th fret (4th string), 9th fret (3rd string), 8th fret (2nd string), 7th fret (1st string), 9th fret (2nd string), 9th fret (3rd string), 9th fret (4th string), 0 (5th string), 1 (4th string).

Refrains 1 / 2

26

Tablature for the first two refrains, measures 26 to 29. Measure 26: eighth notes on 2nd fret (6th string), 2nd fret (5th string), 2nd fret (4th string), 2nd fret (3rd string), 2nd fret (2nd string), 2nd fret (1st string). Measure 27: eighth notes on 5th fret (6th string), 5th fret (5th string), 5th fret (4th string), 5th fret (3rd string), 5th fret (2nd string), 5th fret (1st string), 0 (5th string). Measure 28: eighth notes on 2nd fret (6th string), 2nd fret (5th string), 2nd fret (4th string), 2nd fret (3rd string), 2nd fret (2nd string), 2nd fret (1st string). Measure 29: eighth notes on 5th fret (6th string), 5th fret (5th string), 5th fret (4th string), 5th fret (3rd string), 5th fret (2nd string), 5th fret (1st string), 3 (5th string).

30

Tablature for the first two refrains, measures 30 to 32. Measure 30: eighth notes on 2nd fret (6th string), 2nd fret (5th string), 2nd fret (4th string), 2nd fret (3rd string), 2nd fret (2nd string), 2nd fret (1st string). Measure 31: eighth notes on 5th fret (6th string), 5th fret (5th string), 5th fret (4th string), 5th fret (3rd string), 5th fret (2nd string), 5th fret (1st string), 0 (5th string). Measure 32: eighth notes on 2nd fret (6th string), 2nd fret (5th string), 2nd fret (4th string), 2nd fret (3rd string), 2nd fret (2nd string), 2nd fret (1st string), 5th fret (6th string), 5th fret (5th string), 5th fret (4th string), 5th fret (3rd string), 5th fret (2nd string), 5th fret (1st string), 7th fret (6th string), 9th fret (5th string). Ends with a double bar line.

49

Tablature for the first two refrains, measures 49 to 51. Measure 49: eighth notes on 5th fret (6th string), 5th fret (5th string), 5th fret (4th string), 5th fret (3rd string), 5th fret (2nd string), 5th fret (1st string), 0 (5th string). Measure 50: eighth notes on 5th fret (6th string), 5th fret (5th string), 5th fret (4th string), 5th fret (3rd string), 5th fret (2nd string), 5th fret (1st string), 0 (5th string). Measure 51: eighth notes on 5th fret (6th string), 5th fret (5th string), 5th fret (4th string), 5th fret (3rd string), 5th fret (2nd string), 5th fret (1st string), 0 (5th string). Ends with a double bar line.

Pont 1

50

Tablature for the bridge, measures 50 to 51. Measure 50: quarter notes on 7th fret (6th string), 7th fret (5th string), 7th fret (4th string), 7th fret (3rd string), 7th fret (2nd string), 7th fret (1st string), 9th fret (6th string), 5th fret (5th string), 5th fret (4th string), 5th fret (3rd string), 5th fret (2nd string), 8th fret (1st string), 5th fret (6th string). Measure 51: quarter notes on 5th fret (6th string), 5th fret (5th string), 5th fret (4th string), 5th fret (3rd string), 5th fret (2nd string), 8th fret (1st string), 5th fret (6th string). Ends with a double bar line.

**Tablature basse page 2:**

T  
A  
B 7 7 7 7 7 7 7 9 | 5 5 5 5 5 5 8 | 7 7 7 7 7 7 7 9 | 5 5 5 5 5 7 7 8

54

Instrumental

T  
A  
B 9 7 9 7 9 9 8 | 7 9 7 7 7 9 7 8 | 9 7 9 7 9 9 8 | 7 9 7 7 7 9 7 8

58

Solo guitare

T  
A  
B 3x 9 7 9 7 9 9 8 | 7 9 7 7 7 9 7 8 | 9 7 9 7 9 9 8 | 7 9 7 7 7 9 7 9 :

62

T  
A  
B 9 7 9 7 9 9 8 | 7 9 7 7 7 9 7 8 | 9 7 9 7 9 9 8 | 7 9 7 7 7 9 0 0

74

Refrain 3

T  
A  
B 2 2 2 2 2 2 2 2 | 5 5 5 5 5 5 5 0 | 2 2 2 2 2 2 2 2 | 5 5 5 5 5 5 3

78

T  
A  
B 2 2 2 2 2 2 2 2 | 5 5 5 5 5 5 5 0 | 2 2 2 2 2 2 2 2 | 5 5 5 5 5 5 7 7

82

Pont 2

T  
A  
B 7 7 7 7 7 7 7 9 | 5 5 5 5 5 5 8 5 | //

86

T  
A  
B 7 7 7 7 7 7 7 9 | 5 5 5 5 5 5 8 5 | //

90

T  
A  
B 7 7 7 7 7 7 7 9 | 5 5 5 5 5 5 8 5 | 7 7 7 7 7 7 7 7 | 5 5 5 5 5 7 7 8

94

Final

T  
A  
B 9 7 9 7 9 9 8 | 7 9 7 7 7 9 7 8 | //

98

Fin

T  
A  
B 9 7 9 7 9 9 8 | 7 9 7 7 7 9 7 8 | // 9

102

106

**Partition basse page 1:**

**Nirvana Come As You Are**

Intro guitare

Musical notation for measures 1 and 2. Measure 1 contains a whole rest. Measure 2 contains a quarter rest followed by a quarter note G4, a quarter note A4, and a quarter note B4. The key signature has two sharps (F# and C#) and the time signature is 4/4.

Intro

Musical notation for measures 6 and 7. Measure 6 contains quarter notes G4, A4, B4, G4, F#4, E4, D4. Measure 7 contains quarter notes C4, B3, A3, G3, F#3, E3, D3. The piece ends with a double bar line and repeat sign.

Couplet 1

Musical notation for measures 10 and 11. Measure 10 contains quarter notes G4, A4, B4, G4, F#4, E4, D4. Measure 11 contains quarter notes C4, B3, A3, G3, F#3, E3, D3. The piece ends with a double bar line and repeat sign.

Musical notation for measures 14 and 15. Measure 14 contains quarter notes G4, A4, B4, G4, F#4, E4, D4. Measure 15 contains quarter notes C4, B3, A3, G3, F#3, E3, D3. The piece ends with a double bar line and repeat sign.

Couplets 2 / 3

Musical notation for measures 18 and 19. Measure 18 contains quarter notes G4, A4, B4, G4, F#4, E4, D4. Measure 19 contains quarter notes C4, B3, A3, G3, F#3, E3, D3. The piece ends with a double bar line and repeat sign.

Musical notation for measures 22 and 23. Measure 22 contains quarter notes G4, A4, B4, G4, F#4, E4, D4. Measure 23 contains quarter notes C4, B3, A3, G3, F#3, E3, D3. The piece ends with a double bar line and repeat sign.

Refrains 1 / 2

Musical notation for measures 26 and 27. Measure 26 contains eighth notes G4, A4, B4, G4, F#4, E4, D4, C4. Measure 27 contains eighth notes B3, A3, G3, F#3, E3, D3, C3. The piece ends with a double bar line and repeat sign.

Musical notation for measures 30 and 31. Measure 30 contains eighth notes G4, A4, B4, G4, F#4, E4, D4, C4. Measure 31 contains eighth notes B3, A3, G3, F#3, E3, D3, C3. The piece ends with a double bar line and repeat sign.

Musical notation for measures 49 and 50. Measure 49 contains eighth notes G4, A4, B4, G4, F#4, E4, D4, C4. Measure 50 contains eighth notes B3, A3, G3, F#3, E3, D3, C3. The piece ends with a double bar line and repeat sign.

Pont 1

Musical notation for measures 50 and 51. Measure 50 contains eighth notes G4, A4, B4, G4, F#4, E4, D4, C4. Measure 51 contains eighth notes B3, A3, G3, F#3, E3, D3, C3. The piece ends with a double bar line and repeat sign.

## Partition basse page 2:

54



Instrumental

58



3x Solo guitare

62



74



Refrain 3

78



82



Pont 2

86



90



94



Final

98



102

Fin

106





## Partition batterie page 2:

### Pont 1

50

### Instrumental

58

### Solo guitare

62

74

### Refrain 3

78

82

### Pont 2

86

94

### Final

98

102



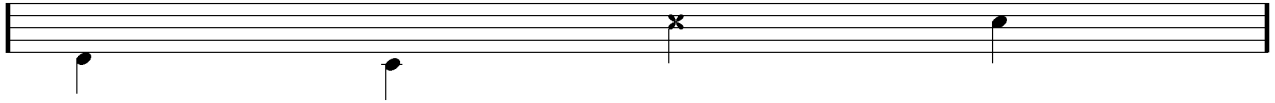
## Écriture batterie:

bd 1

bd 2

rim-shot

sd

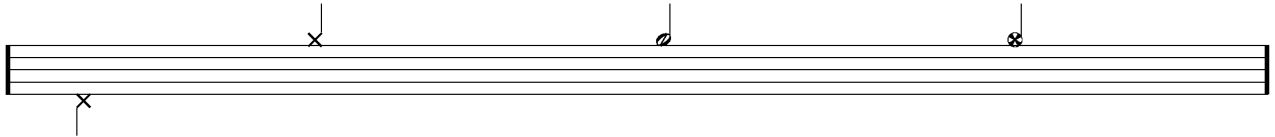


HH Pied

HH fermée

HH entrouverte

HH ouverte

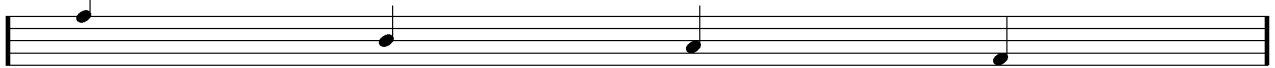


tom 1

tom 2

tom 3

tom 4

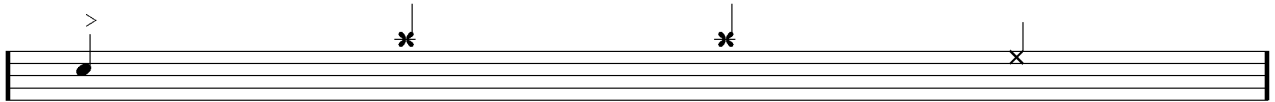


accent

note mutée

crash

cloche

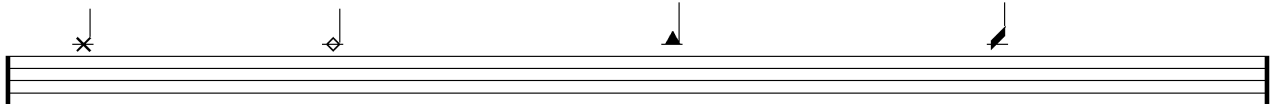


ride

dôme de cymbale

chinoise

splash



flas

note muette

