

Michel Berger quelques mots d'amour:

Table des matières

Introduction:.....	2
Tablature basse page 1:.....	3
Tablature basse page 2:.....	4
Partition basse page 1:.....	5
Partition basse page 2:.....	6
Partition batterie page 1:.....	7
Partition batterie page 2:.....	8
Écriture batterie:.....	9

Introduction:

Les seules difficultés de cette ligne de basse sont les contretemps, les glissés, les notes courtes et les syncopes.

Pour la partition de basse il y a deux bémols à la clef: le Sib et le Mib.

Les seules difficultés de cette partie de batterie sont les contretemps en doubles-croches à la grosse caisse, les flas et les breaks en doubles-croches heureusement le tempo est très lent.

Voici le lien pour écouter le morceau:

[Michel Berger quelques mots d'amour](#)

Bon courage à tous !

Tablature basse page 1:

Michel Berger quelques mots d'amour

Intro

Intro tablature: T 4, A 4, B 4

1

Couplet 1

Couplet 1 line 1: T 6, A 5, B 5

2

Couplet 1 line 2: T 6, A 6, B 6

6

Couplet 1 line 3: T 6, A 6, B 6 with glissé

10

Couplet 2

Couplet 2 line 1: T 6, A 6, B 6

12

Couplet 2 line 2: T 1, A 1, B 1

16

Couplet 2 line 3: T 6, A 6, B 6

20

Refrain 1

Refrain 1 line 1: T 6, A 6, B 6

22

Refrain 1 line 2: T 1, A 1, B 1

26

Tablature basse page 2:

Couplet 3



30



34



38

Refrain 2



40

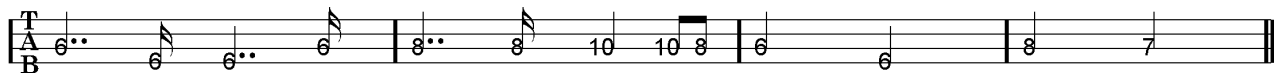


44

Couplet 4



48



52

Final

ralentir.....

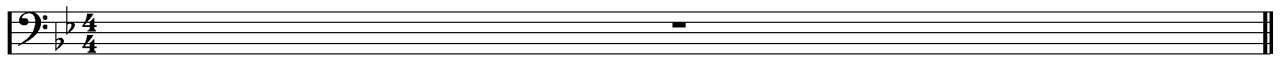


56

Partition basse page 1:

Michel Berger quelques mots d'amour

Intro



1

Couplet 1



2



6



10

Couplet 2



12



16

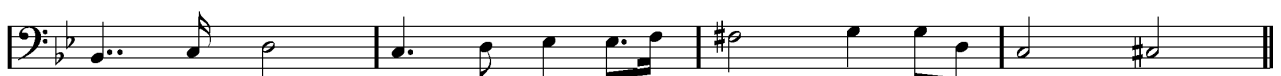


20

Refrain 1



22



26

Partition basse page 2:

Couplet 3

30  Musical notation for measure 30, starting with a bass clef and a key signature of two flats. The measure contains a half note G2, a half note F2, a quarter note E2, a quarter note D2, a quarter note C2, and a quarter note B1.

34  Musical notation for measure 34, starting with a bass clef and a key signature of two flats. The measure contains a half note G2, a half note F2, a quarter note E2, a quarter note D2, a quarter note C2, and a quarter note B1. The word "glissé" is written below the first two notes.

38  Musical notation for measure 38, starting with a bass clef and a key signature of two flats. The measure contains a half note G2, a half note F2, a quarter note E2, a quarter note D2, a quarter note C2, and a quarter note B1.

Refrain 2

40  Musical notation for measure 40, starting with a bass clef and a key signature of two flats. The measure contains a half note G2, a half note F2, a quarter note E2, a quarter note D2, a quarter note C2, and a quarter note B1.

44  Musical notation for measure 44, starting with a bass clef and a key signature of two flats. The measure contains a half note G2, a half note F2, a quarter note E2, a quarter note D2, a quarter note C2, and a quarter note B1.

Couplet 4

48  Musical notation for measure 48, starting with a bass clef and a key signature of two flats. The measure contains a half note G2, a half note F2, a quarter note E2, a quarter note D2, a quarter note C2, and a quarter note B1.

52  Musical notation for measure 52, starting with a bass clef and a key signature of two flats. The measure contains a half note G2, a half note F2, a quarter note E2, a quarter note D2, a quarter note C2, and a quarter note B1.

Final

ralentir.....

56  Musical notation for measure 56, starting with a bass clef and a key signature of two flats. The measure contains a half note G2, a half note F2, a quarter note E2, a quarter note D2, a quarter note C2, and a quarter note B1. The word "Final" is written above the first note, and "ralentir....." is written above the second note. The measure ends with a fermata over the final note.

Partition batterie page 1:

Michel Berger quelques mots d'amour

♩ = 66

Intro

Musical notation for the Intro section, measures 1-1. The notation is on a single staff with a 4/4 time signature. It features a half note on the second line (G4) followed by a quarter rest, and a quarter note on the second line (G4) in the final measure.

1

Couplet 1

Musical notation for Couplet 1, measures 2-5. The notation is on a single staff with a 4/4 time signature. It features a rhythmic pattern of eighth notes with 'x' marks above them, and a bass line of quarter notes. Measure 5 ends with a double bar line.

2

Musical notation for Couplet 1, measures 6-9. The notation is on a single staff with a 4/4 time signature. It features a rhythmic pattern of eighth notes with 'x' marks above them, and a bass line of quarter notes. Measure 9 ends with a double bar line.

6

Musical notation for Couplet 1, measures 10-11. The notation is on a single staff with a 4/4 time signature. It features a rhythmic pattern of eighth notes with 'x' marks above them, and a bass line of quarter notes. Measure 11 ends with a double bar line.

10

Couplet 2

Musical notation for Couplet 2, measures 12-15. The notation is on a single staff with a 4/4 time signature. It features a rhythmic pattern of eighth notes with 'x' marks above them, and a bass line of quarter notes. Measure 15 ends with a double bar line.

12

Musical notation for Couplet 2, measures 16-19. The notation is on a single staff with a 4/4 time signature. It features a rhythmic pattern of eighth notes with 'x' marks above them, and a bass line of quarter notes. Measure 19 ends with a double bar line.

16

Musical notation for Couplet 2, measures 20-21. The notation is on a single staff with a 4/4 time signature. It features a rhythmic pattern of eighth notes with 'x' marks above them, and a bass line of quarter notes. Measure 21 ends with a double bar line.

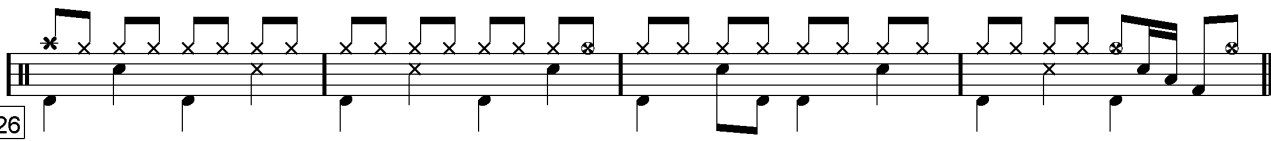
20

Refrain 1

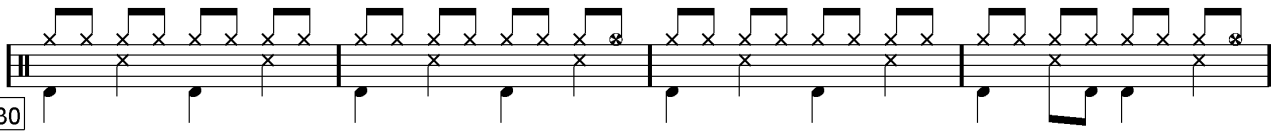
Musical notation for Refrain 1, measures 22-25. The notation is on a single staff with a 4/4 time signature. It features a rhythmic pattern of eighth notes with 'x' marks above them, and a bass line of quarter notes. Measure 25 ends with a double bar line.

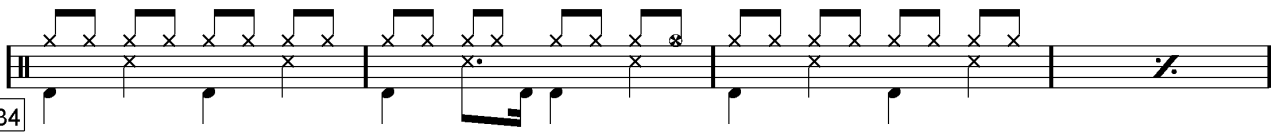
22

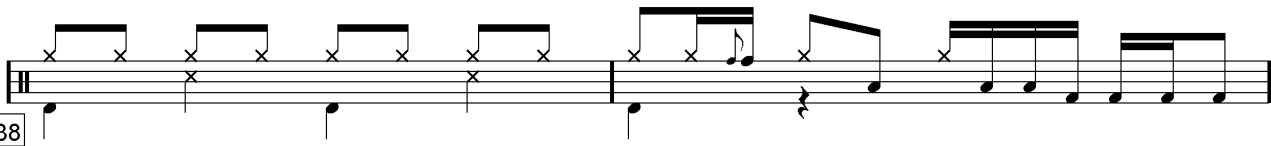
Partition batterie page 2:

26 

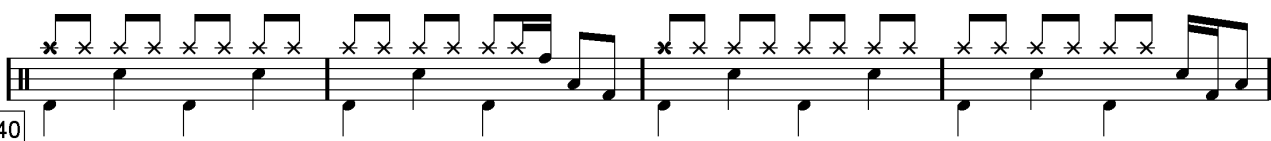
Couplet 3

30 

34 

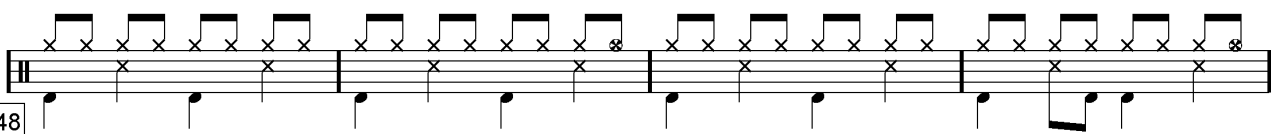
38 

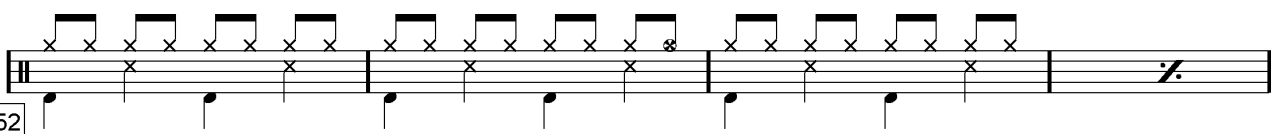
Refrain 2

40 

44 

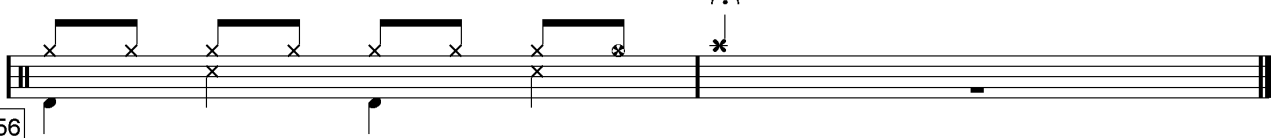
Couplet 4

48 

52 

Final

ralentir.....

56 

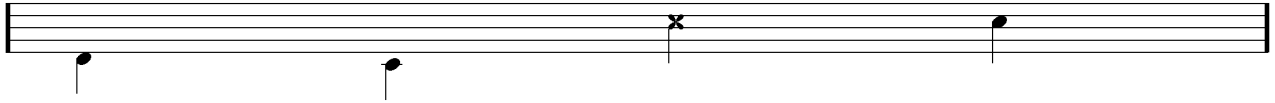
Écriture batterie:

bd 1

bd 2

rim-shot

sd

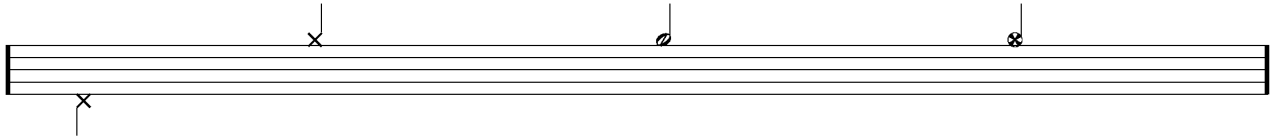


HH Pied

HH fermée

HH entrouverte

HH ouverte

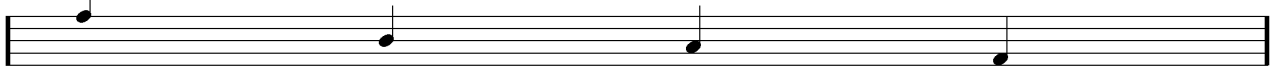


tom 1

tom 2

tom 3

tom 4

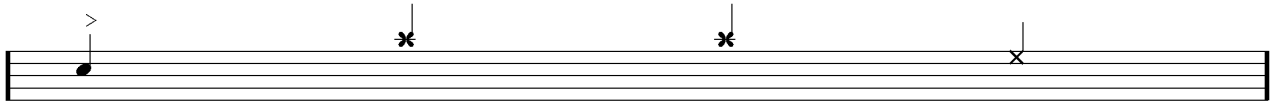


accent

note mutée

crash

cloche

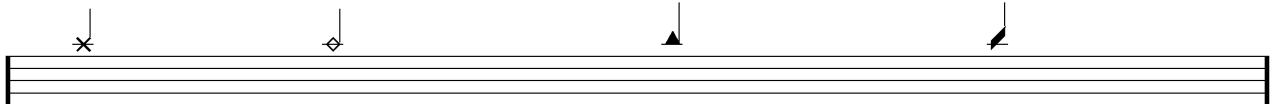


ride

dôme de cymbale

chinoise

splash



flas

note muette

