

Metallica Motorbreath:

Table des matières

Introduction:.....	2
Tablature basse page 1:.....	3
Tablature basse page 2:.....	4
Partition basse page 1:.....	5
Partition basse page 2:.....	6
Partition batterie page 1:.....	7
Partition batterie page 2:.....	8
Partition batterie page 3:.....	9
Partition batterie page 4:.....	10
Écriture batterie:.....	11

Introduction:

Pour les deux instruments: attention aux passages en triolets de noires et aux changements de mesure (une mesure en 5 /4 avant le premier solo et une en 2/4 avant le deuxième solo) !

La ligne de basse est très rapide, les principales difficultés sont les contretemps, les notes courtes (notes avec un point indiqué en dessous) et les syncopes.

Pour la partition il y a deux dièses à la clef: le Fa# et le Do# mais il y a un changement de tonalité pendant les solos de guitare et sur le final où on passe à quatre dièses à la clef.

Comme souvent chez Metallica la partie de batterie est d'un niveau très compliqué vu le tempo du morceau, les plus grosses difficultés sont les contretemps pour la caisse claire, un fla, des breaks en doubles-croches et en sextolets pendant l'intro et les syncopes sur la cymbale crash, pensez à muter la cymbale crash (notes avec un point indiqué au dessus). Notez que pendant l'intro Lars Ulrich se sert de cinq toms mais je me suis limité à quatre pour écrire la partition.

Voici le lien pour écouter le morceau:

[Metallica Motorbreath](#)

Bon courage à tous !

Partition basse page 1:

Metallica Whiplash

♩ = 168

Intro

Musical notation for the Intro section, measures 1-5. Measure 1 starts with a double bar line and a 3-measure rest. Measure 2 contains a triplet of eighth notes. Measure 3 contains a quarter rest followed by a triplet of eighth notes. Measure 4 contains a quarter rest. Measure 5 contains a quarter rest. The key signature is one sharp (F#) and the time signature is 4/4.

Tempo = 160
5x

Musical notation for the first main section, measures 6-9. Measure 6 starts with a double bar line and a 5-measure rest. Measure 7 contains a triplet of eighth notes. Measure 8 contains a quarter rest. Measure 9 contains a quarter rest. The key signature is one sharp (F#) and the time signature is 4/4.

Musical notation for the second main section, measures 26-29. Measure 26 contains a triplet of eighth notes. Measure 27 contains a quarter rest. Measure 28 contains a quarter rest. Measure 29 contains a quarter rest. The key signature is one sharp (F#) and the time signature is 4/4.

Musical notation for the third main section, measures 30-33. Measure 30 contains a triplet of eighth notes. Measure 31 contains a quarter rest. Measure 32 contains a quarter rest. Measure 33 contains a quarter rest. The key signature is one sharp (F#) and the time signature is 4/4.

Musical notation for the fourth main section, measures 38-41. Measure 38 contains a triplet of eighth notes. Measure 39 contains a quarter rest. Measure 40 contains a quarter rest. Measure 41 contains a quarter rest. The key signature is one sharp (F#) and the time signature is 4/4.

3x Couplets 1 / 2 / 3

Musical notation for the first couplet, measures 46-49. Measure 46 contains a triplet of eighth notes. Measure 47 contains a quarter rest. Measure 48 contains a quarter rest. Measure 49 contains a quarter rest. The key signature is one sharp (F#) and the time signature is 4/4.

Musical notation for the second couplet, measures 50-53. Measure 50 contains a triplet of eighth notes. Measure 51 contains a quarter rest. Measure 52 contains a quarter rest. Measure 53 contains a quarter rest. The key signature is one sharp (F#) and the time signature is 4/4.

Refrains 1 / 2 / 3

Musical notation for the first refrain, measures 54-57. Measure 54 contains a triplet of eighth notes. Measure 55 contains a quarter rest. Measure 56 contains a quarter rest. Measure 57 contains a quarter rest. The key signature is one sharp (F#) and the time signature is 4/4.

Musical notation for the second refrain, measures 58-61. Measure 58 contains a triplet of eighth notes. Measure 59 contains a quarter rest. Measure 60 contains a quarter rest. Measure 61 contains a quarter rest. The key signature is one sharp (F#) and the time signature is 4/4.

1.2. Instrumental 1 / 2

Musical notation for the instrumental section, measures 61-64. Measure 61 contains a triplet of eighth notes. Measure 62 contains a quarter rest. Measure 63 contains a quarter rest. Measure 64 contains a quarter rest. The key signature is one sharp (F#) and the time signature is 4/4.

Partition basse page 2:

65

3.
 106

Pont
 109

Solo guitare
 4x
 117

133

135

Couplet 4
 143

Refrain 4
 151

155

Final
 159

161
Fin
 164

Partition batterie page 1:

Metallica Whiplash

♩ = 168

Intro

1 2

Tempo = 160

6

10

14

18

22

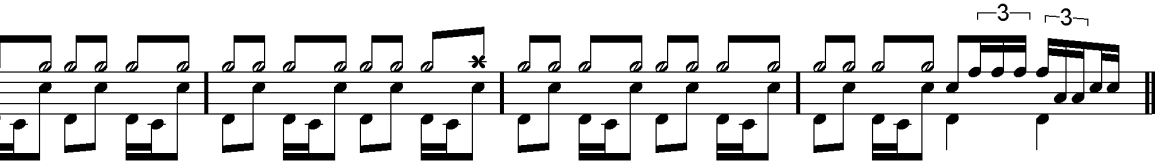
26

30

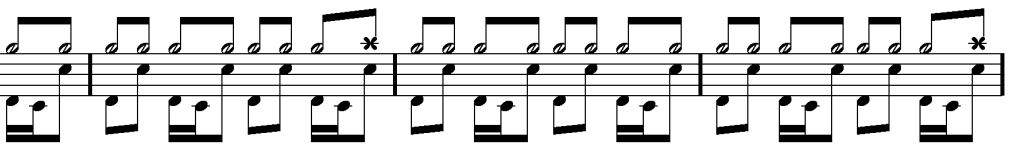
34

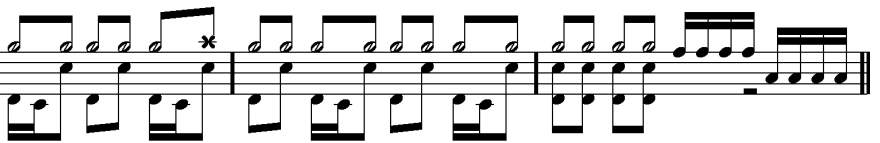
Partition batterie page 2:

38  Musical notation for measures 38-41. The notation consists of two staves: a top staff with a treble clef and a bottom staff with a bass clef. The music features a steady eighth-note pattern in the bass and a more complex eighth-note pattern in the treble, including some accented notes.

42  Musical notation for measures 42-45. Similar to the previous section, it features two staves with eighth-note patterns. Measures 44 and 45 include triplet markings over the treble staff.


Couplet 1

46  Musical notation for measures 46-49. This section continues the eighth-note rhythmic patterns established in the previous measures, with two staves.


50  Musical notation for measures 50-53. Continuation of the eighth-note rhythmic patterns, with two staves.

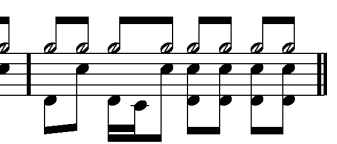
Refrain 1

54  Musical notation for measures 54-57. The top staff features a series of accented eighth notes, while the bottom staff continues with eighth notes. The section ends with a double bar line and repeat sign.

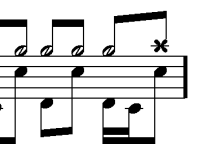
58  Musical notation for measures 58-60. Continuation of the refrain's rhythmic patterns, with two staves.

Instrumental 1


61  Musical notation for measures 61-64. This section introduces a more varied rhythmic pattern, including some dotted notes and rests, with two staves.

65  Musical notation for measures 65-68. Continuation of the instrumental patterns, with two staves.


Couplet 2


69  Musical notation for measures 69-72. Continuation of the eighth-note rhythmic patterns, with two staves.

Partition batterie page 3:


73  Musical notation for measures 73-76, featuring a rhythmic pattern of eighth notes and quarter notes.


Refrain 2


77  Musical notation for measures 77-80, including a section with asterisks above notes.

81  Musical notation for measures 81-83, including a section with asterisks above notes.

Instrumental 2

84  Musical notation for measures 84-87, including a section with asterisks above notes.


88  Musical notation for measures 88-91, featuring a rhythmic pattern of eighth notes and quarter notes.


 Couplets 3 / 4

92  Musical notation for measures 92-95, including a section with asterisks above notes.

96  Musical notation for measures 96-99, featuring a rhythmic pattern of eighth notes and quarter notes.

Refrains 3 / 4

100  Musical notation for measures 100-103, including a section with asterisks above notes.

103  Musical notation for measures 103-106, including a section with asterisks above notes and a circled cross symbol at the end.

Partition batterie page 4:

106

Musical notation for measure 106, featuring a snare drum line with a triplet of eighth notes and a triplet of sixteenth notes.

109

Pont

Musical notation for measure 109, labeled 'Pont', showing a snare drum line with a triplet of eighth notes and a triplet of sixteenth notes.

113

Musical notation for measure 113, showing a snare drum line with a triplet of eighth notes and a triplet of sixteenth notes.

117

Solo guitare

4x

Musical notation for measure 117, labeled 'Solo guitare', showing a snare drum line with a triplet of eighth notes and a triplet of sixteenth notes.

133

Musical notation for measure 133, showing a snare drum line with a triplet of eighth notes and a triplet of sixteenth notes.

135

Musical notation for measure 135, showing a snare drum line with a triplet of eighth notes and a triplet of sixteenth notes.

139

Musical notation for measure 139, showing a snare drum line with a triplet of eighth notes and a triplet of sixteenth notes.

157

Final

Musical notation for measure 157, labeled 'Final', showing a snare drum line with a triplet of eighth notes and a triplet of sixteenth notes.

161

Fin

Musical notation for measure 161, labeled 'Fin', showing a snare drum line with a triplet of eighth notes and a triplet of sixteenth notes.

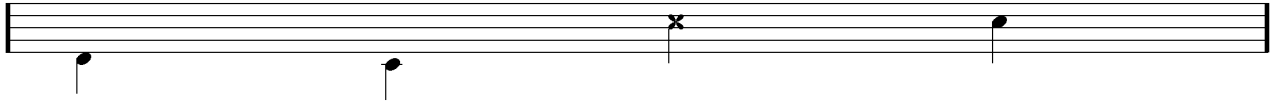
Écriture batterie:

bd 1

bd 2

rim-shot

sd

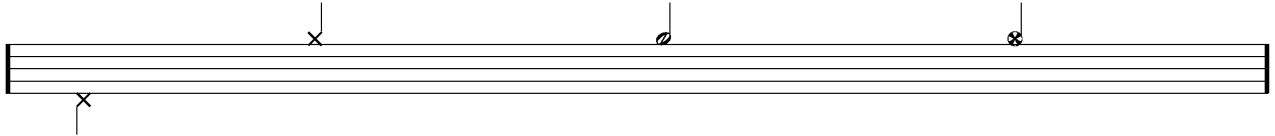


HH Pied

HH fermée

HH entrouverte

HH ouverte

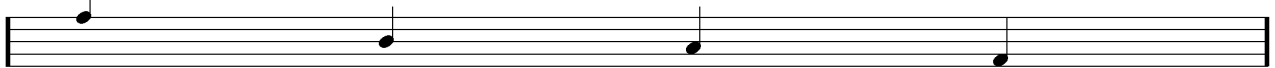


tom 1

tom 2

tom 3

tom 4

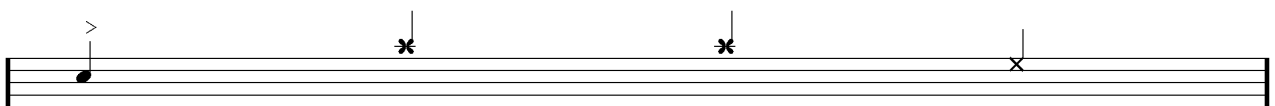


accent

note mutée

crash

cloche

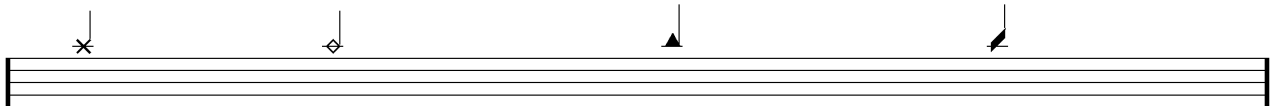


ride

dôme de cymbale

chinoise

splash



flas

note muette

