

Lou Reed Walk On The Wild Side:

Table des matières

Introduction:.....	2
Tablature 1 page 1:.....	3
Tablature 1 page 2:.....	4
Tablature 1 page 3:.....	5
Tablature 2 page 1:.....	6
Tablature 2 page 2:.....	7
Tablature 2 page 3:.....	8
Partition 1 page 1:.....	9
Partition 1 page 2:.....	10
Partition 1 page 3:.....	11
Partition 2 page 1:.....	12
Partition 2 page 2:.....	13
Partition 2 page 3:.....	14
Batterie page 1:.....	15
Batterie page 2:.....	16
Batterie page 3:.....	17
Batterie page 4:.....	18
Écriture batterie:.....	19
Titres disponibles:.....	20
Titres en préparation:.....	20
Conclusion:.....	20

Introduction:

Il y a deux parties de basse (de contrebasse en réalité) sur ce titre, j'ai séparé les deux parties en les nommant 1 et 2

Pour les deux lignes de basse il faut vraiment soigner les glissés (c'est ce qui donne le climat de ce morceau) la partie de basse 1 est la plus simple sauf sur le début du refrain 4, par contre la partie de basse 2 est plus compliquée, elle contient pas mal d'effets de jeux (hammers et glissés) pour les deux lignes il y a beaucoup de contretemps et de syncopes en doubles-croches.

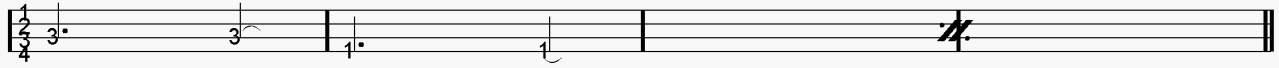
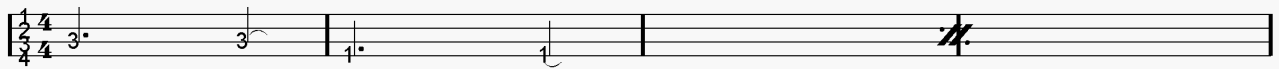
La partie de batterie est interprétée aux balais: première difficulté les notes frottées sur la peau en doubles-croches (écrites à la place de la charley) sont jouées en frisé avec une main et les accents sont joués avec l'autre main, ce n'est qu'à partir de la 2ème ligne de la page 2 que vous pouvez jouer les doubles-croches avec les 2 mains, seconde difficulté il y a un gros travail d'accentuation sur la caisse claire à partir du refrain 2.

[lou reed walk on the wild side](#)

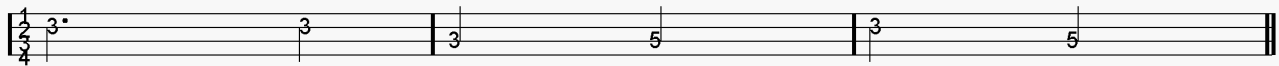
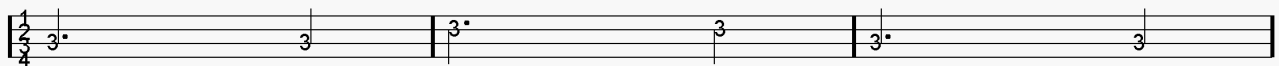
Bon courage à tous !

Tablature 1 page 1:

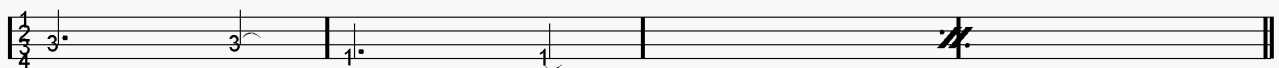
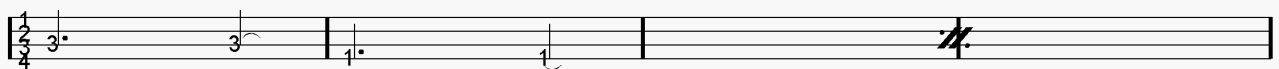
Intro



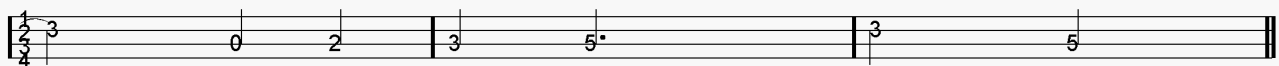
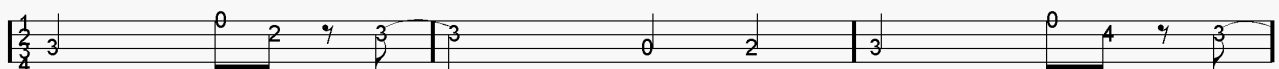
Couplet 1



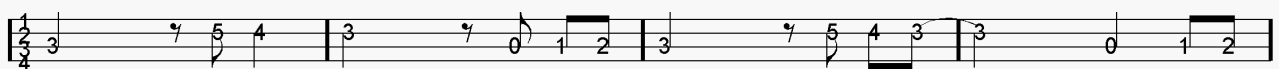
Refrain 1



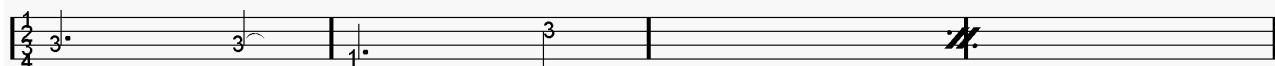
Couplet 2



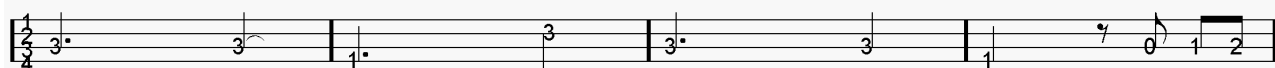
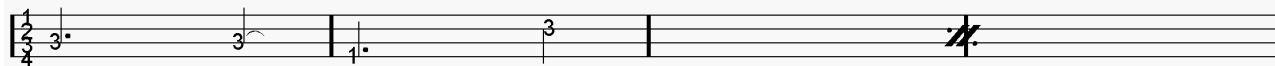
Refrain 2



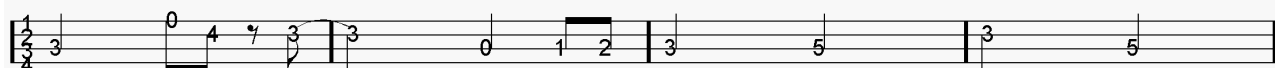
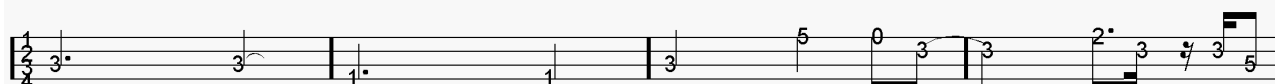
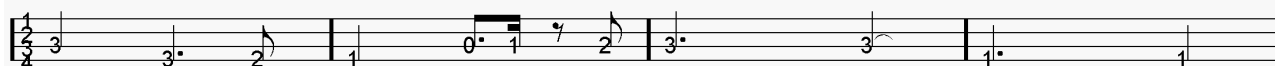
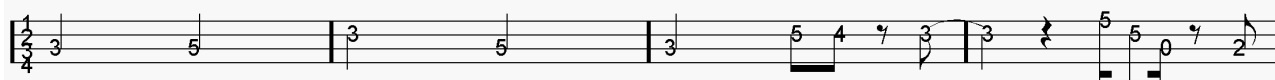
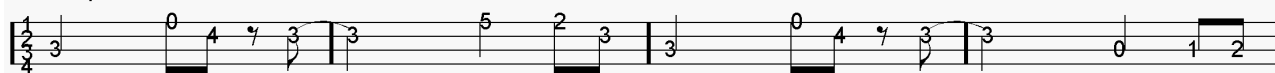
Tablature 1 page 2:



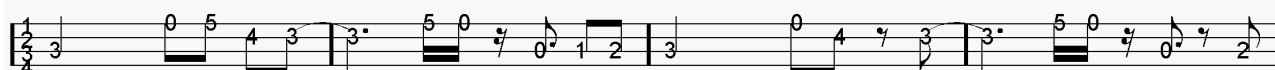
Pont 1



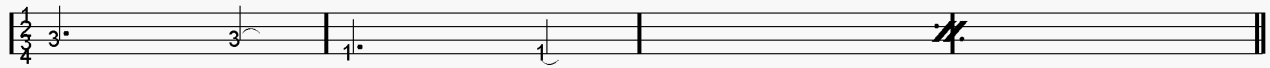
Couplet 3



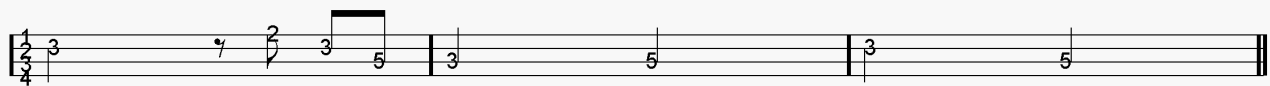
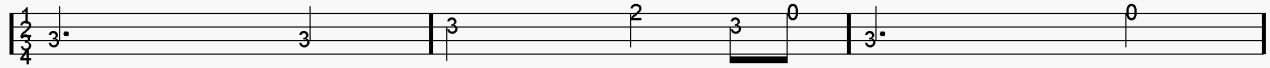
Refrain 3



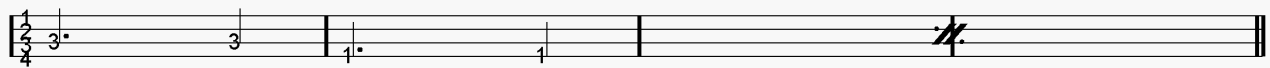
Tablature 1 page 3:



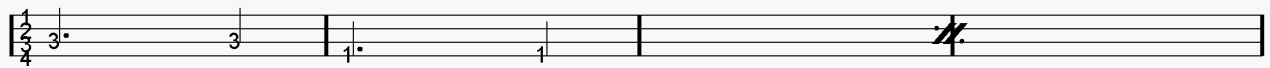
Couplet 4



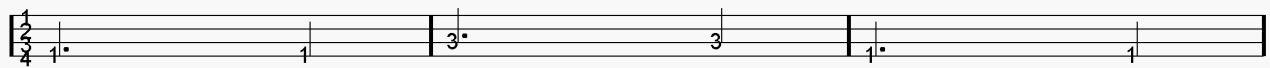
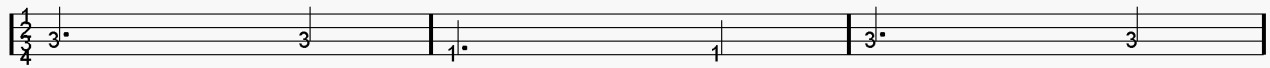
Refrain 4



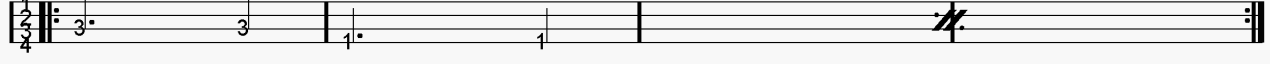
Pont 2



Chorus



ad lib

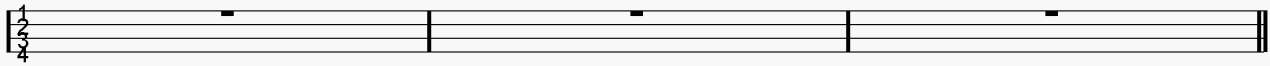
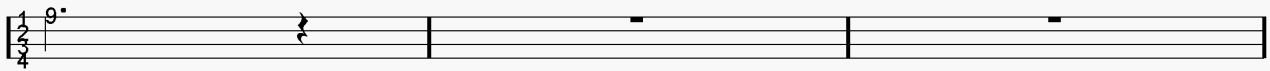


Tablature 2 page 1:

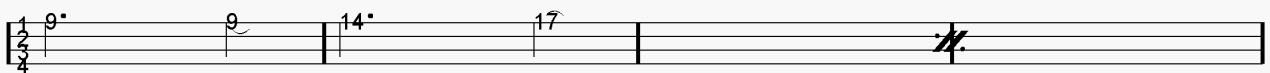
Intro



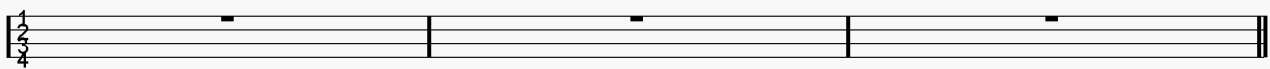
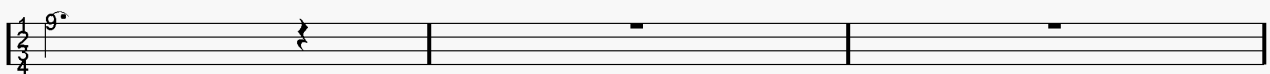
Couplet 1



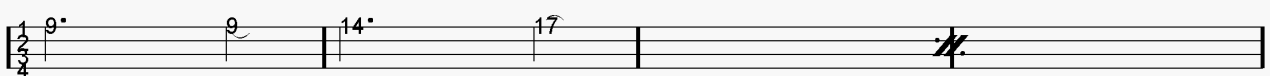
Refrain 1



Couplet 2



Refrain 2



Tablature 2 page 2:

A musical staff in 1/4 time with a 4/4 signature. It contains four measures: the first measure has a quarter note on fret 9, the second has a quarter note on fret 14, the third has a quarter note on fret 17, and the fourth is empty. A double bar line is at the end.

Pont 1

A musical staff in 1/4 time with a 4/4 signature. It contains four measures: the first measure has a quarter note on fret 9, the second has a quarter note on fret 14, the third has a quarter note on fret 17, and the fourth is empty. A double bar line is at the end.

A musical staff in 1/4 time with a 4/4 signature. It contains four measures: the first measure has a quarter note on fret 9, the second has a quarter note on fret 14, the third has a quarter note on fret 17, and the fourth is empty. A double bar line is at the end.

Couplet 3

A musical staff in 1/4 time with a 4/4 signature. It contains four measures: the first measure has a quarter note on fret 9, the second, third, and fourth measures are empty. A double bar line is at the end.

A musical staff in 1/4 time with a 4/4 signature. It contains four measures: the first, second, and third measures are empty, the fourth measure has a quarter note on fret 9. The fifth measure has a quarter note on fret 14, the sixth has a quarter note on fret 17, and the seventh is empty. A double bar line is at the end.

A musical staff in 1/4 time with a 4/4 signature. It contains eight measures: the first measure has a quarter note on fret 9, the second has a quarter note on fret 14, the third has a quarter note on fret 17, the fourth has eighth notes on frets 9 and 8, the fifth has eighth notes on frets 9 and 8, the sixth has eighth notes on frets 12 and 13, the seventh has a quarter note on fret 14, the eighth has a quarter note on fret 13, the ninth has a quarter note on fret 14, and the tenth has a quarter note on fret 17. A double bar line is at the end.

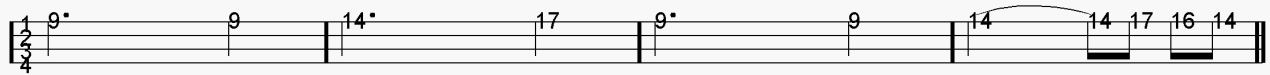
A musical staff in 1/4 time with a 4/4 signature. It contains eight measures: the first measure has a quarter note on fret 14, the second has eighth notes on frets 13 and 14, the third has eighth notes on frets 14 and 12, the fourth has eighth notes on frets 14 and 12, the fifth has a quarter note on fret 14, the sixth has eighth notes on frets 17 and 17, the seventh has eighth notes on frets 16 and 14, the eighth has a quarter note on fret 17, the ninth has a quarter note on fret 14, and the tenth is empty. A double bar line is at the end.

A musical staff in 1/4 time with a 4/4 signature. It contains four empty measures. A double bar line is at the end.

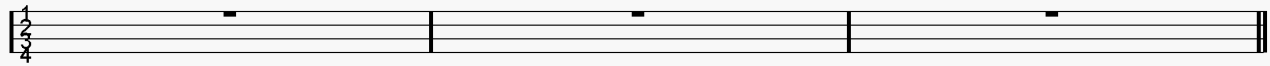
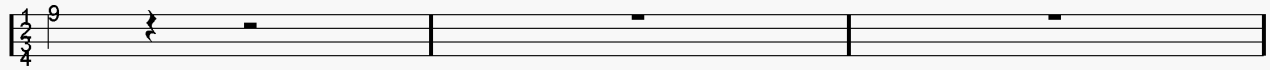
Refrain 3

A musical staff in 1/4 time with a 4/4 signature. It contains four measures: the first measure has a quarter note on fret 9, the second has a quarter note on fret 14, the third has a quarter note on fret 17, and the fourth is empty. A double bar line is at the end.

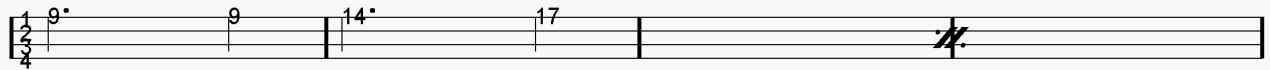
Tablature 2 page 3:



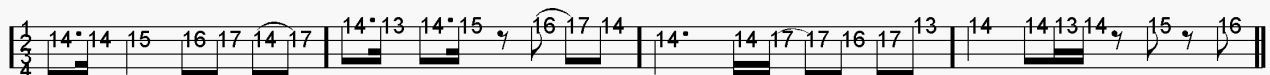
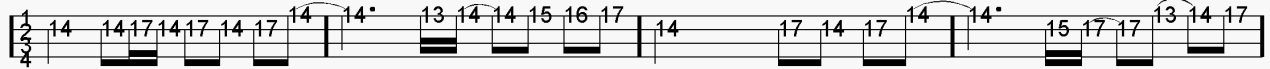
Couplet 4



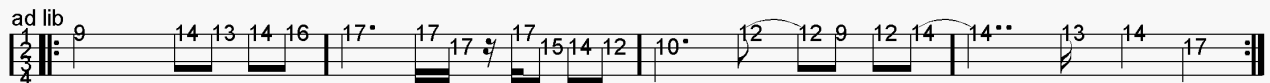
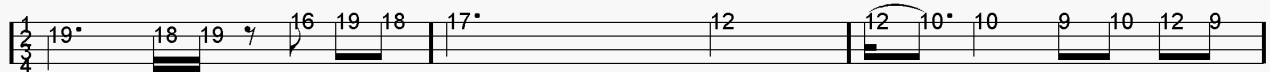
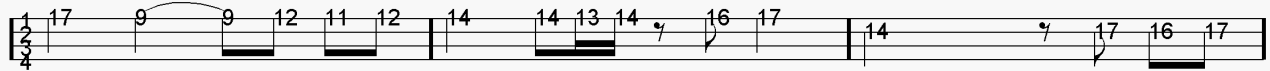
Refrain 4



Pont 2



Chorus



Partition 1 page 1:

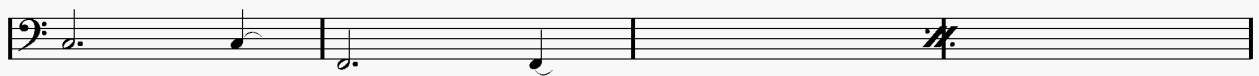
Intro



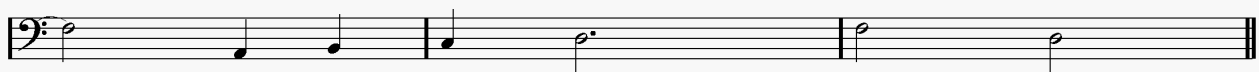
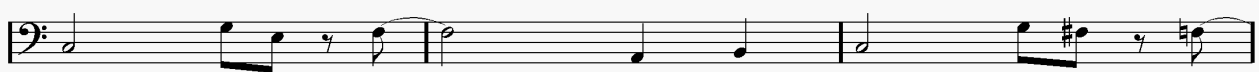
Couplet 1



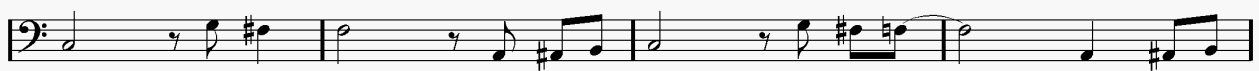
Refrain 1



Couplet 2



Refrain 2



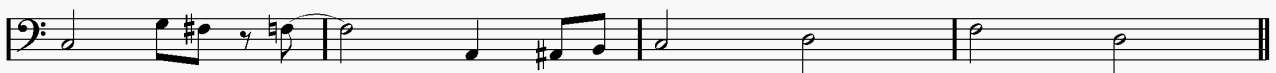
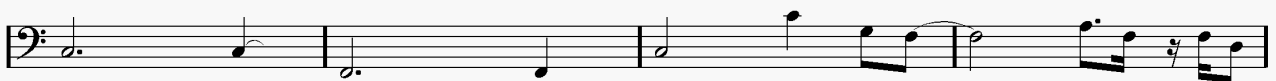
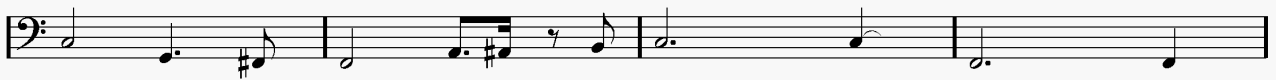
Partition 1 page 2:



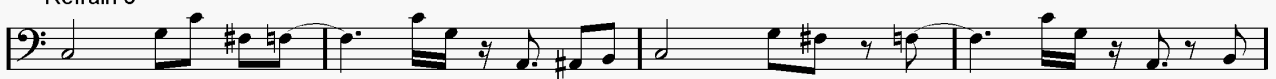
Pont 1



Couplet 3



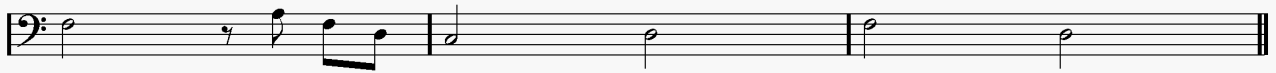
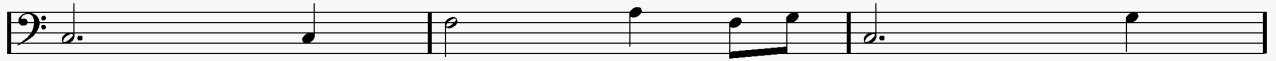
Refrain 3



Partition 1 page 3:



Couplet 4



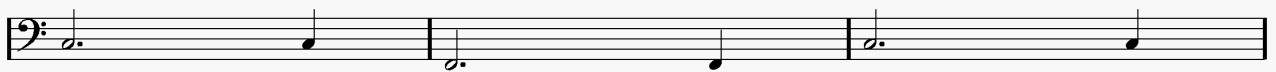
Refrain 4



Pont 2



Chorus



ad lib

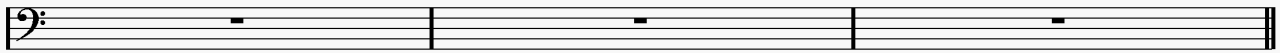
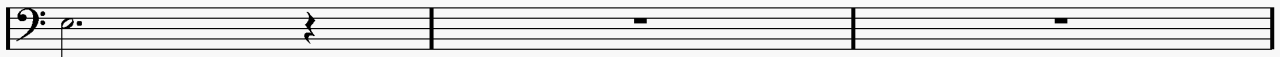


Partition 2 page 1:

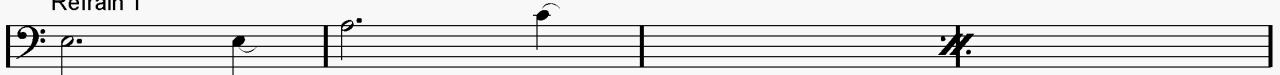
Intro



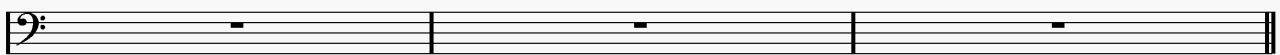
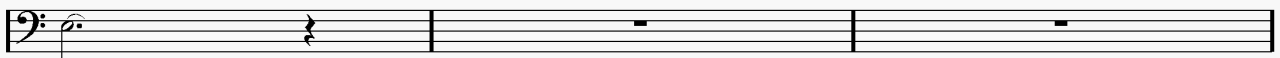
Couplet 1



Refrain 1



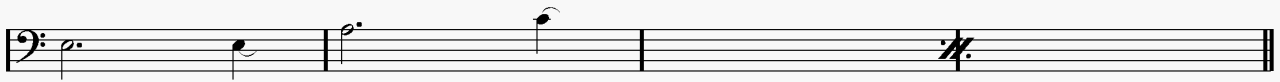
Couplet 2



Refrain 2



Partition 2 page 2:



Pont 1



Couplet 3



Refrain 3



Partition 2 page 3:

Couplet 4

Two staves of musical notation. The first staff begins with a bass clef and contains a whole rest followed by two measures of whole rests. The second staff contains three measures of whole rests.

Refrain 4

Two staves of musical notation. The first staff starts with a bass clef and contains a half note G2, a half note A2, and a double bar line with a repeat sign. The second staff contains a half note G2, a half note A2, a quarter note G2, a quarter note F2, a quarter note E2, a quarter note D2, a quarter note C2, a quarter note B1, a quarter note A1, a quarter note G1, a quarter note F1, a quarter note E1, a quarter note D1, a quarter note C1, a quarter note B0, and a quarter note A0.

Pont 2

Two staves of musical notation. The first staff contains a half note G2, a half note A2, a quarter note G2, a quarter note F2, a quarter note E2, a quarter note D2, a quarter note C2, a quarter note B1, a quarter note A1, a quarter note G1, a quarter note F1, a quarter note E1, a quarter note D1, a quarter note C1, a quarter note B0, and a quarter note A0. The second staff contains a half note G2, a half note A2, a quarter note G2, a quarter note F2, a quarter note E2, a quarter note D2, a quarter note C2, a quarter note B1, a quarter note A1, a quarter note G1, a quarter note F1, a quarter note E1, a quarter note D1, a quarter note C1, a quarter note B0, and a quarter note A0.

Chorus

Two staves of musical notation. The first staff contains a half note G2, a half note A2, a quarter note G2, a quarter note F2, a quarter note E2, a quarter note D2, a quarter note C2, a quarter note B1, a quarter note A1, a quarter note G1, a quarter note F1, a quarter note E1, a quarter note D1, a quarter note C1, a quarter note B0, and a quarter note A0. The second staff contains a half note G2, a half note A2, a quarter note G2, a quarter note F2, a quarter note E2, a quarter note D2, a quarter note C2, a quarter note B1, a quarter note A1, a quarter note G1, a quarter note F1, a quarter note E1, a quarter note D1, a quarter note C1, a quarter note B0, and a quarter note A0.

ad lib

A single staff of musical notation starting with a double bar line and repeat sign. It contains a half note G2, a half note A2, a quarter note G2, a quarter note F2, a quarter note E2, a quarter note D2, a quarter note C2, a quarter note B1, a quarter note A1, a quarter note G1, a quarter note F1, a quarter note E1, a quarter note D1, a quarter note C1, a quarter note B0, and a quarter note A0.

Batterie page 1:

♩ = 104 Intro



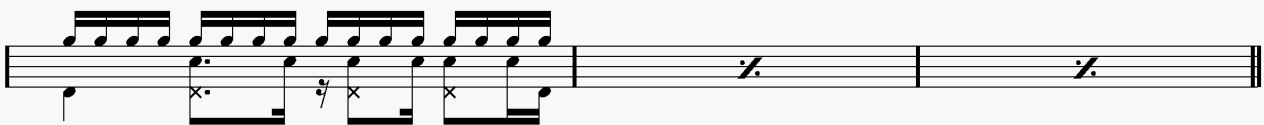
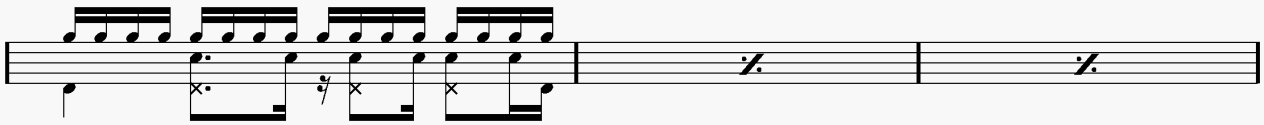
Couplet 1



Refrain 1



Couplet 2



Batterie page 2:

Refrain 2

Musical notation for Refrain 2, consisting of two staves. The top staff features a complex rhythmic pattern of eighth notes with various rests and accents. The bottom staff shows a simpler bass line with quarter notes and rests, including a double bar line with repeat dots.

Pont 1

Musical notation for Pont 1, consisting of two staves. The top staff has a rhythmic pattern of eighth notes with accents. The bottom staff has a bass line with quarter notes and rests, including a double bar line with repeat dots.

Couplet 3

Musical notation for Couplet 3, consisting of four staves. Each staff has a rhythmic pattern of eighth notes with accents on the top staff and a bass line with quarter notes and rests on the bottom staff, including a double bar line with repeat dots.

Batterie page 3:

The first section of the drum part consists of two measures. The first measure contains a series of eighth notes with accents (>) on the top staff, and a bass drum pattern on the bottom staff consisting of a quarter note, a quarter rest, and a quarter note. The second measure contains a repeat sign (⌋) on the top staff and a quarter rest on the bottom staff.

Refrain 3

Refrain 3 consists of two measures. The first measure has a top staff with eighth notes and accents, and a bass drum pattern of quarter, quarter rest, quarter. The second measure has a top staff with eighth notes and accents, and a bass drum pattern of quarter, quarter rest, quarter. A repeat sign (⌋) is placed at the end of the second measure.

This section consists of two measures. The first measure has a top staff with eighth notes and accents, and a bass drum pattern of quarter, quarter rest, quarter. The second measure contains a repeat sign (⌋) on the top staff and a quarter rest on the bottom staff.

Couplet 4

Couplet 4 consists of two measures. The first measure has a top staff with eighth notes and accents, and a bass drum pattern of quarter, quarter rest, quarter. The second measure has a top staff with eighth notes and accents, and a bass drum pattern of quarter, quarter rest, quarter. A repeat sign (⌋) is placed at the end of the second measure.

This section consists of two measures. The first measure has a top staff with eighth notes and accents, and a bass drum pattern of quarter, quarter rest, quarter. The second measure has a top staff with eighth notes and accents, and a bass drum pattern of quarter, quarter rest, quarter. A repeat sign (⌋) is placed at the end of the second measure.

Refrain 4

Refrain 4 consists of two measures. The first measure has a top staff with eighth notes and accents, and a bass drum pattern of quarter, quarter rest, quarter. The second measure has a top staff with eighth notes and accents, and a bass drum pattern of quarter, quarter rest, quarter. A repeat sign (⌋) is placed at the end of the second measure.

This section consists of two measures. The first measure has a top staff with eighth notes and accents, and a bass drum pattern of quarter, quarter rest, quarter. The second measure has a top staff with eighth notes and accents, and a bass drum pattern of quarter, quarter rest, quarter. A repeat sign (⌋) is placed at the end of the second measure.

Pont 2

Pont 2 consists of two measures. The first measure has a top staff with eighth notes and accents, and a bass drum pattern of quarter, quarter rest, quarter. The second measure contains a repeat sign (⌋) on the top staff and a quarter rest on the bottom staff.

Batterie page 4:

The first staff of music shows a drum set part. The top line contains a series of eighth-note patterns with accents (>) above them. The bottom line shows a bass drum pattern with 'x' marks indicating cymbal hits. The staff concludes with two measures of rests, each marked with a double bar line and a slash.

Chorus

The first staff of the Chorus section features a drum set part. The top line has eighth-note patterns with accents (>). The bottom line shows a bass drum pattern with 'x' marks. The staff ends with a double bar line and a slash.

The second staff of the Chorus section continues the drum set part with eighth-note patterns and accents on the top line, and a bass drum pattern with 'x' marks on the bottom line.

ad lib

The first staff of the ad lib section shows a drum set part. The top line has eighth-note patterns with accents (>). The bottom line shows a bass drum pattern with 'x' marks. The staff concludes with two measures of rests, each marked with a double bar line and a slash.

Écriture batterie:

The image displays six horizontal musical staves, each representing a different category of drum notation. Each staff is labeled with its respective instrument or technique above the staff line.

- bd 1**: A single eighth note on a staff.
- bd 2**: A single eighth note on a staff.
- rim-shot**: A single eighth note on a staff with an 'x' above the notehead.
- sd**: A single eighth note on a staff.

HH Pied: A single eighth note on a staff.

HH fermée: A single eighth note on a staff with an 'x' above the notehead.

HH entrouverte: A single eighth note on a staff with a slash above the notehead.

HH ouverte: A single eighth note on a staff with a slash above the notehead.

tom 1: A single eighth note on a staff.

tom 2: A single eighth note on a staff.

tom 3: A single eighth note on a staff.

tom 4: A single eighth note on a staff.

accent: A single eighth note on a staff with an accent (>) above the notehead.

note mutée: A single eighth note on a staff with a dot above the notehead and an 'x' above the notehead.

crash: A single eighth note on a staff with an 'x' above the notehead.

cloche: A single eighth note on a staff with an 'x' above the notehead.

ride: A single eighth note on a staff with an 'x' above the notehead.

dôme de cymbale: A single eighth note on a staff with a diamond above the notehead.

chinoise: A single eighth note on a staff with a triangle above the notehead.

splash: A single eighth note on a staff with a triangle above the notehead.

fla: A single eighth note on a staff with a slash above the notehead.

note muette: A single eighth note on a staff with a slash above the notehead.

Claps: A single eighth note on a staff with a triangle above the notehead.

Roulé = 2 coups d'1 seule main: A single eighth note on a staff with a slash above the notehead.

Titres disponibles:

Cliquez sur ce lien pour voir la liste des titres disponibles:

[titres disponibles](#)

Titres en préparation:

Cliquez sur ce lien pour voir la liste des titres en préparation:

[titres en préparation](#)

Conclusion:

Si vous souhaitez faire des commentaires sur ce dossier vous pouvez me contacter sur ma messagerie: emmanuel.somenzi@free.fr