

Licence 4 c'est l'heure du jaune:

Table des matières

Introduction:.....	2
Tablature basse page 1:.....	3
Tablature basse page 2:.....	4
Tablature basse page 3:.....	5
Partition basse page 1:.....	6
Partition basse page 2:.....	7
Partition basse page 3:.....	8
Partition batterie page 1:.....	9
Partition batterie page 2:.....	10
Partition batterie page 3:.....	11
Partition batterie page 4:.....	12
Écriture batterie:.....	13

Introduction:

Un morceau en 2/4 ce qui est relativement rare.

Les seules difficultés de cette ligne de basse sont les contretemps en doubles-croches.

Pour la partition, il y a 3 dièses à la clef: le Fa#, le Do# et le Sol# mais il y a un changement de tonalité à partir du pont (+ 1 ton).

Pour la partie de batterie il n'y a que les breaks en doubles-croches qui pourraient poser des problèmes aux plus débutants.

Voici le lien pour écouter le morceau:

[Licence 4 c'est l'heure du jaune](#)

Bon courage à tous !

Tablature basse page 1:

Licence 4 c'est l'heure du jaune

Intro

1



5 2 4 4 2 4

Refrains 1 / 3

6



0 7 0 0 0

10



0 0 / / /

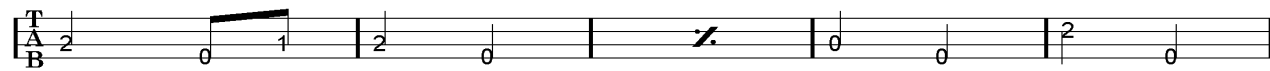
14



0 4 2 / /

ralentir la première fois.....

18



2 0 1 2 / 2 0


Refrains 2 / 4

23



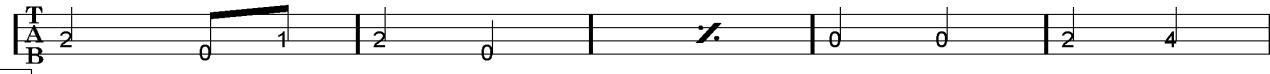
0 0 / / 0 4

27



0 0 4 2 / /

32



2 0 1 2 / 0 0 2 4

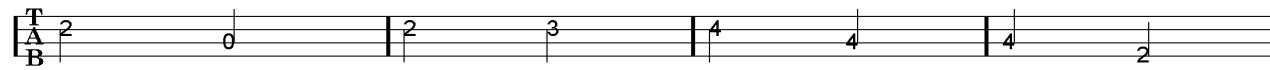
Couplets 1 / 3

37



5 0 5 0 1 2 1 4 3

41



2 0 2 3 4 4 4 2

45



2 2 2 2 1 0 2 2 0 2

Tablature basse page 2:

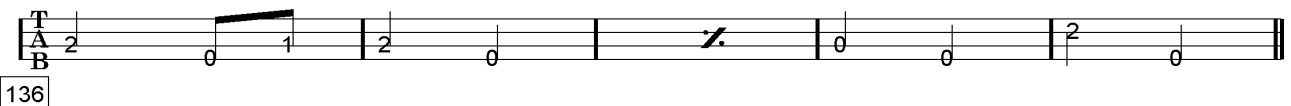
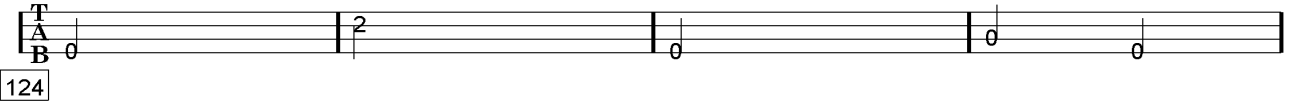
Couplets 2 / 4



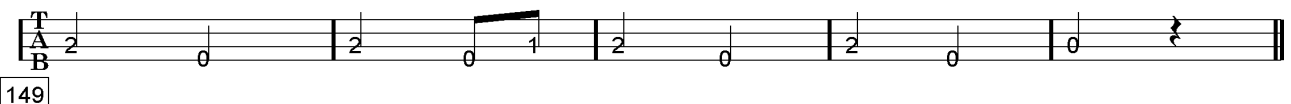
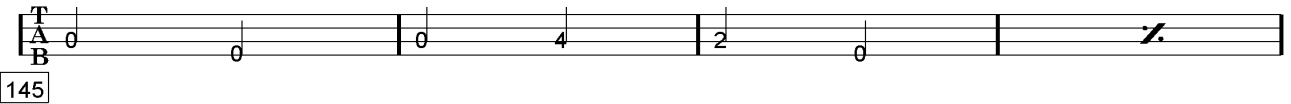
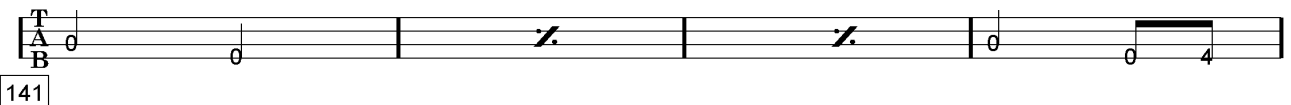
ralentir.....



Refrain 5



Refrain 6



Tablature basse page 3:

Pont

154

2 4 2 2 2

158

2 2 / 2 2 1 2 2

162

2 1 0 4 2 / /

166

4 2 3 4 2 /

Refrain 7

169

2 2 4 2 2 2 /

173

2 2 2 2 1 2 2 2 1 0

177

4 2 / / 4 2 3

ralentir.....

181

4 2 / 2 / /

Partition basse page 1:

Licence 4 c'est l'heure du jaune

Intro

Musical notation for the Intro section, measures 1-5. The key signature is three sharps (F#, C#, G#) and the time signature is 2/4. The first four measures are whole rests. The fifth measure contains a half note G#4 and a half note F#4 beamed together.

1

Refrains 1 / 3

Musical notation for Refrains 1 / 3, measures 6-9. The key signature is three sharps and the time signature is 2/4. Measure 6: quarter note G#4, quarter rest. Measure 7: quarter note F#4, quarter note G#4. Measure 8: quarter note G#4, quarter note F#4. Measure 9: quarter note G#4, quarter note F#4.

6

Musical notation for Refrains 1 / 3, measures 10-13. The key signature is three sharps and the time signature is 2/4. Measure 10: quarter note G#4, quarter note F#4. Measure 11: quarter rest. Measure 12: quarter rest. Measure 13: quarter rest.

10

Musical notation for Refrains 1 / 3, measures 14-17. The key signature is three sharps and the time signature is 2/4. Measure 14: quarter note G#4, quarter note F#4. Measure 15: quarter note G#4, quarter note F#4. Measure 16: quarter rest. Measure 17: quarter rest.

14

ralentir la première fois

Musical notation for Refrains 1 / 3, measures 18-22. The key signature is three sharps and the time signature is 2/4. Measure 18: quarter note G#4, quarter note F#4. Measure 19: quarter note G#4, quarter note F#4. Measure 20: quarter rest. Measure 21: quarter note G#4, quarter note F#4. Measure 22: quarter note G#4, quarter note F#4.

18

Refrains 2 / 4

Musical notation for Refrains 2 / 4, measures 23-26. The key signature is three sharps and the time signature is 2/4. Measure 23: quarter note G#4, quarter note F#4. Measure 24: quarter rest. Measure 25: quarter rest. Measure 26: quarter note G#4, quarter note F#4.

23

Musical notation for Refrains 2 / 4, measures 27-31. The key signature is three sharps and the time signature is 2/4. Measure 27: quarter note G#4, quarter note F#4. Measure 28: quarter note G#4, quarter note F#4. Measure 29: quarter note G#4, quarter note F#4. Measure 30: quarter rest. Measure 31: quarter rest.

27

Musical notation for Refrains 2 / 4, measures 32-36. The key signature is three sharps and the time signature is 2/4. Measure 32: quarter note G#4, quarter note F#4. Measure 33: quarter note G#4, quarter note F#4. Measure 34: quarter rest. Measure 35: quarter note G#4, quarter note F#4. Measure 36: quarter note G#4, quarter note F#4.

32

Couplets 1 / 3

Musical notation for Couplets 1 / 3, measures 37-40. The key signature is three sharps and the time signature is 2/4. Measure 37: quarter note G#4, quarter note F#4. Measure 38: quarter note G#4, quarter note F#4. Measure 39: quarter note G#4, quarter note F#4. Measure 40: quarter note G#4, quarter note F#4.

37

Musical notation for Couplets 1 / 3, measures 41-44. The key signature is three sharps and the time signature is 2/4. Measure 41: quarter note G#4, quarter note F#4. Measure 42: quarter note G#4, quarter note F#4. Measure 43: quarter note G#4, quarter note F#4. Measure 44: quarter note G#4, quarter note F#4.

41


Musical notation for Couplets 1 / 3, measures 45-48. The key signature is three sharps and the time signature is 2/4. Measure 45: quarter note G#4, quarter note F#4. Measure 46: quarter note G#4, quarter note F#4. Measure 47: quarter note G#4, quarter note F#4. Measure 48: quarter note G#4, quarter note F#4.

45

Partition basse page 2:

Couplets 2 / 4

49 

53 

57 

ralentir.....

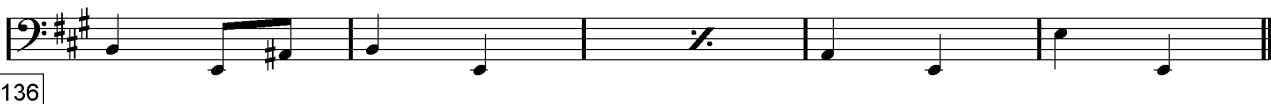
61 

Refrain 5


124 

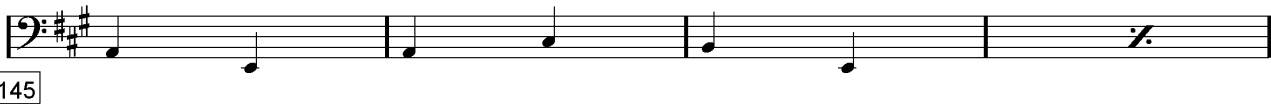
128 

132 

136 

Refrain 6

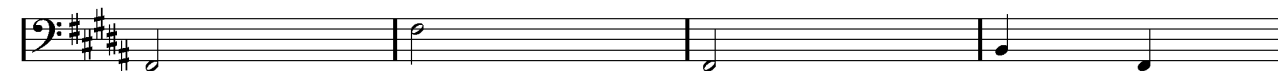
141 

145 

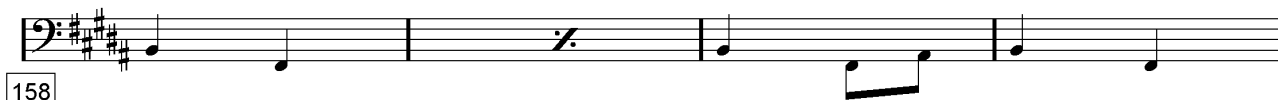
149 

Partition basse page 3:

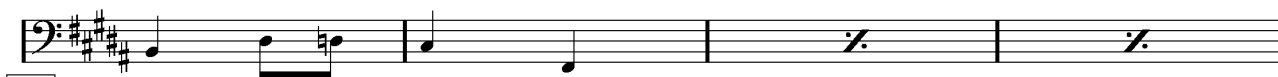
Pont



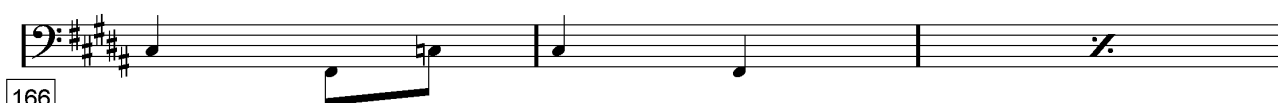
154



158

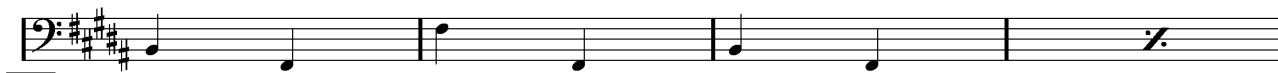


162



166

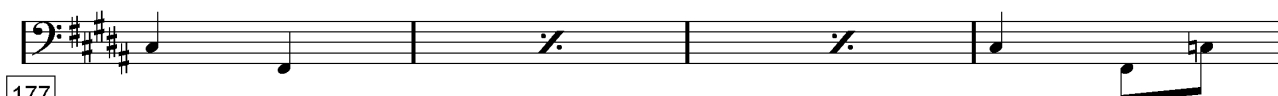
Refrain 7



169



173



177

ralentir.....



181

Partition batterie page 1:

♩ = 130

Licence 4 c'est l'heure du jaune

Intro

Musical notation for the Intro section, measures 1-5. The staff is in 2/4 time. Measures 1-3 are rests. Measure 4 has a snare drum hit (x) and a bass drum hit (z). Measure 5 has a snare drum hit (x) and a bass drum hit (z).

1

Refrains 1 / 3

Musical notation for Refrains 1 / 3, measures 6-8. The staff is in 2/4 time. Measure 6 has a snare drum hit (x) and a bass drum hit (z). Measure 7 has a snare drum hit (x) and a bass drum hit (z). Measure 8 has a snare drum hit (x) and a bass drum hit (z).

6

Musical notation for Refrains 1 / 3, measures 9-12. The staff is in 2/4 time. Measures 9-12 show a snare drum pattern (x) and a bass drum pattern (z).

9

Musical notation for Refrains 1 / 3, measures 13-16. The staff is in 2/4 time. Measures 13-16 show a snare drum pattern (x) and a bass drum pattern (z).

13

Musical notation for Refrains 1 / 3, measures 17-22. The staff is in 2/4 time. Measures 17-21 show a snare drum pattern (x) and a bass drum pattern (z). Measure 22 has a snare drum hit (x) and a bass drum hit (z). The text "ralentir la première fois....." is written above the staff.

17

Refrains 2 / 4

Musical notation for Refrains 2 / 4, measures 23-26. The staff is in 2/4 time. Measures 23-26 show a snare drum pattern (x) and a bass drum pattern (z).

23

Musical notation for Refrains 2 / 4, measures 27-30. The staff is in 2/4 time. Measures 27-30 show a snare drum pattern (x) and a bass drum pattern (z).

27

Musical notation for Refrains 2 / 4, measures 31-34. The staff is in 2/4 time. Measures 31-34 show a snare drum pattern (x) and a bass drum pattern (z).

31

Musical notation for Refrains 2 / 4, measures 35-38. The staff is in 2/4 time. Measures 35-38 show a snare drum pattern (x) and a bass drum pattern (z).

35

Partition batterie page 2:

Couplets 1 / 3

37

41

45

Couplets 2 / 4

49

53

57

ralentir.....

61

Refrain 5

124

Partition batterie page 3:

127

131

135

Refrain 6

141

145

149

Pont

154

157

161

Partition batterie page 4:

165

Refrain 7

169

173

177

ralentir.....

181

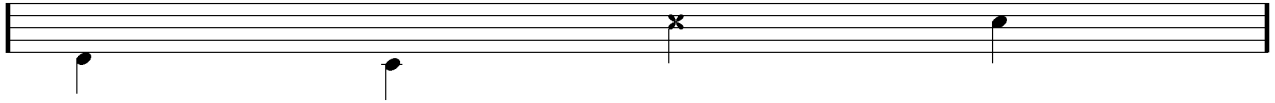
Écriture batterie:

bd 1

bd 2

rim-shot

sd

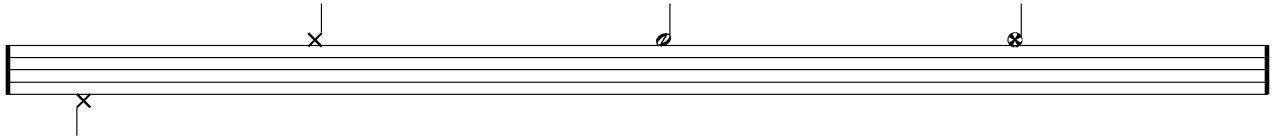


HH Pied

HH fermée

HH entrouverte

HH ouverte

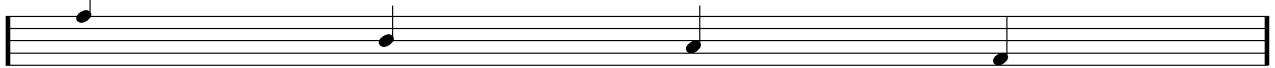


tom 1

tom 2

tom 3

tom 4

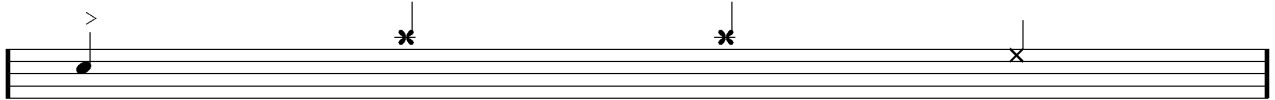


accent

note mutée

crash

cloche

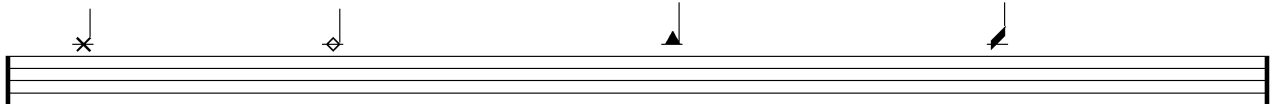


ride

dôme de cymbale

chinoise

splash



flas

note muette

