

Led Zeppelin You Shook Me:

Table des matières

Introduction:.....2
Tablature basse page 1:.....3
Tablature basse page 2:.....4
Partition basse page 1:.....5
Partition basse page 2:.....6
Partition batterie page 1:.....7
Partition batterie page 2:.....8
Partition batterie page 3:.....9
Écriture batterie:.....10

Introduction:

Une belle ligne de basse blues qui permet de se familiariser avec l'écriture en 12/8, pour les effets de jeu il y a juste un glissé sur la 4ème mesure du chorus 2, notez que dans ce morceau John Paul Jones nous fait une nouvelle fois une démonstration intelligente de l'utilisation des chromatismes (une de ses spécialités).

Pour la partition il y a 4 dièses à la clef: le Do#, le Ré#, le Fa# et le Sol#.

Pour la batterie les plus grosses difficultés ce sont les breaks en doubles-croches, en sextolets et même en triples-croches (sur un tempo très lent heureusement).

Voici le lien pour écouter le morceau:

[led zeppelin you shook me](#)

Bon courage à tous !

Tablature basse page 1:

Led Zeppelin You Shook Me

Intro 1

Intro 2

1

Refrain 1

6

10

14

Couplet 1

18

22

26

Chorus 1

30

34

38

Chorus 2

42

Tablature basse page 2:

46

5 7 5 4 7 4 7 7 5 7 5 | | 0 7 0 4 7 4 7 7 5 6 7 | 0 7 0 4 7 4 7 7 4 5 6

50

7 7 7 6 7 6 9 7 9 9 9 | 5 7 5 4 7 4 7 7 4 5 6 | 7 7 7 6 6 7 7 8 8 | 7 7 4 5 6 7 7 7 7 7 7

Chorus 3

54

0 7 0 4 7 4 7 7 5 3 | | | 0 7 0 4 5 6 7 5 6 7 7 6

58

60

0 7 0 4 7 4 7 7 5 6 7 | 0 7 0 4 7 4 5 7 5 6 6 | 7 7 7 7 7 7 7 6

63

5 7 5 4 7 4 7 7 5 7 5 7 | 0 7 0 4 7 4 3 7 3 2 7 2 | 0 7 0 4 5 6 7 7 5 6 7

Refrain 2

66

0 7 0 4 7 4 7 7 5 3 | 0 7 0 4 7 4 7 7 5 6 7 | 0 7 0 4 7 4 7 7 5 3

69

0 7 0 4 7 4 7 7 2 3 4 | 5 7 5 4 7 4 7 7 5 6 7 | 5 7 5 4 7 4 7 7 4 5 6

72

0 7 0 4 7 4 7 7 5 3 | 0 7 0 4 7 4 7 7 4 5 6 | 7 7 6 6 9 9 6 7 6

Final

75

81

Partition basse page 1:

Led Zeppelin You Shook Me

Intro 1

Intro 2

Refrain 1

Couplet 1

Chorus 1

Chorus 2

1 3 6 10 14 18 22 26 30 34 38 42

Partition basse page 2:

46 

50 

Chorus 3

54 

58 

60 

63 

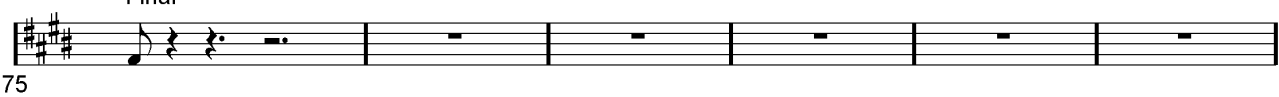
Refrain 2

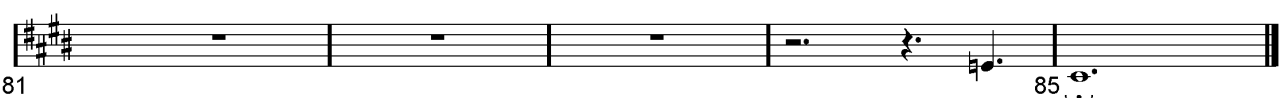
66 

69 

72 

Final

75 

81 

85 

Partition batterie page 2:

Chorus 2

Musical notation for Chorus 2, measures 42-50. The notation consists of two staves per measure. The top staff contains a series of eighth notes with 'x' marks above them, indicating a specific drum pattern. The bottom staff contains a series of quarter notes. Measure 42 starts with an asterisk (*). Measures 46 and 50 contain triplets (3) in the top staff. Measure 50 includes a double bar line with a slash (/) indicating a section break.

Chorus 3

Musical notation for Chorus 3, measures 54-63. The notation consists of two staves per measure. The top staff contains a series of eighth notes with 'x' marks above them. The bottom staff contains a series of quarter notes. Measure 54 starts with an asterisk (*). Measures 58 and 60 contain triplets (3) in the top staff. Measure 63 includes a double bar line with a slash (/) indicating a section break.

Refrain 2

Musical notation for Refrain 2, measures 66-72. The notation consists of two staves per measure. The top staff contains a series of eighth notes with 'x' marks above them. The bottom staff contains a series of quarter notes. Measure 66 starts with an asterisk (*). Measures 69 and 72 contain triplets (3) in the top staff.

Partition batterie page 3:

Final

Musical score for battery page 3, measures 75-81. The score consists of two staves. The first staff starts at measure 75 and contains six measures of music. The second staff starts at measure 81 and contains six measures of music. The notation includes various rhythmic values, rests, and dynamic markings.

75

81

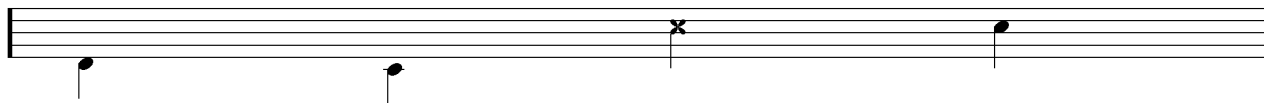
Écriture batterie:

bd 1

bd 2

rim-shot

sd

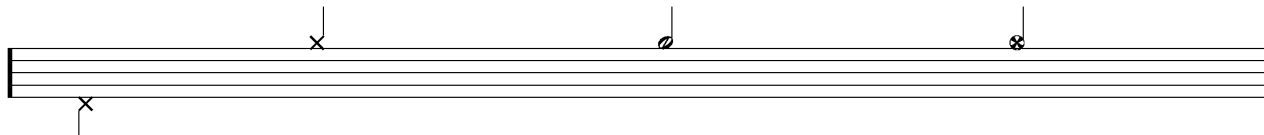


HH Pied

HH fermée

HH entrouverte

HH ouverte

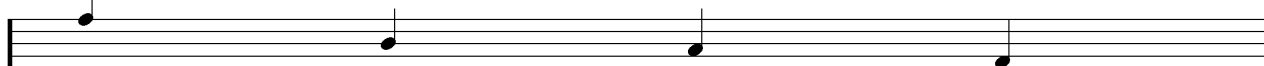


tom 1

tom 2

tom 3

tom 4

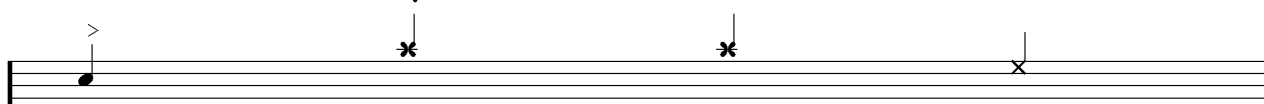


accent

note mutée

crash

cloche

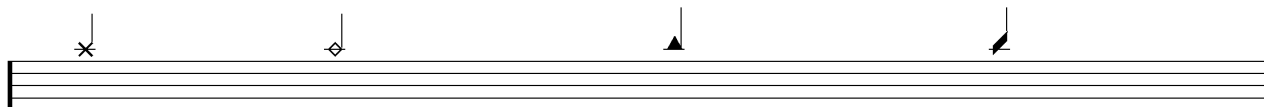


ride

dôme de cymbale

chinoise

splash



flas

note muette

