

Led Zeppelin Ramble On:

Table des matières

Introduction:.....2
Tablature basse page 1:.....3
Tablature basse page 2:.....4
Tablature basse page 3:.....5
Partition basse page 1:.....6
Partition basse page 2:.....7
Partition basse page 3:.....8
Partition batterie page 1:.....9
Partition batterie page 2:.....10
Écriture batterie:.....11

Introduction:

Une partie de basse très difficile (c'est souvent le cas avec Led Zeppelin) avec beaucoup de notes à jouer, il y a glissés, des hammers et des mises en place rythmique en doubles-croches pas faciles à exécuter avec des syncopes et des contretemps, notez que dans ce morceau John Paul Jones nous fait une démonstration intelligente de l'utilisation des chromatismes (une de ses spécialités).

Pour la partition de basse il y a 3 dièses à la clef: le Do#, le Fa# et le Sol#.

Pour la batterie la plus grosse difficulté c'est le nombre de notes et le placement rythmique de la grosse caisse (une habitude chez John Bonham qui pourtant n'avait qu'une seule grosse caisse et pas de double pédale), à part ça il y a juste quelques breaks sur la caisse claire en doubles-croches, notez qu'une grande partie du morceau est jouée uniquement sur un conga en doubles-croches.

Voici le lien pour écouter le morceau:

[led zeppelin ramble on](#)

Bon courage à tous !

Tablature basse page 1:
Led Zeppelin Ramble On

Intro

1

The intro consists of four measures of a single bass line. The first measure has a whole note on the 7th fret. The second measure has a whole note on the 9th fret. The third measure has a whole note on the 7th fret. The fourth measure has a whole note on the 9th fret.

glissé

5

The glissé section consists of four measures. The first measure has a whole note on the 7th fret. The second measure has a whole note on the 9th fret, followed by a glissé from the 9th fret to the 11th fret. The third measure has a whole note on the 13th fret. The fourth measure has a whole note on the 11th fret, followed by a glissé from the 11th fret to the 9th fret.

4x Couplet 1

glissé

9

The Couplet 1 section consists of four measures. The first measure has a whole note on the 7th fret. The second measure has a whole note on the 9th fret, followed by a glissé from the 9th fret to the 11th fret. The third measure has a whole note on the 13th fret. The fourth measure has a whole note on the 11th fret, followed by a glissé from the 11th fret to the 9th fret.

Pré-Refrain 1

25

The Pré-Refrain 1 section consists of four measures. The first measure has a whole note on the 2nd fret. The second measure has a whole note on the 4th fret. The third measure has a whole note on the 2nd fret. The fourth measure has a whole note on the 4th fret.

Refrain 1

29

The Refrain 1 section consists of four measures. The first measure has a whole note on the 7th fret. The second measure has a whole note on the 9th fret. The third measure has a whole note on the 7th fret. The fourth measure has a whole note on the 9th fret.

31

The Refrain 1 section continues with four measures. The first measure has a whole note on the 7th fret. The second measure has a whole note on the 9th fret. The third measure has a whole note on the 7th fret. The fourth measure has a whole note on the 9th fret.

33

The Refrain 1 section continues with four measures. The first measure has a whole note on the 7th fret. The second measure has a whole note on the 9th fret. The third measure has a whole note on the 7th fret. The fourth measure has a whole note on the 9th fret.

35

The Refrain 1 section continues with four measures. The first measure has a whole note on the 7th fret. The second measure has a whole note on the 9th fret. The third measure has a whole note on the 7th fret. The fourth measure has a whole note on the 9th fret.

Couplet 2

glissé

37

The Couplet 2 section consists of four measures. The first measure has a whole note on the 7th fret. The second measure has a whole note on the 9th fret, followed by a glissé from the 9th fret to the 11th fret. The third measure has a whole note on the 13th fret. The fourth measure has a whole note on the 11th fret, followed by a glissé from the 11th fret to the 9th fret.

Pont

glissé

glissé

45

The Pont section consists of four measures. The first measure has a whole note on the 7th fret. The second measure has a whole note on the 9th fret, followed by a glissé from the 9th fret to the 11th fret. The third measure has a whole note on the 13th fret. The fourth measure has a whole note on the 11th fret, followed by a glissé from the 11th fret to the 9th fret.

Tablature basse page 2:

49

glissé glissé

53

Refrain 2

55

57

59

61

Solo glissé glissé glissé

65

Couplet 3 glissé

69

glissé glissé

73

glissé glissé

77

glissé glissé

Tablature basse page 3:

Pré-Refrain 2

81

Refrain 3

85

87

89

91

93

95

97

99

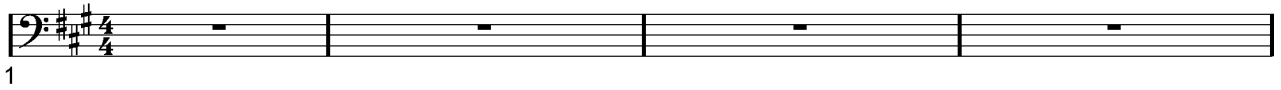
ad lib

101

103

Partition basse page 1:
Led Zeppelin Ramble On

Intro



Pré-Refrain 1



Refrain 1



Couplet 2



Pont



Partition basse page 2:

49

glissé

glissé

53

Refrain 2

55

57

59

61

Solo

glissé

glissé

glissé

65

Couplet 3

glissé

69

glissé

glissé

73

glissé

glissé

77

glissé

glissé

Partition basse page 3:

Pré-Refrain 2

81  Musical notation for measures 81-84, labeled "Pré-Refrain 2". The notation is in bass clef with a key signature of two sharps (F# and C#). It consists of four measures of music.

Refrain 3

85  Musical notation for measures 85-86, labeled "Refrain 3". The notation is in bass clef with a key signature of two sharps. It consists of two measures of music.

87  Musical notation for measures 87-88.

89  Musical notation for measures 89-90.

91  Musical notation for measures 91-92.

93  Musical notation for measures 93-94.

95  Musical notation for measures 95-96, with the annotation "glissé" above the final note of measure 96.

97  Musical notation for measures 97-98.

99  Musical notation for measures 99-100.

ad lib

101  Musical notation for measures 101-102, labeled "ad lib".

103  Musical notation for measures 103-104.

Partition batterie page 1:

Led Zeppelin Ramble On

♩ = 100

Intro
Congas

1

Couplet 1

9

Pré-Refrain 1

SD

25

Refrain 1

29

33

Couplet 2 crash = première fois seulement

Congas

37

Pont

45

SD

49

Partition batterie page 2:

Refrain 2

53

57

Solo

61

Couplet 3 crash = première fois seulement congas

65

Pré-Refrain 2

81

Refrain 3

85

ad lib.

93

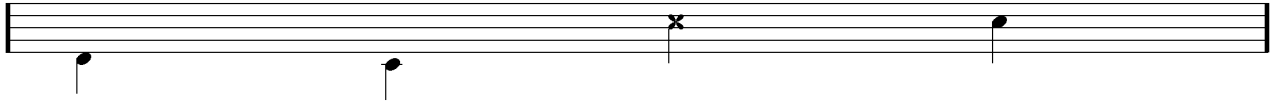
Écriture batterie:

bd 1

bd 2

rim-shot

sd

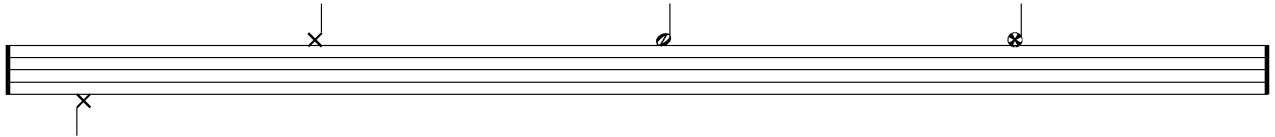


HH Pied

HH fermée

HH entrouverte

HH ouverte

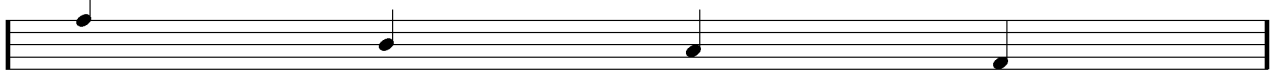


tom 1

tom 2

tom 3

tom 4

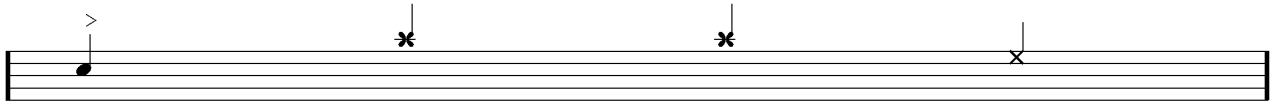


accent

note mutée

crash

cloche

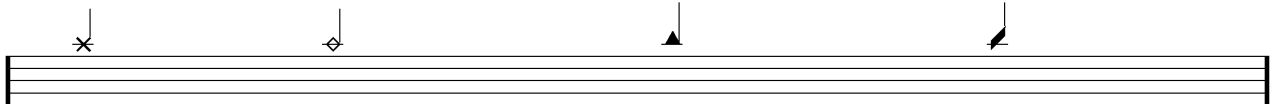


ride

dôme de cymbale

chinoise

splash



flas

note muette

