

Led Zeppelin Misty Mountain Hop:

Table des matières

Introduction:.....2
Tablature basse page 1:.....3
Tablature basse page 2:.....4
Partition basse page 1:.....5
Partition basse page 2:.....6
Partition batterie page 1:.....7
Partition batterie page 2:.....8
Partition batterie page 3:.....9
Partition batterie page 4:.....10
Écriture batterie:.....11

Introduction:

Une partie de basse assez répétitive et pas trop difficile ce qui est assez rare chez Led Zeppelin, les principales difficultés sont les contretemps, un glissé, deux notes muettes en doubles-croches et beaucoup de syncopes.

Pour la partition de basse il y a 2 dièses à la clef: le Fa# et le Do#.

Pour la batterie c'est plus compliqué, les plus grosses difficultés sont les contretemps à la grosse caisse, les breaks en doubles-croches, les flas et les syncopes sur la cymbale crash.

Voici le lien pour écouter le morceau:

[led-zeppelin-misty-mountain-hop](#)

Bon courage à tous !

Tablature basse page 1:

Led Zeppelin Misty Mountain Hop

Intro Piano

Musical notation for the first line of the Intro Piano section, measures 1 and 2. The staff shows a double bar line at measure 1, followed by a whole rest in measure 2.

Musical notation for the second line of the Intro section, measures 3 to 6. The notation features a sequence of eighth notes with fret numbers 5, 3, 0, 2, 0, 5, 5, 3, 0, 2, 0, 5, 5, 3, 0, 2, 0, 5, 5, 3, 0, 2, 0, 5.

Musical notation for the first line of Couplets 1/2, measures 7 to 9. The notation shows a sequence of eighth notes with fret numbers 5, 5, 5, 5, 5, 5, 5, 5, followed by a double bar line and a slash.

Musical notation for the second line of Couplets 1/2, measures 10 to 13. The notation features a sequence of eighth notes with fret numbers 5, 3, 0, 2, 0, 5, 5, 3, 0, 2, 0, 5, 5, 3, 0, 2, 0, 5, 5, 3, 0, 2, 0, 5.

Musical notation for the third line of Couplets 1/2, measures 14 to 17. The notation shows a sequence of eighth notes with fret numbers 5, 5, 5, 5, 5, 5, 5, 5, followed by a double bar line and a slash.

Musical notation for the fourth line of Couplets 1/2, measures 18 to 21. The notation features a sequence of eighth notes with fret numbers 5, 3, 0, 2, 0, 5, 5, 3, 0, 2, 0, 5, 5, 3, 0, 2, 0, 5, 5, 3, 0, 2, 0, 4.

Musical notation for the first line of Refrains 1/2, measures 22 to 25. The notation features a sequence of eighth notes with fret numbers 5, 5, 5, 5, 5, 5, 5, 5, followed by a double bar line and a slash.

Musical notation for the second line of Refrains 1/2, measures 26 to 29. The notation features a sequence of eighth notes with fret numbers 5, 5, 0, 3, 5, 5, 5, 5, 2, 3, 5, 5, 5, 5, 5.

Musical notation for the first line of Instrumental 1/2, measures 30 to 33. The notation features a sequence of eighth notes with fret numbers 5, 3, 0, 2, 0, 5, 5, 3, 0, 2, 0, 5, 5, 3, 0, 2, 0, 5, 5, 3, 0, 2, 0, 5.

Musical notation for the first line of Couplets 3/4, measures 34 to 65. The notation shows a sequence of eighth notes with fret numbers 5, 5, 5, 5, 5, 5, 5, 5, followed by a double bar line and a slash.

Musical notation for the second line of Couplets 3/4, measures 66 to 69. The notation features a sequence of eighth notes with fret numbers 5, 3, 0, 2, 0, 5, 5, 3, 0, 2, 0, 5, 5, 3, 0, 2, 0, 5, 5, 3, 0, 2, 0, 5.

Musical notation for the third line of Couplets 3/4, measures 70 to 73. The notation shows a sequence of eighth notes with fret numbers 5, 5, 5, 5, 5, 5, 5, 5, followed by a double bar line and a slash.

Musical notation for the fourth line of Couplets 3/4, measures 74 to 77. The notation features a sequence of eighth notes with fret numbers 5, 3, 0, 2, 0, 5, 5, 3, 0, 2, 0, 5, 5, 3, 0, 2, 0, 5, 5, 3, 0, 2, 0, 5.

Tablature basse page 2:

78

Refrain 3

82

Pont

86

Solo guitare

90

94

98

102

Instrumental 3

106

Refrain 4

126

129

Instrumental 4

132

ad lib. Final

136

Partition basse page 1:

Led Zeppelin Misty Mountain Hop

Intro Piano

1 2



Intro

6



Couplets 1 / 2

10



14



18



22



Refrains 1 / 2

26



30



Instrumental 1 / 2

34



Couplets 3 / 4

66



70



74



Partition basse page 2:

78  Musical notation for measures 78-81. The key signature is one sharp (F#). The notation consists of eighth and sixteenth notes with various rests and ties. A repeat sign with a double bar line and a circled cross symbol is at the end of the line.

Refrain 3
82  Musical notation for measures 82-85, labeled "Refrain 3". It features a mix of eighth and sixteenth notes with rests.

Pont
86  Musical notation for measures 86-89, labeled "Pont". It includes some notes with 'x' marks above them, possibly indicating specific fretting or techniques. The line ends with a repeat sign.

Solo guitare
90  Musical notation for measures 90-93, labeled "Solo guitare". It consists of eighth and sixteenth notes.

94  Musical notation for measures 94-97. It continues the eighth and sixteenth note pattern.


98  Musical notation for measures 98-101. It includes some notes with accidentals and rests.

102  Musical notation for measures 102-105. It features a mix of eighth and sixteenth notes.

Instrumental 3
106  Musical notation for measures 106-119, labeled "Instrumental 3". It consists of eighth and sixteenth notes. The line ends with a repeat sign and a circled cross symbol.

♠ Refrain 4
126  Musical notation for measures 126-129, labeled "Refrain 4" with a circled cross symbol. It features eighth and sixteenth notes.

129  Musical notation for measures 129-132. It includes some notes with rests and ties.

Instrumental 4
132  Musical notation for measures 132-135, labeled "Instrumental 4". It features a mix of eighth and sixteenth notes.

ad lib. Final
136  Musical notation for measures 136-140, labeled "ad lib. Final". It consists of eighth and sixteenth notes. The line ends with a double bar line and repeat dots.

Partition batterie page 1:

Led Zeppelin Misty Mountain Hop

♩ = 140

Intro Piano

Musical notation for measures 1 and 2. Measure 1 is a whole rest. Measure 2 is a whole rest. Measure 3 contains a quarter rest followed by a quarter note G4, an eighth note A4, and an eighth note B4. Measure 4 contains a quarter note C5, a quarter note B4, and a quarter note A4. The key signature has one sharp (F#) and the time signature is 4/4.

Intro

Musical notation for measures 6 through 9. Each measure consists of a quarter note on the bass line and a quarter note on the treble line. The notes are: 6: G2, G4; 7: A2, A4; 8: B2, B4; 9: C3, C5. The treble line notes are marked with an asterisk (*).

Couplets 1 / 2

Musical notation for measures 10 through 13. Each measure consists of a quarter note on the bass line and a quarter note on the treble line. The notes are: 10: G2, G4; 11: A2, A4; 12: B2, B4; 13: C3, C5. The treble line notes are marked with an asterisk (*).

Musical notation for measures 14 through 17. Each measure consists of a quarter note on the bass line and a quarter note on the treble line. The notes are: 14: G2, G4; 15: A2, A4; 16: B2, B4; 17: C3, C5. The treble line notes are marked with an asterisk (*).

Musical notation for measures 18 through 21. Each measure consists of a quarter note on the bass line and a quarter note on the treble line. The notes are: 18: G2, G4; 19: A2, A4; 20: B2, B4; 21: C3, C5. The treble line notes are marked with an asterisk (*).

Musical notation for measures 22 through 25. Each measure consists of a quarter note on the bass line and a quarter note on the treble line. The notes are: 22: G2, G4; 23: A2, A4; 24: B2, B4; 25: C3, C5. The treble line notes are marked with an asterisk (*).

Refrains 1 / 2

Musical notation for measures 26 through 29. Each measure consists of a quarter note on the bass line and a quarter note on the treble line. The notes are: 26: G2, G4; 27: A2, A4; 28: B2, B4; 29: C3, C5. The treble line notes are marked with an asterisk (*).

Musical notation for measures 30 through 33. Each measure consists of a quarter note on the bass line and a quarter note on the treble line. The notes are: 30: G2, G4; 31: A2, A4; 32: B2, B4; 33: C3, C5. The treble line notes are marked with an asterisk (*).

Instrumental 1 / 2

Musical notation for measures 34 through 37. Each measure consists of a quarter note on the bass line and a quarter note on the treble line. The notes are: 34: G2, G4; 35: A2, A4; 36: B2, B4; 37: C3, C5. The treble line notes are marked with an asterisk (*).

Partition batterie page 2:

Couplet 3

66

70

74

78

Refrain 3

82

Pont

86

Solo guitare

90

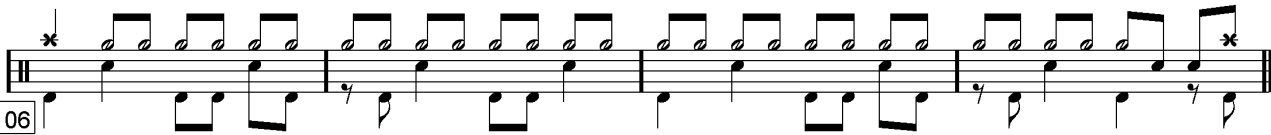
94

Partition batterie page 3:

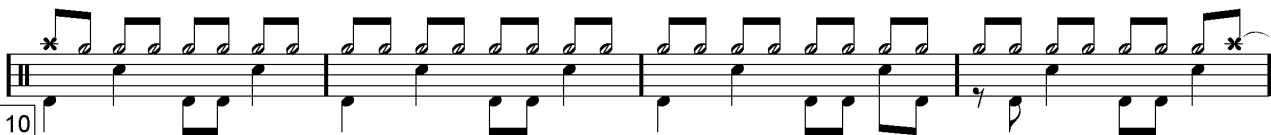
98  Musical notation for measure 98, featuring a snare drum pattern with eighth notes and a cymbal pattern with quarter notes.


102  Musical notation for measure 102, featuring a snare drum pattern with eighth notes and a cymbal pattern with quarter notes.

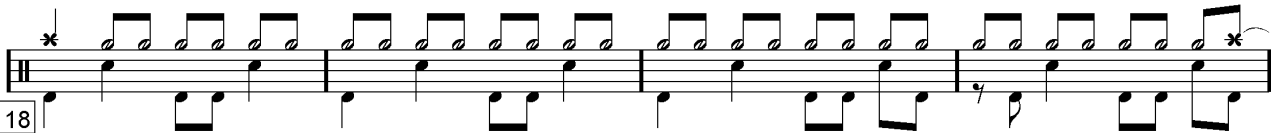
Instrumental 3

106  Musical notation for measure 106, featuring a snare drum pattern with eighth notes and a cymbal pattern with quarter notes.

Couplet 4


110  Musical notation for measure 110, featuring a snare drum pattern with eighth notes and a cymbal pattern with quarter notes.

114  Musical notation for measure 114, featuring a snare drum pattern with eighth notes and a cymbal pattern with quarter notes.

118  Musical notation for measure 118, featuring a snare drum pattern with eighth notes and a cymbal pattern with quarter notes.

122  Musical notation for measure 122, featuring a snare drum pattern with eighth notes and a cymbal pattern with quarter notes.

Refrain 4

126  Musical notation for measure 126, featuring a snare drum pattern with eighth notes and a cymbal pattern with quarter notes.

Partition batterie page 4:

129  Musical notation for measure 129, featuring a series of eighth notes and quarter notes on a single staff.

Instrumental 4

132  Musical notation for measure 132, including a drum line with 'x' marks and a melodic line with eighth notes.


Final

136  Musical notation for measure 136, starting with a starburst and featuring a melodic line with eighth notes.

140  Musical notation for measure 140, featuring a melodic line with eighth notes and a drum line.

144  Musical notation for measure 144, featuring a melodic line with eighth notes and a drum line.

148  Musical notation for measure 148, featuring a melodic line with eighth notes and a drum line.

ad lib. 152  Musical notation for measure 152, starting with 'ad lib.' and a starburst, featuring a melodic line with eighth notes and a drum line.

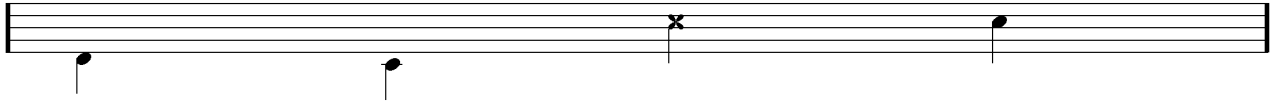
Écriture batterie:

bd 1

bd 2

rim-shot

sd

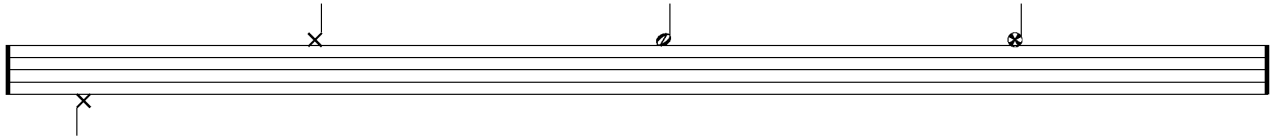


HH Pied

HH fermée

HH entrouverte

HH ouverte

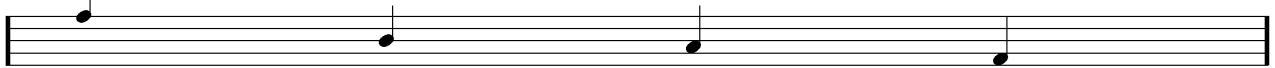


tom 1

tom 2

tom 3

tom 4

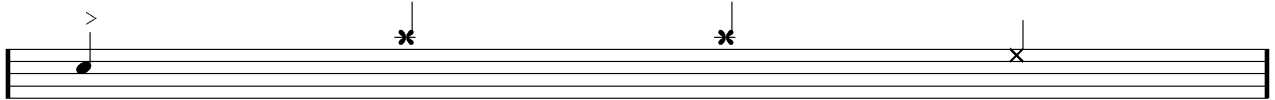


accent

note mutée

crash

cloche

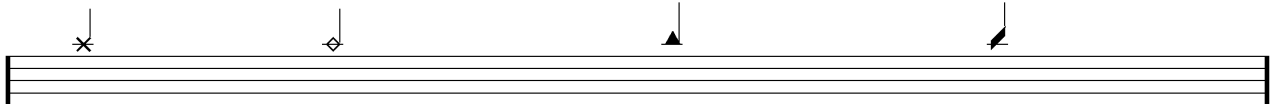


ride

dôme de cymbale

chinoise

splash



flas

note muette

