

Led Zeppelin Celebration Day:

Table des matières

Introduction:.....2
Tablature basse page 1:.....3
Tablature basse page 2:.....4
Partition basse page 1:.....5
Partition basse page 2:.....6
Partition batterie page 1:.....7
Partition batterie page 2:.....8
Écriture batterie:.....9

Introduction:

Pour la basse il y a des syncopes, des contretemps et beaucoup de notes muettes, il y a également des chromatismes en doubles-croches pas faciles à exécuter.

Pour la partition au début de ce titre il y a 3 dièses à la clef: le Do#, le Fa# et le Sol#, mais **Attention il y a plusieurs changements d'armature au cours de ce morceau.**

Pour la batterie les plus grosses difficultés ce sont la mise en place rythmique de la grosse caisse et les breaks en doubles-croches sur la caisse claire, il faut également bien maîtriser la technique des flas.

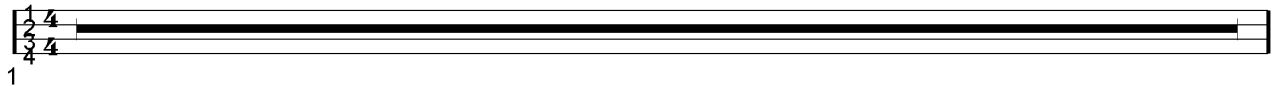
Voici le lien pour écouter le morceau:

[led zeppelin celebration day](#)

Bon courage à tous !

Tablature basse page 1:
Led Zeppelin Celebration Day

Intro = 14 mesures sans la basse



1

A single guitar staff with a treble clef and a 4/4 time signature. The staff contains a solid black bar, indicating a whole rest for the entire measure.



15

A guitar staff with a treble clef and a 4/4 time signature. The notation consists of a sequence of notes and rests: 5, x, 5, 5, 5, x, 5, x, 5, x, 5, x, 5, x, 5, x, 5, 5, 5, 5, 5, 5, x, 5, x, 5, 5, 5, 3, 5, 5, 3.

Couplets 1 / 4



19

A guitar staff with a treble clef and a 4/4 time signature. The notation consists of a sequence of notes and rests: x, 5, x, 5, x, 5, x, 5, x, 5, x, 5, 5, x, 5, x, 5, x, 5, x, x, 5, x, 5, x, 5, 5, 5, 3.



23

A guitar staff with a treble clef and a 4/4 time signature. The notation consists of a sequence of notes and rests: x, 5, x, 5, 5, 5, x, 5, x, 5, x, 5, x, 3, x, 5, x, 5, 5, 5, x, 5, x, 5, x, 5, 5, 5, 3, 5, 2. A circled cross symbol is located above the staff.

Refrains 1 / 2



27

A guitar staff with a treble clef and a 4/4 time signature. The notation consists of a sequence of notes and rests: 3, 3, 3, 2, 3, 4, 5, 5, 5, 5, 5, 3, 3, 3, 1, 1, 1, 1, 1, 0, 1, 3, 3, 3, 3, 3, 3, 2, 2, 3, 3, 4, 4.



31

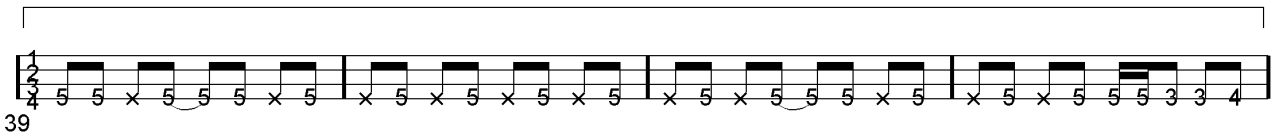
A guitar staff with a treble clef and a 4/4 time signature. The notation consists of a sequence of notes and rests: 5, 5, 5, 3, 2, 3, 5, 5, 5, 5, 5, 2, 5, 2, 3, 1, 1, 1, 1, 1, 0, 0, 1, 1, 3, 3, 3, 3, 3, 3, 2, 2, 2, 2, 2, 2.

1. Couplet 2



35

A guitar staff with a treble clef and a 4/4 time signature. The notation consists of a sequence of notes and rests: 5, 5, 5, 5, x, 5, x, 5, x, 5, x, 5, 5, 5, x, 5, 5, 5, x, 5, x, 5, x, 5, 5, 5, 3, 3, 3, 5, 3, 5, 3.



39

A guitar staff with a treble clef and a 4/4 time signature. The notation consists of a sequence of notes and rests: 5, 5, x, 5, 5, x, 5, x, 5, x, 5, x, 5, x, 5, x, 5, 5, 5, x, 5, x, 5, x, 5, 5, 5, 3, 3, 4.

Couplet 3



43

A guitar staff with a treble clef and a 4/4 time signature. The notation consists of a sequence of notes and rests: x, 5, x, 5, x, 5, x, 5, x, 5, x, 5, 5, 5, x, 5, x, 5, x, 5, 5, 5, x, 5, x, 5, 5, 5, 3, 3, 3, 3, 4.

Tablature basse page 2:

2. Solo

59

63

♣ Couplet 5

75

79

83

Final

87

91

91

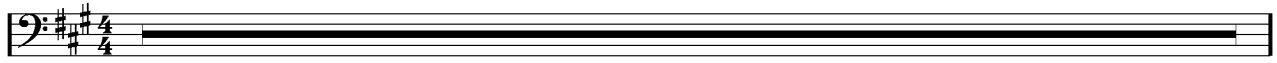
95

ad lib

99

Partition basse page 1:
Led Zeppelin Celebration Day

Intro = 14 mesures sans la basse



1



15

Couplets 1 / 4



19



23

Refrains 1 / 2



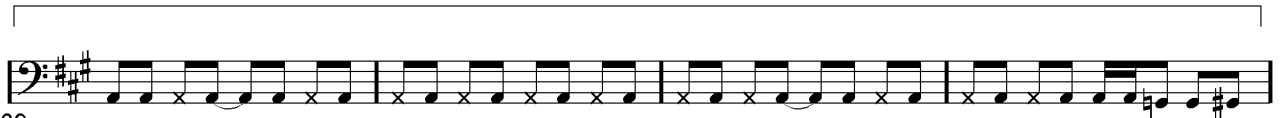
27



31



35



39



43

Partition basse page 2:

2. Solo

59

63

♩ Couplet 5

75

79

83

Final

87

91

91

95

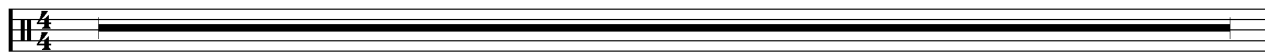
ad lib

99

Partition batterie page 1:

Led Zeppelin Celebration Day

Intro = 14 mesures sans batterie



1



15

Couplets 1 / 4



19



23

Refrains 1 / 2



27



31

1. Couplet 2



35



39

Couplet 3



43

Partition batterie page 2:

2. Solo



59



63

♢ Couplet 5



75



79



83

Final



87



91



95



99

ad lib.



103

Detailed description: This page of a drum score contains ten staves of music. The first two staves (measures 59-66) are marked '2. Solo' and feature a complex rhythmic pattern with many 'x' marks above the notes, indicating cymbal or snare hits. The next two staves (measures 75-86) are marked '♢ Couplet 5' and consist of a steady eighth-note pattern. The following two staves (measures 87-98) are marked 'Final' and continue the eighth-note pattern with some variations. The last two staves (measures 99-106) are marked 'ad lib.' and feature a more relaxed, improvisational feel with some rests and dynamic markings. The score is written on a grand staff with a treble clef and a key signature of one flat.

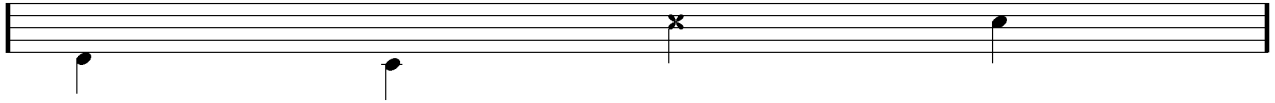
Écriture batterie:

bd 1

bd 2

rim-shot

sd

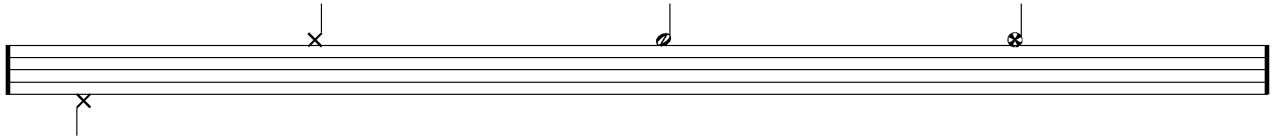


HH Pied

HH fermée

HH entrouverte

HH ouverte

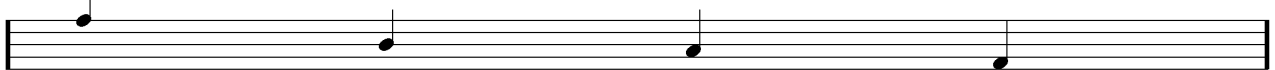


tom 1

tom 2

tom 3

tom 4

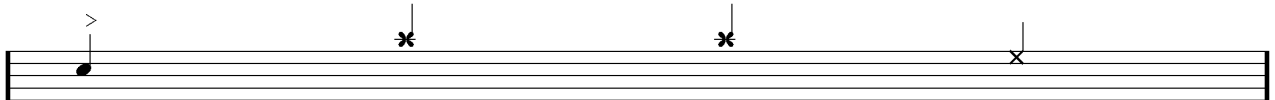


accent

note mutée

crash

cloche

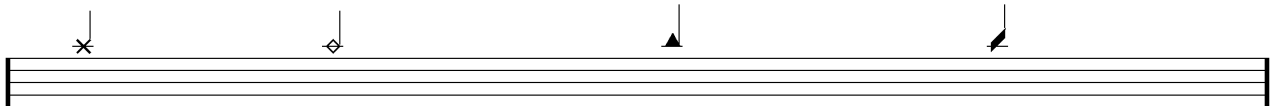


ride

dôme de cymbale

chinoise

splash



flas

note muette

