

Laurent Morain Elle Est Partie Sans Moi:

Table des matières

Introduction:.....	2
Tablature basse page 1:.....	3
Tablature basse page 2:.....	4
Partition basse page 1:.....	5
Partition basse page 2:.....	6
Partition batterie page 1:.....	7
Partition batterie page 2:.....	8
Écriture batterie:.....	9

Introduction:

Un morceau composé par Didier Barbelivien à la fin des années 80 ça nous donne des parties musicales style Top 50 d'une autre époque probablement programmés en midi à la basse comme à la batterie.

Les seules difficultés de cette ligne de basse sont les contretemps, les syncopes et les octaves en doubles-croches sur le Sol pendant les refrains.

Pour la batterie les seules difficultés sont les contretemps à la grosse caisse, les breaks en doubles-croches, quelques coups de cymbales en syncopes et il y a un crescendo sur la caisse claire à la fin du premier refrain.

Voici le lien pour écouter le morceau:

[Laurent Morain Elle Est Partie Sans Moi](#)

Bon courage à tous !

Partition basse page 1:

Laurent Morain Elle Est Partie Sans Moi

Intro



1

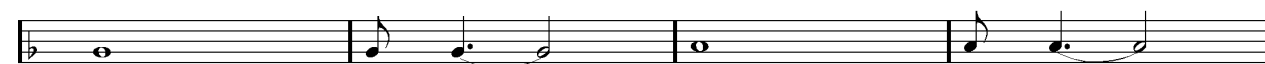
Couplet 1



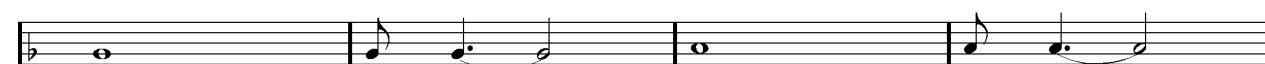
9



13



17

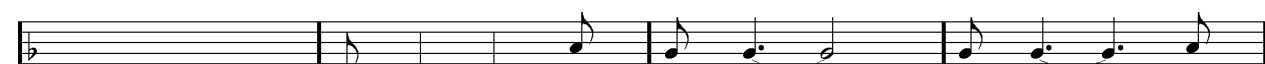


21

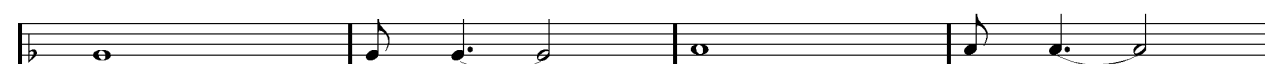
Couplets 2 / 3



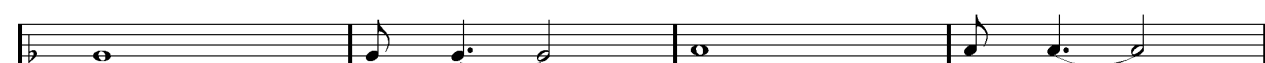
25



29

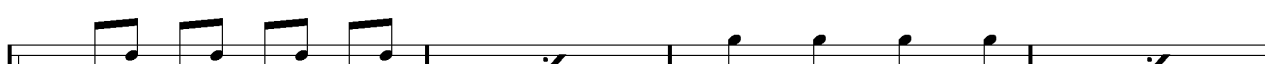


33



37

Refrains 1 / 2



41




45

Partition basse page 2:

49  Musical notation for measures 49-52. Measure 49 starts with a bass clef and a key signature of one flat. The melody consists of eighth notes. Measure 50 has a repeat sign. Measure 51 continues the eighth-note pattern. Measure 52 ends with a double bar line.

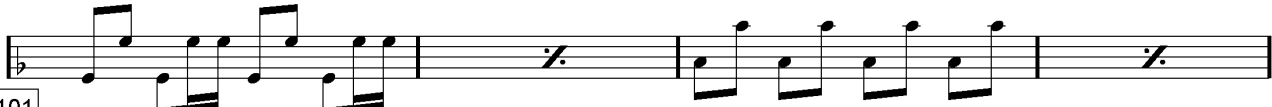
53  Musical notation for measures 53-57. Measure 53 continues the eighth-note pattern. Measure 54 has a repeat sign. Measure 55 continues the eighth-note pattern. Measure 56 has a first ending bracket over a quarter rest. Measure 57 ends with a double bar line.

2.  Musical notation for measures 58-61. Measure 58 starts with a second ending bracket over a quarter note. Measures 59-61 continue with a steady eighth-note pattern, ending with a double bar line.

Refrain 3  Musical notation for measures 62-65. Measure 62 starts with a repeat sign. Measures 63-65 continue with a steady eighth-note pattern, ending with a double bar line.

93  Musical notation for measures 66-69. Measure 66 starts with a repeat sign. Measures 67-69 continue with a steady eighth-note pattern, ending with a double bar line.

97  Musical notation for measures 70-73. Measure 70 starts with a repeat sign. Measures 71-73 continue with a steady eighth-note pattern, ending with a double bar line.

101  Musical notation for measures 74-77. Measure 74 starts with a repeat sign. Measures 75-77 continue with a steady eighth-note pattern, ending with a double bar line.

ad lib. Final  Musical notation for measures 78-81. Measure 78 starts with a repeat sign. Measures 79-81 continue with a steady eighth-note pattern, ending with a double bar line.

105

Partition batterie page 1:

Laurent Morain Elle Est Partie Sans Moi

♩ = 122

Break

Musical notation for the Break section, measures 0-1. It features a single measure with a drum set icon and a quarter note, followed by a measure with a quarter rest.

Intro

Musical notation for the Intro section, measures 1-5. It consists of two staves. The first staff has measures 1-4 with various rests and a quarter note, and measure 5 with a quarter note. The second staff has measures 1-5 with a consistent eighth-note drum pattern.

Couplet 1

Musical notation for Couplet 1, measures 9-24. It consists of two staves. The first staff has measures 9-12 with quarter notes and a quarter rest, and measures 13-24 with a consistent eighth-note drum pattern. The second staff has measures 9-12 with quarter notes and a quarter rest, and measures 13-24 with a consistent eighth-note drum pattern. There are first and second endings marked at measures 21-24.

♩ Couplets 2 / 3

Musical notation for Couplets 2 and 3, measures 25-40. It consists of two staves. The first staff has measures 25-28 with quarter notes and a quarter rest, and measures 29-40 with a consistent eighth-note drum pattern. The second staff has measures 25-28 with quarter notes and a quarter rest, and measures 29-40 with a consistent eighth-note drum pattern. There are first and second endings marked at measures 37-40.

Refrain 1

Musical notation for Refrain 1, measures 41-53. It consists of two staves. The first staff has measures 41-44 with quarter notes and a quarter rest, and measures 45-53 with a consistent eighth-note drum pattern. The second staff has measures 41-44 with quarter notes and a quarter rest, and measures 45-53 with a consistent eighth-note drum pattern. There are first and second endings marked at measures 50-53.

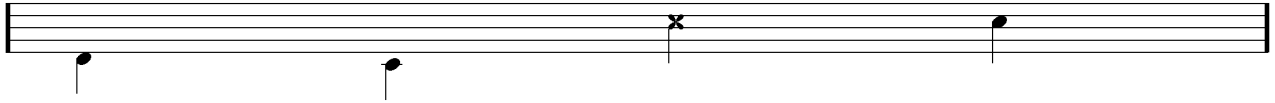
Écriture batterie:

bd 1

bd 2

rim-shot

sd

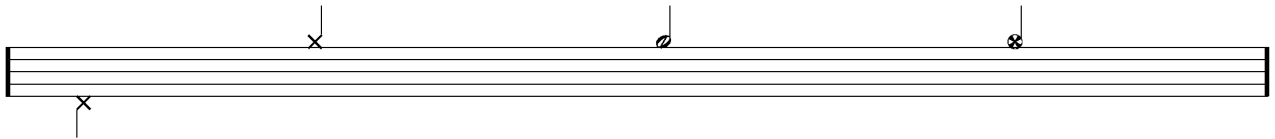


HH Pied

HH fermée

HH entrouverte

HH ouverte

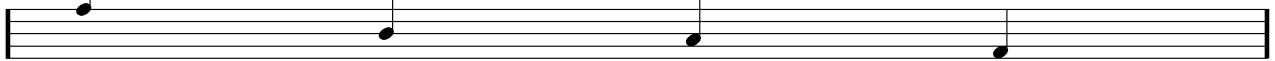


tom 1

tom 2

tom 3

tom 4

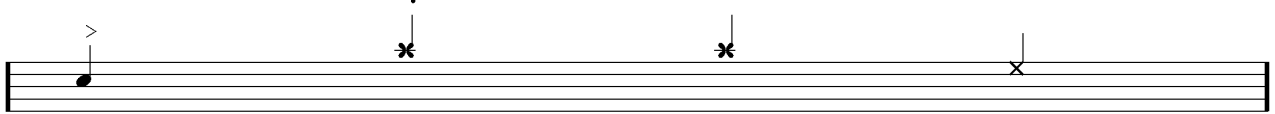


accent

note mutée

crash

cloche

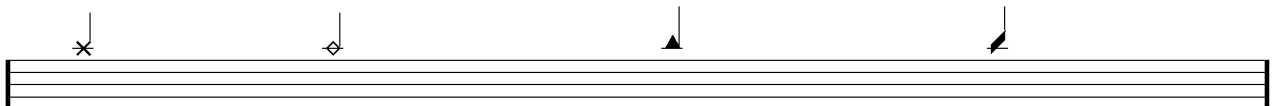


ride

dôme de cymbale

chinoise

splash



flas

note muette

