

La Compagnie Créole Ma Première Biguine Partie:

Table des matières

Introduction:.....2
Tablature basse:.....3
Partition basse:.....4
Partition batterie page 1:.....5
Partition batterie page 2:.....6
Écriture batterie:.....7

Introduction:

Une ligne de basse répétitive et sans aucun effet de jeu mais avec une mise en place rythmique difficile à tenir sur un tempo relativement rapide.

Pour jouer ce morceau à la batterie, il est impératif d'avoir une cloche fixée au dessus de la cymbale charleston, les grosses difficultés sont l'enchaînement entre la cloche et la charley et le placement rythmique de la caisse claire qui n'est pas évident, il y a également beaucoup de variantes sur le rythme et les ouvertures de charley.

Voici le lien pour écouter le morceau:

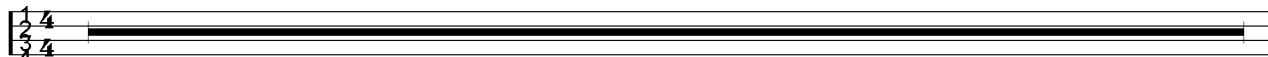
[La Compagnie Créole Ma Première Biguine Partie](#)

Bon courage à tous !

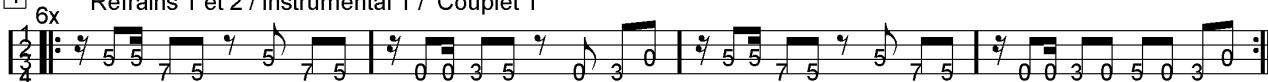
Tablature basse:

La Compagnie Créole Ma Première Biguine Partie

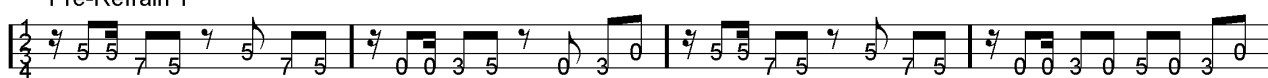
Intro = 6 mesures sans la basse



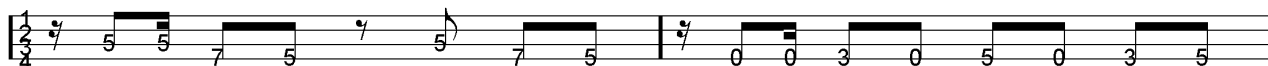
1 Refrains 1 et 2 / Instrumental 1 / Couplet 1



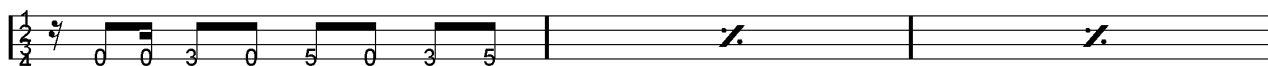
7 Pré-Refrain 1



31

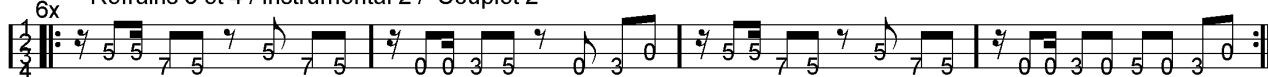


35



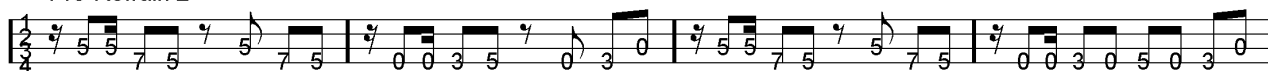
37

6x Refrains 3 et 4 / Instrumental 2 / Couplet 2

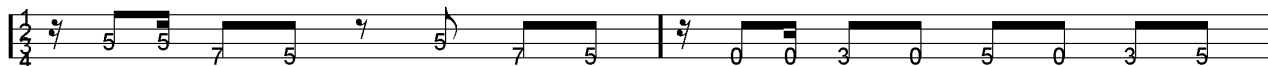


40

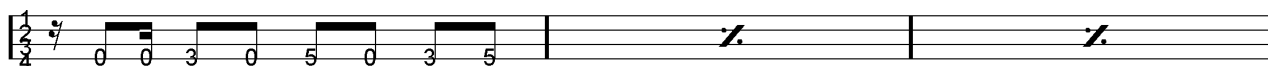
Pré-Refrain 2



64

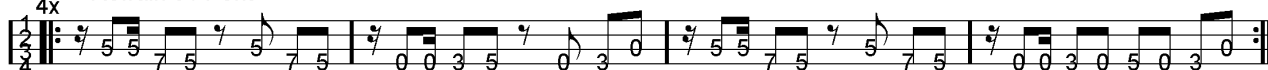


68



70

4x Refrain 5 / Pont

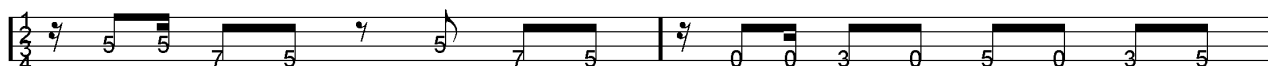


73

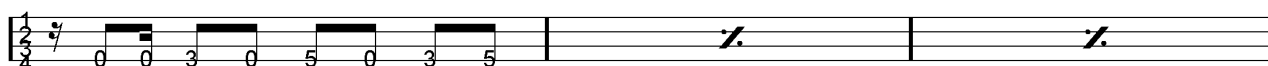
Pré-Refrain 3



89



93



95

ad lib. Refrain 6

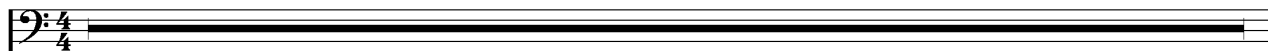


98

Partition basse:

La Compagnie Créole Ma Première Biguine Partie

Intro = 6 mesures sans la basse



1 Refrains 1 et 2 / Instrumental 1 / Couplet 1



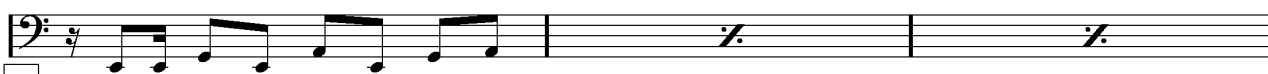
7 Pré-Refrain 1



31



35



37

Refrains 3 et 4 / Instrumental 2 / Couplet 2



40

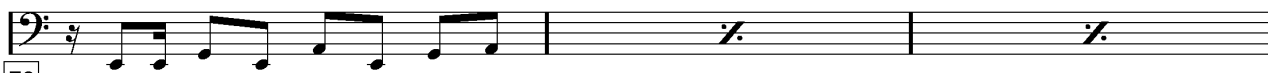
Pré-Refrain 2



64



68



70

Refrain 5 / Pont

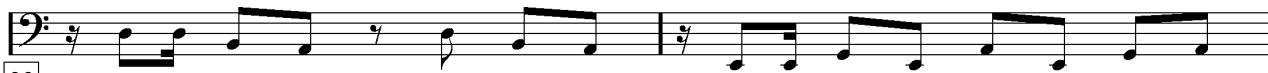


73

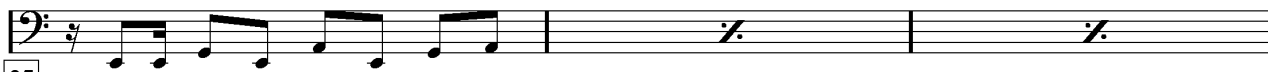
Pré-Refrain 3



89



93



95

ad lib. Refrain 6



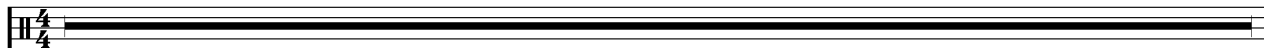
98

Partition batterie page 1:

La Compagnie Créole Ma Première Biguine Partie

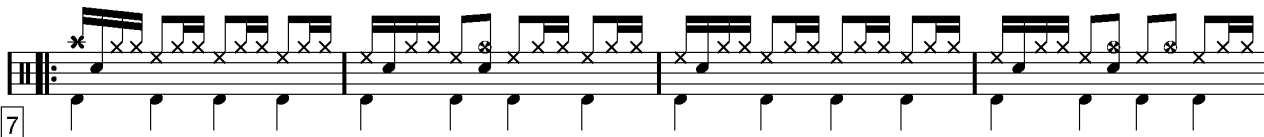
♩ = 120

Intro = 6 mesures sans batterie

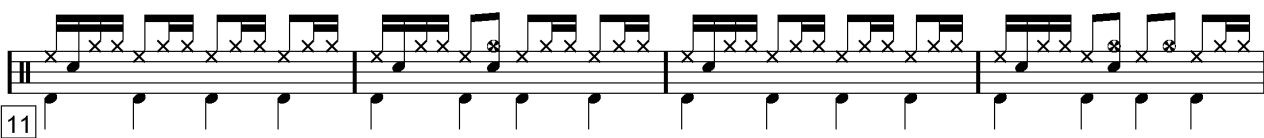


1

Refrains 1 / 3

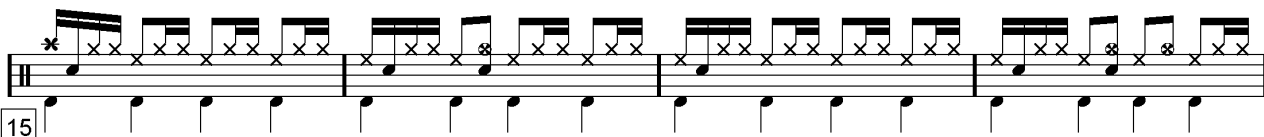


7



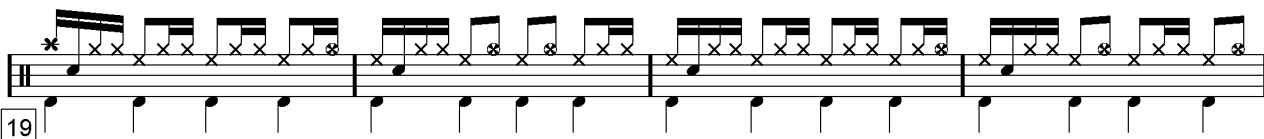
11

Refrains 2 / 4



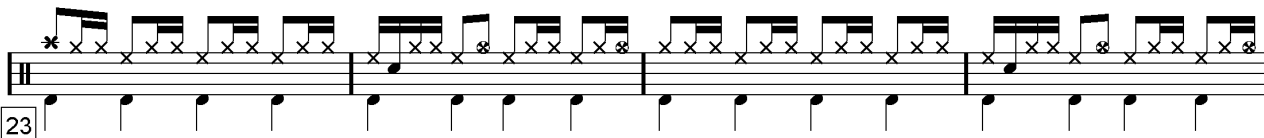
15

Instrumental 1 / 2

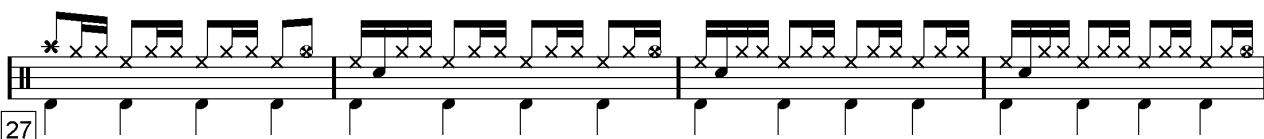


19

Couplets 1 / 2

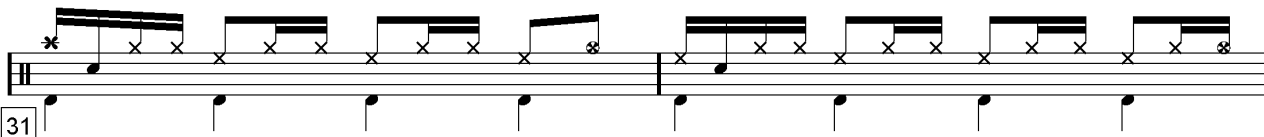


23

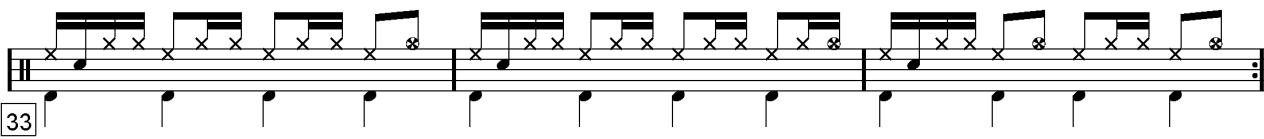


27

Pré-Refrains 1 / 2



31



33

Partition batterie page 2:

Refrain 5

Musical notation for Refrain 5, measures 73-76. The notation consists of two staves: a top staff with a treble clef and a bottom staff with a bass clef. The top staff contains a series of eighth notes with 'x' marks above them, indicating a specific drum pattern. The bottom staff contains a series of quarter notes. A box with the number '73' is located at the beginning of the first measure.

Musical notation for Refrain 5, measures 77-80. The notation consists of two staves: a top staff with a treble clef and a bottom staff with a bass clef. The top staff contains a series of eighth notes with 'x' marks above them. The bottom staff contains a series of quarter notes. A box with the number '77' is located at the beginning of the first measure.

Pont

Musical notation for Pont, measures 81-84. The notation consists of two staves: a top staff with a treble clef and a bottom staff with a bass clef. The top staff contains a series of eighth notes with 'x' marks above them. The bottom staff contains a series of quarter notes. A box with the number '81' is located at the beginning of the first measure.

Musical notation for Pont, measures 85-88. The notation consists of two staves: a top staff with a treble clef and a bottom staff with a bass clef. The top staff contains a series of eighth notes with 'x' marks above them. The bottom staff contains a series of quarter notes. A box with the number '85' is located at the beginning of the first measure.

Pré-Refrain 3

Musical notation for Pré-Refrain 3, measures 89-90. The notation consists of two staves: a top staff with a treble clef and a bottom staff with a bass clef. The top staff contains a series of eighth notes with 'x' marks above them. The bottom staff contains a series of quarter notes. A box with the number '89' is located at the beginning of the first measure.

Musical notation for Pré-Refrain 3, measures 91-92. The notation consists of two staves: a top staff with a treble clef and a bottom staff with a bass clef. The top staff contains a series of eighth notes with 'x' marks above them. The bottom staff contains a series of quarter notes. A box with the number '91' is located at the beginning of the first measure.

Refrain 6

Musical notation for Refrain 6, measures 98-101. The notation consists of two staves: a top staff with a treble clef and a bottom staff with a bass clef. The top staff contains a series of eighth notes with 'x' marks above them. The bottom staff contains a series of quarter notes. A box with the number '98' is located at the beginning of the first measure. The word 'ad lib.' is written above the first measure.

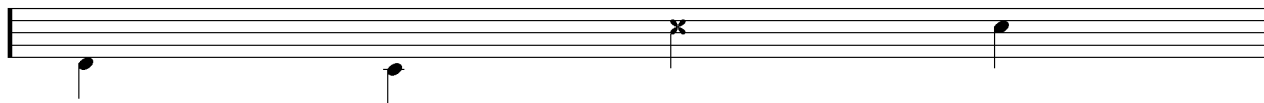
Écriture batterie:

bd 1

bd 2

rim-shot

sd

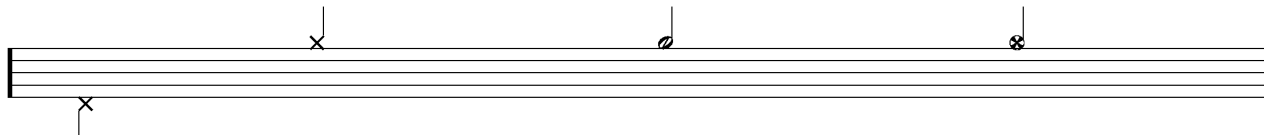


HH Pied

HH fermée

HH entrouverte

HH ouverte

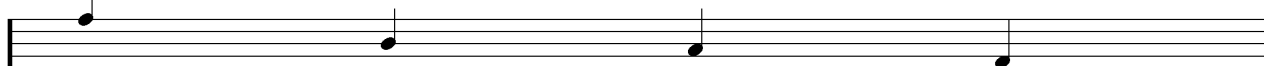


tom 1

tom 2

tom 3

tom 4

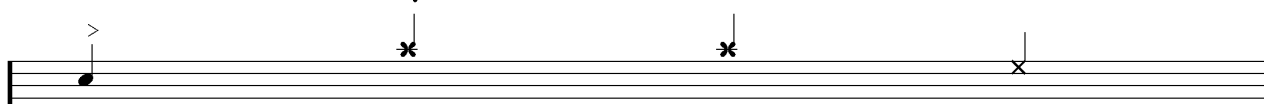


accent

note mutée

crash

cloche

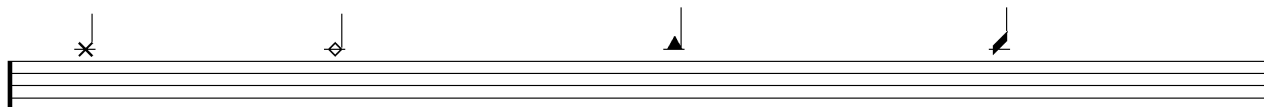


ride

dôme de cymbale

chinoise

splash



flas

note muette

