

Kiss Tears Are Falling:

Table des matières

Introduction:.....2
Tablature basse page 1:.....3
Tablature basse page 2:.....4
Partition basse page 1:.....5
Partition basse page 2:.....6
Partition batterie page 1:.....7
Partition batterie page 2:.....8
Écriture batterie:.....9

Introduction:

Attention! Pour jouer ce morceau (et tous les morceaux du groupe Kiss) il faut descendre toutes les cordes d'un demi-ton: Mib / Lab / Réb / Solb.

La ligne de basse est assez répétitive mais il y a quelques fills dans les aigus qui ne sont pas évidents, les principales difficultés sont les accents, les contretemps, les glissés, les hammers et un passage en doubles-notes pendant le solo de guitare.

Pour la partie de batterie, les grosse difficultés sont les contretemps à la grosse caisse et le fait de doubler la caisse claire avec le tom basse sur les 2ème et 4ème temps de chaque mesure.

Attention ! J'utilise une écriture différente pour la hauteur des toms par rapport aux autres partitions qui sont disponibles sur mon site, consultez l'écriture de la batterie qui est située à la fin de ce dossier.

Voici le lien pour écouter le morceau:

[Kiss Tears Are Falling](#)

Bon courage à tous !

Tablature basse page 1:

Pour jouer ce morceau il faut descendre toutes les cordes d'un demi-ton: Mib / Lab / Réb / Solb.

Kiss Tears are Falling

Intro

1

Intro guitar tab for Kiss Tears are Falling. The piece is in 4/4 time. The first measure shows a sequence of eighth notes on the bass strings: 2, 2, 2, 2, 2, 2. The following three measures contain a double bar line with a slash, indicating a rest.

5

Intro guitar tab for Kiss Tears are Falling (continued). The fourth measure continues the eighth-note sequence. The fifth measure has a 9th fret on the 5th string. The sixth measure has 5ths on the 5th and 4th strings. The seventh measure has 7ths on the 5th, 4th, and 3rd strings.

9

Intro guitar tab for Kiss Tears are Falling (continued). The eighth measure has 5ths on the 5th and 4th strings. The ninth measure has 7ths on the 5th, 4th, and 3rd strings. The tenth measure has 7ths on the 5th, 4th, and 3rd strings.

Couplets 1/2

13

Couplets 1/2 guitar tab for Kiss Tears are Falling. The piece starts with a repeat sign. The first measure has eighth notes 2, 2, 2, 2, 2, 2. The second measure has eighth notes 2, 2, 2, 2, 2, 2. The third measure has eighth notes 7, 7, 7, 7, 7, 7. The fourth measure has eighth notes 7, 7, 7, 7, 7, 7.

17

Couplets 1/2 guitar tab for Kiss Tears are Falling (continued). The fifth measure has eighth notes 2, 2, 2, 2, 2, 2. The sixth measure has eighth notes 2, 2, 2, 2, 2, 2. The seventh measure has eighth notes 7, 7, 7, 7, 7, 7. The eighth measure has eighth notes 7, 7, 7, 7, 6, 6, 4, 4.

21

Couplets 1/2 guitar tab for Kiss Tears are Falling (continued). The ninth measure has eighth notes 2, 2, 2, 2, 2, 2. The tenth measure has eighth notes 2, 2, 2, 2, 2, 2. The eleventh measure has eighth notes 7, 7, 7, 7, 7, 7. The twelfth measure has eighth notes 7, 7, 7, 7, 7, 7.

Pré-Refrains 1/2

25

Pré-Refrains 1/2 guitar tab for Kiss Tears are Falling. The first measure has eighth notes 5, 5, 5, 5, 5, 5. The second measure has eighth notes 5, 5, 5, 5, 5, 5. The third measure has eighth notes 7, 7, 7, 7, 7, 7. The fourth measure has a whole note 16 on the 5th string, followed by a whole note 13 on the 4th string, and a whole note 14 on the 3rd string.

Refrains 1/2

29

Refrains 1/2 guitar tab for Kiss Tears are Falling. The first measure has eighth notes 2, 2, 2, 2, 2, 2. The second measure has eighth notes 2, 2, 2, 2, 2, 2. The third measure has eighth notes 2, 2, 2, 2, 2, 2. The fourth measure has eighth notes 5, 5, 5, 5, 5, 5. The fifth measure has eighth notes 7, 7, 7, 7, 7, 7.

33

Refrains 1/2 guitar tab for Kiss Tears are Falling (continued). The sixth measure has eighth notes 2, 2, 2, 2, 2, 2. The seventh measure has eighth notes 2, 2, 2, 2, 2, 2. The eighth measure has eighth notes 2, 2, 2, 2, 2, 2. The ninth measure has eighth notes 5, 5, 5, 5, 5, 5. The tenth measure has eighth notes 7, 7, 7, 7, 7, 7.

37

Refrains 1/2 guitar tab for Kiss Tears are Falling (continued). The eleventh measure has eighth notes 2, 2, 2, 2, 2, 2. The twelfth measure has eighth notes 2, 2, 2, 2, 2, 2. The thirteenth measure has eighth notes 2, 2, 2, 2, 2, 2. The fourteenth measure has eighth notes 5, 5, 5, 5, 5, 5. The fifteenth measure has eighth notes 7, 7, 7, 7, 7, 7.

Tablature basse page 2:

Pour jouer ce morceau il faut descendre toutes les cordes d'un demi-ton: Mib / Lab / Réb / Solb.

Pont

Musical notation for the 'Pont' section, measures 69-72. The notation is for a bass guitar in 4/4 time, with a key signature of one flat (Bb). The first two measures contain eighth-note patterns: 2 2 2 2 2 2 and 2 2 2 2 2 2. The third measure is a whole rest. The fourth measure contains eighth notes 2 2 2 2 2 2 with an accent (>) over the final note.

Solo Guitare

Musical notation for the 'Solo Guitare' section, measures 73-76. The notation is for a bass guitar in 4/4 time. The first measure contains eighth notes 2 2 2 2 2 2. The following three measures (74-76) are whole rests.

Musical notation for the 'Solo Guitare' section, measures 77-80. The notation is for a bass guitar in 4/4 time. The first measure contains eighth notes 2 2 2 2 2 2. The second measure is a whole rest. The third measure contains eighth notes 7 5 7 5 7 11. The fourth measure contains eighth notes 9 7 9 7 9 9 9 9 7 7 7.

Musical notation for the 'Solo Guitare' section, measures 81-84. The notation is for a bass guitar in 4/4 time. The first measure contains eighth notes 2 2 2 2 2 2. The second and third measures are whole rests. The fourth measure contains eighth notes 2 2 2 7 2.

Pré-Refrain 3

Musical notation for the 'Pré-Refrain 3' section, measures 85-88. The notation is for a bass guitar in 4/4 time. The first measure contains eighth notes 5 5 5 5 5 5. The second measure contains eighth notes 5 5 5 5 4 5. The third measure contains eighth notes 7 7 7 7 7 7. The fourth measure contains eighth notes 0 14 0 13 14 0 0.

Musical notation for the 'Pré-Refrain 3' section, measures 89-92. The notation is for a bass guitar in 4/4 time. The first measure contains eighth notes 5 5 5 5 5 5. The second measure is a whole rest. The third measure contains eighth notes 7 7 7 7 7 7. The fourth measure contains eighth notes 0 7 16 16 13 14 0 0.

Refrain 3

Musical notation for the 'Refrain 3' section, measures 93-96. The notation is for a bass guitar in 4/4 time. The first measure contains eighth notes 2 2 2 2 2 2. The second measure contains eighth notes 2 2 2 2 2 2. The third measure contains eighth notes 5 5 5 5 5 5. The fourth measure contains eighth notes 7 7 7 7 7 7.

Musical notation for the 'Refrain 3' section, measures 97-100. The notation is for a bass guitar in 4/4 time. The first measure contains eighth notes 2 2 2 2 2 2. The second measure contains eighth notes 2 2 2 2 11 6 7. The third measure contains eighth notes 5 5 5 5 5 5. The fourth measure contains eighth notes 7 7 7 7 7 7.

Musical notation for the 'Refrain 3' section, measures 101-104. The notation is for a bass guitar in 4/4 time. The first measure contains eighth notes 2 2 2 2 2 2. The second measure contains eighth notes 2 2 2 11 11 9 7 6. The third measure contains eighth notes 4 5 5 5 5 5 5 5. The fourth measure contains eighth notes 7 7 7 7 5 7 6 7.

Musical notation for the 'Refrain 3' section, measures 105-108. The notation is for a bass guitar in 4/4 time. The first measure contains eighth notes 2 2 2 2 2 2. The second measure contains eighth notes 2 2 2 14 14 12 11 12. The third measure contains eighth notes 5 5 5 5 5 5 5 5. The fourth measure contains eighth notes 7 7 7 7 7 7 7.

ad lib

Musical notation for the 'ad lib' section, measures 109-112. The notation is for a bass guitar in 4/4 time. The first measure contains eighth notes 2 2 2 2 2 2. The second measure contains eighth notes 2 2 2 2 2 2. The third measure contains eighth notes 5 5 5 5 5 5 5 5. The fourth measure contains eighth notes 7 7 7 7 7 7 7.

Partition basse page 1:

Pour jouer ce morceau il faut descendre toutes les cordes d'un demi-ton: Mib / Lab / Réb / Solb.

Kiss Tears are Falling

Intro



1

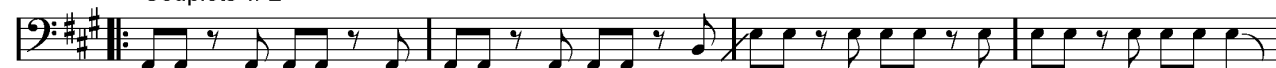


5



9

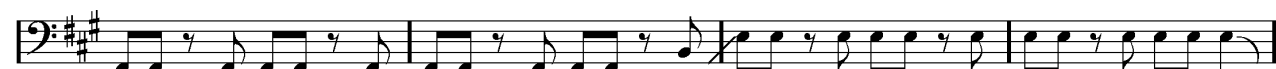
Couplets 1 / 2



13



17



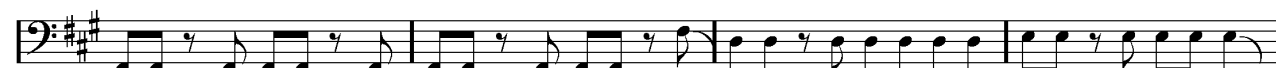
21

Pré-Refrains 1 / 2

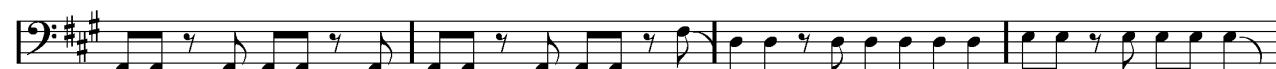


25

Refrains 1 / 2



29



33



37

Partition batterie page 1:

Kiss Tears are Falling

♩ = 126

Intro

1

5

9

Couplets 1 / 2

13

17

21

Pré-Refrains 1 / 2

25

Refrains 1 / 2

29

33

Partition batterie page 2:

37

Musical notation for measure 37, featuring a drum set. The notation includes a snare drum (S) and a bass drum (B). The measure is marked with a star (*) above the first and third notes, and a slash (/) above the fifth note. The notation is written on a single staff with a treble clef and a key signature of one sharp (F#).

Pont

69

Musical notation for measure 69, featuring a drum set. The notation includes a snare drum (S) and a bass drum (B). The measure is marked with a star (*) above the first and third notes, and a slash (/) above the fifth note. The notation is written on a single staff with a treble clef and a key signature of one sharp (F#).

Solo Guitare

73

Musical notation for measure 73, featuring a drum set. The notation includes a snare drum (S) and a bass drum (B). The measure is marked with a star (*) above the first and third notes, and a slash (/) above the fifth note. The notation is written on a single staff with a treble clef and a key signature of one sharp (F#).

77

Musical notation for measure 77, featuring a drum set. The notation includes a snare drum (S) and a bass drum (B). The measure is marked with a star (*) above the first and third notes, and a slash (/) above the fifth note. The notation is written on a single staff with a treble clef and a key signature of one sharp (F#).

81

Musical notation for measure 81, featuring a drum set. The notation includes a snare drum (S) and a bass drum (B). The measure is marked with a star (*) above the first and third notes, and a slash (/) above the fifth note. The notation is written on a single staff with a treble clef and a key signature of one sharp (F#).

Pré-Refrain 3

85

Musical notation for measure 85, featuring a drum set. The notation includes a snare drum (S) and a bass drum (B). The measure is marked with a star (*) above the first and third notes, and a slash (/) above the fifth note. The notation is written on a single staff with a treble clef and a key signature of one sharp (F#).

89

Musical notation for measure 89, featuring a drum set. The notation includes a snare drum (S) and a bass drum (B). The measure is marked with a star (*) above the first and third notes, and a slash (/) above the fifth note. The notation is written on a single staff with a treble clef and a key signature of one sharp (F#).

Refrain 3

93

ad lib.

Musical notation for measure 93, featuring a drum set. The notation includes a snare drum (S) and a bass drum (B). The measure is marked with a star (*) above the first and third notes, and a slash (/) above the fifth note. The notation is written on a single staff with a treble clef and a key signature of one sharp (F#).

Écriture batterie:

bd 1

bd 2

rim-shot

sd

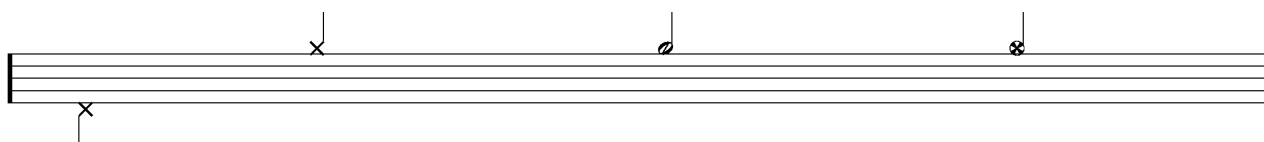


HH Pied

HH fermée

HH entrouverte

HH ouverte

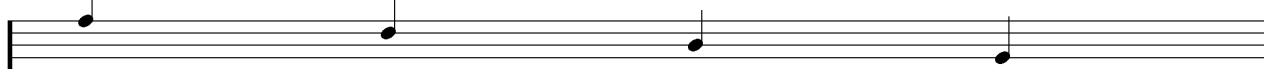


tom 1

tom 2

tom 3

tom 4

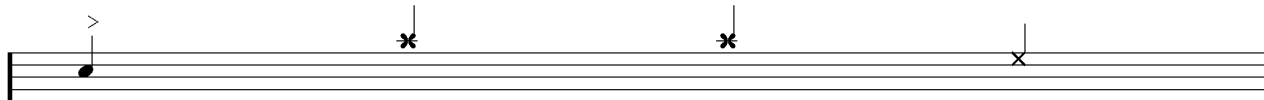


accent

note mutée

crash

cloche

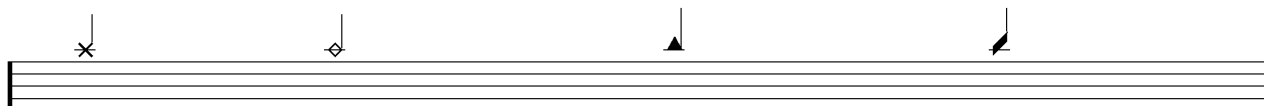


ride

dôme de cymbale

chinoise

splash



flas

note muette

