

**Kiss She:**

**Table des matières**

Introduction:.....	2
Tablature basse page 1:.....	3
Tablature basse page 2:.....	4
Partition basse page 1:.....	5
Partition basse page 2:.....	6
Partition batterie version 1 page 1:.....	7
Partition batterie version 1 page 2:.....	8
Partition batterie version 2 page 1:.....	9
Partition batterie version 2 page 2:.....	10
Écriture batterie:.....	11

### **Introduction:**

**Attention! Pour jouer ce morceau (et tous les morceaux du groupe Kiss) il faut descendre toutes les cordes d'un demi-ton: Mib / Lab / Réb / Solb.**

Les plus grosses difficultés de cette ligne de basse sont les contretemps, les glissés, les hammers, les notes courtes, les notes muettes, les syncopes et les trémolos.

Pour la partition il y a 1 bémol à la clef: le Sib.

Une partie de batterie très intéressante à jouer avec pas mal de parties différentes, les difficultés sont les suivantes: il y a beaucoup de contretemps à la grosse caisse, des flas, des accents sur les toms pendant les ponts 2 et 3 et pendant le solo de guitare, il y a également plusieurs breaks en sextolets qui pourraient poser des problèmes aux plus débutants même si le tempo du morceau est relativement lent. **Attention ! J'utilise une écriture différente pour la hauteur des toms par rapport aux autres partitions qui sont disponibles sur mon site, consultez l'écriture de la batterie qui est située à la fin de ce dossier.**

J'ai écrit deux versions pour la batterie:

- Dans la première version vous jouez le morceau en vous servant uniquement de la cymbale charleston.
- Dans la seconde version vous jouez le morceau en alternant la cymbale charleston et la cloche à condition que cette dernière soit installée très près de la charley dans votre kit.

Voici le lien pour écouter le morceau:

[Kiss She](#)

Bon courage à tous !



## Tablature basse page 2:

**Pour jouer ce morceau il faut descendre toutes les cordes d'un demi-ton: Mib / Lab / Réb / Solb.**

### Pont 2

51



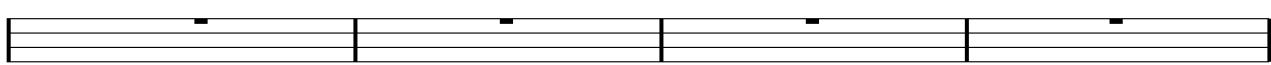
### Solo guitare

59




### Pont 3

67



71



### Refrain 3

75



### ad lib. Final

80

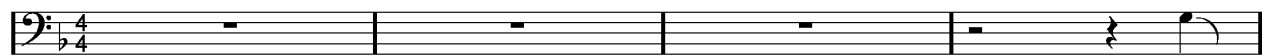


## Partition basse page 1:

Pour jouer ce morceau il faut descendre toutes les cordes d'un demi-ton: Mib / Lab / Réb / Solb.

### Kiss She

#### Intro Guitare



1

#### Intro



5



9

#### Couplets 1 / 2



13



17

#### Refrains 1 / 2



21

#### Instrumental 1 / 2



25



41



43

#### Pont 1



47

## Partition basse page 2:

Pour jouer ce morceau il faut descendre toutes les cordes d'un demi-ton: Mib / Lab / Réb / Solb.

Pont 2

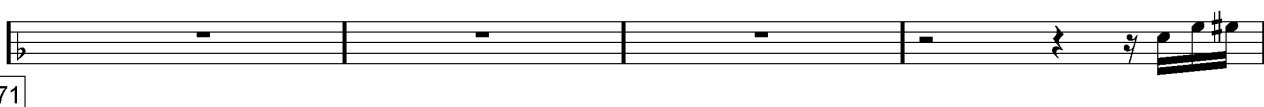
51 

Solo guitare

59 

Pont 3

67 

71 

Refrain 3

75 

ad lib. Final

80 

**Partition batterie version 1 page 1:**

♩ = 83

**Kiss She**

**Intro Guitare**

Musical notation for the Intro Guitare section, measures 1 to 4. The notation is on a single staff with a treble clef and a 4/4 time signature. It features a series of eighth and sixteenth notes, with some rests. A box with the number '1' is located at the beginning of the first measure.

**Intro**

Musical notation for the Intro section, measures 5 to 8. The notation is on a single staff with a treble clef and a 4/4 time signature. It features a complex rhythmic pattern with many eighth and sixteenth notes, including some beamed notes. A box with the number '5' is located at the beginning of the first measure.

Musical notation for the Intro section, measures 9 to 12. The notation is on a single staff with a treble clef and a 4/4 time signature. It continues the complex rhythmic pattern from the previous measures. A box with the number '9' is located at the beginning of the first measure.

**Couplet 1**

Musical notation for Couplet 1, measures 13 to 16. The notation is on a single staff with a treble clef and a 4/4 time signature. It features a rhythmic pattern with eighth and sixteenth notes. A box with the number '13' is located at the beginning of the first measure. The notation ends with a double bar line and repeat dots.

Musical notation for Couplet 1, measures 17 to 20. The notation is on a single staff with a treble clef and a 4/4 time signature. It continues the rhythmic pattern from the previous measures. A box with the number '17' is located at the beginning of the first measure. The notation ends with a double bar line and repeat dots.

**Refrain 1**

Musical notation for Refrain 1, measures 21 to 24. The notation is on a single staff with a treble clef and a 4/4 time signature. It features a rhythmic pattern with eighth and sixteenth notes, including some beamed notes. A box with the number '21' is located at the beginning of the first measure. The notation ends with a double bar line and repeat dots.

**Instrumental 1**

Musical notation for Instrumental 1, measures 25 to 26. The notation is on a single staff with a treble clef and a 4/4 time signature. It features a rhythmic pattern with eighth and sixteenth notes. A box with the number '25' is located at the beginning of the first measure. The notation ends with a double bar line and repeat dots.

**Couplet 2**

Musical notation for Couplet 2, measures 27 to 30. The notation is on a single staff with a treble clef and a 4/4 time signature. It features a rhythmic pattern with eighth and sixteenth notes. A box with the number '27' is located at the beginning of the first measure. The notation ends with a double bar line and repeat dots.

Musical notation for Couplet 2, measures 31 to 34. The notation is on a single staff with a treble clef and a 4/4 time signature. It continues the rhythmic pattern from the previous measures. A box with the number '31' is located at the beginning of the first measure. The notation ends with a double bar line and repeat dots.

Partition batterie version 1 page 2:

Refrain 2

35

Musical notation for Refrain 2, measures 35-42. The notation includes a complex rhythmic pattern with many 'x' marks, indicating specific drum hits. There are triplets of eighth notes in measures 40 and 41.

Instrumental 2

39

Musical notation for Instrumental 2, measures 39-42. The notation shows a rhythmic pattern with 'x' marks and a double bar line at the end of the section.

43

Musical notation for Instrumental 2, measures 43-46. The notation shows a rhythmic pattern with 'x' marks and a double bar line at the end of the section.

Pont 1

47

Musical notation for Pont 1, measures 47-50. The notation shows a rhythmic pattern with 'x' marks and a double bar line at the end of the section.

Pont 2

51

Musical notation for Pont 2, measures 51-54. The notation shows a rhythmic pattern with 'x' marks and a double bar line at the end of the section.

Pont 2 (suite) / Solo guitare

55

Musical notation for Pont 2 (suite) / Solo guitare, measures 55-58. The notation shows a rhythmic pattern with 'x' marks and a double bar line at the end of the section.

Pont 3

67

Musical notation for Pont 3, measures 67-74. The notation shows a rhythmic pattern with 'x' marks and a double bar line at the end of the section.

Refrain 3

75

Musical notation for Refrain 3, measures 75-77. The notation shows a rhythmic pattern with 'x' marks.

78

Musical notation for Refrain 3, measures 78-80. The notation shows a rhythmic pattern with 'x' marks and triplets of eighth notes.

Final

80

Musical notation for Final, measures 80-83. The notation shows a rhythmic pattern with 'x' marks and triplets of eighth notes.



**Partition batterie version 2 page 1:**

♩ = 83

**Kiss She**

**Intro Guitare**

Musical notation for the Intro Guitare section, measures 1 to 4. The notation is on a single staff with a treble clef and a 4/4 time signature. It features a series of eighth and sixteenth notes, with some rests. A box with the number '1' is located at the beginning of the first measure.

**Intro**

Musical notation for the Intro section, measures 5 to 8. The notation is on a single staff with a treble clef and a 4/4 time signature. It features a complex rhythmic pattern with many eighth and sixteenth notes, including some beamed notes. A box with the number '5' is located at the beginning of the first measure.

Musical notation for the Intro section, measures 9 to 12. The notation is on a single staff with a treble clef and a 4/4 time signature. It continues the complex rhythmic pattern from the previous measures. A box with the number '9' is located at the beginning of the first measure.

**Couplet 1**

Musical notation for Couplet 1, measures 13 to 16. The notation is on a single staff with a treble clef and a 4/4 time signature. It features a rhythmic pattern with eighth and sixteenth notes. A box with the number '13' is located at the beginning of the first measure. The notation ends with a double bar line and repeat signs.

Musical notation for Couplet 1, measures 17 to 20. The notation is on a single staff with a treble clef and a 4/4 time signature. It continues the rhythmic pattern from the previous measures. A box with the number '17' is located at the beginning of the first measure. The notation ends with a double bar line and repeat signs.

**Refrain 1**

Musical notation for Refrain 1, measures 21 to 24. The notation is on a single staff with a treble clef and a 4/4 time signature. It features a rhythmic pattern with eighth and sixteenth notes, including some beamed notes. A box with the number '21' is located at the beginning of the first measure.

**Instrumental 1**

Musical notation for Instrumental 1, measures 25 to 26. The notation is on a single staff with a treble clef and a 4/4 time signature. It features a rhythmic pattern with eighth and sixteenth notes. A box with the number '25' is located at the beginning of the first measure.

**Couplet 2**

Musical notation for Couplet 2, measures 27 to 30. The notation is on a single staff with a treble clef and a 4/4 time signature. It features a rhythmic pattern with eighth and sixteenth notes. A box with the number '27' is located at the beginning of the first measure. The notation ends with a double bar line and repeat signs.

Musical notation for Couplet 2, measures 31 to 34. The notation is on a single staff with a treble clef and a 4/4 time signature. It continues the rhythmic pattern from the previous measures. A box with the number '31' is located at the beginning of the first measure. The notation ends with a double bar line and repeat signs.

Partition batterie version 2 page 2:

Refrain 2

35

Instrumental 2

39

43

Pont 1

47

Pont 2

51

Pont 2 (suite) / Solo guitare

55

Pont 3

67

Refrain 3

75

78

Final

80

## Écriture batterie:

bd 1                      bd 2                      rim-shot                      sd

HH Pied                      HH fermée                      HH entrouverte                      HH ouverte

tom 1                      tom 2                      tom 3                      tom 4

accent                      note mutée                      crash                      cloche

ride                      dôme de cymbale                      chinoise                      splash

fla                      note muette

The image displays six horizontal musical staves, each representing a different drum component. Above each staff are labels in French. The notation on the staves includes various symbols: vertical stems with dots for snare and tom hits, stems with 'x' for closed and open hi-hats, stems with '>' for accents, stems with a dot and 'x' for muted notes, stems with 'x' for crashes, stems with a triangle for Chinese cymbals, stems with a diamond for cymbal domes, stems with a triangle for splash cymbals, and stems with a horizontal line for flambé. The first staff shows four notes for snare drums (bd 1, bd 2, rim-shot, sd). The second staff shows four notes for hi-hats (HH Pied, HH fermée, HH entrouverte, HH ouverte). The third staff shows four notes for toms (tom 1, tom 2, tom 3, tom 4). The fourth staff shows four notes for accents, muted notes, crashes, and cloches. The fifth staff shows four notes for ride, cymbal dome, Chinese cymbal, and splash. The sixth staff shows two notes for flambé and a muted note.