

## Kiss Lick It Up:

### **Table des matières**

Introduction:.....	2
Tablature basse page 1:.....	3
Tablature basse page 2:.....	4
Partition basse page 1:.....	5
Partition basse page 2:.....	6
Partition batterie page 1:.....	7
Partition batterie page 2:.....	8
Écriture batterie:.....	9

### **Introduction:**

Une partie de basse relativement facile, les seules difficultés sont les accents, les contretemps, les glissés et les syncopes.

Pour la partition de basse il y a 1 dièse à la clef: le Fa#.

La partie de batterie est très facile également, les seules difficultés sont les contretemps en doubles-croches à la grosse caisse à la fin du passage instrumental et deux breaks en doubles-croches.

Voici le lien pour écouter le morceau:

[Kiss Lick It Up](#)

Bon courage à tous !

# Tablature basse page 1:

## Kiss Lick It Up

Intro

1 2

Couplet 1

6

Pré-Refrain 1

14

18

3x Refrain 1

22

34

Instrumental

38

Couplet 2

42

Pré-Refrain 2

50

54

Refrain 2

58

**Tablature basse page 2:**

62

62

66

66

70

70

Pont 1

74

74

Pont 2

82

82

86

86

90

90

Refrain 3

93

93

97

97

101

101

ad lib. Final

105

105



## Partition basse page 2:

62

66

70

Pont 1  
74

Pont 2  
82

86

90

Refrain 3  
93

97

101

ad lib. Final  
105

# Partition batterie page 1:

## Kiss Lick It Up

♩ = 120

Intro

Musical notation for the Intro section, measures 1-5. Measure 1 starts with a double bar line and a repeat sign. Measure 2 has a '2' in a box below it. The notation shows a drum set with a snare drum and a kick drum. The snare drum has a series of eighth notes with 'x' marks above them, and the kick drum has a series of eighth notes below them. Measures 3, 4, and 5 are marked with a double bar line and a repeat sign.

§ Couplets 1 / 2 Crash 2ème fois seulement

Musical notation for Couplets 1 / 2, measures 6-9. Measure 6 has a '\*' in a box below it. The notation shows a drum set with a snare drum and a kick drum. The snare drum has a series of eighth notes with 'x' marks above them, and the kick drum has a series of eighth notes below them. Measures 7, 8, and 9 are marked with a double bar line and a repeat sign.

Pré-Refrains 1 / 2

Musical notation for Pré-Refrains 1 / 2, measures 10-13. Measure 10 has a '\*' in a box below it. The notation shows a drum set with a snare drum and a kick drum. The snare drum has a series of eighth notes with 'x' marks above them, and the kick drum has a series of eighth notes below them. Measures 11, 12, and 13 are marked with a double bar line and a repeat sign.

Musical notation for Pré-Refrains 1 / 2, measures 14-17. Measure 14 has a '\*' in a box below it. The notation shows a drum set with a snare drum and a kick drum. The snare drum has a series of eighth notes with 'x' marks above them, and the kick drum has a series of eighth notes below them. Measures 15, 16, and 17 are marked with a double bar line and a repeat sign.

Refrains 1 / 2

3ème fois  
du refrain 2 = ⊕

Musical notation for Refrains 1 / 2, measures 18-21. Measure 18 has a '\*' in a box below it. The notation shows a drum set with a snare drum and a kick drum. The snare drum has a series of eighth notes with 'x' marks above them, and the kick drum has a series of eighth notes below them. Measures 19, 20, and 21 are marked with a double bar line and a repeat sign.

Musical notation for Refrains 1 / 2, measures 22-25. Measure 22 has a '\*' in a box below it. The notation shows a drum set with a snare drum and a kick drum. The snare drum has a series of eighth notes with 'x' marks above them, and the kick drum has a series of eighth notes below them. Measures 23, 24, and 25 are marked with a double bar line and a repeat sign.

Instrumental

Musical notation for Instrumental section, measures 26-37. Measure 26 has a '\*' in a box below it. The notation shows a drum set with a snare drum and a kick drum. The snare drum has a series of eighth notes with 'x' marks above them, and the kick drum has a series of eighth notes below them. Measures 27, 28, 29, 30, 31, 32, 33, 34, 35, 36, and 37 are marked with a double bar line and a repeat sign.

⊕ Refrain 2 (suite)

Musical notation for Refrain 2 (suite), measures 38-69. Measure 38 has a '\*' in a box below it. The notation shows a drum set with a snare drum and a kick drum. The snare drum has a series of eighth notes with 'x' marks above them, and the kick drum has a series of eighth notes below them. Measures 39, 40, 41, 42, 43, 44, 45, 46, 47, 48, 49, 50, 51, 52, 53, 54, 55, 56, 57, 58, 59, 60, 61, 62, 63, 64, 65, 66, 67, 68, and 69 are marked with a double bar line and a repeat sign.

70

## Partition batterie page 2:

### Pont 1

74

78

### Pont 2

82

86

90

### Refrain 3

93

### Final

105



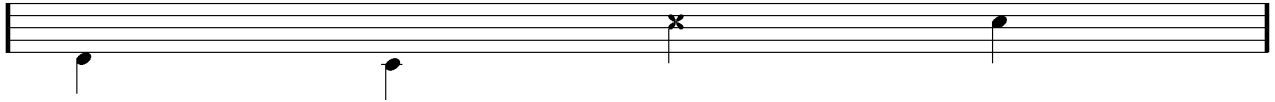
## Écriture batterie:

bd 1

bd 2

rim-shot

sd

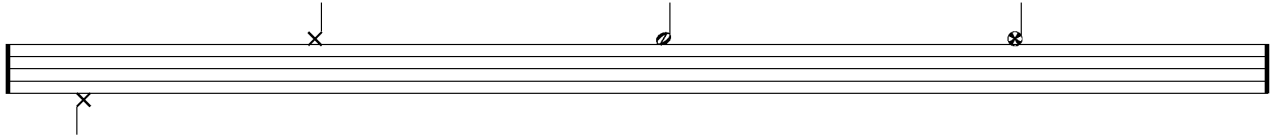


HH Pied

HH fermée

HH entrouverte

HH ouverte

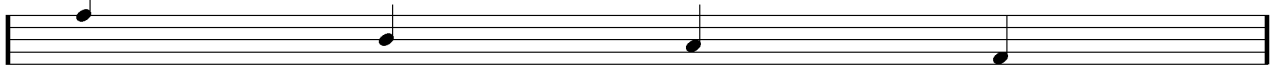


tom 1

tom 2

tom 3

tom 4

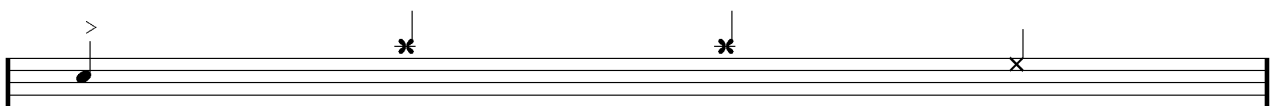


accent

note mutée

crash

cloche

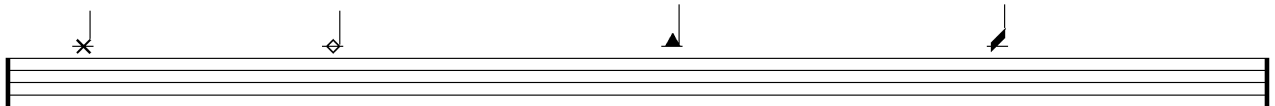


ride

dôme de cymbale

chinoise

splash



flas

note muette

