

Kiss Christine Sixteen:

Table des matières

Introduction:.....	2
Tablature basse page 1:.....	3
Tablature basse page 2:.....	4
Partition basse page 1:.....	5
Partition basse page 2:.....	6
Partition batterie page 1:.....	7
Partition batterie page 2:.....	8
Partition batterie page 3:.....	9
Écriture batterie:.....	10

Introduction:

Attention! Pour jouer ce morceau (et tous les morceaux du groupe Kiss) il faut descendre toutes les cordes d'un demi-ton: Mib / Lab / Réb / Solb.

La partie de basse contient beaucoup de syncopes et de contretemps, il y a également quelques accents et des glissés (c'est pratiquement systématique dans les lignes de basse de Kiss). Exceptionnellement il y a également quelques bends à effectuer.

Pour la batterie les grosses difficultés sont le placement rythmique de la grosse caisse en contretemps et de la cymbale crash en syncopes, il y a également quelques breaks en doubles-croches. Pensez à muter la cymbale crash sur le premier temps du pont 2.

Voici le lien pour écouter le morceau:

[Kiss Christine Sixteen](#)

Bon courage à tous !

Tablature basse page 1:

Pour jouer ce morceau il faut descendre toutes les cordes d'un demi-ton: Mib / Lab / Réb / Solb.

Kiss Christine Sixteen

Intro

Intro guitar tablature for the first two measures. Measure 1 starts with a whole rest on the top string and a quarter note on the bottom string. Measure 2 has a quarter note on the bottom string, a quarter rest, and a quarter note on the bottom string. A double bar line with a repeat sign follows.

Intro guitar tablature for measures 3 and 4. Measure 3 has a quarter note on the bottom string, a quarter rest, and a quarter note on the bottom string. Measure 4 has a quarter note on the bottom string, a quarter rest, and a quarter note on the bottom string. A double bar line with a repeat sign follows.

Intro guitar tablature for measures 5, 6, 7, and 8. Measure 5 has a quarter note on the bottom string, a quarter rest, and a quarter note on the bottom string. Measure 6 has a quarter note on the bottom string, a quarter rest, and a quarter note on the bottom string. Measure 7 has a quarter note on the bottom string, a quarter rest, and a quarter note on the bottom string. Measure 8 has a quarter note on the bottom string, a quarter rest, and a quarter note on the bottom string. A double bar line with a repeat sign follows.

Couplets 1 / 2

Couplets 1 / 2 guitar tablature for measures 12, 13, 14, and 15. Measure 12 has a quarter note on the bottom string, a quarter rest, and a quarter note on the bottom string. Measure 13 has a quarter note on the bottom string, a quarter rest, and a quarter note on the bottom string. Measure 14 has a quarter note on the bottom string, a quarter rest, and a quarter note on the bottom string. Measure 15 has a quarter note on the bottom string, a quarter rest, and a quarter note on the bottom string. A double bar line with a repeat sign follows.

12 note sur le 1er temps
seulement sur le le 1er couplet

Couplets 1 / 2 guitar tablature for measures 16, 17, 18, and 19. Measure 16 has a quarter note on the bottom string, a quarter rest, and a quarter note on the bottom string. Measure 17 has a quarter note on the bottom string, a quarter rest, and a quarter note on the bottom string. Measure 18 has a quarter note on the bottom string, a quarter rest, and a quarter note on the bottom string. Measure 19 has a quarter note on the bottom string, a quarter rest, and a quarter note on the bottom string. A double bar line with a repeat sign follows.

Refrains 1 / 2

Refrains 1 / 2 guitar tablature for measures 20, 21, 22, and 23. Measure 20 has a quarter note on the bottom string, a quarter rest, and a quarter note on the bottom string. Measure 21 has a quarter note on the bottom string, a quarter rest, and a quarter note on the bottom string. Measure 22 has a quarter note on the bottom string, a quarter rest, and a quarter note on the bottom string. Measure 23 has a quarter note on the bottom string, a quarter rest, and a quarter note on the bottom string. A double bar line with a repeat sign follows.

20 glissé 1/4 ton

Refrains 1 / 2 guitar tablature for measures 24, 25, 26, and 27. Measure 24 has a quarter note on the bottom string, a quarter rest, and a quarter note on the bottom string. Measure 25 has a quarter note on the bottom string, a quarter rest, and a quarter note on the bottom string. Measure 26 has a quarter note on the bottom string, a quarter rest, and a quarter note on the bottom string. Measure 27 has a quarter note on the bottom string, a quarter rest, and a quarter note on the bottom string. A double bar line with a repeat sign follows.

glissés

Solo Guitare

Solo Guitare guitar tablature for measures 44, 45, 46, and 47. Measure 44 has a quarter note on the bottom string, a quarter rest, and a quarter note on the bottom string. Measure 45 has a quarter note on the bottom string, a quarter rest, and a quarter note on the bottom string. Measure 46 has a quarter note on the bottom string, a quarter rest, and a quarter note on the bottom string. Measure 47 has a quarter note on the bottom string, a quarter rest, and a quarter note on the bottom string. A double bar line with a repeat sign follows.

44

Solo Guitare guitar tablature for measures 48, 49, 50, and 51. Measure 48 has a quarter note on the bottom string, a quarter rest, and a quarter note on the bottom string. Measure 49 has a quarter note on the bottom string, a quarter rest, and a quarter note on the bottom string. Measure 50 has a quarter note on the bottom string, a quarter rest, and a quarter note on the bottom string. Measure 51 has a quarter note on the bottom string, a quarter rest, and a quarter note on the bottom string. A double bar line with a repeat sign follows.

48

Pont 1

Pont 1 guitar tablature for measures 52, 53, 54, and 55. Measure 52 has a quarter note on the bottom string, a quarter rest, and a quarter note on the bottom string. Measure 53 has a quarter note on the bottom string, a quarter rest, and a quarter note on the bottom string. Measure 54 has a quarter note on the bottom string, a quarter rest, and a quarter note on the bottom string. Measure 55 has a quarter note on the bottom string, a quarter rest, and a quarter note on the bottom string. A double bar line with a repeat sign follows.

52

glissé

Tablature basse page 2:

Pour jouer ce morceau il faut descendre toutes les cordes d'un demi-ton: Mib / Lab / Réb / Solb.

56

T
A
B

60

Refrain 3

glissés

64

glissé 1/4 ton

68

Pont 2

72

Refrain 4

glissés

76

ad lib. Final

Partition basse page 1:

Pour jouer ce morceau il faut descendre toutes les cordes d'un demi-ton: Mib / Lab / Réb / Solb.

Kiss Christine Sixteen

Intro

1 2

4

8

12

Couplets 1 / 2

note sur le 1er temps
seulement sur le 1er couplet

16

20

Refrains 1 / 2

glissé 1/4 ton
glissés

24

44

Solo Guitare

48

52


Pont 1

glissé

Partition basse page 2:

Pour jouer ce morceau il faut descendre toutes les cordes d'un demi-ton: Mib / Lab / Réb / Solb.

56



60

Refrain 3

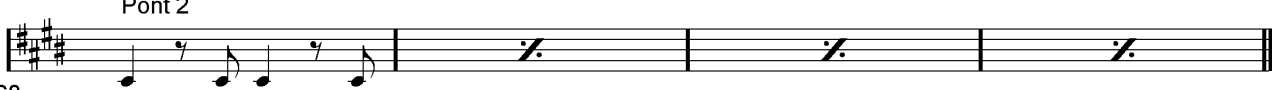


64



68

Pont 2



72

Refrain 4



76

ad lib. Final




Partition batterie page 1:

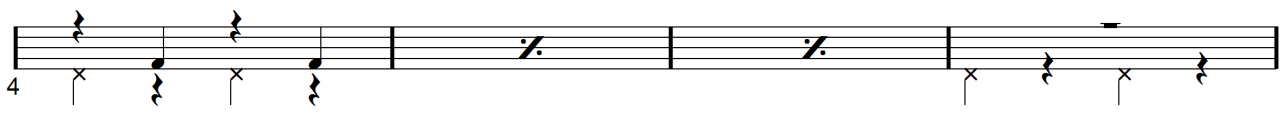
Kiss Christine Sixteen

Intro

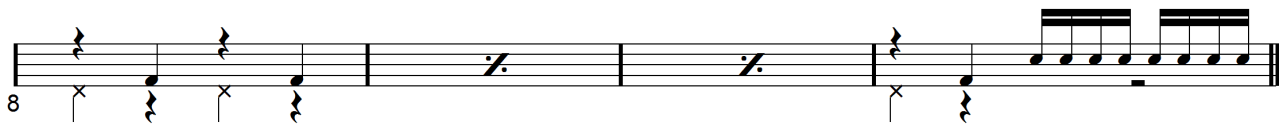
1 2



4

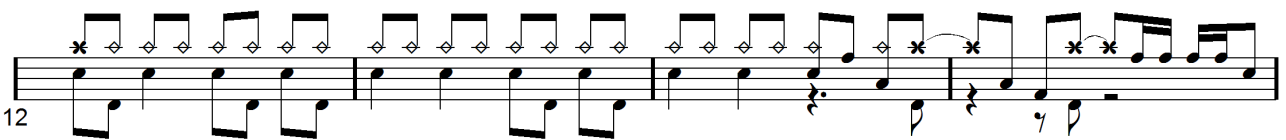


8

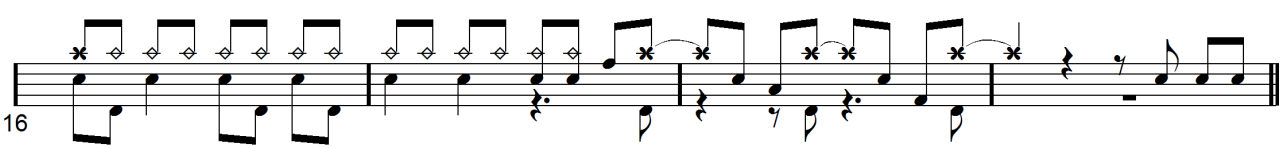


Couplet 1

12

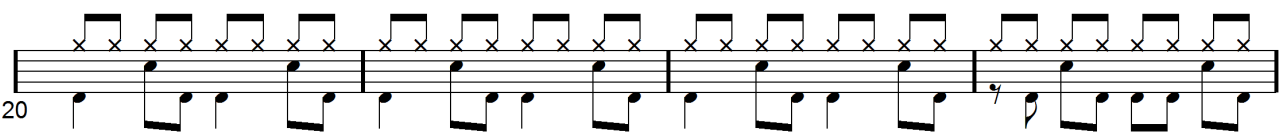


16

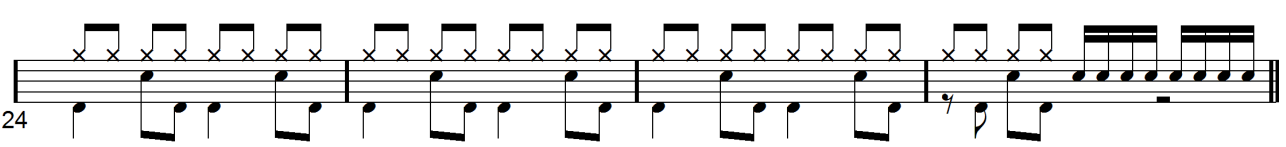


Refrain 1

20

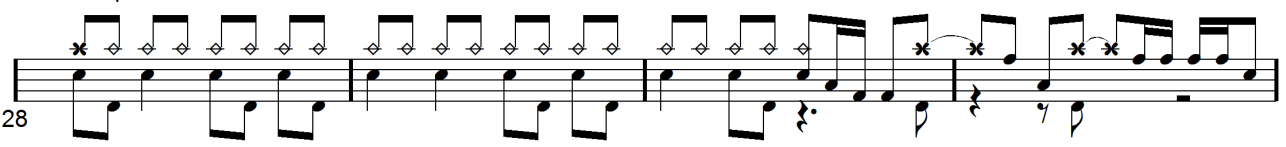


24



Couplet 2

28



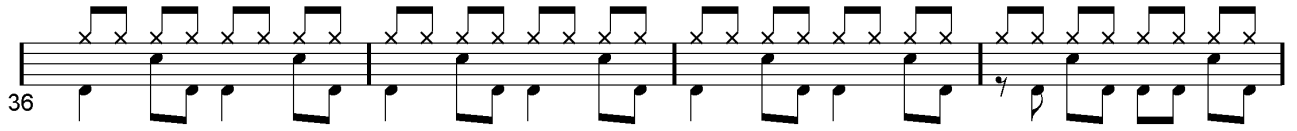
Partition batterie page 2:

32

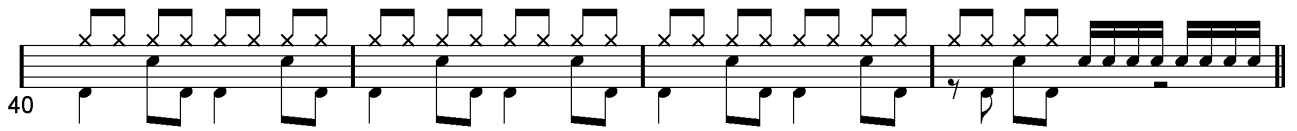


Refrain 2

36

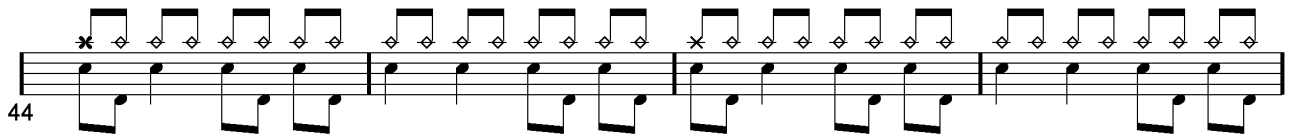


40

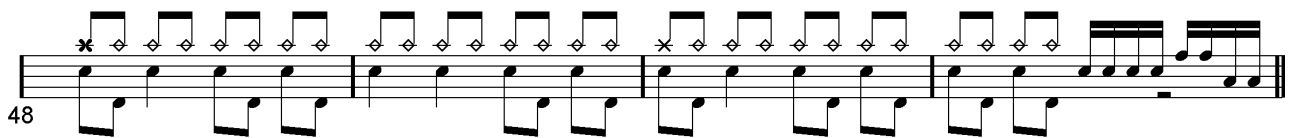


Solo Guitare

44

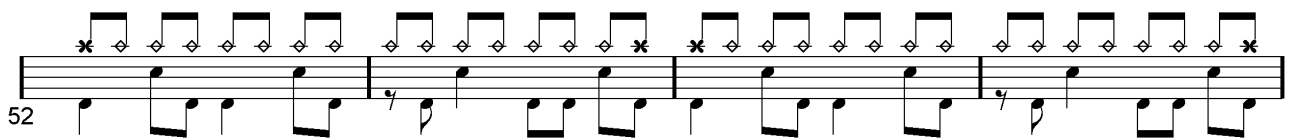


48

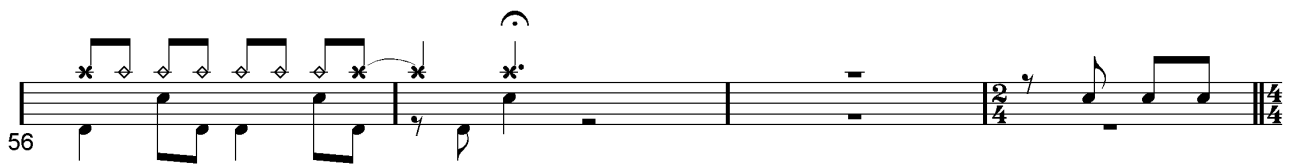


Pont 1

52

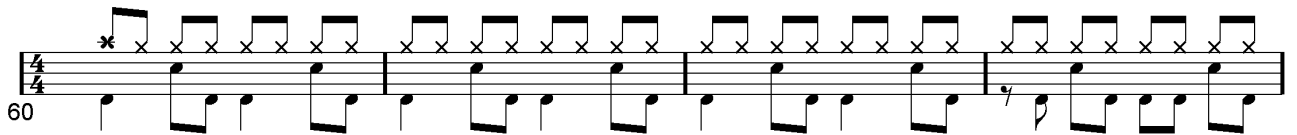


56



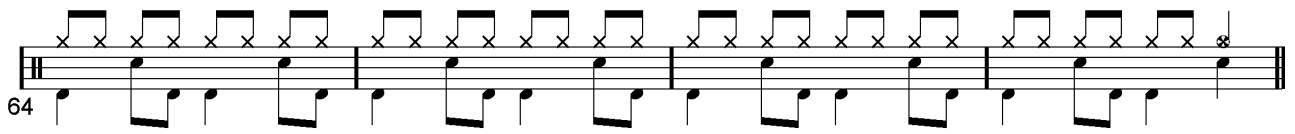
Refrain 3

60



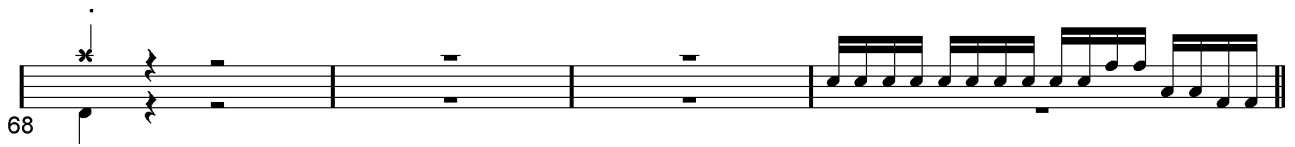
Partition batterie page 3:

64



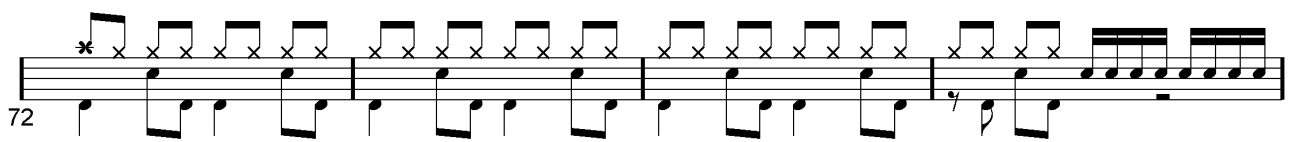
Pont 2

68



Refrain 4

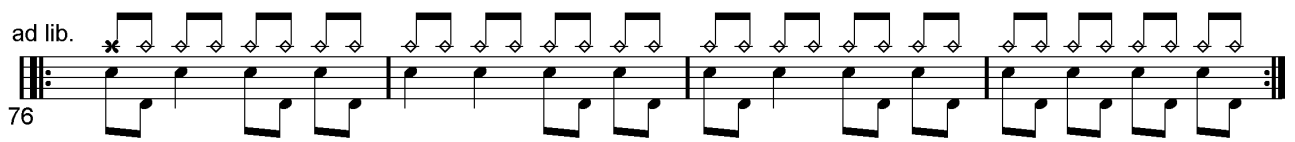
72



Final

ad lib.

76



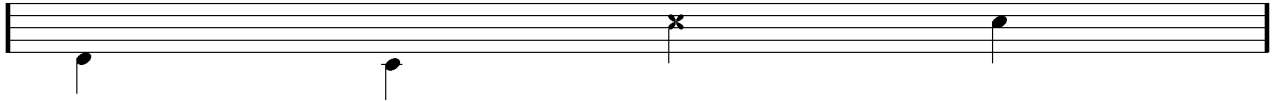
Écriture batterie:

bd 1

bd 2

rim-shot

sd

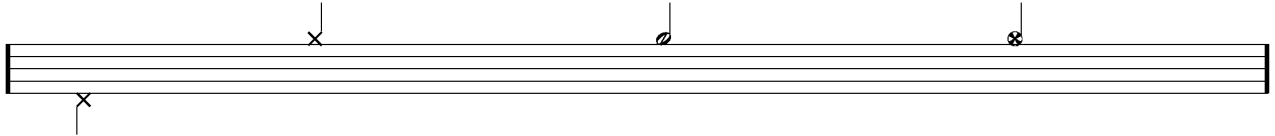


HH Pied

HH fermée

HH entrouverte

HH ouverte

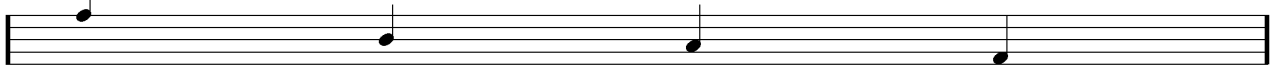


tom 1

tom 2

tom 3

tom 4

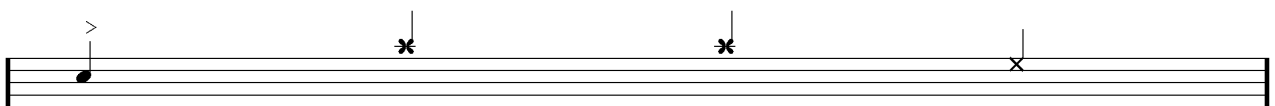


accent

note mutée

crash

cloche

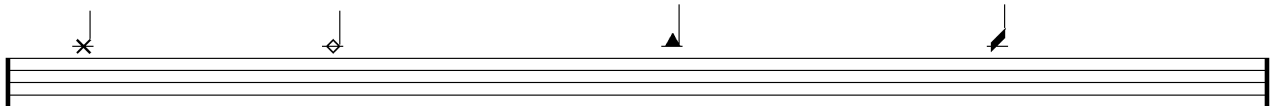


ride

dôme de cymbale

chinoise

splash



flas

note muette

