

**Julien Clerc Hélène:**

**Table des matières**

Introduction:.....2  
Tablature basse page 1:.....3  
Tablature basse page 2:.....4  
Partition basse page 1:.....5  
Partition basse page 2:.....6  
Partition batterie page 1:.....7  
Partition batterie page 2:.....8  
Écriture batterie:.....9

### **Introduction:**

**Pour les 2 instruments attention ! Il faut jouer les croches sur un rythme ternaire.**

Une ligne de basse répétitive mais la mise en place rythmique n'est pas facile. les difficultés sont les contretemps et la note courte jouée à la fin des deux ponts (notes écrites avec un point en dessous).

Pour la partition de basse il y a 5 dièses à la clef: le Fa#, le Do#, le Sol#, le Ré# et le La#.

Pour jouer ce morceau à la batterie, il est impératif d'avoir une cloche fixée au dessus de la cymbale charleston, la grosse difficulté c'est le placement rythmique des toms pendant les breaks sur l'avant dernière mesure des deux ponts (triolet de noires).

Voici le lien pour écouter le morceau:

[Julien Clerc Hélène](#)

Bon courage à tous !



**Tablature basse page 2:**

58

Refrain 3

62

66

Pont 2

70

74

Couplet 5

79

83

ad lib. Refrain 4

87

91

**Partition basse page 1:**

Julien Clerc hélène

Intro

1

The Intro section consists of four measures in bass clef, 4/4 time, with a key signature of three sharps (F#, C#, G#). The melody starts with a quarter rest, followed by quarter notes G#2, A2, B2, and C3. The second measure has quarter notes D3, E3, F#3, and G3. The third measure has quarter notes A3, B3, C4, and D4. The fourth measure has quarter notes E4, F#4, G4, and A4. The piece ends with a double bar line.

Couplet 1

5

The first line of Couplet 1 contains measures 5-8. Measure 5: quarter rest, quarter note G#2, quarter note A2, quarter note B2. Measure 6: quarter note C3, quarter note D3, quarter note E3, quarter note F#3. Measure 7: quarter note G3, quarter note A3, quarter note B3, quarter note C4. Measure 8: quarter note D4, quarter note E4, quarter note F#4, quarter note G4. The piece ends with a double bar line.

9

The second line of Couplet 1 contains measures 9-12. Measure 9: quarter note A4, quarter note B4, quarter note C5, quarter note D5. Measure 10: quarter note E5, quarter note F#5, quarter note G5, quarter note A5. Measure 11: quarter note B5, quarter note C6, quarter note D6, quarter note E6. Measure 12: quarter note F#6, quarter note G6, quarter note A6, quarter note B6. The piece ends with a double bar line.

Couplets 2 / 3

13

The first line of Couplet 2 contains measures 13-16. Measure 13: quarter rest, quarter note G#2, quarter note A2, quarter note B2. Measure 14: quarter note C3, quarter note D3, quarter note E3, quarter note F#3. Measure 15: quarter note G3, quarter note A3, quarter note B3, quarter note C4. Measure 16: quarter note D4, quarter note E4, quarter note F#4, quarter note G4. The piece ends with a double bar line.

17

The second line of Couplet 2 contains measures 17-20. Measure 17: quarter note A4, quarter note B4, quarter note C5, quarter note D5. Measure 18: quarter note E5, quarter note F#5, quarter note G5, quarter note A5. Measure 19: quarter note B5, quarter note C6, quarter note D6, quarter note E6. Measure 20: quarter note F#6, quarter note G6, quarter note A6, quarter note B6. The piece ends with a double bar line.

Refrains 1 / 2

21

The first line of Refrain 1 contains measures 21-24. Measure 21: quarter note G#2, quarter note A2, quarter note B2, quarter note C3. Measure 22: quarter note D3, quarter note E3, quarter note F#3, quarter note G3. Measure 23: quarter note A3, quarter note B3, quarter note C4, quarter note D4. Measure 24: quarter note E4, quarter note F#4, quarter note G4, quarter note A4. The piece ends with a double bar line.

25

The second line of Refrain 1 contains measures 25-28. Measure 25: quarter note B4, quarter note C5, quarter note D5, quarter note E5. Measure 26: quarter note F#5, quarter note G5, quarter note A5, quarter note B5. Measure 27: quarter note C6, quarter note D6, quarter note E6, quarter note F#6. Measure 28: quarter note G6, quarter note A6, quarter note B6, quarter note C7. The piece ends with a double bar line.

Pont 1

45

The first line of Pont 1 contains measures 45-48. Measure 45: quarter note G#2, quarter note A2, quarter note B2, quarter note C3. Measure 46: quarter note D3, quarter note E3, quarter note F#3, quarter note G3. Measure 47: quarter note A3, quarter note B3, quarter note C4, quarter note D4. Measure 48: quarter note E4, quarter note F#4, quarter note G4, quarter note A4. The piece ends with a double bar line.

49

The second line of Pont 1 contains measures 49-52. Measure 49: quarter note B4, quarter note C5, quarter note D5, quarter note E5. Measure 50: quarter note F#5, quarter note G5, quarter note A5, quarter note B5. Measure 51: quarter note C6, quarter note D6, quarter note E6, quarter note F#6. Measure 52: quarter note G6, quarter note A6, quarter note B6, quarter note C7. The piece ends with a double bar line.

Couplet 3

54

The first line of Couplet 3 contains measures 53-56. Measure 53: quarter rest, quarter note G#2, quarter note A2, quarter note B2. Measure 54: quarter note C3, quarter note D3, quarter note E3, quarter note F#3. Measure 55: quarter note G3, quarter note A3, quarter note B3, quarter note C4. Measure 56: quarter note D4, quarter note E4, quarter note F#4, quarter note G4. The piece ends with a double bar line.

**Partition basse page 2:**

58

Refrain 3  
62

66

Pont 2  
70

74

Couplet 5  
79

83

ad lib. Refrain 4  
87

91

# Partition batterie page 1:

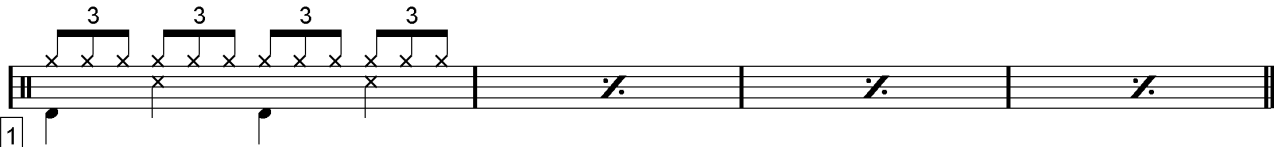
Julien Clerc hélène

♩ = 123

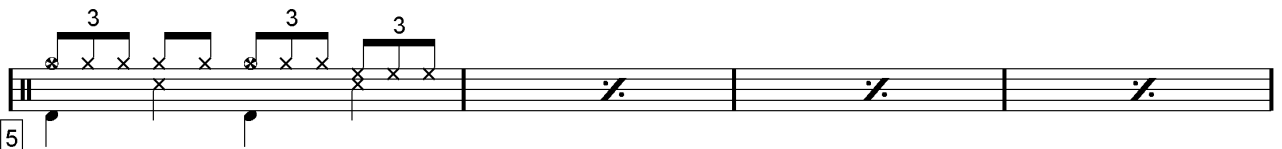
Break



Intro



Couplet 1



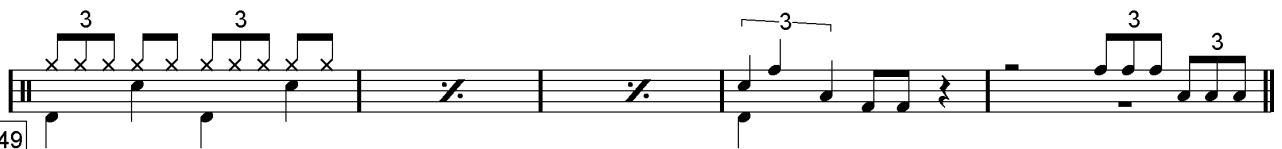
Couplets 2 / 3



Refrains 1 / 2



Pont 1



**Partition batterie page 2:**

**Couplet 4**

54

58

**Refrain 3**

62

66

**Pont2**

70

74

**Couplet 5**

79

83

**Refrain 4**

87 *ad lib.*

91



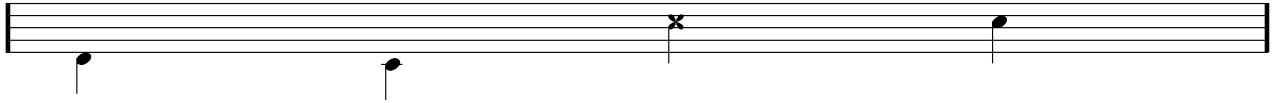
## Écriture batterie:

bd 1

bd 2

rim-shot

sd

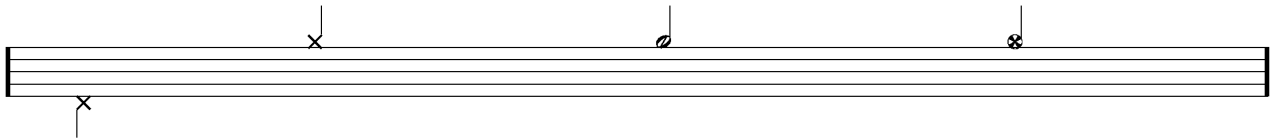


HH Pied

HH fermée

HH entrouverte

HH ouverte

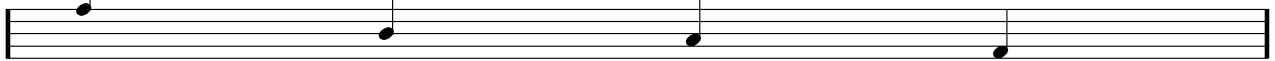


tom 1

tom 2

tom 3

tom 4

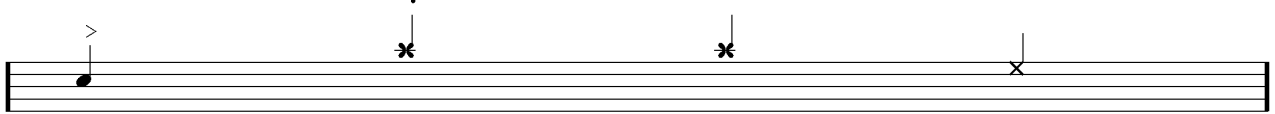


accent

note mutée

crash

cloche

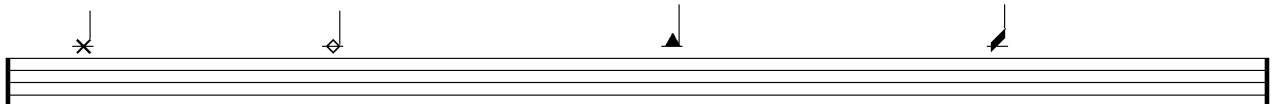


ride

dôme de cymbale

chinoise

splash



flas

note muette

