

Judas Priest You've Got Another Thing Comin':

Table des matières

Introduction:.....2
Tablature page 1:.....3
Tablature page 2:.....4
Partition page 1:.....5
Partition page 2:.....6
Batterie page 1:.....7
Batterie page 2:.....8
Batterie page 3:.....9
Batterie page 4:.....10
Écriture batterie:.....11

Introduction:

Les principales difficultés à signaler pour cette ligne de basse ce sont les syncopes qui sont assez nombreuses, il y a également des accents, des contretemps et des glissés.

Ce morceau est joué au médiator, vous pouvez le jouer aux doigts mais dans ce cas essayez de jouer des notes assez courtes.

Pour la partition il y a 3 dièses à la clef.

Pour la batterie, les plus grosses difficultés c'est le break en doubles-croches qui annonce le solo de guitare et le placement des coups de grosse caisse et de la cymbale crash en contretemps.

Voici le lien pour écouter le morceau:

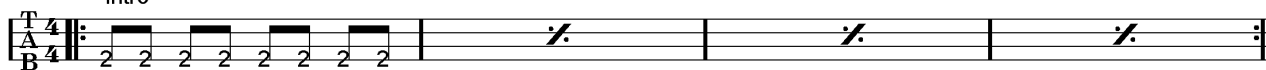
[Judas Priest You've Got Another Thing Comin'](#)

Bon courage à tous !

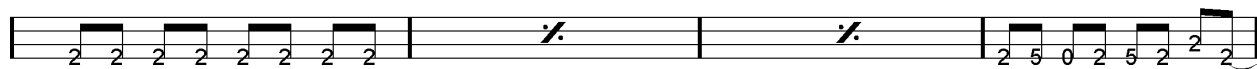
Tablature page 1:

Judas Priest You'ce Got Another Thing Comin'

Intro



Intro guitar tablature for the first system. It shows a treble clef, a 4/4 time signature, and a double bar line with repeat dots. The first measure contains a sequence of eighth notes on the second fret: 2 2 2 2 2 2 2 2. The following two measures are marked with a slash and a vertical line, indicating they are to be played as a single chord. The system ends with a double bar line and repeat dots.



Intro guitar tablature for the second system. It continues with eighth notes on the second fret: 2 2 2 2 2 2 2 2. The next two measures are marked with a slash and a vertical line. The final measure contains a sequence of notes: 2 5 0 2 5 2 2 2.

§ Couplets 1 / 2

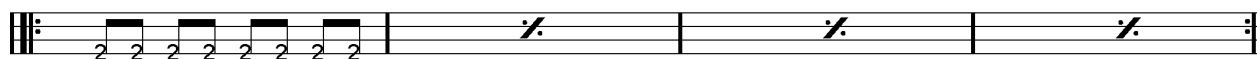


Couplets 1 / 2 guitar tablature for the first system. It starts with eighth notes on the second fret: 2 2 2 2 2 2 2 2. The next two measures are marked with a slash and a vertical line. The final measure contains notes: 2 2 2 2 2 2 0 2.

5x


1.2.3.4.

♢



Couplets 1 / 2 guitar tablature for the second system. It starts with eighth notes on the second fret: 2 2 2 2 2 2 2 2. The next two measures are marked with a slash and a vertical line. The final measure is marked with a slash and a vertical line. The system ends with a double bar line and repeat dots.

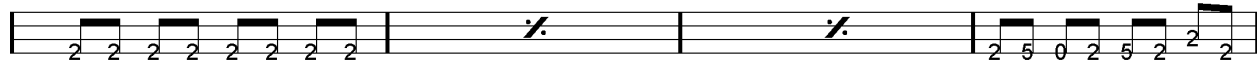
5.



Couplets 1 / 2 guitar tablature for the third system. It starts with eighth notes on the second fret: 2 2 2 2 2 2. The next measure contains notes: 2 4 4 4 4 4 4 4. The system ends with a double bar line.

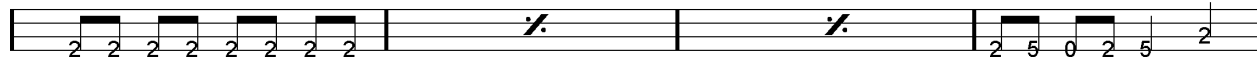
Refrain 1

§

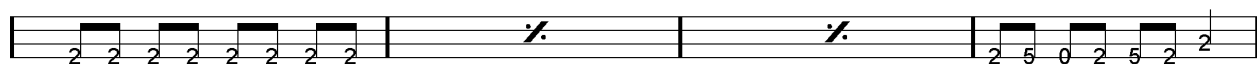


Refrain 1 guitar tablature for the first system. It starts with eighth notes on the second fret: 2 2 2 2 2 2 2 2. The next two measures are marked with a slash and a vertical line. The final measure contains notes: 2 5 0 2 5 2 2 2.

♢ Refrain 2

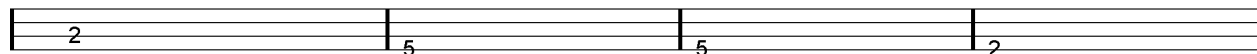


Refrain 2 guitar tablature for the first system. It starts with eighth notes on the second fret: 2 2 2 2 2 2 2 2. The next two measures are marked with a slash and a vertical line. The final measure contains notes: 2 5 0 2 5 2.

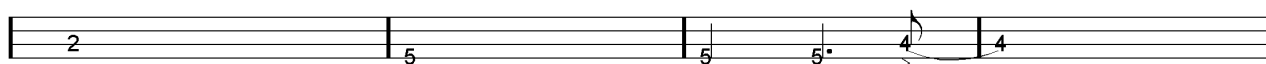


Refrain 2 guitar tablature for the second system. It starts with eighth notes on the second fret: 2 2 2 2 2 2 2 2. The next two measures are marked with a slash and a vertical line. The final measure contains notes: 2 5 0 2 5 2 2.

Pont 1



Pont 1 guitar tablature for the first system. It consists of four measures with fret numbers: 2, 5, 5, 2.



Pont 1 guitar tablature for the second system. It consists of four measures with fret numbers: 2, 5, 5, 4. The final measure has a slur over the notes 4 and 4.

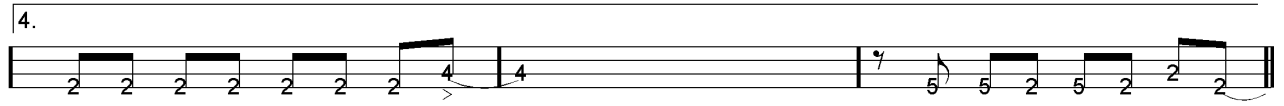
Tablature page 2:

4x Solo Guitare

1.2.3.



4.



Couplet 3



5x

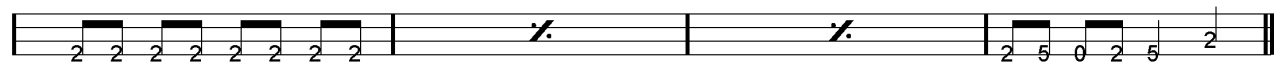
1.2.3.4.



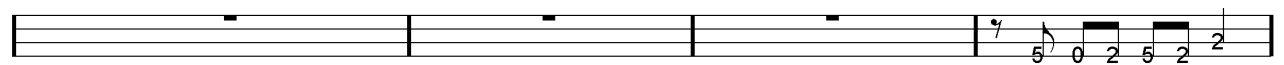
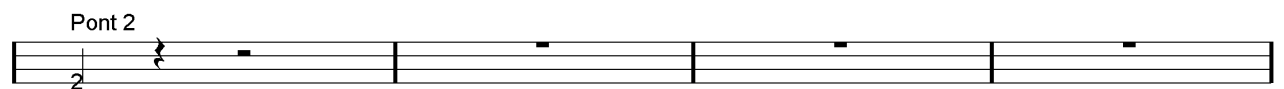
5.




Refrain 3



Pont 2



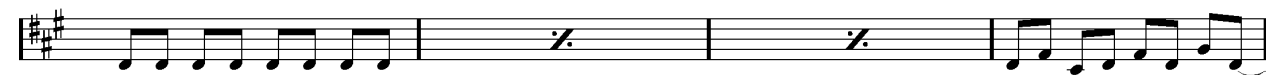
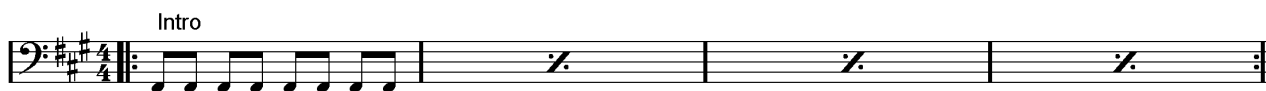
ad lib. Final



Partition page 1:

Judas Priest You'ce Got Another Thing Comin'

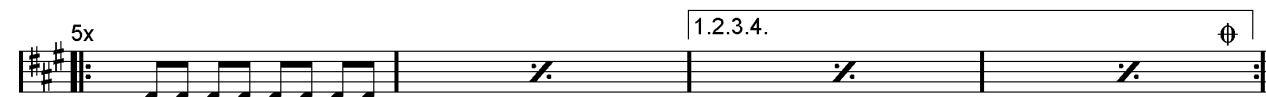
Intro



♩ Couplets 1 / 2



5x



1.2.3.4. ⊕

5.

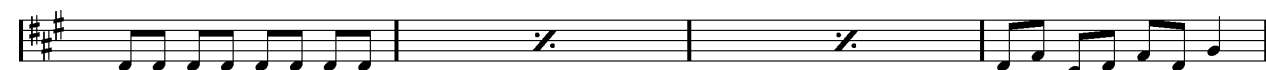
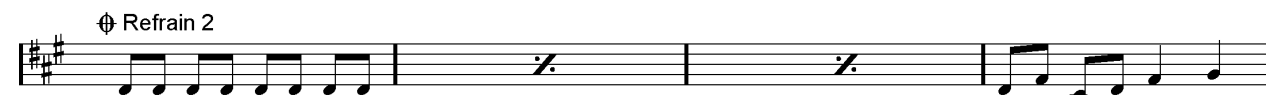


Refrain 1

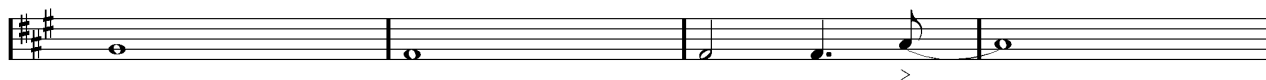
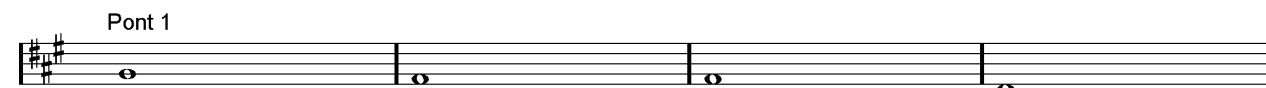


♩

⊕ Refrain 2



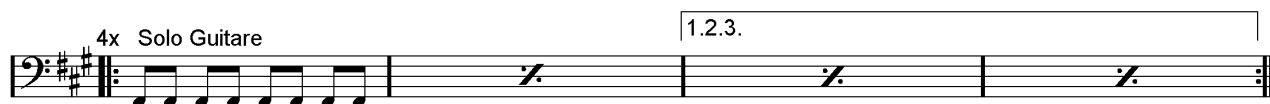
Pont 1



>

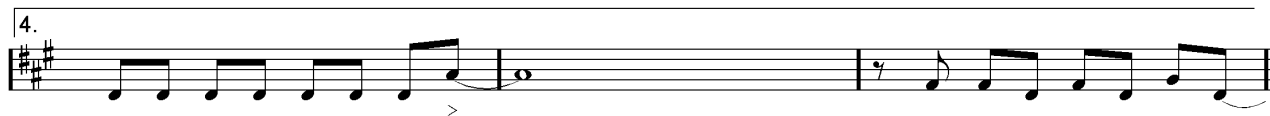
Partition page 2:

4x Solo Guitare



1.2.3.

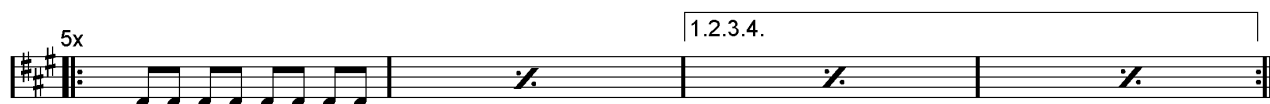
4.



Couplet 3



5x

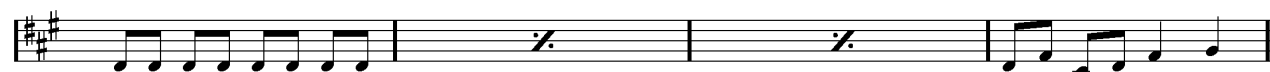
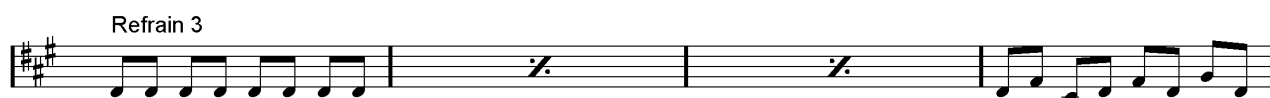


1.2.3.4.

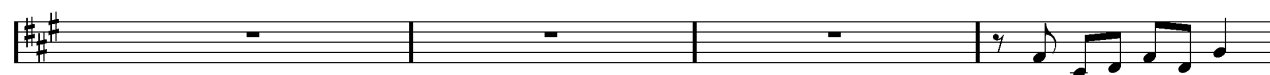
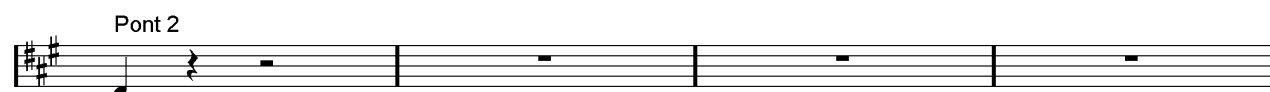
5.



Refrain 3



Pont 2



ad lib. Final



Batterie page 1:

Judas Priest You'ce Got Another Thing Comin'

Intro

4/4 time signature. The first staff shows a drum pattern with four eighth notes marked with 'x' on the first four beats. The second, third, and fourth staves are empty with a double bar line and a slash, indicating a continuation of the pattern.

4/4 time signature. The first staff shows a drum pattern with four eighth notes marked with 'x'. The second, third, and fourth staves are empty with a double bar line and a slash. The fifth staff has a first ending bracket labeled '1.' and a second ending bracket labeled '2.' with a repeat sign. The sixth staff shows a melodic line with eighth notes and a final double bar line.

Couplet 1

4/4 time signature. The first staff shows a drum pattern with eighth notes marked with 'x' and an asterisk. The second, third, and fourth staves are empty with a double bar line and a slash.

4/4 time signature. The first staff shows a drum pattern with eighth notes marked with 'x' and an asterisk. The second, third, and fourth staves are empty with a double bar line and a slash. The fifth staff has a '3x' marking and a repeat sign.

4/4 time signature. The first staff shows a complex drum pattern with eighth notes marked with 'x' and an asterisk, and a melodic line with eighth notes. The second, third, and fourth staves show the continuation of the melodic line.

4/4 time signature. The first staff shows a complex drum pattern with eighth notes marked with 'x' and an asterisk, and a melodic line with eighth notes. The second, third, and fourth staves show the continuation of the melodic line.

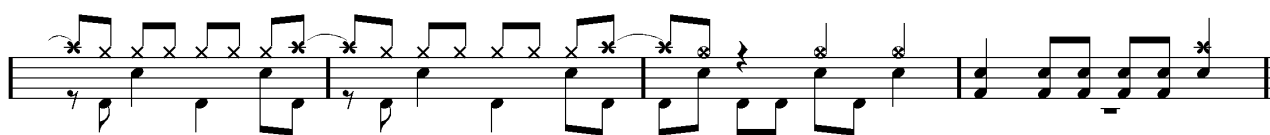
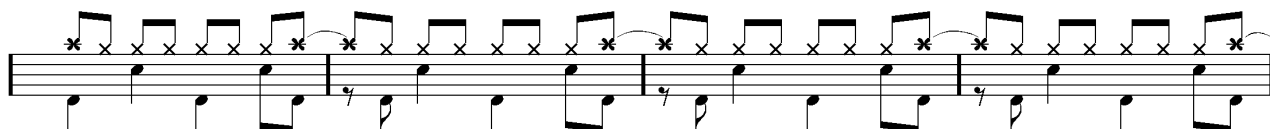
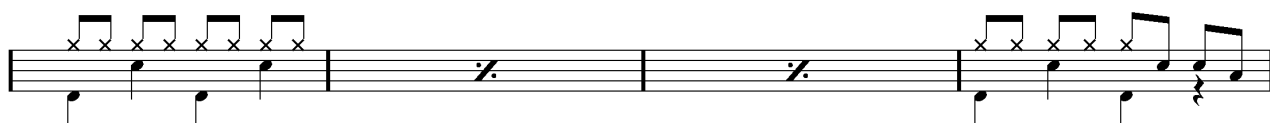
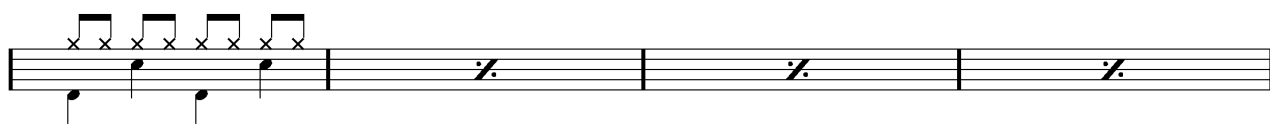
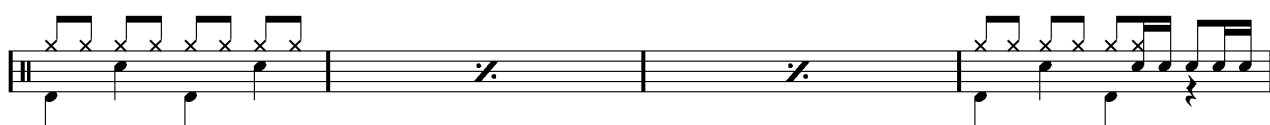
Refrain 1

4/4 time signature. The first staff shows a drum pattern with eighth notes marked with 'x' and an asterisk. The second, third, and fourth staves are empty with a double bar line and a slash. The fifth staff shows a melodic line with eighth notes and a final double bar line.

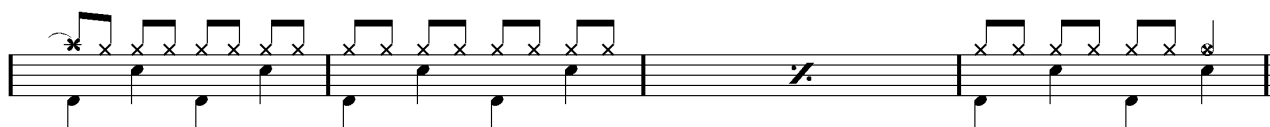
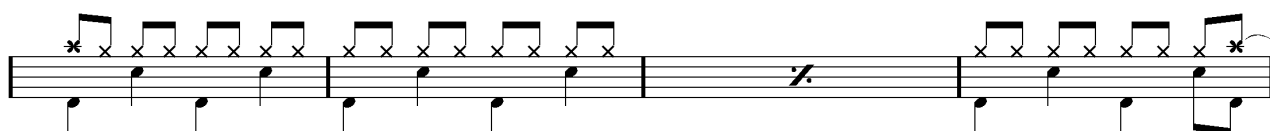
Couplet 2

4/4 time signature. The first staff shows a drum pattern with eighth notes marked with 'x' and an asterisk. The second, third, and fourth staves are empty with a double bar line and a slash. The fifth staff shows a melodic line with eighth notes and a final double bar line.

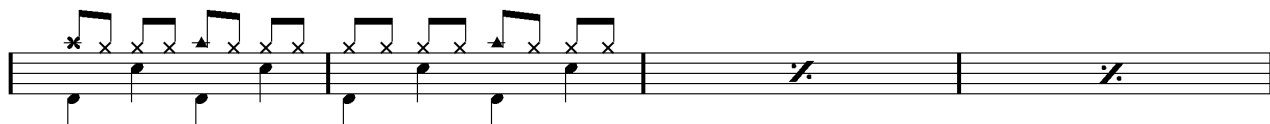
Batterie page 2:



Refrain 2



Pont 1



Batterie page 3:

Drum notation for the first system, featuring a complex rhythmic pattern with eighth and sixteenth notes and a final sixteenth-note triplet.

Solo Guitare

Solo guitar notation for the first system, showing a sequence of eighth notes followed by two measures of rest.

Drum notation for the second system, featuring a complex rhythmic pattern with eighth and sixteenth notes.

Solo guitar notation for the second system, featuring a complex rhythmic pattern with eighth notes and slurs.

Drum notation for the third system, featuring a complex rhythmic pattern with eighth and sixteenth notes and slurs.

Couplet 3

Solo guitar notation for the first system of Couplet 3, featuring a sequence of eighth notes followed by a measure of rest.

Drum notation for the second system of Couplet 3, featuring a complex rhythmic pattern with eighth and sixteenth notes.

Solo guitar notation for the third system of Couplet 3, featuring a sequence of eighth notes followed by two measures of rest.

Batterie page 4:

The first staff of music shows a drum part with a series of eighth notes marked with 'x' on the snare line, indicating a snare drum pattern. The bass line consists of quarter notes. The staff ends with a double bar line and a repeat sign.

The second staff continues the drum part with a more complex snare pattern, including some notes marked with 'x' and others with a star symbol. The bass line remains consistent with quarter notes.

The third staff continues the drum part with a similar snare pattern. The bass line includes some eighth notes and quarter notes. The staff ends with a double bar line.

Refrain 3

The first staff of Refrain 3 shows a drum part with a series of eighth notes marked with 'x' on the snare line. The bass line consists of quarter notes. The staff ends with a double bar line and a repeat sign.

The second staff of Refrain 3 continues the drum part with a series of eighth notes marked with 'x' on the snare line. The bass line consists of quarter notes. The staff ends with a double bar line and a repeat sign.

Pont 2

The first staff of Pont 2 shows a drum part with a series of eighth notes marked with 'x' on the snare line. The bass line consists of quarter notes. The staff ends with a double bar line and a repeat sign.

The second staff of Pont 2 shows a drum part with a series of eighth notes marked with 'x' on the snare line. The bass line consists of quarter notes. The staff ends with a double bar line and a repeat sign.

Refrain 4

The first staff of Refrain 4 shows a drum part with a series of eighth notes marked with 'x' on the snare line. The bass line consists of quarter notes. The staff ends with a double bar line and a repeat sign.

Final

ad lib.

The final staff of music shows a drum part with a series of eighth notes marked with 'x' on the snare line. The bass line consists of quarter notes. The staff ends with a double bar line and a repeat sign.

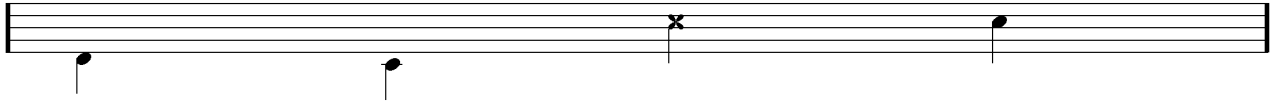
Écriture batterie:

bd 1

bd 2

rim-shot

sd

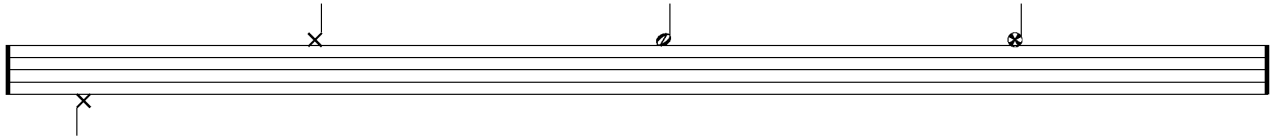


HH Pied

HH fermée

HH entrouverte

HH ouverte

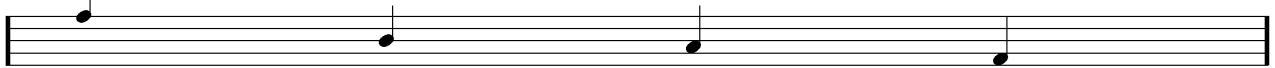


tom 1

tom 2

tom 3

tom 4

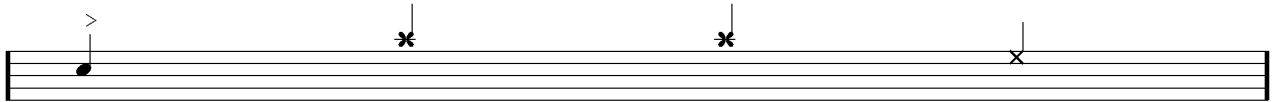


accent

note mutée

crash

cloche

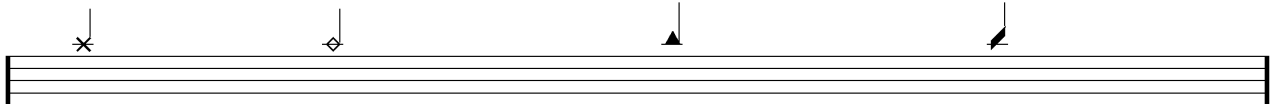


ride

dôme de cymbale

chinoise

splash



flas

note muette

