

John Lennon Imagine:

Table des matières

Introduction:.....	2
Tablature basse:.....	3
Partition basse:.....	4
Partition batterie:.....	5
Écriture batterie:.....	6

Introduction:

Un morceau idéal pour les débutants: on ne joue que des rondes et des blanches, la ligne de basse est très répétitive et il n'y a aucun effet de jeu à signaler.

La partie de batterie est assez facile également, les seules difficultés sont les contretemps à la grosse caisse en doubles-croches pendant le pont et quelques breaks en doubles-croches également le tout sur un tempo lent.

Voici le lien pour écouter le morceau:

[John Lennon Imagine](#)

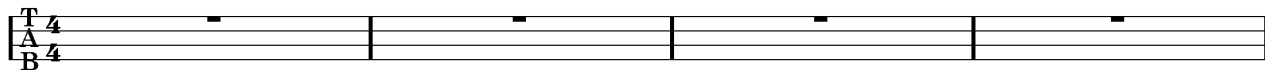
Bon courage à tous !

Tablature basse:

John Lennon Imagine

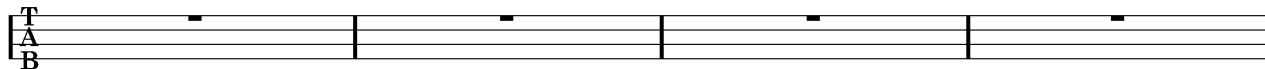
Intro

1 4 4 4



1

Couplet 1

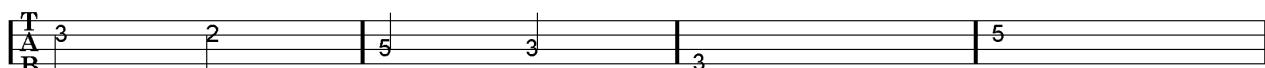


5



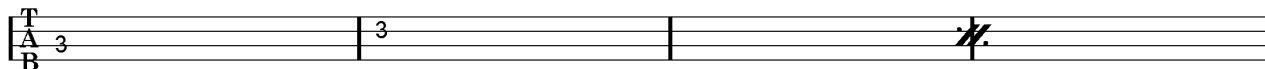
9

Refrain 1

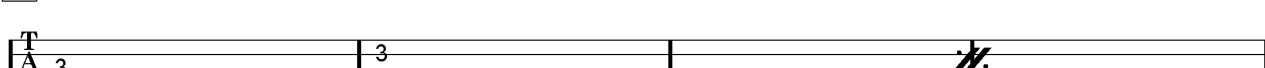


13

Couplet 2

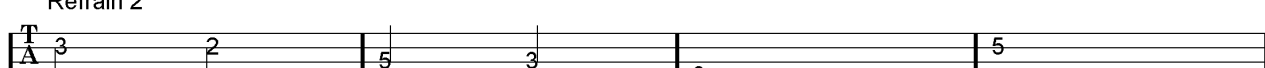


17



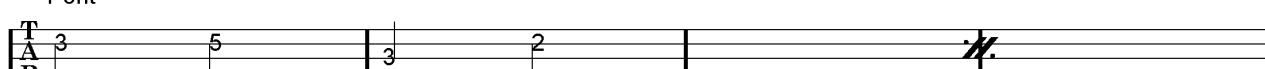
21

Refrain 2



25

Pont

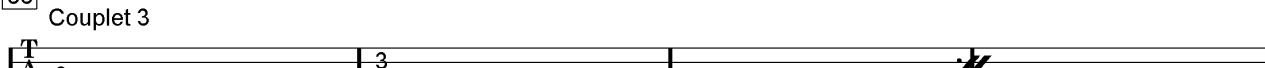


29



33

Couplet 3

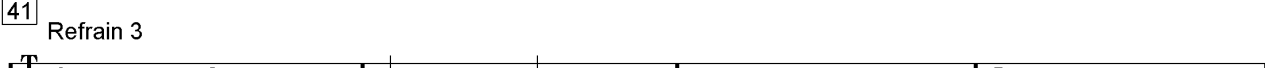


37



41

Refrain 3



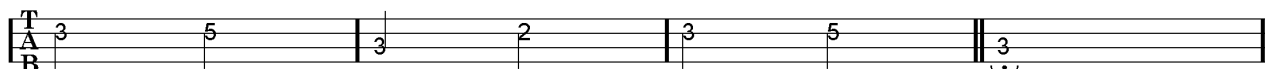
45

Final



49

Ralenti..... Fin

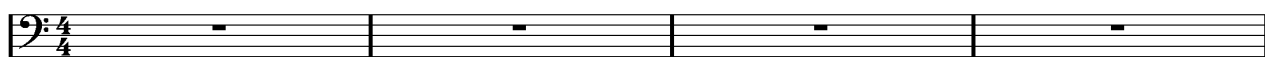


53

Partition basse:

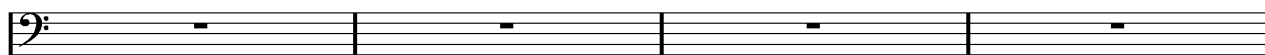
John Lennon Imagine

Intro



1

Couplet 1

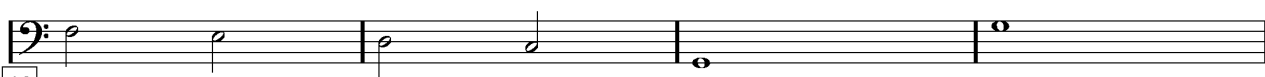


5



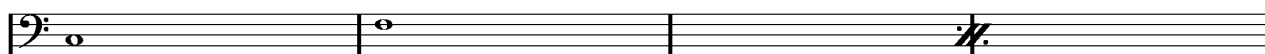
9

Refrain 1



13

Couplet 2

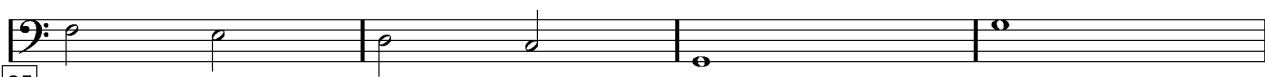


17



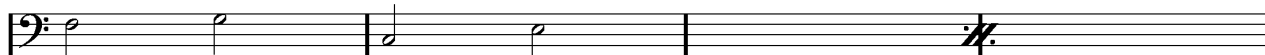
21

Refrain 2

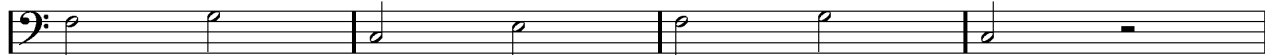


25

Pont

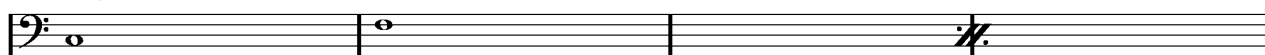


29

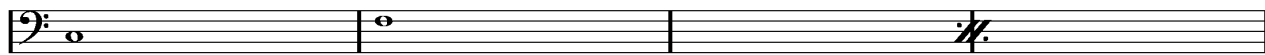


33

Couplet 3

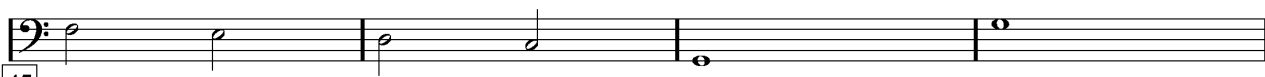


37



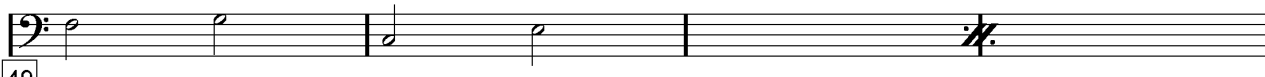
41

Refrain 3



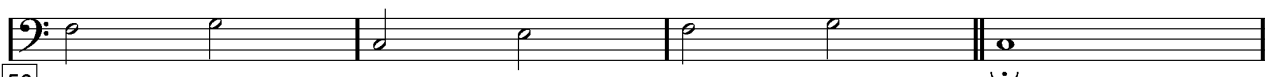
45

Final



49

Ralenti..... Fin



53

Partition batterie:

John Lennon Imagine

♩ = 75

Intro

Musical staff for the Intro section, measures 1-4. The staff shows a drum set with various rhythmic patterns.

1

Couplet 1

Musical staff for Couplet 1, measures 5-8. The staff shows a drum set with various rhythmic patterns.

5

Musical staff for Couplet 1, measures 9-12. The staff shows a drum set with various rhythmic patterns.

9

Refrain 1

Musical staff for Refrain 1, measures 13-16. The staff shows a drum set with various rhythmic patterns.

13

Couplets 2 / 3

Musical staff for Couplets 2 / 3, measures 17-20. The staff shows a drum set with various rhythmic patterns.

17

Musical staff for Couplets 2 / 3, measures 21-24. The staff shows a drum set with various rhythmic patterns.

21

Refrains 2 / 3

Musical staff for Refrains 2 / 3, measures 25-28. The staff shows a drum set with various rhythmic patterns.

25

Pont

Musical staff for Pont, measures 29-32. The staff shows a drum set with various rhythmic patterns.

29

Musical staff for Pont, measures 33-36. The staff shows a drum set with various rhythmic patterns.

33

Final

Musical staff for Final, measures 49-52. The staff shows a drum set with various rhythmic patterns.

49

Ralenti.....

Fin

Musical staff for Final, measures 53-56. The staff shows a drum set with various rhythmic patterns.

53

Écriture batterie:

The image displays musical notation for various drum sounds, organized into six rows. Each row contains four distinct sounds, each represented by a specific note head and stem on a five-line staff. The labels for these sounds are placed above the corresponding notes.

- Row 1:** bd 1 (snare), bd 2 (snare), rim-shot (snare), sd (snare).
- Row 2:** HH Pied (hi-hat), HH fermée (hi-hat), HH entrouverte (hi-hat), HH ouverte (hi-hat).
- Row 3:** tom 1 (tom), tom 2 (tom), tom 3 (tom), tom 4 (tom).
- Row 4:** accent (accent), note mutée (muted note), crash (crash), cloche (bell).
- Row 5:** ride (ride), dôme de cymbale (cymbal), chinoise (chinese), splash (splash).
- Row 6:** fla (floor tom), note muette (muted note).