

Jimi Hendrix May This Be Love:

Table des matières

Introduction:.....2
Tablature basse page 1:.....3
Tablature basse page 2:.....4
Partition basse page 1:.....5
Partition basse page 2:.....6
Partition batterie page 1:.....7
Partition batterie page 2:.....8
Écriture batterie:.....9

Introduction:

Les seules difficultés pour la basse sont les contretemps, les glissés et les syncopes.

Pour la partition il y a 4 dièses à la clef: le Fa#, le Do#, le Sol# et le Ré#.

Comme souvent chez Jimi Hendrix la batterie est très chargée, les plus grosses difficultés sont les accents, les contretemps, les flas, les syncopes et les crescendos sur certains breaks.

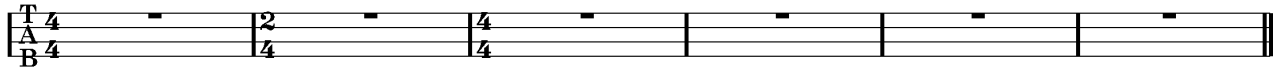
Voici le lien pour écouter le morceau:

[Jimi Hendrix May This Be Love](#)

Bon courage à tous !

Tablature basse page 1:
Jimi Hendrix May This Be Love

Intro



1

Couplet 1



7



11

Couplet 2



15



19

Refrain



24



28



32



35

Tablature basse page 2:

Couplet 3



38



42

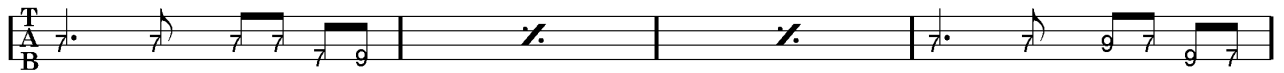
Solo Guitare



46



50



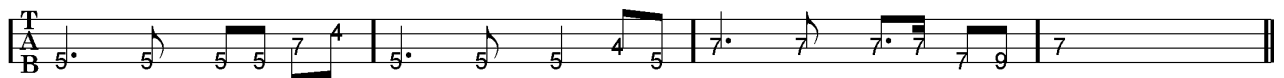
54



58



62



66

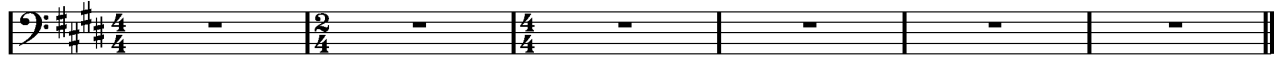
Final



70

Partition basse page 1:
Jimi Hendrix May This Be Love

Intro



1

Couplet 1



7



11

Couplet 2



15



19

Refrain



24



28



32



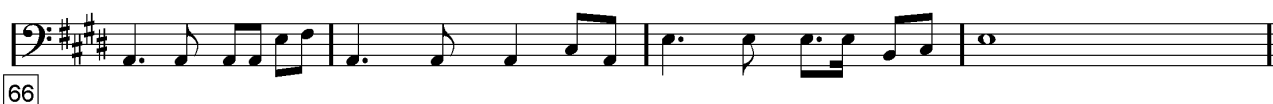
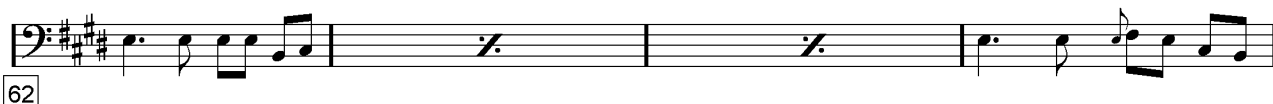
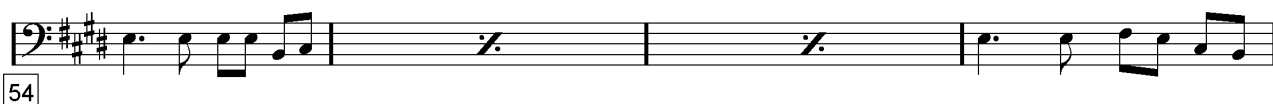
35

Partition basse page 2:

Couplet 3



Solo Guitare



Final



Partition batterie page 1:

Jimi Hendrix May This Be Love

♩ = 97

Intro

Musical notation for the Intro section, measures 1-6. The piece starts in 4/4 time, changes to 2/4 at measure 2, and returns to 4/4 at measure 3. It features a series of chords and melodic fragments.

1

Couplet 1

Musical notation for Couplet 1, measures 7-10. This section features a complex rhythmic pattern with eighth and sixteenth notes, accented with '>' and marked with an asterisk '*'.

7

Musical notation for Couplet 1, measures 11-14. Continuation of the rhythmic pattern from the previous section, ending with a double bar line and repeat sign.

11

Couplet 2

Musical notation for Couplet 2, measures 15-18. Continuation of the rhythmic pattern, ending with a double bar line and repeat sign.

15

Musical notation for Couplet 2, measures 19-23. Continuation of the rhythmic pattern, ending with a double bar line and repeat sign.

19

Refrain 1

Musical notation for Refrain 1, measures 24-25. The first line of the refrain, featuring a rhythmic pattern with eighth notes and accents.

24

Musical notation for Refrain 1, measures 26-27. Continuation of the refrain's rhythmic pattern.

26

Musical notation for Refrain 1, measures 28-29. Continuation of the refrain's rhythmic pattern.

28

Musical notation for Refrain 1, measures 30-31. Continuation of the refrain's rhythmic pattern, including a triplet of eighth notes marked with an asterisk '*'.

30

Musical notation for Refrain 1, measures 32-33. Final line of the refrain, ending with a double bar line and repeat sign.

32

Partition batterie page 2:

34

Musical notation for measure 34, featuring a snare drum pattern with eighth notes and a bass drum pattern with quarter notes. The snare part has accents (>) and a cross (×) over the first note.

36

Musical notation for measure 36, continuing the snare and bass drum patterns. The snare part has accents (>) and a cross (×) over the first note.

Couplet 3

38

Musical notation for measure 38, starting the 'Couplet 3' section. The snare part has accents (>) and crosses (×) over several notes.

42

Musical notation for measure 42, continuing the 'Couplet 3' section. The snare part has accents (>) and crosses (×) over several notes.

Solo

46

Musical notation for measure 46, starting the 'Solo' section. The snare part has accents (>) and crosses (×) over several notes.

50

Musical notation for measure 50, continuing the 'Solo' section. The snare part has accents (>) and crosses (×) over several notes.

54

Musical notation for measure 54, continuing the 'Solo' section. The snare part has accents (>) and crosses (×) over several notes.

58

Musical notation for measure 58, continuing the 'Solo' section. The snare part has accents (>) and crosses (×) over several notes. Triplet markings (3) are present over the snare part.

62

Musical notation for measure 62, continuing the 'Solo' section. The snare part has accents (>) and crosses (×) over several notes. Triplet markings (3) are present over the snare part.

66

Musical notation for measure 66, continuing the 'Solo' section. The snare part has accents (>) and crosses (×) over several notes. Triplet markings (3) are present over the snare part. The word 'Final' is written above the staff.

70

Musical notation for measure 70, featuring a snare drum pattern with eighth notes and a bass drum pattern with quarter notes. The snare part has accents (>) and crosses (×) over the first note.

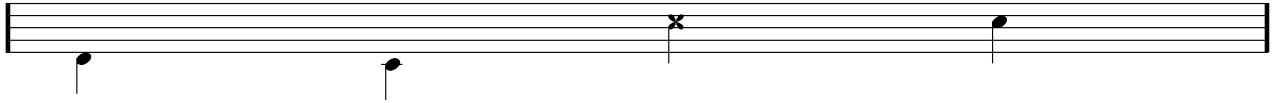
Écriture batterie:

bd 1

bd 2

rim-shot

sd

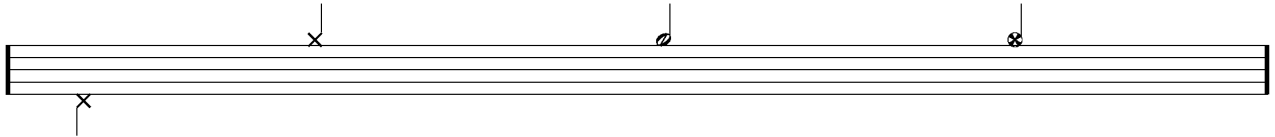


HH Pied

HH fermée

HH entrouverte

HH ouverte

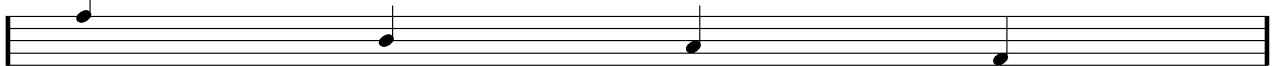


tom 1

tom 2

tom 3

tom 4

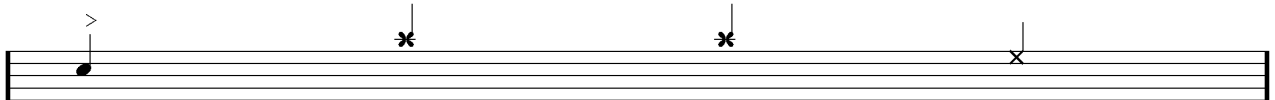


accent

note mutée

crash

cloche

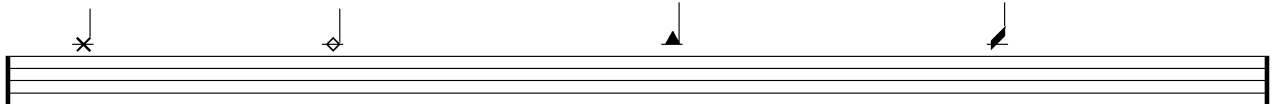


ride

dôme de cymbale

chinoise

splash



flas

note muette

