

**Jean-Jacques Goldman Pas Toi:**

**Table des matières**

Introduction:.....	2
Tablature basse 4 cordes page 1:.....	3
Tablature basse 4 cordes page 2:.....	4
Tablature basse 5 cordes page 1:.....	5
Tablature basse 5 cordes page 2:.....	6
Partition basse 4 cordes page 1:.....	7
Partition basse 4 cordes page 2:.....	8
Partition basse 5 cordes page 1:.....	9
Partition basse 5 cordes page 2:.....	10
Partition batterie page 1:.....	11
Partition batterie page 2:.....	12
Écriture batterie:.....	13

### **Introduction:**

Une ligne de basse très facile: il y a juste des contretemps et des syncopes. Dans le morceau original le bassiste entre dans le morceau seulement à partir du deuxième refrain (en même temps que la batterie) mais j'ai commencé la ligne de basse dès le premier couplet pour renforcer la partie de piano.

Notez que j'ai écrit deux versions pour ce morceau: une pour basse 4 cordes et une pour basse 5 cordes, il y a juste le Ré grave qui nécessite une basse 5 cordes.

La partie de batterie est relativement facile également, les seules difficultés sont les flas, les breaks en doubles-croches et les coups de grosse caisse en doubles-croches sur le final le tout sur un tempo très bas.

Voici le lien pour écouter le morceau:

[Jean-Jacques Goldman Pas Toi](#)

Bon courage à tous !

**Tablature basse 4 cordes page 1:**  
Jean-Jacques Goldman Pas Toi

Intro

1

Couplet 1

5

9

Refrain 1

13

17

Couplet 2

21

25

Refrain 2

29

33

36

## Tablature basse 4 cordes page 2

### Pont

Musical notation for the 'Pont' section, measures 40-43. The notation is written on a six-line staff with three strings (T, A, B) indicated. Measure 40: T (3 3 3 3 3 3 1 1), A (4 4 4 4 4 4 3 3), B (1 1 1 1 1 1 1 3). Measure 41: T (3 3 3 3 3 3 3 3), A (3 3 3 3 3 3 3 3), B (3 3 3 3 3 3 3 3). Measure 42: T (3 3 3 3 3 3 3 3), A (3 3 3 3 3 3 3 3), B (3 3 3 3 3 3 3 3). Measure 43: T (3 3 3 3 3 3 3 3), A (3 3 3 3 3 3 3 3), B (3 3 3 3 3 3 3 3).

40

### Couplet 3

Musical notation for the 'Couplet 3' section, measures 44-47. The notation is written on a six-line staff with three strings (T, A, B) indicated. Measure 44: T (5 5 5 5 5 5 0 0), A (1 1 1 1 1 1 0 0), B (5 5 5 5 5 5 3 3). Measure 45: T (5 5 5 5 5 5 3 3), A (3 3 3 3 3 3 3 3), B (3 3 3 3 3 3 3 3). Measure 46: T (5 5 5 5 5 5 3 3), A (3 3 3 3 3 3 3 3), B (3 3 3 3 3 3 3 3). Measure 47: T (5 5 5 5 5 5 3 3), A (3 3 3 3 3 3 3 3), B (3 3 3 3 3 3 3 3).

44

Musical notation for the 'Couplet 3' section, measures 48-51. The notation is written on a six-line staff with three strings (T, A, B) indicated. Measure 48: T (5 5 5 5 5 5 0 0), A (1 1 1 1 1 1 0 0), B (5 5 5 5 5 5 3 3). Measure 49: T (5 5 5 5 5 5 3 3), A (3 3 3 3 3 3 3 3), B (3 3 3 3 3 3 3 3). Measure 50: T (5 5 5 5 5 5 3 3), A (3 3 3 3 3 3 3 3), B (3 3 3 3 3 3 3 3). Measure 51: T (5 5 5 5 5 5 3 3), A (3 3 3 3 3 3 3 3), B (3 3 3 3 3 3 3 3).

48

### Refrain 3

Musical notation for the 'Refrain 3' section, measures 52-55. The notation is written on a six-line staff with three strings (T, A, B) indicated. Measure 52: T (5 5 5 5 5 5 3 3), A (5 5 5 5 5 5 0 0), B (1 1 1 1 1 1 0 0). Measure 53: T (5 5 5 5 5 5 3 3), A (5 5 5 5 5 5 0 0), B (1 1 1 1 1 1 0 0). Measure 54: T (5 5 5 5 5 5 3 3), A (5 5 5 5 5 5 0 0), B (1 1 1 1 1 1 0 0). Measure 55: T (5 5 5 5 5 5 3 3), A (5 5 5 5 5 5 0 0), B (1 1 1 1 1 1 0 0).

52

Musical notation for the 'Refrain 3' section, measures 56-59. The notation is written on a six-line staff with three strings (T, A, B) indicated. Measure 56: T (3 3 3 3 3 3 3 3), A (5 5 5 5 5 5 0 0), B (1 1 1 1 1 1 3 3). Measure 57: T (3 3 3 3 3 3 3 3), A (5 5 5 5 5 5 0 0), B (1 1 1 1 1 1 3 3). Measure 58: T (3 3 3 3 3 3 3 3), A (5 5 5 5 5 5 0 0), B (1 1 1 1 1 1 3 3). Measure 59: T (3 3 3 3 3 3 3 3), A (5 5 5 5 5 5 0 0), B (1 1 1 1 1 1 3 3).

56

Musical notation for the 'Refrain 3' section, measures 60-63. The notation is written on a six-line staff with three strings (T, A, B) indicated. Measure 60: T (5 5 5 5 5 5 0 0), A (1 1 1 1 1 1 0 0), B (5 5 5 5 5 5 3 3). Measure 61: T (5 5 5 5 5 5 0 0), A (1 1 1 1 1 1 0 0), B (5 5 5 5 5 5 3 3). Measure 62: T (5 5 5 5 5 5 0 0), A (1 1 1 1 1 1 0 0), B (5 5 5 5 5 5 3 3). Measure 63: T (5 5 5 5 5 5 0 0), A (1 1 1 1 1 1 0 0), B (5 5 5 5 5 5 3 3).

60

### Refrain 4

Musical notation for the 'Refrain 4' section, measures 64-67. The notation is written on a six-line staff with three strings (T, A, B) indicated. Measure 64: T ( ), A ( ), B ( ). Measure 65: T ( ), A ( ), B ( ). Measure 66: T ( ), A ( ), B ( ). Measure 67: T ( ), A ( ), B ( ).

64

Musical notation for the 'Refrain 4' section, measures 68-71. The notation is written on a six-line staff with three strings (T, A, B) indicated. Measure 68: T ( ), A ( ), B ( ). Measure 69: T ( ), A ( ), B ( ). Measure 70: T ( ), A ( ), B ( ). Measure 71: T ( ), A ( ), B ( ).

68

### Final

Musical notation for the 'Final' section, measures 72-75. The notation is written on a six-line staff with three strings (T, A, B) indicated. Measure 72: T (1. 3. 3.), A (3. 3.), B (5. 0. 1.). Measure 73: T (1. 3. 3.), A (3. 3.), B (5. 0. 1.). Measure 74: T (1. 3. 3.), A (3. 3.), B (5. 0. 1.). Measure 75: T (1. 3. 3.), A (3. 3.), B (5. 0. 1.).

72

### ad lib.

Musical notation for the 'ad lib.' section, measures 76-79. The notation is written on a six-line staff with three strings (T, A, B) indicated. Measure 76: T (1. 3. 3.), A (3. 3.), B (5. 0. 1.). Measure 77: T (1. 3. 3.), A (3. 3.), B (5. 0. 1.). Measure 78: T (1. 3. 3.), A (3. 3.), B (5. 0. 1.). Measure 79: T (1. 3. 3.), A (3. 3.), B (5. 0. 1.).

76

**Tablature basse 5 cordes page 1:**  
Jean-Jacques Goldman Pas Toi

Intro

Intro: Four measures of whole rests on all strings (T, A, B).

1

Couplet 1

Couplet 1 (Line 1): Four measures of notes (5, 5, 6, 3) on strings A and B.

5

Couplet 1 (Line 2): Four measures of notes (5, 5, 6, 3) on strings A and B.

9

Refrain 1

Refrain 1 (Line 1): Four measures of notes (5, 3, 5, 6) on strings A and B.

13

Refrain 1 (Line 2): Four measures of notes (3, 3, 5, 6) on strings A and B, ending with a 6/4 time signature change.

17

Couplet 2

Couplet 2 (Line 1): Four measures of notes (0, 5, 6, 3) on strings A and B.

21

Couplet 2 (Line 2): Four measures of notes (5, 5, 6, 3) on strings A and B.

25

Refrain 2

Refrain 2 (Line 1): Four measures of notes (5, 3, 5, 6) on strings A and B.

29

Refrain 2 (Line 2): Four measures of notes (3, 3, 5, 6) on strings A and B.

33

Final line: Six measures of triplets and sixteenth notes on strings A and B.

36

## Tablature basse 5 cordes page 2:

Pont



40

Couplet 3



44



48

Refrain 3



52



56



60

Refrain 4

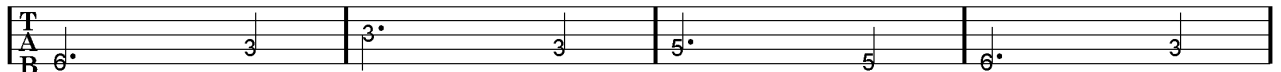


64



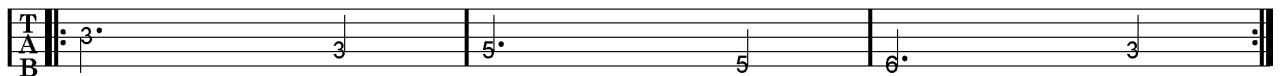
68

Final



72

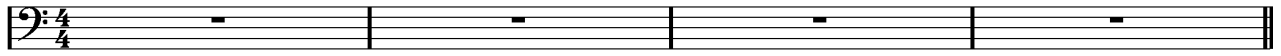
ad lib.



76

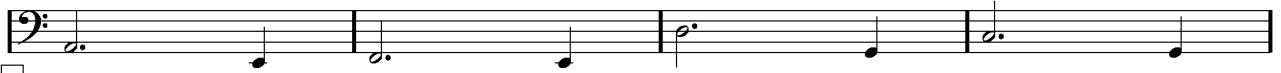
**Partition basse 4 cordes page 1:**  
Jean-Jacques Goldman Pas Toi

Intro

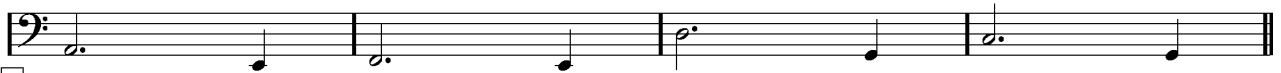


1

Couplet 1



5



9

Refrain 1



13

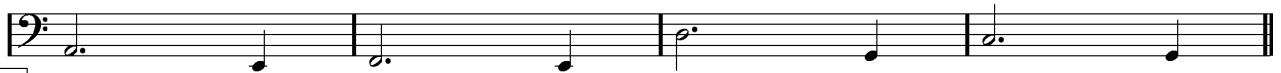


17

Couplet 2



21

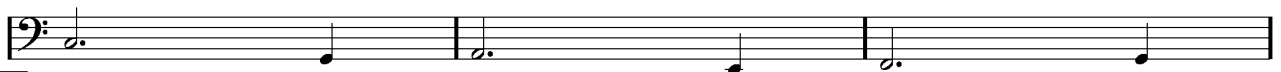


25

Refrain 2



29



33



36

**Partition basse 4 cordes page 2:**

Pont

Musical notation for the Pont section, measures 40-43. The notation is in bass clef with a key signature of one flat. It consists of four measures of music, primarily using eighth and sixteenth notes.

40

Couplet 3

Musical notation for the first line of Couplet 3, measures 44-47. It consists of four measures of music.

44

Musical notation for the second line of Couplet 3, measures 48-51. It consists of four measures of music.

48

Refrain 3

Musical notation for the first line of Refrain 3, measures 52-55. It consists of four measures of music.

52

Musical notation for the second line of Refrain 3, measures 56-59. It consists of four measures of music.

56

Musical notation for the third line of Refrain 3, measures 60-63. It consists of four measures of music, ending with a whole note chord.

60

Refrain 4

Musical notation for the first line of Refrain 4, measures 64-67. It consists of four measures of whole rests.

64

Musical notation for the second line of Refrain 4, measures 68-71. It consists of four measures of whole rests.

68

Final

Musical notation for the Final section, measures 72-75. It consists of four measures of music, primarily using dotted notes.

72

ad lib.

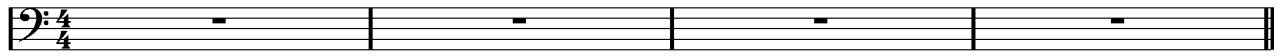
Musical notation for the ad lib. section, measures 76-79. It consists of four measures of music, primarily using dotted notes, ending with a double bar line and repeat dots.

76



**Partition basse 5 cordes page 1:**  
Jean-Jacques Goldman Pas Toi

Intro



1

Couplet 1



5



9

Refrain 1



13



17

Couplet 2



21

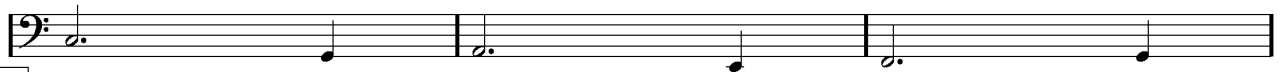


25

Refrain 2



29



33



36

## Partition basse 5 cordes page 2:

Pont



Couplet 3



Refrain 3



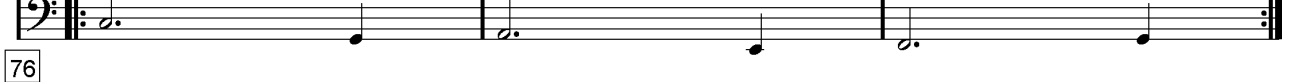
Refrain 4



Final



ad lib.





**Partition batterie page 2:**

Refrain 3

52

56

60

Refrain 4 = 8 mesures sans batterie

64

ad lib. Final  
72

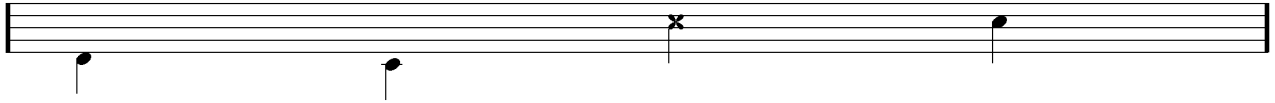
## Écriture batterie:

bd 1

bd 2

rim-shot

sd

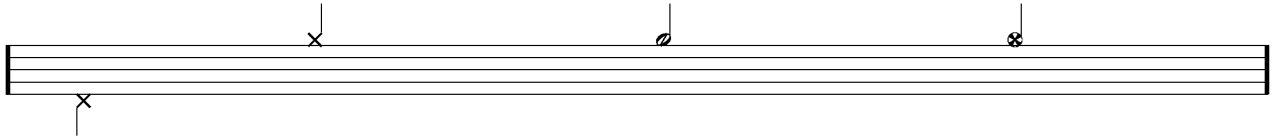


HH Pied

HH fermée

HH entrouverte

HH ouverte

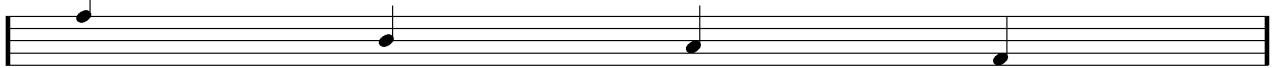


tom 1

tom 2

tom 3

tom 4

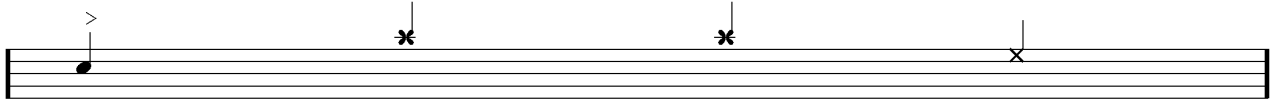


accent

note mutée

crash

cloche

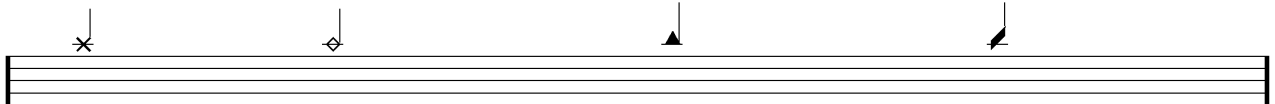


ride

dôme de cymbale

chinoise

splash



flas

note muette

