

Jean-Jacques Goldman La Vie Par Procuration:

Table des matières

Introduction:.....	2
Tablature basse page 1:.....	3
Tablature basse page 2:.....	4
Partition basse page 1:.....	5
Partition basse page 2:.....	6
Partition batterie page 1:.....	7
Partition batterie page 2:.....	8
Partition batterie page 3:.....	9
Écriture batterie:.....	10

Introduction:

Une ligne de basse facile et sans aucun effet de jeu à signaler, il y a juste les 2 syncopes de l'intro qu'il faut bien mettre en place.

Pour la partition de basse il y a 2 dièses à la clef: le Fa# et le Do#.

Une partie de batterie très répétitive, les seules difficultés sont les breaks en doubles-croches.

Voici le lien pour écouter le morceau:

[Jean-Jacques Goldman La Vie Par Procuration](#)

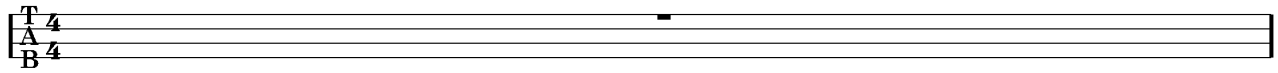
Bon courage à tous !

Tablature basse page 1:

Jean-Jacques Goldman La Vie Par Procuration

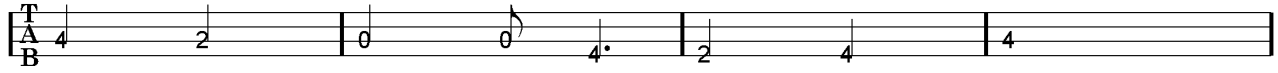
Intro chant tempo = 108

1



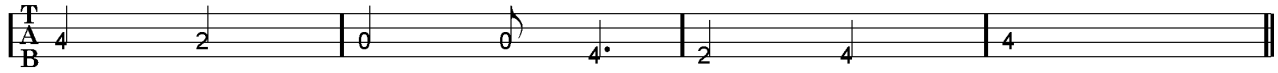
Intro

2

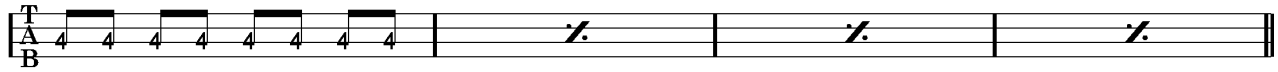


Ralenti.....

6



10



Couplet 1 tempo = 112

14

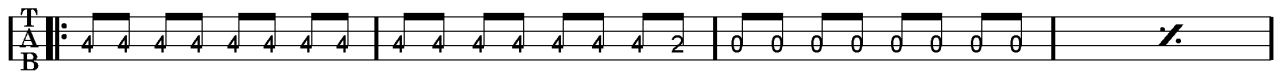


18



Couplets 2 / 3

22



26



Pré-Refrains 1 / 2

30



34



Tablature basse page 2:

Refrains 1 / 3



39



43

Ponts 1 / 2



47



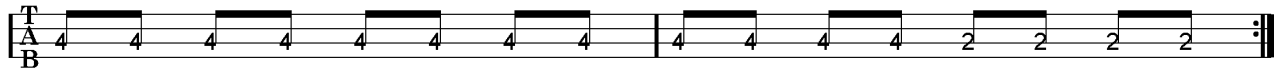
51

Refrains 2 / 4



55

Instrumental 1 / 2



58

Pont 3



98



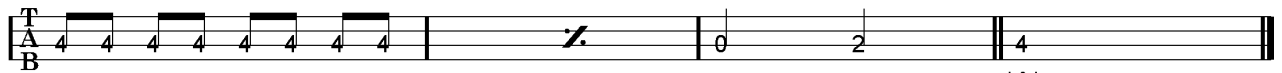
102

Refrain 5



106

Ralenti..... Fin

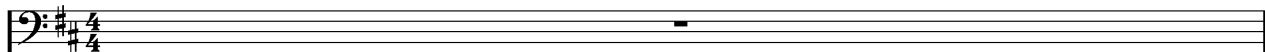


110

Partition basse page 1:

Jean-Jacques Goldman La Vie Par Procuration

Intro chant tempo = 108



1

Intro

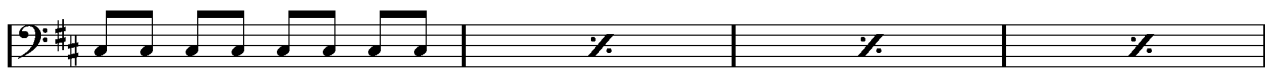


2

Ralenti.....



6

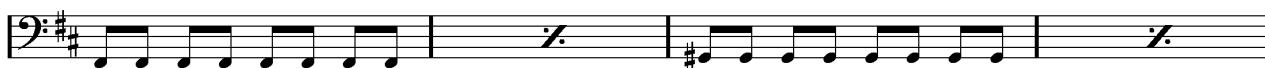


10

Couplet 1 tempo = 112



14



18

Couplets 2 / 3



22



26

Pré-Refrains 1 / 2

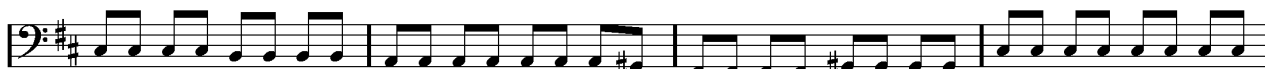


30



34

Refrains 1 / 3



39

Partition basse page 2:

43

Ponts 1 / 2

47

51

Refrains 2 / 4

55

Instrumental 1 / 2

58

Pont 3

98

102

Refrain 5

106

110

Partition batterie page 1:

Jean-Jacques Goldman La Vie Par Procuration

♩ = 108

tempo = 112

Intro 1 = 8 mesures sans batterie, ralentir sur la 8ème mesure

1 9

Intro 2

10

Couplet 1

14

18

22

26

Pré-Refrain 1

30

34

Refrain 1

39

43

Partition batterie page 2:

Pont 1

Musical notation for Pont 1, measures 47-50. The notation consists of two staves. The top staff contains a sequence of eighth notes with 'x' marks above them, indicating cymbal hits. The bottom staff contains a sequence of quarter notes. Measure 47 starts with an asterisk on the first note. Measures 49 and 50 are marked with a double bar line and a slash, indicating a section break.

Musical notation for Pont 1 continuation, measures 51-54. The notation consists of two staves. The top staff contains a sequence of eighth notes with 'x' marks above them. The bottom staff contains a sequence of quarter notes. Measures 53 and 54 are marked with a double bar line and a slash, indicating a section break.

Refrain 2

Musical notation for Refrain 2, measures 55-58. The notation consists of two staves. The top staff contains a sequence of eighth notes with 'x' marks above them. The bottom staff contains a sequence of quarter notes. Measure 55 starts with an asterisk on the first note. Measure 58 is marked with a double bar line and a slash, indicating a section break.

Instrumental 1

Musical notation for Instrumental 1, measures 59-63. The notation consists of two staves. The top staff contains a sequence of eighth notes with 'x' marks above them. The bottom staff contains a sequence of quarter notes. Measures 62 and 63 feature a more complex rhythmic pattern with eighth and sixteenth notes.

Couplet 3

Musical notation for Couplet 3, measures 64-67. The notation consists of two staves. The top staff contains a sequence of eighth notes with 'x' marks above them. The bottom staff contains a sequence of quarter notes. Measure 64 starts with an asterisk on the first note. Measures 66 and 67 are marked with a double bar line and a slash, indicating a section break.

Musical notation for Couplet 3 continuation, measures 68-71. The notation consists of two staves. The top staff contains a sequence of eighth notes with 'x' marks above them. The bottom staff contains a sequence of quarter notes. Measures 70 and 71 are marked with a double bar line and a slash, indicating a section break.

Pré Refrain 2

Musical notation for Pré Refrain 2, measures 72-75. The notation consists of two staves. The top staff contains a sequence of eighth notes with 'x' marks above them. The bottom staff contains a sequence of quarter notes. Measures 74 and 75 are marked with a double bar line and a slash, indicating a section break.

Musical notation for Pré Refrain 2 continuation, measures 76-80. The notation consists of two staves. The top staff contains a sequence of eighth notes with 'x' marks above them. The bottom staff contains a sequence of quarter notes. Measures 79 and 80 feature a more complex rhythmic pattern with eighth and sixteenth notes.

Refrain 3

Musical notation for Refrain 3, measures 81-84. The notation consists of two staves. The top staff contains a sequence of eighth notes with 'x' marks above them. The bottom staff contains a sequence of quarter notes. Measure 81 starts with an asterisk on the first note. Measure 84 is marked with a double bar line and a slash, indicating a section break.

Musical notation for Refrain 3 continuation, measures 85-88. The notation consists of two staves. The top staff contains a sequence of eighth notes with 'x' marks above them. The bottom staff contains a sequence of quarter notes. Measures 87 and 88 are marked with a double bar line and a slash, indicating a section break.

Partition batterie page 3:

Pont 2

85

89

Refrain 4

93

Instrumental 2

96

Pont 3

98

102

Refrain 5

106

110

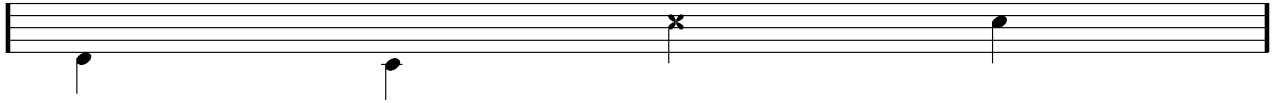
Écriture batterie:

bd 1

bd 2

rim-shot

sd

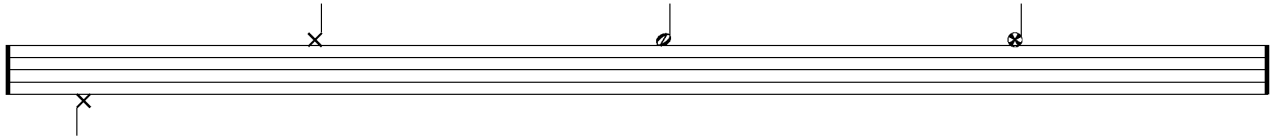


HH Pied

HH fermée

HH entrouverte

HH ouverte

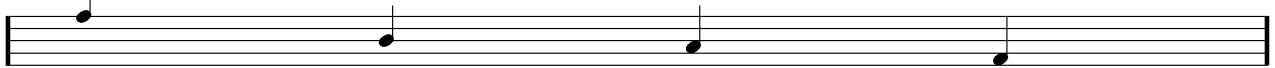


tom 1

tom 2

tom 3

tom 4

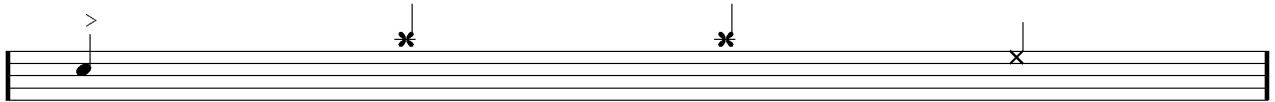


accent

note mutée

crash

cloche

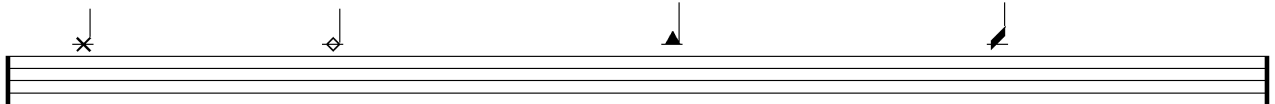


ride

dôme de cymbale

chinoise

splash



flas

note muette

