

## Guns N' Roses Shotgun Blues:

### **Table des matières**

Introduction:.....	2
Tablature basse page 1:.....	3
Tablature basse page 2:.....	4
Partition basse page 1:.....	5
Partition basse page 2:.....	6
Partition batterie page 1:.....	7
Partition batterie page 2:.....	8
Partition batterie page 3:.....	9
Écriture batterie:.....	10

### **Introduction:**

Le gros problème de ce morceau c'est le tempo qui est très rapide.

Les plus grosses difficultés de cette ligne de basse ce sont les contretemps, les hammers et les syncopes. Pensez à accentuer la dernière note à la fin du morceau.

Pour la partition il y a 1 dièse à la clef: le Fa#.

Pour la batterie, les difficultés sont les suivantes: il y a beaucoup de contretemps à la grosse caisse et des syncopes sur la cymbale crash. Il y a également les breaks en doubles-croches qui pourraient poser des problèmes aux débutants du fait que comme je l'ai indiqué plus haut le tempo est très rapide (185). Pensez à muter le dernier coup de cymbale crash à la fin du morceau.

Voici le lien pour écouter le morceau:

[Guns N' Roses Shotgun Blues](#)

Bon courage à tous !

**Tablature basse page 1:**  
**Guns N' Roses Shotgun Blues**

Intro batterie = 4 mesures sans basse

T 4  
A 4  
B 4

1

Refrains 1 / 2

5

9

Couplets 1 / 2

13

17

21

25

Pré-Refrains 1 / 2

29

33

37

Pont 1

77

81

85

# Tablature basse page 2:

Solo Guitare

89

93

103

2.

108

Pont 2

112

116

Refrain 3

120

124

128

132

Final

4x

140

3x

146

150

Fin

156 >

**Partition basse page 1:**

**Guns N' Roses Shotgun Blues**

Intro batterie = 4 mesures sans basse



1

Refrains 1 / 2



5

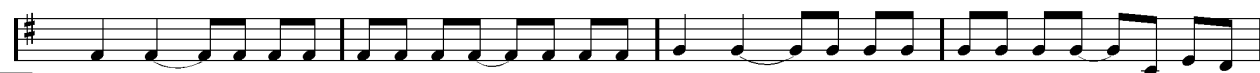


9

Couplets 1 / 2



13



17



21



25

Pré-Refrains 1 / 2



29



33



37

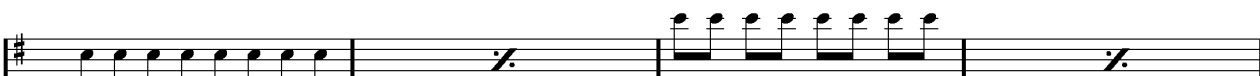
Pont 1



77



81



85

# Partition basse page 2:

Solo Guitare

89

93

103

108 Pont 2

112

116 Refrain 3

120

124

128

132 4x Final 

140

146

150 

156 > Fin

# Partition batterie page 1:

## Guns N' Roses Shotgun Blues

♩ = 185

### Intro

Musical notation for the Intro section, measures 1-4. The notation is on a single staff with a treble clef and a 4/4 time signature. It features a series of chords marked with asterisks, followed by a double bar line and a repeat sign. The final measure contains a complex rhythmic pattern with eighth and sixteenth notes.

### Refrains 1 / 2

Musical notation for the Refrains section, measures 5-8. The notation is on a single staff with a treble clef and a 4/4 time signature. It features a series of chords marked with asterisks, followed by a double bar line and a repeat sign. The final measure contains a complex rhythmic pattern with eighth and sixteenth notes.

### Couplets 1 / 2

Musical notation for the Couplets section, measures 13-16. The notation is on a single staff with a treble clef and a 4/4 time signature. It features a series of chords marked with asterisks, followed by a double bar line and a repeat sign. The final measure contains a complex rhythmic pattern with eighth and sixteenth notes.

Musical notation for the Couplets section, measures 17-20. The notation is on a single staff with a treble clef and a 4/4 time signature. It features a series of chords marked with asterisks, followed by a double bar line and a repeat sign. The final measure contains a complex rhythmic pattern with eighth and sixteenth notes.

Musical notation for the Couplets section, measures 21-24. The notation is on a single staff with a treble clef and a 4/4 time signature. It features a series of chords marked with asterisks, followed by a double bar line and a repeat sign. The final measure contains a complex rhythmic pattern with eighth and sixteenth notes.

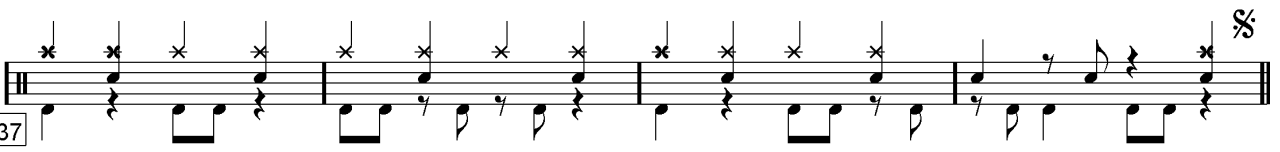
Musical notation for the Couplets section, measures 25-28. The notation is on a single staff with a treble clef and a 4/4 time signature. It features a series of chords marked with asterisks, followed by a double bar line and a repeat sign. The final measure contains a complex rhythmic pattern with eighth and sixteenth notes.

### Pré-Refrain 1

Musical notation for the Pré-Refrain section, measures 29-32. The notation is on a single staff with a treble clef and a 4/4 time signature. It features a series of chords marked with asterisks, followed by a double bar line and a repeat sign. The final measure contains a complex rhythmic pattern with eighth and sixteenth notes.

Musical notation for the Pré-Refrain section, measures 33-36. The notation is on a single staff with a treble clef and a 4/4 time signature. It features a series of chords marked with asterisks, followed by a double bar line and a repeat sign. The final measure contains a complex rhythmic pattern with eighth and sixteenth notes.

**Partition batterie page 2:**

37 

⌘ Pré-Refrain 2

65 

69 

Pont 1

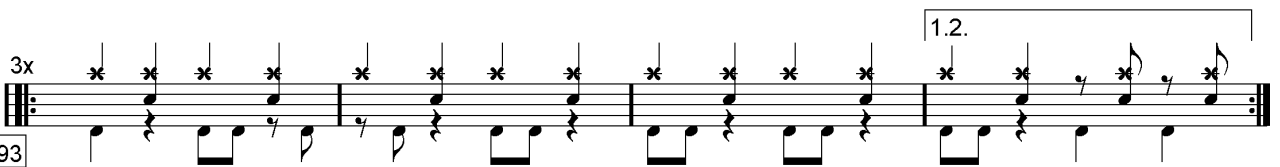
77 

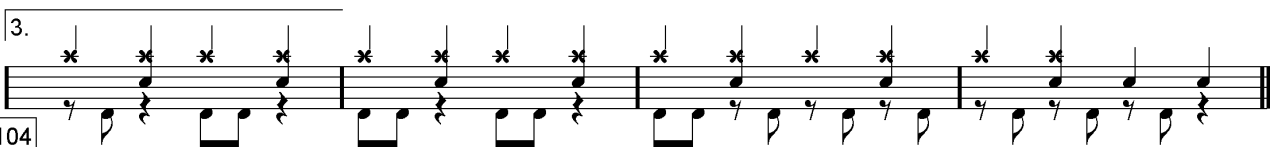
81 

85 

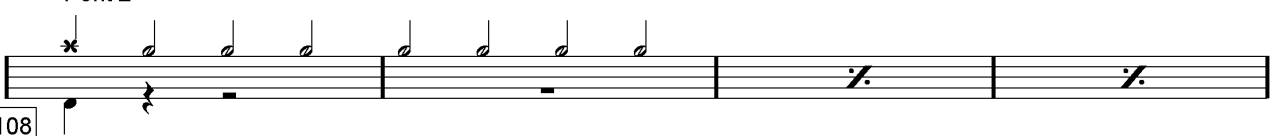
Solo Guitare

89 

93 

104 

Pont 2

108 



**Partition batterie page 3:**

112

Refrain 3

116

124

128

Final

132

136

140

144

148

152

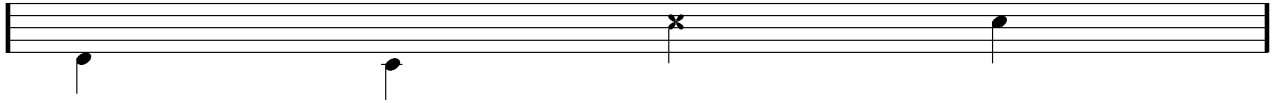
## Écriture batterie:

bd 1

bd 2

rim-shot

sd

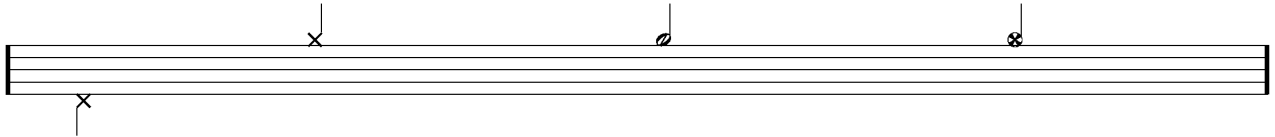


HH Pied

HH fermée

HH entrouverte

HH ouverte

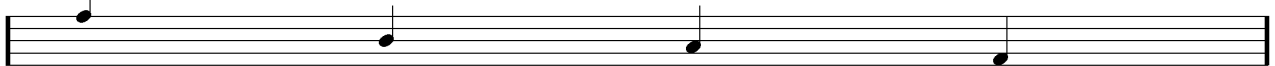


tom 1

tom 2

tom 3

tom 4

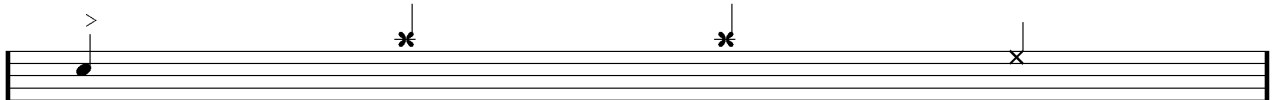


accent

note mutée

crash

cloche

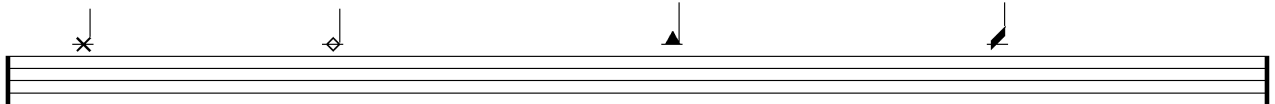


ride

dôme de cymbale

chinoise

splash



flas

note muette

