

Guns N' Roses Don't Cry:

Table des matières

Introduction:.....2
Tablature basse page 1:.....3
Tablature basse page 2:.....4
Partition basse page 1:.....5
Partition basse page 2:.....6
Partition batterie page 1:.....7
Partition batterie page 2:.....8
Partition batterie page 3:.....9
Écriture batterie:.....10

Introduction:

Un morceau très chargé que ce soit pour la basse ou pour la batterie (personnellement je trouve même qu'il est trop chargé mais c'est bien dans le style de ce groupe), **attention au passage en ternaire à la fin du couplet 3.**

Attention ! pour jouer ce morceau il faut désaccorder la basse d'un demi-ton plus bas (Eb / Ab / Db / Gb). La ligne de basse est assez compliquée, il y a des hammers et des glissés qu'il faudra bien négocier et quelques mises en place en doubles-croches pas faciles à exécuter (en particulier au début du morceau).

Une partie de batterie très difficile: il y a énormément de breaks différents dont certains sont en triples-croches (sur un tempo très bas heureusement), les mises en place de la grosse caisse et de la charley sont très variées également et il faut bien maîtriser la technique des flas.

Voici le lien pour écouter le morceau:

[guns n roses don't cry](#)

Bon courage à tous !

Tablature basse page 1:

Attention ! pour jouer ce morceau il faut désaccorder la basse d'un demi-ton plus bas (Eb / Ab / Db / Gb)

Guns N' Roses Don't Cry

Intro



1

Couplet 1



7

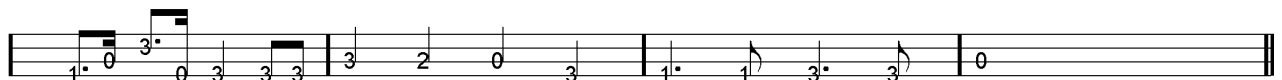


11

Refrain 1



15

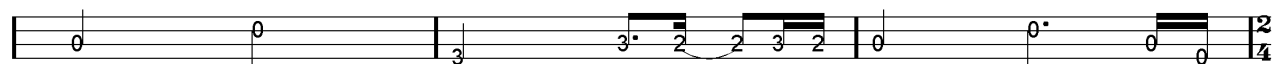


19

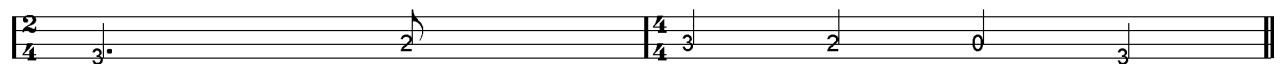
Couplet 2



23

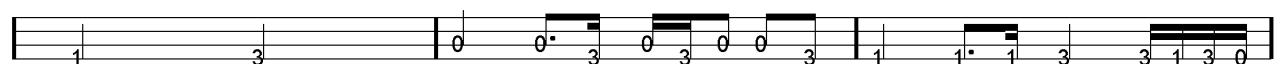


27

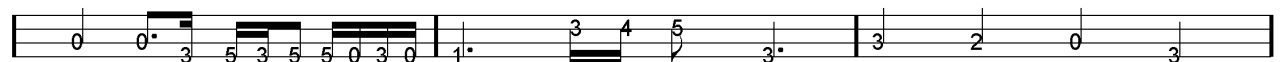


30

Refrain 2



32



35

Tablature basse page 2:

Attention ! pour jouer ce morceau il faut désaccorder la basse d'un demi-ton plus bas (Eb / Ab / Db / Gb)

38

Musical notation for measure 38, featuring a 2/4 time signature and a key signature of one flat. The notation includes a treble clef, a 3-measure rest, and a series of eighth notes: 3, 0, 3, 0, 3, 0, 0, 0, 0, 0, 0, 0, 0, 0, 0, 0, 0, 0, 12, 0, 12.

Chorus

40

Musical notation for measure 40, starting with a treble clef and a 5-measure rest. The notation includes eighth notes: 5, 0, 1, 1, 3, 3, 0, 3, 5, 3, 3, 0, 1, 3, 3, 0, 0, 3, 0.

43

Musical notation for measure 43, featuring eighth notes: 0, 0, 0, 3, 0, 3, 0, 3, 0, 3, 0, 1, 1, 1, 0, 3, 3, 0, 3, 0, 3, 0, 0, 0, 0, 0, 0, 0, 0, 1, 1, 1, 1, 1, 1, 1, 1.

46

Musical notation for measure 46, featuring eighth notes: 1, 1, 1, 1, 1, 1, 1, 3, 3, 3, 3, 5.

Couplet 3

48

Musical notation for measure 48, starting with a treble clef and a 5-measure rest. The notation includes eighth notes: 5, 3, 3, 2, 2, 3, 2, 0, 5, 0, 3, 3, 2, 2, 3, 2, 0, 0, 0.

52

Musical notation for measure 52, starting with a treble clef and a 5-measure rest. The notation includes eighth notes: 5, 7, 0, 3, 3, 2, 2, 3, 2, 0, 5, 0, 0, 3, 4, 5, 3, 2, 0, 3, 2, 0, 3, 4, 5, 3, 0, 3, 3.

Refrain 3

56

Musical notation for measure 56, starting with a treble clef and a 1-measure rest. The notation includes eighth notes: 1, 3, 5, 5, 5, 3, 5, 3, 5, 5, 3, 0, 1, 3, 0, 5, 5, 3, 5, 3, 5, 5, 3, 0.

60

Musical notation for measure 60, featuring eighth notes: 1, 0, 1, 1, 3, 3, 3, 0, 3, 2, 0, 3, 1, 1, 3, 3, 0.

63

Musical notation for measure 63, featuring eighth notes: 1, 1, 0, 3, 0, 3, 0, 0, 3, 1, 0, 0, 0, 0, 0, 0, 0, 0, 1, 1, 1, 1, 1, 0, 1, 0.

Final

66

Musical notation for measure 66, starting with a treble clef and a 1-measure rest. The notation includes eighth notes: 1, 0, 1, 3, 3, 1, 0, 0, 0, 3, 0, 3, 0, 1, 1, 1, 1, 3, 3, 1, 3, 3.

Partition basse page 1:

Attention ! pour jouer ce morceau il faut désaccorder la basse d'un demi-ton plus bas (Eb / Ab / Db / Gb)

Guns N' Roses Don't Cry

Intro

Musical notation for the Intro, starting at measure 1. It features a bass line in 4/4 time, with a key signature of one flat (Eb). The melody begins with a quarter rest, followed by a half note Eb, and then a series of eighth notes: Eb, Ab, Bb, Cb. The piece concludes with a 2/4 time signature change, a quarter note Eb, and a final 4/4 time signature change with a whole note Eb.

Couplet 1

Musical notation for the first line of the first verse, starting at measure 7. It begins with a half note Eb, followed by a half note Ab, and then a series of eighth notes: Bb, Cb, Ab, Bb. The line ends with a double bar line and a repeat sign.

Musical notation for the second line of the first verse, starting at measure 11. It begins with a half note Eb, followed by a half note Ab, and then a series of eighth notes: Bb, Cb, Ab, Bb. The line ends with a double bar line.

Refrain 1

Musical notation for the first line of the first chorus, starting at measure 15. It features a steady eighth-note bass line: Eb, Ab, Bb, Cb, Ab, Bb, Cb, Ab. The line ends with a double bar line.

Musical notation for the second line of the first chorus, starting at measure 19. It features a steady eighth-note bass line: Eb, Ab, Bb, Cb, Ab, Bb, Cb, Ab. The line ends with a double bar line.

Couplet 2

Musical notation for the first line of the second verse, starting at measure 23. It begins with a half note Eb, followed by a half note Ab, and then a series of eighth notes: Bb, Cb, Ab, Bb. The line ends with a double bar line.

Musical notation for the second line of the second verse, starting at measure 27. It begins with a half note Eb, followed by a half note Ab, and then a series of eighth notes: Bb, Cb, Ab, Bb. The line ends with a double bar line and a 2/4 time signature change.

Musical notation for the third line of the second verse, starting at measure 30. It begins with a 2/4 time signature change, a quarter note Eb, and then a 4/4 time signature change with a half note Ab. The line ends with a double bar line.

Refrain 2

Musical notation for the first line of the second chorus, starting at measure 32. It features a steady eighth-note bass line: Eb, Ab, Bb, Cb, Ab, Bb, Cb, Ab. The line ends with a double bar line.

Musical notation for the second line of the second chorus, starting at measure 35. It features a steady eighth-note bass line: Eb, Ab, Bb, Cb, Ab, Bb, Cb, Ab. The line ends with a double bar line.

Partition basse page 2:

Attention ! pour jouer ce morceau il faut désaccorder la basse d'un demi-ton plus bas (Eb / Ab / Db / Gb)

38  Musical notation for measures 38-39 in bass clef. Measure 38 contains a half note followed by eighth notes. Measure 39 contains a continuous eighth-note pattern.

40 **Chorus**  Musical notation for measure 40, labeled 'Chorus'. It features a dotted half note, a quarter note, and a triplet of eighth notes.

43  Musical notation for measures 43-44. Measure 43 contains eighth notes and quarter notes. Measure 44 contains a continuous eighth-note pattern.

46  Musical notation for measures 46-47. Measure 46 contains eighth notes and quarter notes. Measure 47 contains a whole note followed by a whole rest.

48 **Couplet 3**  Musical notation for measures 48-49, labeled 'Couplet 3'. Measure 48 contains a dotted half note and quarter notes. Measure 49 contains eighth notes and quarter notes.

52  Musical notation for measures 52-53. Measure 52 contains a dotted half note and quarter notes. Measure 53 contains eighth notes and quarter notes, ending with a triplet of eighth notes.

56 **Refrain 3**  Musical notation for measures 56-57, labeled 'Refrain 3'. Measure 56 contains a dotted half note and quarter notes. Measure 57 contains eighth notes and quarter notes.

60  Musical notation for measures 60-61. Measure 60 contains eighth notes and quarter notes. Measure 61 contains a dotted half note and quarter notes.

63  Musical notation for measures 63-64. Measure 63 contains eighth notes and quarter notes. Measure 64 contains eighth notes and quarter notes.

66 **Final**  Musical notation for measures 66-67, labeled 'Final'. Measure 66 contains eighth notes and quarter notes. Measure 67 contains a dotted half note followed by a whole rest.

Partition batterie page 1:
Guns N' Roses Don't Cry

♩ = 63 Intro

1

Couplet 1

7

11

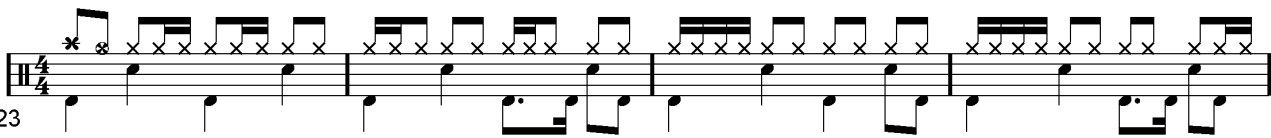
Refrain 1

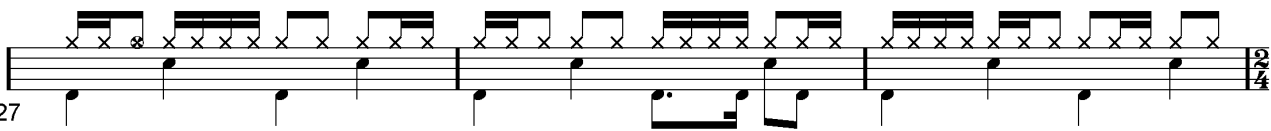
15

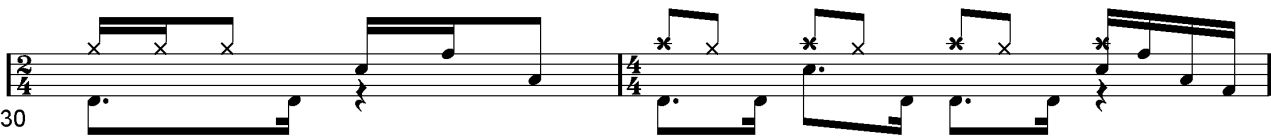
19

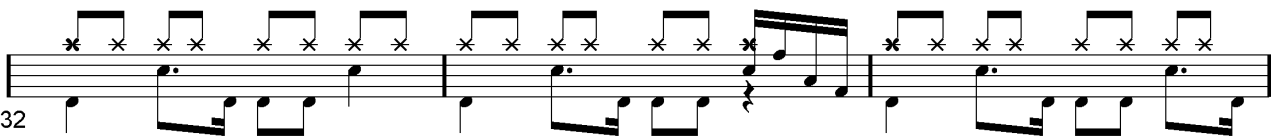
Tournez la page.....

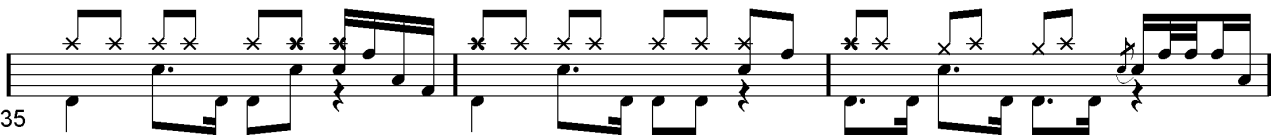
Partition batterie page 2:

23  Musical notation for measure 23, featuring a 4/4 time signature and a treble clef. The notation includes a series of eighth notes with 'x' marks above them, indicating cymbal hits, and a bass line with quarter notes.

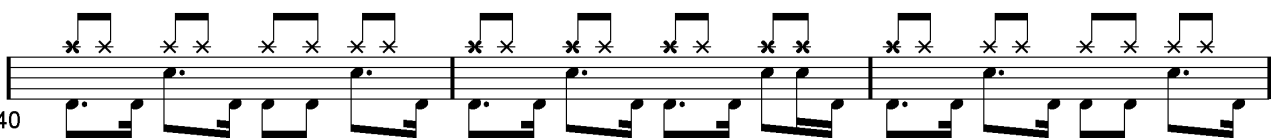
27  Musical notation for measure 27, continuing the pattern of eighth notes with 'x' marks and a bass line.

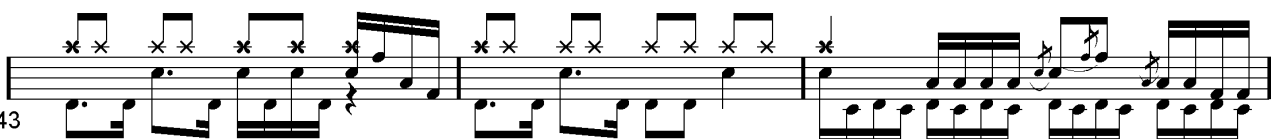
30  Musical notation for measure 30, showing a change in the bass line and the continuation of the cymbal pattern.

32  Musical notation for measure 32, featuring a more complex rhythmic pattern in the bass line.

35  Musical notation for measure 35, with a continuation of the eighth-note cymbal pattern and a steady bass line.


38  Musical notation for measure 38, introducing a triplet of eighth notes in the bass line.

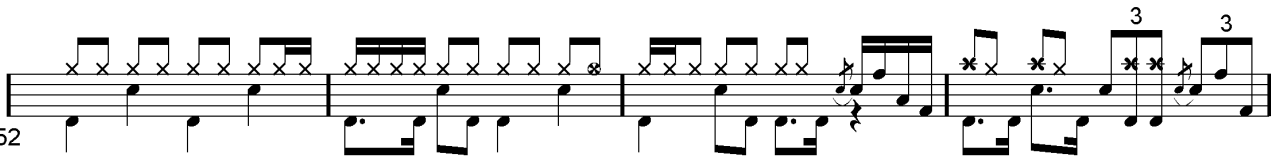
40  Musical notation for measure 40, showing a consistent rhythmic pattern with eighth notes and cymbal hits.

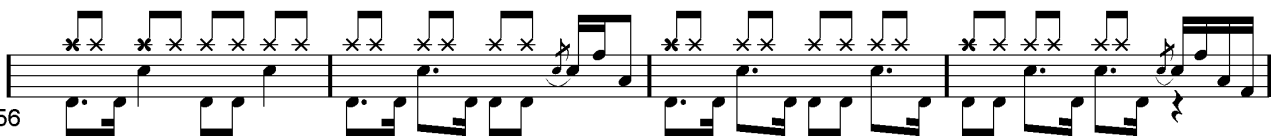
43  Musical notation for measure 43, concluding the page with a final rhythmic phrase.

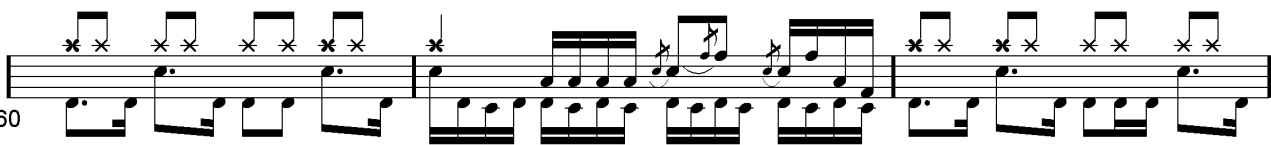
Partition batterie page 3:

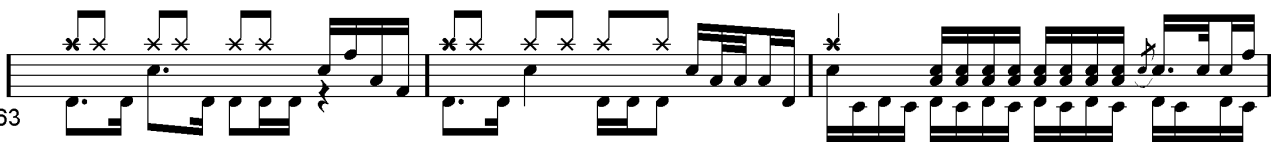
46 

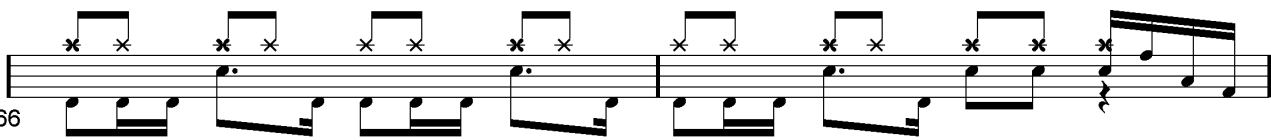
48 

52 

56 

60 

63 

66 

68 

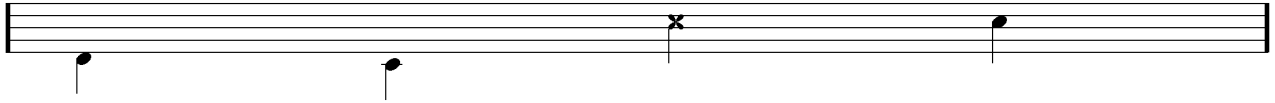
Écriture batterie:

bd 1

bd 2

rim-shot

sd

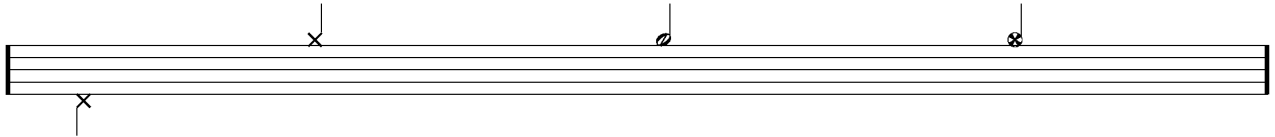


HH Pied

HH fermée

HH entrouverte

HH ouverte

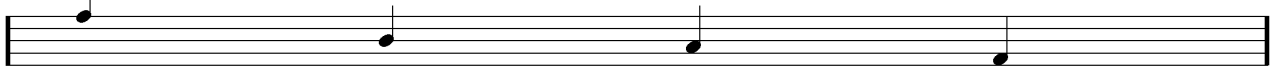


tom 1

tom 2

tom 3

tom 4

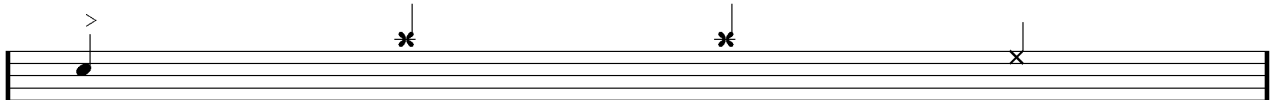


accent

note mutée

crash

cloche

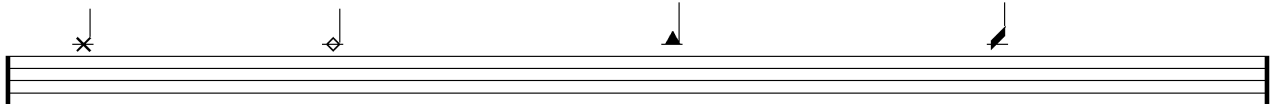


ride

dôme de cymbale

chinoise

splash



flas

note muette

