

Gold Calicoba:

Table des matières

Introduction:.....	2
Tablature basse page 1:.....	3
Tablature basse page 2:.....	4
Partition basse page 1:.....	5
Partition basse page 2:.....	6
Partition batterie page 1:.....	7
Partition batterie page 2:.....	8
Écriture batterie:.....	9

Introduction:

Une ligne de basse relativement facile, les seules difficultés sont les contretemps et les syncopes.

Pour la partie de batterie, la grosse difficulté c'est l'enchaînement rim-shot / caisse claire au début de chaque mesure à partir du premier couplet. Il y a également des contretemps à la grosse caisse, des breaks en doubles-croches et même un en en triple-croches.

Voici le lien pour écouter le morceau:

[Gold Calicoba](#)

Bon courage à tous !

Tablature basse page 1:

Gold Calicoba

Intro = 11 mesures sans la basse

1 12



Couplet 1

15



19



Couplet 2

23



27



Pré-Refrain 1

31



35



Refrain 1

40



44



Refrain 2

48



52



Tablature basse page 2:

Instrumental

56

56

Couplet 3

60

60

64

64

Pont

68

68

72

72

Pré-Refrain 2

77

77

81

81

Refrains 3 / 4 / 5

86

86

90

90

Final

110

110

Partition basse page 1:

Gold Calicoba

Intro = 11 mesures sans la basse

Musical notation for the Intro section, measures 1 to 12. The notation is in bass clef with a 4/4 time signature. Measure 1 is a whole rest. Measures 2-12 contain a sequence of eighth and quarter notes with rests.

Couplet 1

Musical notation for Couplet 1, measures 15 to 18. The notation consists of eighth and quarter notes with rests.

Musical notation for Couplet 1, measures 19 to 22. The notation consists of eighth and quarter notes with rests, ending with a double bar line and repeat sign.

Couplet 2

Musical notation for Couplet 2, measures 23 to 26. The notation consists of eighth and quarter notes with rests.

Musical notation for Couplet 2, measures 27 to 30. The notation consists of eighth and quarter notes with rests, ending with a double bar line and repeat sign.

Pré-Refrain 1

Musical notation for Pré-Refrain 1, measures 31 to 34. The notation consists of eighth and quarter notes with rests.

Musical notation for Pré-Refrain 1, measures 35 to 38. The notation consists of eighth and quarter notes with rests.

Refrain 1

Musical notation for Refrain 1, measures 40 to 43. The notation consists of eighth and quarter notes with rests.

Musical notation for Refrain 1, measures 44 to 47. The notation consists of eighth and quarter notes with rests, ending with a double bar line and repeat sign.

Refrain 2

Musical notation for Refrain 2, measures 48 to 51. The notation consists of eighth and quarter notes with rests.

Musical notation for Refrain 2, measures 52 to 55. The notation consists of eighth and quarter notes with rests.

Partition basse page 2:

Instrumental



Couplet 3



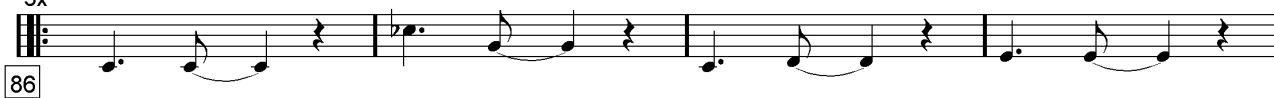
Pont



Pré-Refrain 2



3x Refrains 3 / 4 / 5



ad lib. Final



Partition batterie page 1:

Gold Calicoba

♩ = 122

Intro

1

claps

5

Couplets 1 / 2

15

19

1.

2.

30

Pré-Refrain 1

31

35

Refrains 1 / 2

40

44

1.

2.

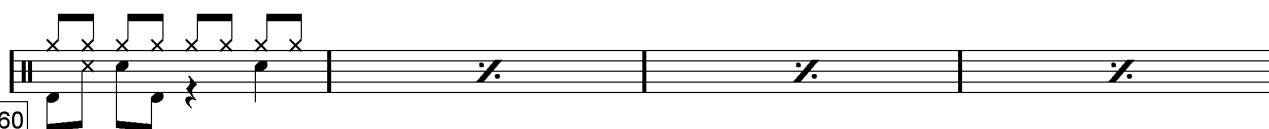
55

Instrumental

56

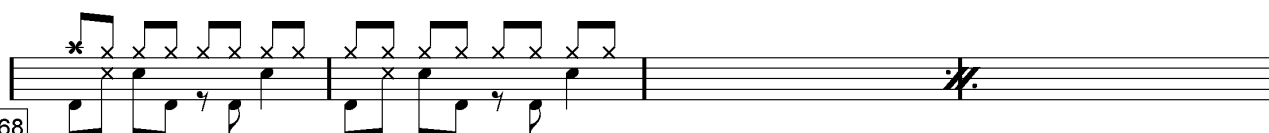
Partition batterie page 2:

Couplet 3

60 

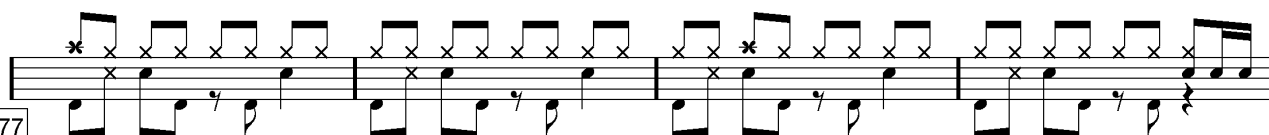
64 

Pont

68 

72 

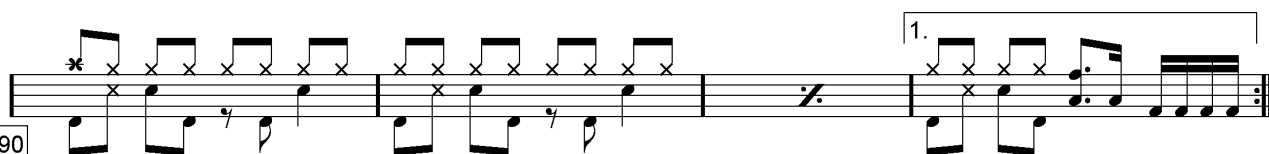
Pré-Refrain 2


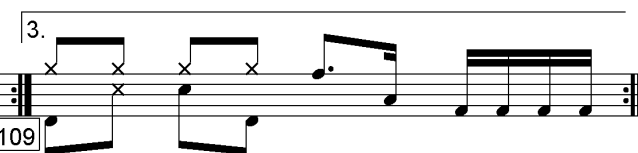
77 

81 

Refrains 3 / 4 / 5

86 

90 

101  109 

Final

ad lib. 110 

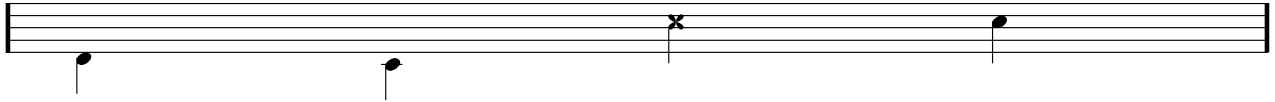
Écriture batterie:

bd 1

bd 2

rim-shot

sd

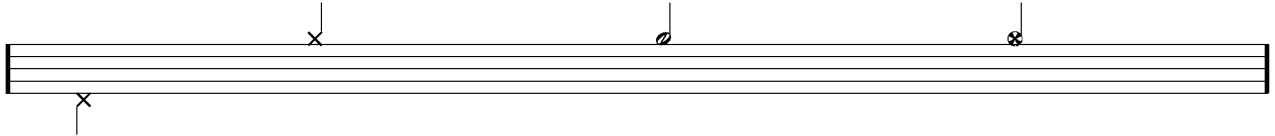


HH Pied

HH fermée

HH entrouverte

HH ouverte

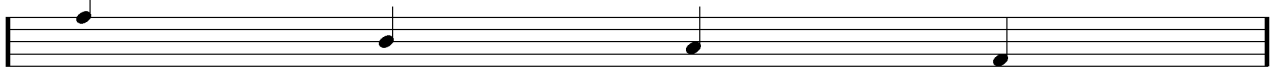


tom 1

tom 2

tom 3

tom 4

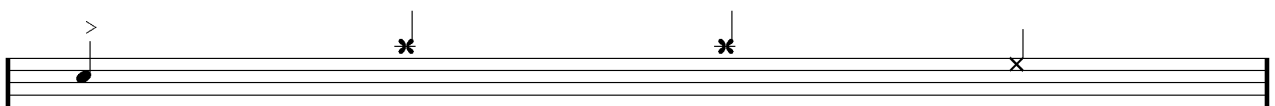


accent

note mutée

crash

cloche

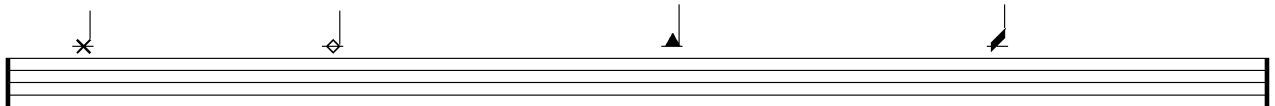


ride

dôme de cymbale

chinoise

splash



flas

note muette

