

Gary Moore The Hurt Inside:

Table des matières

Introduction:.....	2
Tablature basse 4 cordes page 1:.....	3
Tablature basse 4 cordes page 2:.....	4
Tablature basse 4 cordes page 3:.....	5
Tablature basse 5 cordes page 1:.....	6
Tablature basse 5 cordes page 2:.....	7
Tablature basse 5 cordes page 3:.....	8
Partition basse 4 cordes page 1:.....	9
Partition basse 4 cordes page 2:.....	10
Partition basse 4 cordes page 3:.....	11
Partition basse 5 cordes page 1:.....	12
Partition basse 5 cordes page 2:.....	13
Partition basse 5 cordes page 3:.....	14
Partition batterie page 1:.....	15
Partition batterie page 2:.....	16
Partition batterie page 3:.....	17
Partition batterie page 4:.....	18
Écriture batterie:.....	19

Introduction:

Une ligne de basse plus difficile qu'on pourrait le penser: même si elle est assez répétitive il y a pas mal de variantes et d'effets de jeu, les difficultés sont les contretemps, les doubles-notes, les glissés, les hammers, les notes muettes, les pull-offs et les syncopes.

Notez que j'ai écrit deux versions pour la ligne de basse: une pour basse 4 cordes et une pour basse 5 cordes.

Pour la partition de basse il y a trois bémols à la clef: le Sib, le Mib et le Lab (gamme majeure de Mib).

La partie de batterie est assez répétitive également, les difficultés sont les contretemps à la grosse caisse, les crescendos, les breaks en doubles-croches, un fla et les syncopes sur la cymbale crash, il y a également des passages en sextolets sur la charley et la caisse claire heureusement le tempo n'est pas trop rapide.

Voici le lien pour écouter le morceau:

[Gary Moore The Hurt Inside](#)

Bon courage à tous !

Tablature basse 4 cordes page 1:

Gary Moore The Hurt Inside

Intro

1

5

Couplet 1

9

13

Couplet 2

17

21

Pré-Refrain 1

25

Refrain 1

29

32

Couplet 3

35

39

Couplet 4

43

47

Tablature basse 5 cordes page 1:

Gary Moore The Hurt Inside

Intro

1

5

Couplet 1

9

13

Couplet 2

17

21

Pré-Refrain 1

25

Refrain 1

29

32

Couplet 3

35

39

Couplet 4

43

47

Tablature basse 5 cordes page 2:

Pré Refrain 2

51

Refrain 2

55

Pont

59

63

Couplet 5

67

71

Couplet 6

75

79

Pré-Refrain 3

83

Refrain 3

87

Refrain 4

91

Refrain 5

95

Tablature basse 5 cordes page 3:

98

98

Solo Guitare 1

100

100

104

104

Solo guitare 2

108

108

112

112

Solo Guitare 3

116

116

120

120

ad lib. Final

124

124

128

128

132

132

136

136

[Playback-sans-la-basse](#) [playback basse solo](#) [playback batterie solo](#) [playback basse batterie](#)

Partition basse 4 cordes page 1:

Gary Moore The Hurt Inside

Intro



Partition basse 4 cordes page 2:

Pré Refrain 2



Refrain 2



Pont



Couplet 5



Couplet 6



Pré-Refrain 3



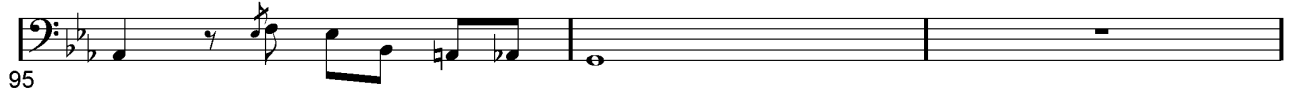
Refrain 3



Refrain 4



Refrain 5



Partition basse 4 cordes page 3:

98 

Solo Guitare 1

100 

104 

Solo guitare 2

108 

112 

Solo guitare 3

116 

120 

ad lib. Final

124 

128 

132 

136 

Partition basse 5 cordes page 1:

Gary Moore The Hurt Inside

Intro

1

5

Couplet 1

9

13

Couplet 2

17

21

Pré-Refrain 1

25

Refrain 1

29

32

Couplet 3

35

39

Couplet 4

43

47

Partition basse 5 cordes page 2:

Pré Refrain 2

51 

Refrain 2

55 

Pont

59 

63 

Couplet 5

67 

71 

Couplet 6

75 

79 

Pré-Refrain 3

83 

Refrain 3

87 

Refrain 4

91 

Refrain 5

95 

Partition basse 5 cordes page 3:

98 

Solo Guitare 1

100 

104 

Solo Guitare 2

108 

112 

Solo Guitare 3

116 

120 

ad lib. Final

124 

128 

132 

136 

Partition batterie page 1:

Gary Moore The hurt Inside

♩ = 96

Intro

1

5

Couplet 1

9

13

Couplet 2

17

21

Pré-Refrain 1

25

Refrain 1

29

32

[Playback-sans-batterie](#) [playback basse solo](#) [playback batterie solo](#) [playback basse batterie](#)

Partition batterie page 2:

Couplet 3

35

39

Couplet 4

43

47

Pré-Refrain 2

51

Refrain 2

55

Pont

59

63

[Playback-sans-batterie](#) [playback basse solo](#) [playback batterie solo](#) [playback basse batterie](#)

Partition batterie page 3:

Couplet 5

67

Musical notation for Couplet 5, measures 67-70. The notation shows a drum set with various rhythmic patterns and rests.

71

Musical notation for Couplet 5, measures 71-74. The notation shows a drum set with various rhythmic patterns and rests.

Couplet 6

75

Musical notation for Couplet 6, measures 75-78. The notation shows a drum set with various rhythmic patterns and rests.

79

Musical notation for Couplet 6, measures 79-82. The notation shows a drum set with various rhythmic patterns and rests.

Pré-Refrain 3

83

Musical notation for Pré-Refrain 3, measures 83-86. The notation shows a drum set with various rhythmic patterns and rests.

Refrain 3

87

Musical notation for Refrain 3, measures 87-90. The notation shows a drum set with various rhythmic patterns and rests.

Refrain 4

91

Musical notation for Refrain 4, measures 91-94. The notation shows a drum set with various rhythmic patterns and rests.

Refrain 5

95

Musical notation for Refrain 5, measures 95-98. The notation shows a drum set with various rhythmic patterns and rests, including triplets.

Solo Guitare 1

100

Musical notation for Solo Guitare 1, measures 100-103. The notation shows a guitar with various rhythmic patterns and rests.

Partition batterie page 4:

104

Solo Guitare 2

108

112

Solo Guitare 3

116

120

Final

ad lib. 124

128

132

136

Écriture batterie:

The image displays six horizontal staves of musical notation, each representing a different category of drum sounds. The notation uses various symbols such as stems, dots, and 'x' marks to represent specific sounds on a five-line staff.

- bd 1**: Snare drum 1, represented by a stem with a dot.
- bd 2**: Snare drum 2, represented by a stem with a dot.
- rim-shot**: Represented by a stem with an 'x' above it.
- sd**: Snare drum, represented by a stem with a dot.
- HH Pied**: Hi-hat closed, represented by a stem with an 'x' above it.
- HH fermée**: Hi-hat closed, represented by a stem with an 'x' above it.
- HH entrouverte**: Hi-hat open, represented by a stem with a note head.
- HH ouverte**: Hi-hat open, represented by a stem with a note head.
- tom 1**: Tom 1, represented by a stem with a note head.
- tom 2**: Tom 2, represented by a stem with a note head.
- tom 3**: Tom 3, represented by a stem with a note head.
- tom 4**: Tom 4, represented by a stem with a note head.
- accent**: Represented by a stem with a note head and an accent (>) above it.
- note mutée**: Muted note, represented by a stem with a note head and a dot above it.
- crash**: Represented by a stem with an 'x' above it.
- cloche**: Bell, represented by a stem with an 'x' above it.
- ride**: Represented by a stem with an 'x' above it.
- dôme de cymbale**: Cymbal dome, represented by a stem with a diamond above it.
- chinoise**: Chinese cymbal, represented by a stem with a triangle above it.
- splash**: Represented by a stem with a note head and a slash above it.
- fla**: Flambé, represented by a stem with a note head and a slash above it.
- note muette**: Mute note, represented by a stem with a note head.
- Claps**: Claps, represented by a stem with a triangle above it.
- Roulé = 2 coups d'1 seule main**: Roll, represented by a stem with a note head and a slash above it.