

**Gary Moore Out In The Fields:**

**Table des matières**

Introduction:.....	2
Tablature page 1:.....	3
Tablature page 2:.....	4
Tablature page 3:.....	5
Tablature page 4:.....	6
Partition page 1:.....	7
Partition page 2:.....	8
Partition page 3:.....	9
Partition page 4:.....	10
Batterie page 1:.....	11
Batterie page 2:.....	12
Batterie page 3:.....	13
Batterie page 4:.....	14
Batterie page 5:.....	15
Écriture batterie:.....	16
Titres disponibles:.....	17
Titres en préparation:.....	17
Conclusion:.....	17

### **Introduction:**

Il y a de pas mal de parties différentes dans ce morceau du coup il y beaucoup de pages dans ce dossier (4 pour la tablature et la partition et 5 pour la batterie).

La grande difficulté de ce morceau c'est le tempo qui est rapide.

La partie de basse contient beaucoup de parties différentes mais elle reste assez simple, il y a juste quelques glissés sur le pont 1.

Pour la partition il y a 1 bémol à la clef: le Sib.

Pour la partie de batterie les plus grosses difficultés ce sont les crescendos, quelques breaks en doubles-croches et des flas sur la caisse claire, il y a également deux passages en doubles-croches à la grosse caisse sur le couplet 1 et le refrain 2 que j'ai écrit pour 2 grosses caisses ou une double pédale mais les batteurs les plus aguerris pourront peut-être jouer ces passages avec une seule pédale.

Voici le lien pour écouter le morceau:

[gary moore out in the fields](#)

Bon courage à tous !

## Tablature page 1:

Intro 1 

Intro 2



Couplet 1

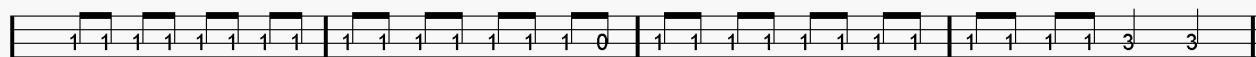
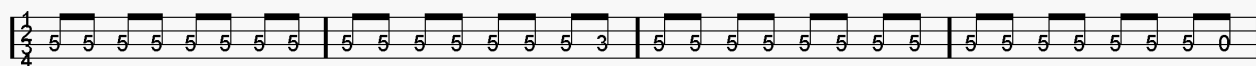


Refrain 1

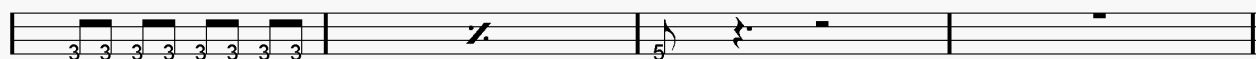
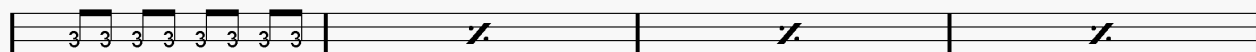
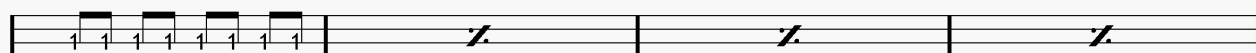
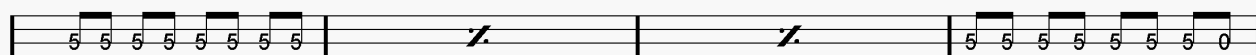


## Tablature page 2:

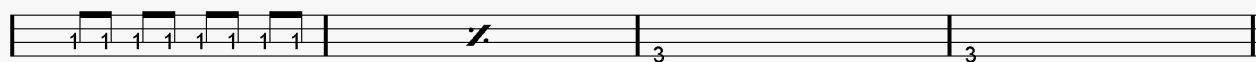
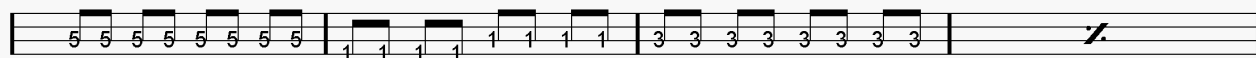
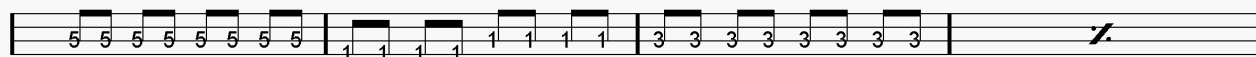
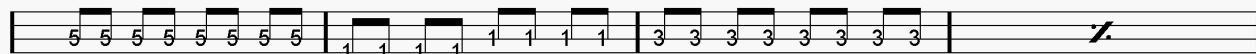
### Gimmick 1



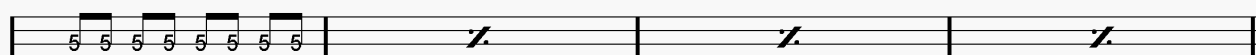
### Couplet 2



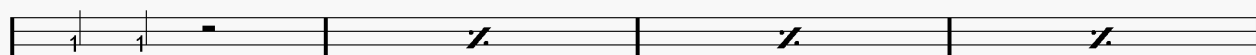
### Refrain 2



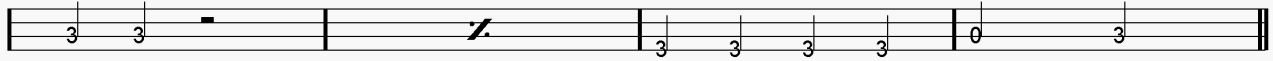
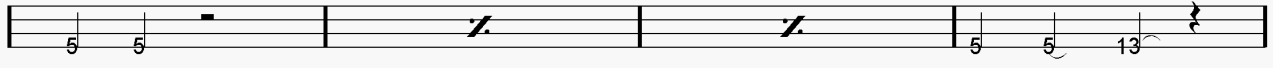
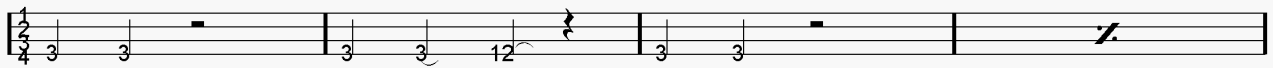
### Gimmick 2



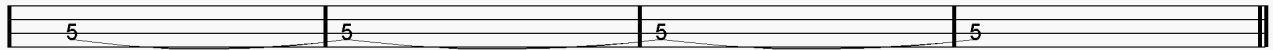
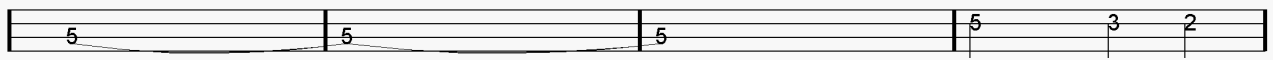
### Pont 1



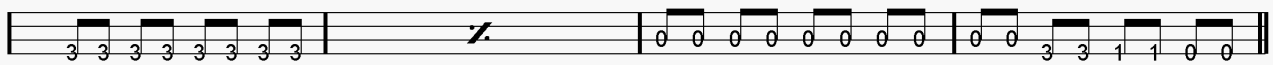
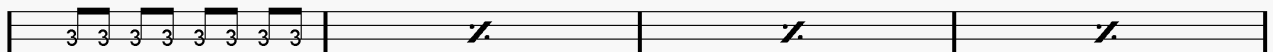
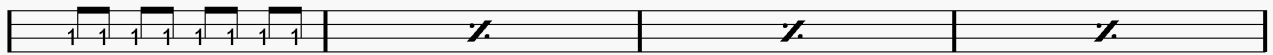
**Tablature page 3:**



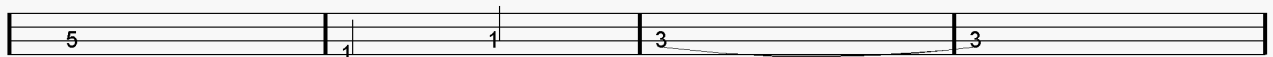
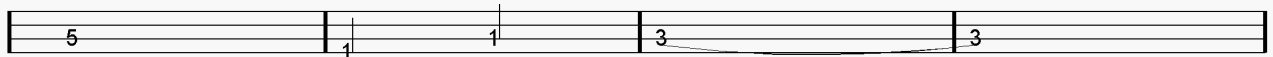
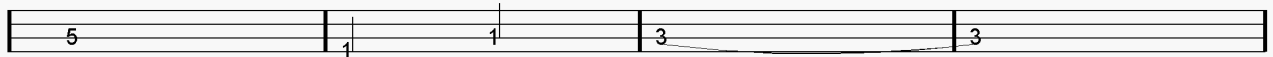
**Pont 2**



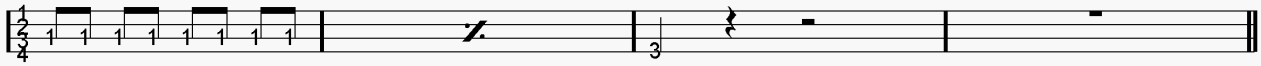
**Chorus**



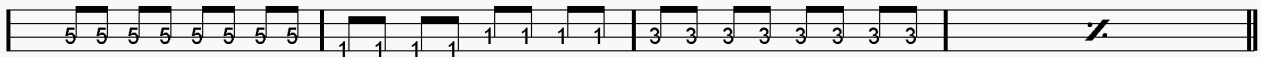
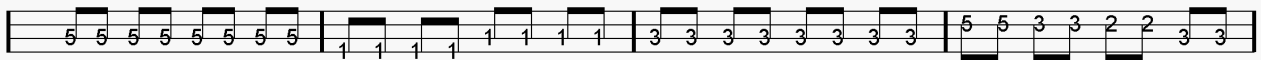
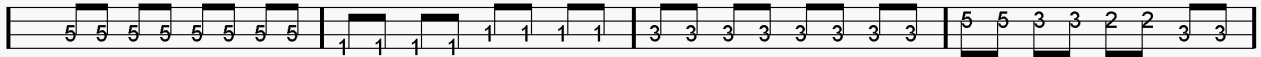
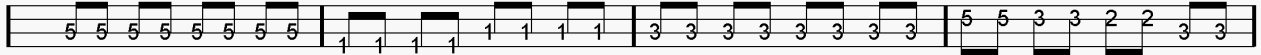
**Pont 3**



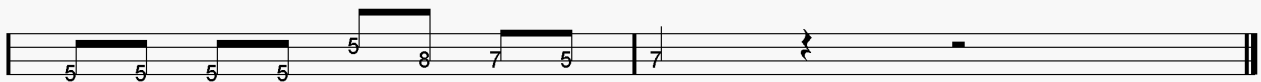
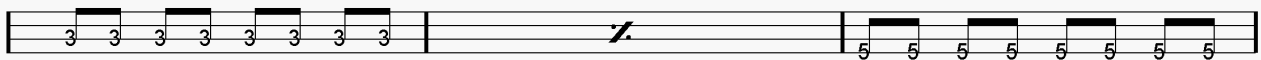
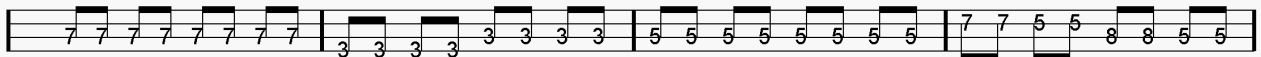
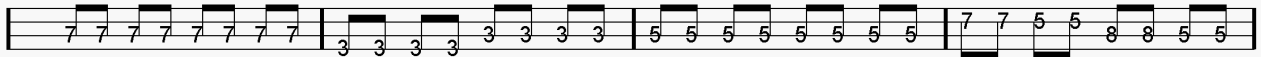
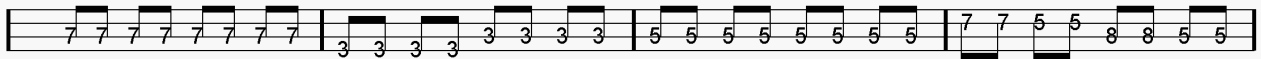
**Tablature page 4:**



**Refrain 3**



**Fin**



# Partition page 1:

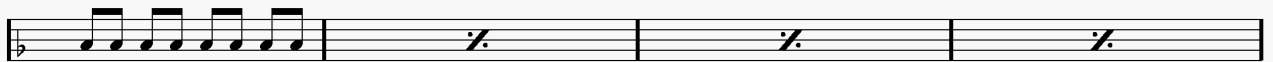
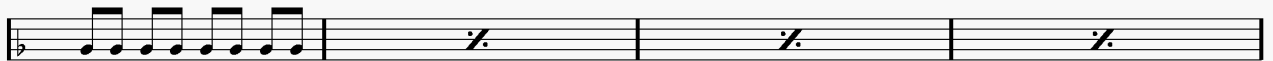
Intro 1



Intro 2



Couplet 1



Refrain 1



**Partition page 2:**

Gimmick 1

Two staves of musical notation. The top staff is in bass clef with a key signature of one flat (B-flat). It contains four measures of music: a quarter-note bass line and a half-note treble line. The bottom staff is in bass clef and contains four measures of a continuous eighth-note treble line.

Couplet 2

Four staves of musical notation. The top staff is in bass clef with a key signature of one flat. It contains four measures: a quarter-note bass line, two measures of rests with a slash, and a quarter-note treble line. The second and third staves are in bass clef and contain four measures each: a quarter-note treble line, two measures of rests with a slash, and a quarter-note treble line. The bottom staff is in bass clef and contains four measures: a quarter-note treble line, two measures of rests with a slash, and a quarter-note treble line.

Refrain 2

Four staves of musical notation. The top staff is in bass clef with a key signature of one flat. It contains four measures: a quarter-note bass line, a quarter-note treble line, a quarter-note treble line, and a quarter-note treble line. The second and third staves are in bass clef and contain four measures each: a quarter-note bass line, a quarter-note treble line, a quarter-note treble line, and a quarter-note treble line. The bottom staff is in bass clef and contains four measures: a quarter-note treble line, two measures of rests with a slash, and a quarter-note treble line.

Gimmick 2

Two staves of musical notation. The top staff is in bass clef with a key signature of one flat. It contains four measures: a quarter-note bass line, two measures of rests with a slash, and a quarter-note treble line. The bottom staff is in bass clef and contains four measures of a continuous eighth-note treble line.



### Partition page 3:

#### Pont 1

Musical notation for Pont 1, consisting of four staves. The first staff begins with a bass clef and a key signature of one flat. The notation includes quarter notes, rests, and repeat signs (double bar lines with a diagonal slash) in the second, third, and fourth measures of each staff.

#### Pont 2

Musical notation for Pont 2, consisting of two staves. The notation features long, horizontal lines above the notes, indicating sustained or glissando passages. The first staff shows a sequence of notes with a long line above them, and the second staff continues this pattern.

#### Chorus

Musical notation for the Chorus, consisting of four staves. The first staff begins with a bass clef and a key signature of one flat. The notation includes eighth notes, quarter notes, and repeat signs (double bar lines with a diagonal slash) in the second, third, and fourth measures of each staff.

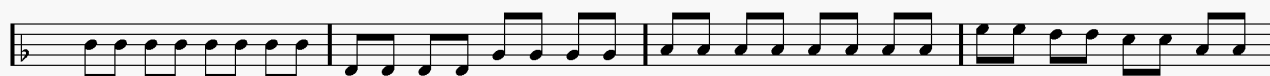
#### Pont 3

Musical notation for Pont 3, consisting of two staves. The notation features long, horizontal lines above the notes, indicating sustained or glissando passages. The first staff shows a sequence of notes with a long line above them, and the second staff continues this pattern.

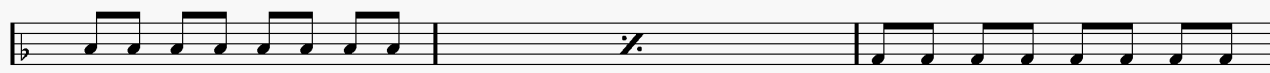
Partition page 4:



Refrain 3

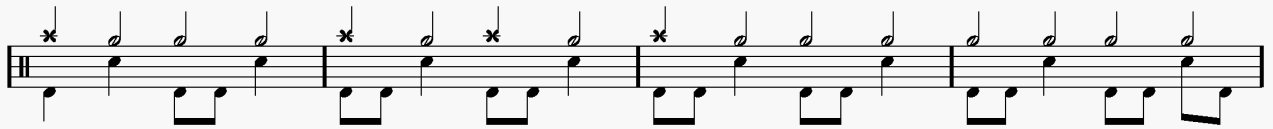


Fin





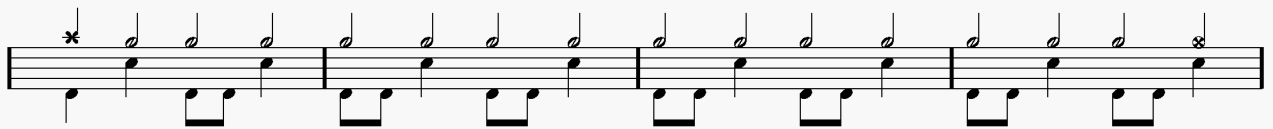
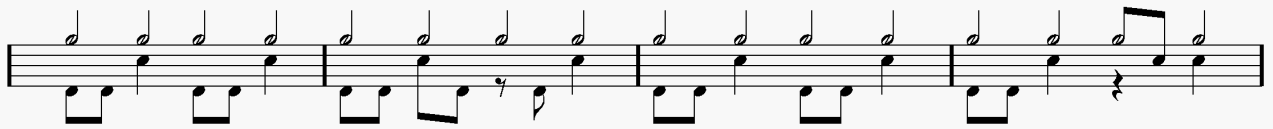
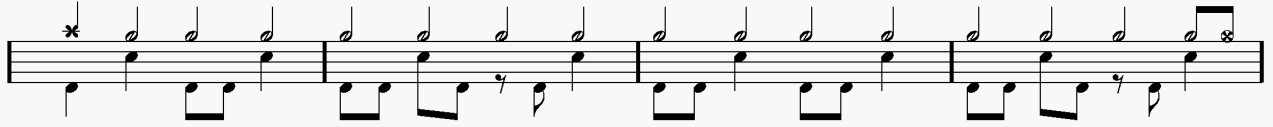
## Batterie page 2:



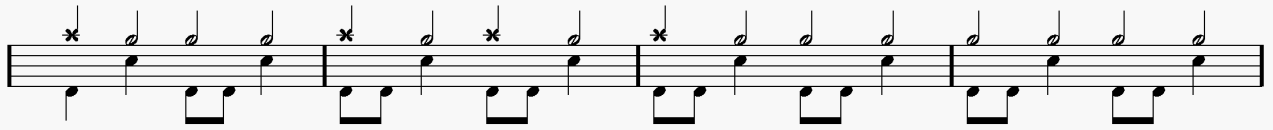
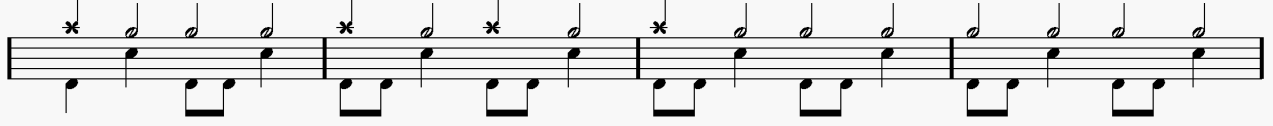
### Gimmick 1



### Couplet 2



### Refrain 2



**Batterie page 3:**

The first two staves of the drum part. The first staff contains four measures of music, each starting with an asterisk. The second staff contains three measures, with the first measure starting with an asterisk and ending with a double bar line. The second and third measures of the second staff contain rests.

Gimmick 2

A single staff of music for the Gimmick 2 section, starting with an asterisk and ending with a double bar line.

Pont 1

The first staff of the Pont 1 section, starting with an asterisk and ending with a double bar line. It includes a double bar line with a slash in the middle of the second measure.

The second staff of the Pont 1 section, ending with a double bar line. It includes a double bar line with a slash in the middle of the second measure.

The third staff of the Pont 1 section, ending with a double bar line.

The fourth staff of the Pont 1 section, ending with a double bar line.

Pont 2

The first staff of the Pont 2 section, starting with an asterisk and ending with a double bar line. It contains rests in the first three measures.

The second staff of the Pont 2 section, starting with an asterisk and ending with a double bar line. It contains rests in the first three measures, followed by a rhythmic pattern in the last measure.

Chorus

The Chorus section, consisting of two staves. The first staff starts with an asterisk and ends with a double bar line. It includes two double bar lines with slashes in the middle of the second and third measures. The second staff is empty.

**Batterie page 4:**

First musical staff with a treble clef and a double bar line at the beginning. It contains a sequence of eighth notes with asterisks above them, followed by a double bar line and a repeat sign.

Second musical staff with a treble clef and a double bar line at the beginning. It contains a sequence of eighth notes with asterisks above them, followed by a double bar line and a repeat sign.

Third musical staff with a treble clef and a double bar line at the beginning. It contains a sequence of eighth notes with asterisks above them, followed by a double bar line and a repeat sign.

Pont 3

Fourth musical staff with a treble clef and a double bar line at the beginning. It contains a sequence of eighth notes with asterisks above them, followed by a double bar line and a repeat sign.

Fifth musical staff with a treble clef and a double bar line at the beginning. It contains a sequence of eighth notes with asterisks above them, followed by a double bar line and a repeat sign.

Sixth musical staff with a treble clef and a double bar line at the beginning. It contains a sequence of eighth notes with asterisks above them, followed by a double bar line and a repeat sign.

Seventh musical staff with a treble clef and a double bar line at the beginning. It contains a sequence of eighth notes with asterisks above them, followed by a double bar line and a repeat sign.

Refrain 3

Eighth musical staff with a treble clef and a double bar line at the beginning. It contains a sequence of eighth notes with asterisks above them, followed by a double bar line and a repeat sign.

Ninth musical staff with a treble clef and a double bar line at the beginning. It contains a sequence of eighth notes with asterisks above them, followed by a double bar line and a repeat sign.

Tenth musical staff with a treble clef and a double bar line at the beginning. It contains a sequence of eighth notes with asterisks above them, followed by a double bar line and a repeat sign.

**Batterie page 5:**

The image displays six staves of drum notation. The notation includes various rhythmic patterns, rests, and dynamic markings. The first staff begins with a double bar line and a key signature of one flat. The second staff starts with the word "Fin" above the first measure. The notation uses standard drum notation symbols, including asterisks for accents, vertical lines for stems, and various note values. Rests are indicated by a double slash with a diagonal line. The piece concludes with a double bar line and repeat dots.

## Écriture batterie:

The image displays six horizontal musical staves, each representing a different category of drum notation. Each staff is labeled with its respective instrument or technique above it. The notation includes various note heads, stems, and symbols like 'x' and '>' to represent different sounds and dynamics.

- bd 1**: A single quarter note on a five-line staff.
- bd 2**: A single quarter note on a five-line staff.
- rim-shot**: A quarter note on a five-line staff with an 'x' above the note head.
- sd**: A single quarter note on a five-line staff.
- HH Pied**: A quarter note on a five-line staff with an 'x' above the note head.
- HH fermée**: A quarter note on a five-line staff with an 'x' above the note head.
- HH entrouverte**: A quarter note on a five-line staff with a slash above the note head.
- HH ouverte**: A quarter note on a five-line staff with a slash above the note head.
- tom 1**: A single quarter note on a five-line staff.
- tom 2**: A single quarter note on a five-line staff.
- tom 3**: A single quarter note on a five-line staff.
- tom 4**: A single quarter note on a five-line staff.
- accent**: A quarter note on a five-line staff with an accent (>) above the note head.
- note mutée**: A quarter note on a five-line staff with a dot above the note head and an 'x' above the note head.
- crash**: A quarter note on a five-line staff with an 'x' above the note head.
- cloche**: A quarter note on a five-line staff with an 'x' above the note head.
- ride**: A quarter note on a five-line staff with an 'x' above the note head.
- dôme de cymbale**: A quarter note on a five-line staff with a diamond above the note head.
- chinoise**: A quarter note on a five-line staff with a triangle above the note head.
- splash**: A quarter note on a five-line staff with a triangle above the note head.
- fla**: A quarter note on a five-line staff with a slash above the note head.
- note muette**: A quarter note on a five-line staff with a slash above the note head.
- Claps**: A quarter note on a five-line staff with a triangle above the note head.
- Roulé = 2 coups d'1 seule main**: A quarter note on a five-line staff with a slash above the note head.



**Titres disponibles:**

Cliquez sur ce lien pour voir la liste des titres disponibles:

[titres disponibles](#)

**Titres en préparation:**

Cliquez sur ce lien pour voir la liste des titres en préparation:

[titres en préparation](#)

**Conclusion:**

Si vous souhaitez faire des commentaires sur ce dossier vous pouvez me contacter sur ma messagerie: [emmanuel.somenzi@free.fr](mailto:emmanuel.somenzi@free.fr)