

Def Leppard Women:

Table des matières

Introduction:.....	2
Tablature basse page 1:.....	3
Tablature basse page 2:.....	4
Partition basse page 1:.....	5
Partition basse page 2:.....	6
Partition batterie page 1:.....	7
Partition batterie page 2:.....	8
Partition batterie page 3:.....	9
Partition batterie page 4:.....	10
Écriture batterie:.....	11

Introduction:

Les principales difficultés de cette ligne de basse sont les accents, les contretemps et les syncopes.

Pour la partie de batterie, les plus grosses difficultés sont les contretemps à la grosse caisse, les syncopes sur la cymbale crash et les breaks en triples-croches (bien que le tempo soit relativement long), pensez à muter la cymbale crash au début de l'intro et sur le pont 1 (notes avec un point indiqué au dessus).

Voici le lien pour écouter le morceau:

[Def Leppard Women](#)

Bon courage à tous !

Tablature basse page 1:

Def Leppard Women

Intro guitare

Intro

1 3

5

9

Couplet 1

13

17

☼ Couplets 2 / 3

21

25

Pré-Refains 1 / 2

29

Refrains 1 / 2

33

37

Instrumental

41

⊕ Pont 1

65

Tablature basse page 2:

Solo guitare

68

72

Pont 2

76

80

Pont 3

84

88

92

96

100

Final

104

108

112

116

Fin

Partition basse page 1:

Def Leppard Women

Intro guitare

Intro

1 3

5

9

Couplet 1

13

17

§ Couplets 2 / 3

21

25

Pré-Refains 1 / 2

29

Refrains 1 / 2

33

37

Instrumental

41

⊕ Pont 1

65

Partition basse page 2:

Solo guitare

68

72

Pont 2

76

80

Pont 3

84

88

92

96

100

Final

104

108

112

Fin

116

118

Partition batterie page 1:

Def Leppard Women

♩ = 92

Intro guitare

Intro

1 3

5

9

Couplet 1

13

17

Couplet 2

21

25

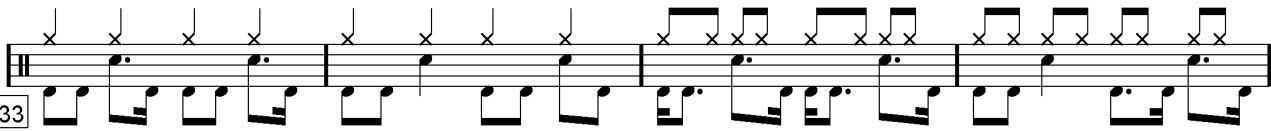
Pré-Refrain 1

29

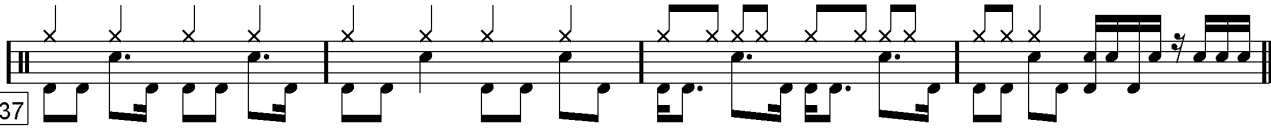
Partition batterie page 2:

Refrain 1

33

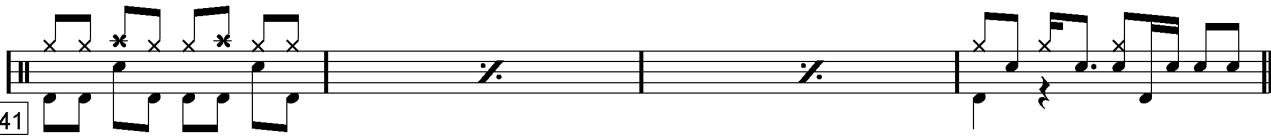


37



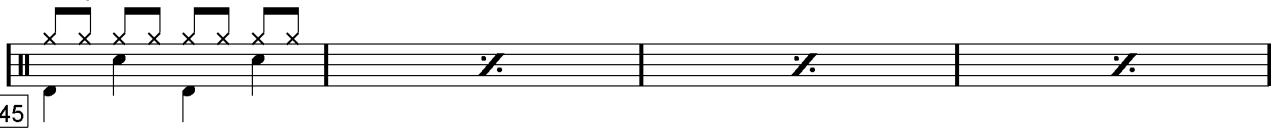
Instrumental

41

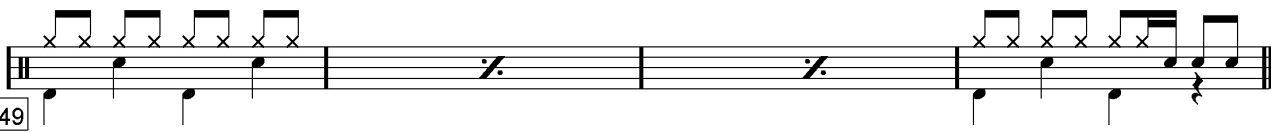


Couplet 2

45

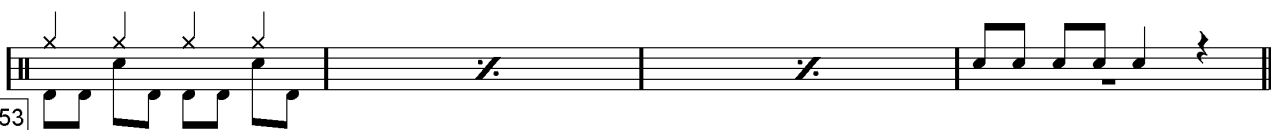


49



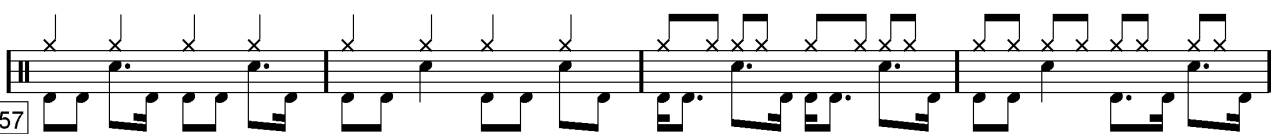
Prét-Refrain 2

53

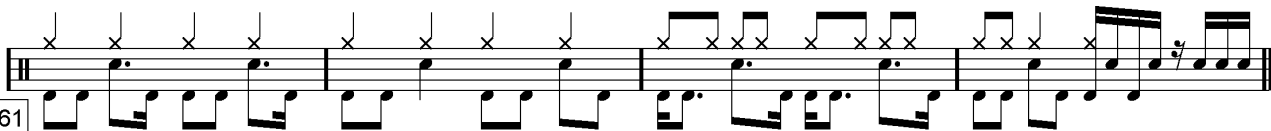


Refrain 2

57

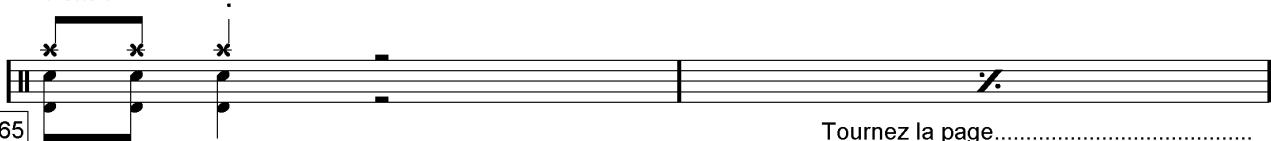


61



Pont 1

65



Tournez la page.....

Partition batterie page 3:

67

Musical notation for measure 67, featuring a drum set staff with a snare drum and a bass drum. The notation includes a snare drum hit on the first beat, followed by a bass drum hit on the second beat, and a snare drum hit on the third beat. The rest of the measure is empty.

Solo guitare

68

Musical notation for measure 68, featuring a guitar staff with a snare drum and a bass drum. The notation includes a snare drum hit on the first beat, followed by a bass drum hit on the second beat, and a snare drum hit on the third beat. The rest of the measure is empty.

72

Musical notation for measure 72, featuring a drum set staff with a snare drum and a bass drum. The notation includes a snare drum hit on the first beat, followed by a bass drum hit on the second beat, and a snare drum hit on the third beat. The rest of the measure is empty.

Pont 2

76

Musical notation for measure 76, featuring a drum set staff with a snare drum and a bass drum. The notation includes a snare drum hit on the first beat, followed by a bass drum hit on the second beat, and a snare drum hit on the third beat. The rest of the measure is empty.

80

Musical notation for measure 80, featuring a drum set staff with a snare drum and a bass drum. The notation includes a snare drum hit on the first beat, followed by a bass drum hit on the second beat, and a snare drum hit on the third beat. The rest of the measure is empty.

Pont 3

84

Musical notation for measure 84, featuring a drum set staff with a snare drum and a bass drum. The notation includes a snare drum hit on the first beat, followed by a bass drum hit on the second beat, and a snare drum hit on the third beat. The rest of the measure is empty.

88

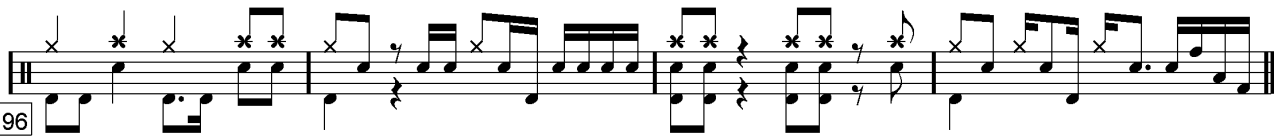
Musical notation for measure 88, featuring a drum set staff with a snare drum and a bass drum. The notation includes a snare drum hit on the first beat, followed by a bass drum hit on the second beat, and a snare drum hit on the third beat. The rest of the measure is empty.

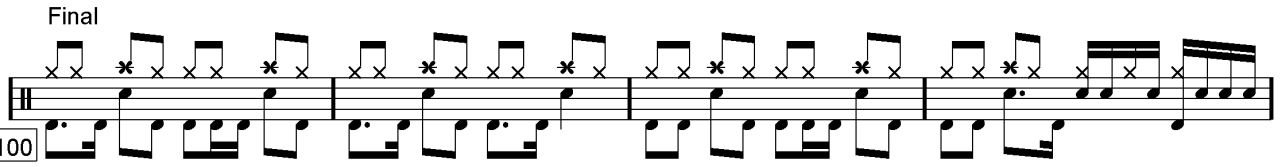
Refrain 3

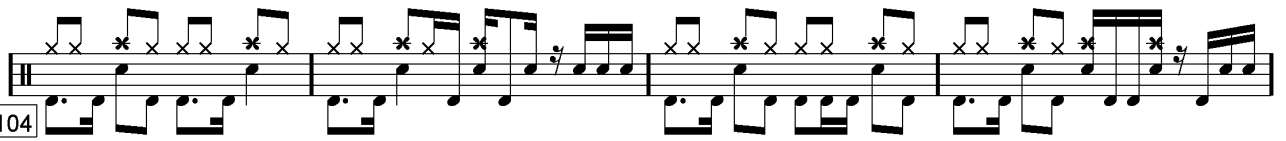
92

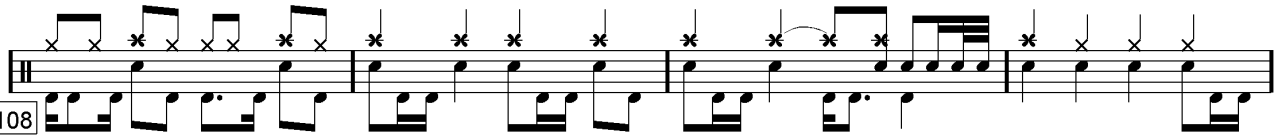
Musical notation for measure 92, featuring a drum set staff with a snare drum and a bass drum. The notation includes a snare drum hit on the first beat, followed by a bass drum hit on the second beat, and a snare drum hit on the third beat. The rest of the measure is empty.

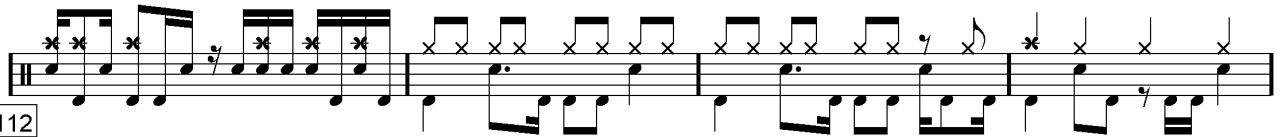
Partition batterie page 4:

96  Musical notation for measures 96-99. The notation includes various rhythmic patterns such as eighth and sixteenth notes, rests, and dynamic markings like accents and asterisks.

Final
100  Musical notation for measures 100-103. The word "Final" is written above the staff. The notation features a mix of rhythmic values and dynamic markings.

104  Musical notation for measures 104-107. The notation continues with complex rhythmic patterns and dynamic markings.

108  Musical notation for measures 108-111. The notation includes various rhythmic patterns and dynamic markings.

112  Musical notation for measures 112-115. The notation features a mix of rhythmic values and dynamic markings.

116  Musical notation for measures 116-118. The word "Fin" is written above the staff. The notation concludes with a final cadence.

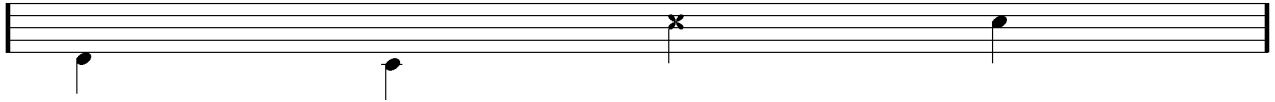
Écriture batterie:

bd 1

bd 2

rim-shot

sd

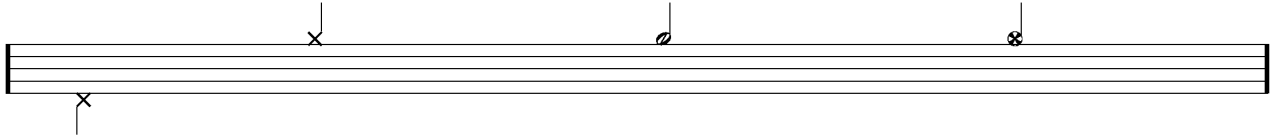


HH Pied

HH fermée

HH entrouverte

HH ouverte

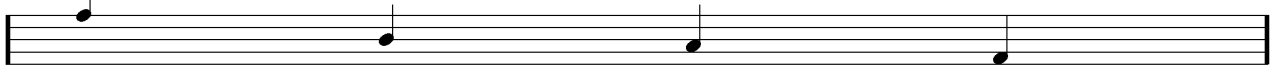


tom 1

tom 2

tom 3

tom 4

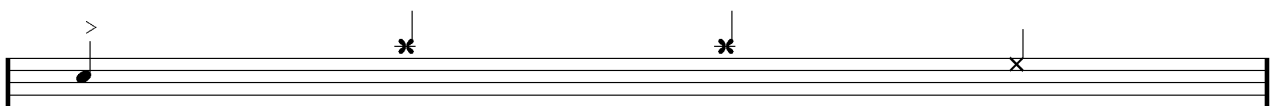


accent

note mutée

crash

cloche

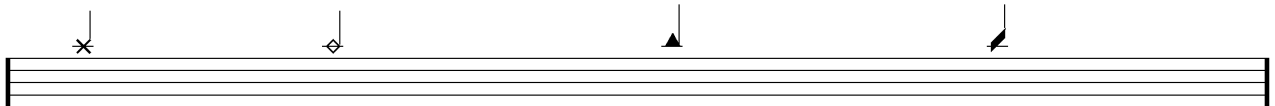


ride

dôme de cymbale

chinoise

splash



flas

note muette

