

Cinderella Shake Me:

Table des matières

Introduction:.....	2
Tablature basse page 1:.....	3
Tablature basse page 2:.....	4
Tablature basse page 2:.....	5
Partition basse page 1:.....	6
Partition basse page 2:.....	7
Partition basse page 3:.....	8
Partition batterie version 1 page 1:.....	9
Partition batterie version 1 page 2:.....	10
Partition batterie version 1 page 3:.....	11
Partition batterie version 2 page 1:.....	12
Partition batterie version 2 page 2:.....	13
Partition batterie version 2 page 3:.....	14
Écriture batterie:.....	15

Introduction:

Une ligne de basse relativement facile mais pour la faire sonner correctement il faut respecter les accents, les glissés et la durée des notes dans les refrains, les autres difficultés sont les contretemps et les syncopes. **Je me sers d'un logiciel pour isoler les parties de basse et de batterie mais ce n'est pas efficace à 100%: dans ce morceau pour la partie de basse solo il y a des glissés dans le gimmick qui correspondent à la partie d'une des deux guitares (mesures 39 et 40) !**

Pour la partie de batterie il y a des contretemps à la grosse caisse, des syncopes sur la cymbale crash, des flas et des breaks en doubles-croches sur la caisse claire.

Notez qu'il y a plusieurs mesures avec une cloche jouée sur chaque temps (Intro / Couplets / Gimmick / Pont 1 / etc.) mais elle est jouée en plus de la cymbale charleston (elle a probablement été ajoutée en studio par le batteur ou un autre membre du groupe) c'est pour cette raison que je vous propose deux versions pour la partie de batterie:

- version 1: la partition de batterie est écrite sans la cloche.
- version 2: la partition de batterie est écrite avec la cloche.

Voici le lien pour écouter le morceau:

[Cinderella Shake Me](#)

Bon courage à tous !

Tablature basse page 1:

Cinderella Shake Me

Intro Batterie

Musical notation for the drum introduction. It consists of two measures in 2/4 time. The first measure is a whole rest. The second measure contains a triplet of eighth notes, each marked with an accent (>).

Intro

Musical notation for the bass introduction. It consists of four measures in 2/4 time. The first three measures are whole rests. The fourth measure contains a quarter note G (2) followed by a quarter rest.

Intro (suite) / Couplet 1

Musical notation for the continuation of the intro and the first couplet. It consists of four measures in 2/4 time. The first measure is a triplet of eighth notes (2, 3, 4) marked with an accent (>) and labeled 'glissé'. The second measure is a triplet of eighth notes (2, 3, 4) marked with an accent (>) and labeled 'glissé'. The third measure is a triplet of eighth notes (2, 3, 4) marked with an accent (>) and labeled 'glissé'. The fourth measure is a triplet of eighth notes (2, 3, 4) marked with an accent (>) and labeled 'glissé'.

Pré-Refrain 1

Musical notation for the first pre-chorus. It consists of four measures in 2/4 time. The first measure contains eighth notes (2, 2, 2, 2, 2, 2, 2, 3) with an accent (>). The second measure contains eighth notes (3, 3, 3, 3, 3, 3, 3, 0) with an accent (>). The third measure contains eighth notes (0, 0, 0, 0, 0, 3, 4, 5) with an accent (>). The fourth measure contains eighth notes (5, 5, 2, 0, 5, 0, 3, 2) with an accent (>).

Musical notation for the continuation of the first pre-chorus. It consists of four measures in 2/4 time. The first measure contains eighth notes (2, 2, 2, 2, 2, 2, 2, 3) with an accent (>). The second measure contains eighth notes (3, 3, 3, 3, 3, 3, 3, 0) with an accent (>). The third measure contains eighth notes (0, 0, 0, 0, 0, 3, 4, 0) with an accent (>). The fourth measure contains eighth notes (5, 5, 5, 5, 5, 5, 5, 5) with an accent (>).

Refrain 1

Musical notation for the first refrain. It consists of four measures in 2/4 time. The first measure contains eighth notes (2, 2, 2, 2, 0) with an accent (>). The second measure contains eighth notes (0, 3, 4, 0, 0, 3, 4, 0) with an accent (>). The third measure contains eighth notes (2, 2, 2, 2, 2, 2, 2, 0) with an accent (>). The fourth measure contains eighth notes (0, 3, 4, 5, 5, 0, 3, 0) with an accent (>).

Musical notation for the continuation of the first refrain. It consists of four measures in 2/4 time. The first measure contains eighth notes (2, 2, 2, 2, 2, 2, 2, 0) with an accent (>). The second measure contains eighth notes (0, 3, 4, 0, 0, 3, 4, 0) with an accent (>). The third measure contains eighth notes (5, 5, 5, 5, 5, 5, 5, 5) with an accent (>). The fourth measure contains eighth notes (5, 5, 5, 5, 5, 5, 5, 5) with an accent (>).

Gimmick

Musical notation for the 'Gimmick' section. It consists of four measures in 2/4 time. The first measure is a triplet of eighth notes (2, 3, 4) marked with an accent (>) and labeled 'glissé'. The second measure is a triplet of eighth notes (2, 3, 4) marked with an accent (>) and labeled 'glissé'. The third measure is a triplet of eighth notes (2, 3, 4) marked with an accent (>) and labeled 'glissé'. The fourth measure is a triplet of eighth notes (2, 3, 4) marked with an accent (>) and labeled 'glissé'.

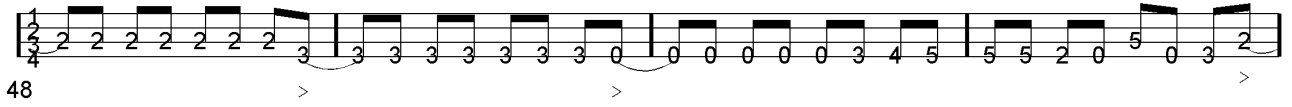
Couplet 2

Musical notation for the second couplet. It consists of four measures in 2/4 time. The first measure contains eighth notes (2, 2, 2, 2, 2, 2, 2, 3) with an accent (>). The second measure contains eighth notes (3, 3, 3, 3, 3, 3, 3, 0) with an accent (>). The third measure contains eighth notes (0, 0, 0, 0, 0, 3, 4, 5) with an accent (>). The fourth measure contains eighth notes (5, 5, 5, 5, 5, 0, 3, 2) with an accent (>).

Musical notation for the continuation of the second couplet. It consists of four measures in 2/4 time. The first measure contains eighth notes (2, 2, 2, 2, 2, 2, 2, 3) with an accent (>). The second measure contains eighth notes (3, 3, 3, 3, 3, 3, 3, 0) with an accent (>). The third measure contains eighth notes (0, 0, 0, 0, 0, 3, 4, 5) with an accent (>). The fourth measure contains eighth notes (5, 5, 5, 5, 5, 0, 3, 2) with an accent (>).

Tablature basse page 2:

Pré-Refrain 2



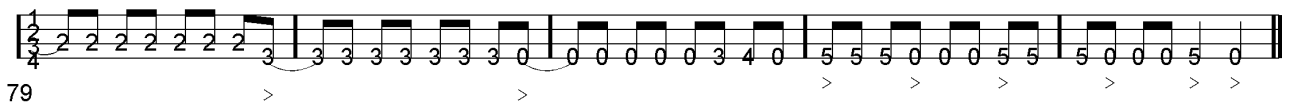
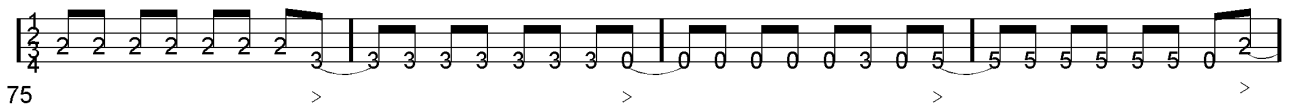
Refrain 2



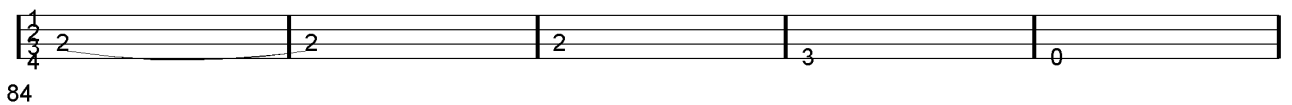
Pont 1



Solo guitare



Pont 2



Partition basse page 1:

Cinderella Shake Me

Intro Batterie

1  3 

5  glissé

3x Intro (suite) / Couplet 1

9  glissé glissé glissé glissé

Pré-Refrain 1

21 

25 

Refrain 1

29 

33 

Gimmick

36  glissé glissé glissé glissé

Couplet 2

40 

44 

Partition basse page 3:

89 

Pré-Refrain 3

90 

94 

98 

Refrain 3

103 

107 

ad lib. Final

111 

115 

[Playback-sans-la-basse](#) [playback basse solo](#) [playback batterie solo](#) [playback basse batterie](#)

Partition batterie version 1 page 1:

♩ = 135

Cinderella Shake Me

Intro batterie

Intro

1 3

crash 1ère fois seulement

5

♩ Couplets 1 / 2

13 2ème fois

Pré-Refrains 1 / 2

21 2ème fois

Refrain 1

29

33

Gimmick

36

55

[Playback-sans-batterie](#) [playback basse solo](#) [playback batterie solo](#) [playback basse batterie](#)

Partition batterie version 1 page 2:

Refrain 2

57

61

Pont 1

65

68

Solo guitare

71

75

79

Pont 2

84

87

Partition batterie version 1 page 3:

Pré-Refrain 3

90

94

98

Refrain 3

103

107

Final

ad lib
111

115

[Playback-sans-batterie](#) [playback basse solo](#) [playback batterie solo](#) [playback basse batterie](#)

Partition batterie version 2 page 1:

♩ = 135

Cinderella Shake Me

Intro batterie

Intro

Measures 1-3: Musical notation for the first three measures of the 'Intro batterie' section. Measure 1 starts with a '1' below the staff. Measure 3 starts with a '3' below the staff. The notation includes various rhythmic values and asterisks above notes.

Measures 4-6: Musical notation for the next three measures. Measure 4 starts with a '5' below the staff. The notation includes rhythmic values and asterisks above notes.

Measures 7-9: Musical notation for the next three measures. Measure 7 starts with a '9' below the staff. The notation includes rhythmic values and asterisks above notes.

♩ Couplets 1 / 2

Measures 10-12: Musical notation for the first two measures of the 'Couplets 1 / 2' section. Measure 10 starts with a '13' below the staff. The notation includes first and second endings, indicated by '1.' and '2.' above the staff.

2ème fois

Pré-Refrains 1 / 2

Measures 13-20: Musical notation for the 'Pré-Refrains 1 / 2' section. Measure 13 starts with a '21' below the staff. The notation includes rhythmic values and asterisks above notes.

2ème fois

Measures 21-24: Musical notation for the next four measures. Measure 21 starts with a '25' below the staff. The notation includes rhythmic values and asterisks above notes.

Refrain 1

Measures 25-31: Musical notation for the first six measures of the 'Refrain 1' section. Measure 25 starts with a '29' below the staff. The notation includes rhythmic values and asterisks above notes.

Measures 32-35: Musical notation for the next four measures. Measure 32 starts with a '32' below the staff. The notation includes rhythmic values and asterisks above notes.

Gimmick

Measures 36-38: Musical notation for the 'Gimmick' section. Measure 36 starts with a '36' below the staff. The notation includes rhythmic values and asterisks above notes.

Partition batterie version 2 page 2:

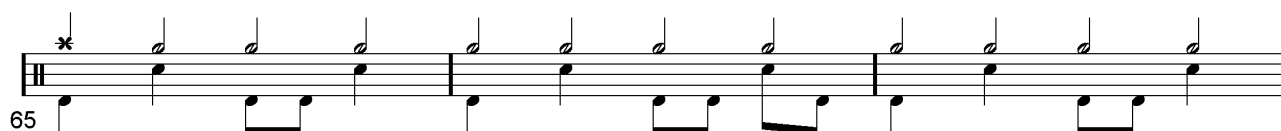
55 


Refrain 2

57 

61 

Pont 1

65 

68 

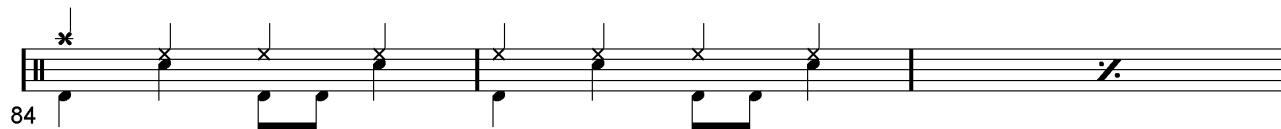
Solo guitare

71 

75 

79 

Pont 2

84 

Écriture batterie:

bd 1 bd 2 rim-shot sd

HH Pied HH fermée HH entrouverte HH ouverte

tom 1 tom 2 tom 3 tom 4

accent note mutée crash cloche

ride dôme de cymbale chinoise splash

fla note muette

Detailed description: The image displays six horizontal musical staves, each representing a different drum sound. The first staff shows 'bd 1' (bass drum 1) with a quarter note and a vertical stem ending in an asterisk. 'bd 2' (bass drum 2) is a quarter note with a vertical stem ending in an 'x'. 'rim-shot' is a quarter note with a vertical stem ending in an asterisk. 'sd' (snare drum) is a quarter note with a vertical stem ending in a circle with an asterisk. The second staff shows 'HH Pied' (hi-hat closed) with a quarter note and a vertical stem ending in an 'x'. 'HH fermée' (hi-hat closed) is a quarter note with a vertical stem ending in an 'x'. 'HH entrouverte' (hi-hat open) is a quarter note with a vertical stem ending in a circle with an asterisk. 'HH ouverte' (hi-hat open) is a quarter note with a vertical stem ending in a circle with an asterisk. The third staff shows 'tom 1', 'tom 2', 'tom 3', and 'tom 4' as quarter notes with vertical stems. The fourth staff shows 'accent' as a quarter note with an accent (>) above it. 'note mutée' (muted note) is a quarter note with a vertical stem ending in an asterisk and a dot above it. 'crash' is a quarter note with a vertical stem ending in an asterisk. 'cloche' (bell) is a quarter note with a vertical stem ending in an 'x'. The fifth staff shows 'ride' as a quarter note with a vertical stem ending in an asterisk. 'dôme de cymbale' (cymbal dome) is a quarter note with a vertical stem ending in a diamond. 'chinoise' (chinese) is a quarter note with a vertical stem ending in a triangle. 'splash' is a quarter note with a vertical stem ending in a triangle. The sixth staff shows 'fla' (flam) as a pair of eighth notes with a vertical stem ending in an asterisk. 'note muette' (muted note) is a quarter note with a vertical stem ending in a vertical line.