

Buddy Holly & The Crickets That'll Be The Day:

Table des matières

Introduction:.....	2
Tablature basse page 1:.....	3
Tablature basse page 2:.....	4
Partition basse page 1:.....	5
Partition basse page 2:.....	6
Partition batterie page 1:.....	7
Partition batterie page 2:.....	8
Écriture batterie:.....	9

Introduction:

Attention à la mise en place de la 4ème mesure du refrain 4 (en fait on joue une suite de croches binaires dans un rythme ternaire) !

la seule difficulté pour la basse c'est l'alternance de notes jouées et de silences et de bien mettre en place les contretemps.

Pour la partition il y a 3 dièses à la clef: le Do#, le Fa# et le Sol#.

Pour la batterie les plus grosses difficultés ce sont l'alternance entre la charley et la cymbale au début du morceau, la mise en place des breaks à la caisse claire et les crescendos sur certains breaks.

Voici le lien pour écouter le morceau:

[buddy holly & the crickets that'll be the day](#)

Bon courage à tous !

Tablature basse page 1:

Buddy Holly & The Crickets That'll Be The Day

Intro

1

The intro consists of two measures. The first measure is a whole rest. The second measure contains a bass line with a dotted quarter note on the 6th fret, followed by an eighth note on the 7th fret, and another eighth note on the 7th fret.

Refrain 1

3

The first measure of the refrain has a bass line with a dotted quarter note on the 5th fret, followed by an eighth note on the 7th fret, and another eighth note on the 7th fret. The second measure is a whole rest. The third measure has a bass line with a dotted quarter note on the 5th fret, followed by an eighth note on the 7th fret, and another eighth note on the 7th fret. The fourth measure is a whole rest.

7

The fifth measure of the refrain has a bass line with a dotted quarter note on the 5th fret, followed by an eighth note on the 4th fret, and another eighth note on the 4th fret. The sixth measure has a bass line with a dotted quarter note on the 5th fret, followed by an eighth note on the 4th fret, and another eighth note on the 4th fret. The seventh measure has a bass line with a dotted quarter note on the 7th fret, followed by an eighth rest, and another eighth rest. The eighth measure has a bass line with a dotted quarter note on the 7th fret, followed by an eighth rest, and another eighth rest.

Couplet 1

11

The first measure of the couplet has a bass line with a dotted quarter note on the 5th fret, followed by an eighth note on the 4th fret, and another eighth note on the 4th fret. The second measure has a bass line with a dotted quarter note on the 7th fret, followed by an eighth note on the 7th fret, and another eighth note on the 7th fret. The third measure has a bass line with a dotted quarter note on the 5th fret, followed by an eighth note on the 4th fret, and another eighth note on the 4th fret. The fourth measure has a bass line with a dotted quarter note on the 7th fret, followed by an eighth note on the 7th fret, and another eighth note on the 7th fret.

15

The fifth measure of the couplet has a bass line with a dotted quarter note on the 5th fret, followed by an eighth note on the 4th fret, and another eighth note on the 4th fret. The sixth measure has a bass line with a dotted quarter note on the 7th fret, followed by an eighth note on the 7th fret, and another eighth note on the 7th fret. The seventh measure has a bass line with a dotted quarter note on the 9th fret, followed by an eighth note on the 7th fret, and another eighth note on the 7th fret. The eighth measure has a bass line with a dotted quarter note on the 6th fret, followed by an eighth note on the 7th fret, and another eighth note on the 7th fret.

Refrain 2

19

The first measure of the refrain has a bass line with a dotted quarter note on the 5th fret, followed by an eighth note on the 7th fret, and another eighth note on the 7th fret. The second measure is a whole rest. The third measure has a bass line with a dotted quarter note on the 5th fret, followed by an eighth note on the 7th fret, and another eighth note on the 7th fret. The fourth measure is a whole rest.

23

The fifth measure of the refrain has a bass line with a dotted quarter note on the 5th fret, followed by an eighth note on the 7th fret, and another eighth note on the 7th fret. The sixth measure is a whole rest. The seventh measure has a bass line with a dotted quarter note on the 7th fret, followed by an eighth rest, and another eighth rest. The eighth measure has a bass line with a dotted quarter note on the 7th fret, followed by an eighth rest, and another eighth rest.

Chorus

27

The first measure of the chorus has a bass line with a dotted quarter note on the 4th fret, followed by an eighth note on the 7th fret, and another eighth note on the 7th fret. The second measure has a bass line with a dotted quarter note on the 7th fret, followed by an eighth note on the 7th fret, and another eighth note on the 7th fret. The third measure has a bass line with a dotted quarter note on the 4th fret, followed by an eighth note on the 7th fret, and another eighth note on the 7th fret. The fourth measure has a bass line with a dotted quarter note on the 7th fret, followed by an eighth note on the 7th fret, and another eighth note on the 7th fret.

31

The fifth measure of the chorus has a bass line with a dotted quarter note on the 5th fret, followed by an eighth note on the 7th fret, and another eighth note on the 4th fret. The sixth measure has a bass line with a dotted quarter note on the 5th fret, followed by an eighth note on the 7th fret, and another eighth note on the 7th fret. The seventh measure has a bass line with a dotted quarter note on the 5th fret, followed by an eighth note on the 7th fret, and another eighth note on the 4th fret. The eighth measure has a bass line with a dotted quarter note on the 5th fret, followed by an eighth note on the 7th fret, and another eighth note on the 7th fret.

Tablature basse page 2:



35

Refrain 3

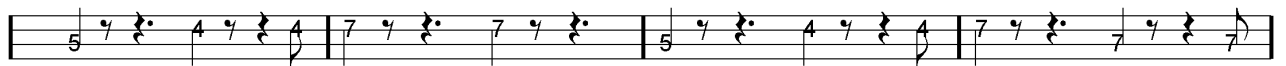


39



43

Couplet 2



47



51

Refrain 4



55

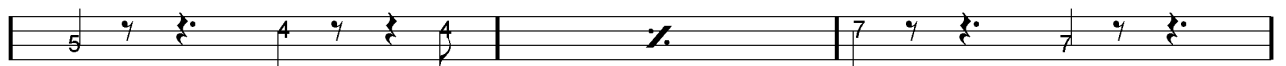


59

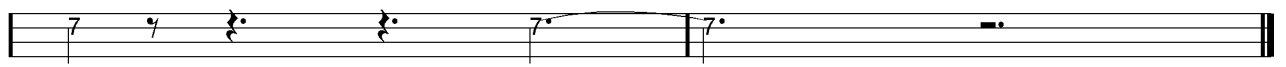
Final



63



67



70

Partition basse page 1:

Buddy Holly & The Crickets That'll Be The Day

Intro

1

Refrain 1

3

7

Couplet 1

11

15

Refrain 2

19

23

Chorus

27

31

Partition basse page 2:

35

Refrain 3

39

43

Couplet 2

47

51

Refrain 4

55

59

Final

63

67

70

Partition batterie page 1:

Buddy Holly & The Crickets That'll Be The Day

Intro

1

Refrain 1

3

7

Couplet 1

11

15

Refrain 2

19

23

Chorus

27

31

35

Partition batterie page 2:

Refrain 3

39

43

Couplet 2

47

51

Refrain 4

55

59

Final

63

67

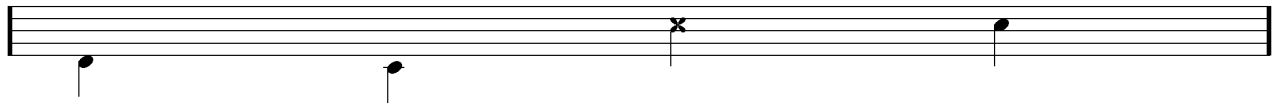
Écriture batterie:

bd 1

bd 2

rim-shot

sd

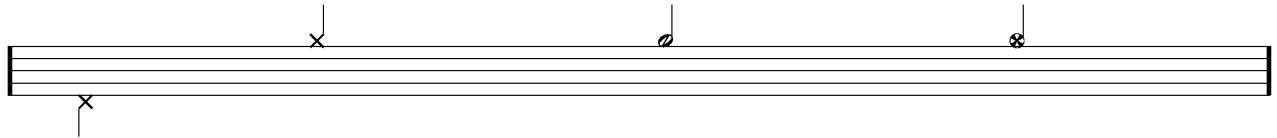


HH Pied

HH fermée

HH entrouverte

HH ouverte

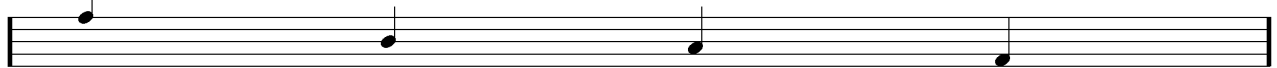


tom 1

tom 2

tom 3

tom 4

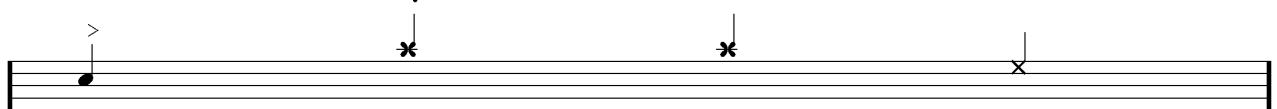


accent

note mutée

crash

cloche

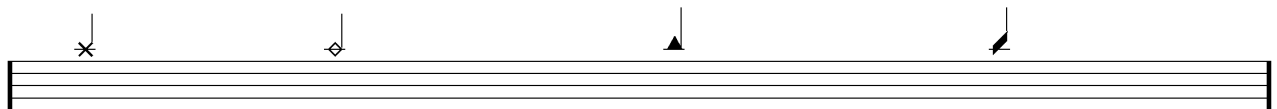


ride

dôme de cymbale

chinoise

splash



flas

note muette

