

**Buddy Holly & The Crickets Peggy Sue:**

**Table des matières**

Introduction:.....2  
Tablature basse page 1:.....3  
Tablature basse page 2:.....4  
Partition basse page 1:.....5  
Partition basse page 2:.....6  
Partition batterie page 1:.....7  
Partition batterie page 2:.....8  
Écriture batterie:.....9

### **Introduction:**

Aucune difficulté particulière à signaler pour cette ligne de basse en dehors du tempo qui est rapide mais vu qu'on joue des noires et juste quelques croches tout au long du morceau ça ne peut pas vraiment être considéré comme une difficulté.

Je vous mets la partition de batterie à titre indicatif car elle est extraite d'un fichier midi et elle me semble bien trop chargée pour être un relevé de la version originale, les difficultés sont les suivantes: des contretemps à la grosse caisse et des breaks en doubles-croches.

Voici le lien pour écouter le morceau:

[Buddy Holly & The Crickets Peggy Sue](#)

Bon courage à tous !

# Tablature basse page 1:

## Buddy Holly Peggy Sue

♩ = 150

Intro

1 4 5 5 5 5 | 7 5 7 7 | 5 5 5 5 | 5 5 7 7 ||

1

Couplet 1

5 7 5 7 | 5 5 5 5 | 5 7 5 5 | 5 7 5 7 ||

5

5 5 5 5 | / | 5 5 5 5 | 7 5 7 7 ||

9

7 7 7 7 | 5 5 5 5 | 5 5 5 5 | 5 5 7 7 ||

13

Refrain 1

5 7 5 7 | / | 8 8 8 8 | 5 7 5 7 ||

17

5 5 5 5 | 5 5 5 5 5 5 | 5 7 5 5 | 5 5 7 7 ||

21

7 7 7 7 | 5 5 5 5 | 5 5 5 5 | 5 5 7 7 ||

25

Solo Guitare

5 7 5 7 7 7 | 5 5 5 5 | 5 7 5 5 | 5 5 5 5 ||

29

5 5 5 5 | / | 5 7 5 7 | 5 7 5 7 ||

33

7 7 7 7 | 5 5 5 5 | 5 5 5 5 | 5 5 7 7 ||

37

Refrain 2

5 7 5 7 | / | 8 8 8 8 | 5 7 5 7 ||

41

## Tablature basse page 2:



45



49

Final



53



57



61



65

**Partition basse page 1:**  
**Buddy Holly Peggy Sue**

♩ = 150

Intro



Couplet 1



Refrain 1



Solo Guitare



Refrain 2



**Partition basse page 2:**

45 

49 

Final

53 

57 

61 

Fin

65 

# Partition batterie page 1:

## Buddy Holly Peggy Sue

♩ = 150

Intro

Musical notation for the Intro section, starting at measure 1. The notation is on a single staff with a treble clef and a 4/4 time signature. It features a series of eighth notes with 'x' marks above them, indicating a specific drum pattern. The pattern consists of a steady eighth-note pulse with occasional accents and rests. The section ends with a double bar line.

Couplet 1

Musical notation for the first line of the Couplet 1 section, starting at measure 5. The notation is on a single staff with a treble clef and a 4/4 time signature. It features a series of eighth notes with 'x' marks above them, indicating a specific drum pattern. The pattern consists of a steady eighth-note pulse with occasional accents and rests. The section ends with a double bar line.

Musical notation for the second line of the Couplet 1 section, starting at measure 9. The notation is on a single staff with a treble clef and a 4/4 time signature. It features a series of eighth notes with 'x' marks above them, indicating a specific drum pattern. The pattern consists of a steady eighth-note pulse with occasional accents and rests. The section ends with a double bar line.

Musical notation for the third line of the Couplet 1 section, starting at measure 13. The notation is on a single staff with a treble clef and a 4/4 time signature. It features a series of eighth notes with 'x' marks above them, indicating a specific drum pattern. The pattern consists of a steady eighth-note pulse with occasional accents and rests. The section ends with a double bar line.

Refrain 1

Musical notation for the first line of the Refrain 1 section, starting at measure 17. The notation is on a single staff with a treble clef and a 4/4 time signature. It features a series of eighth notes with 'x' marks above them, indicating a specific drum pattern. The pattern consists of a steady eighth-note pulse with occasional accents and rests. The section ends with a double bar line.

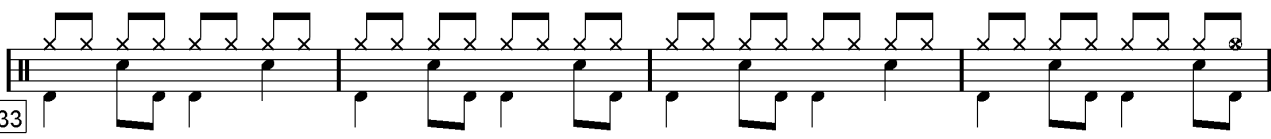
Musical notation for the second line of the Refrain 1 section, starting at measure 21. The notation is on a single staff with a treble clef and a 4/4 time signature. It features a series of eighth notes with 'x' marks above them, indicating a specific drum pattern. The pattern consists of a steady eighth-note pulse with occasional accents and rests. The section ends with a double bar line.

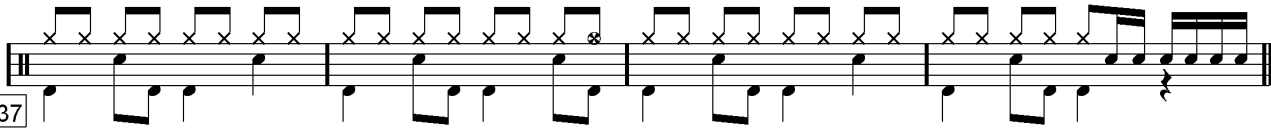
Musical notation for the third line of the Refrain 1 section, starting at measure 25. The notation is on a single staff with a treble clef and a 4/4 time signature. It features a series of eighth notes with 'x' marks above them, indicating a specific drum pattern. The pattern consists of a steady eighth-note pulse with occasional accents and rests. The section ends with a double bar line.

Solo Guitare

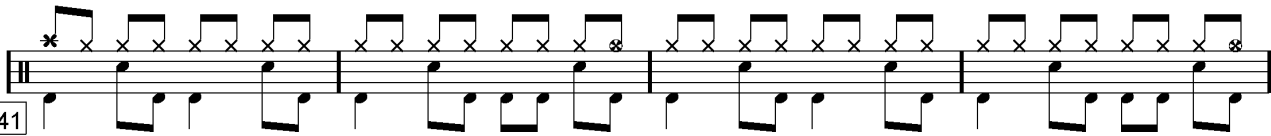
Musical notation for the Solo Guitare section, starting at measure 29. The notation is on a single staff with a treble clef and a 4/4 time signature. It features a series of eighth notes with 'x' marks above them, indicating a specific drum pattern. The pattern consists of a steady eighth-note pulse with occasional accents and rests. The section ends with a double bar line.

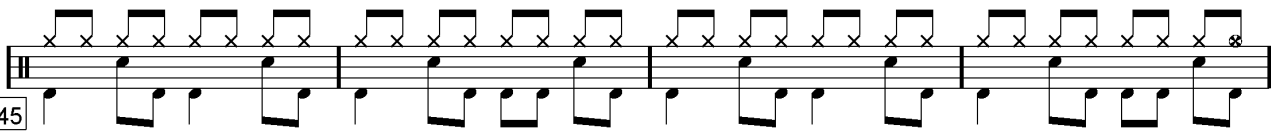
**Partition batterie page 2:**

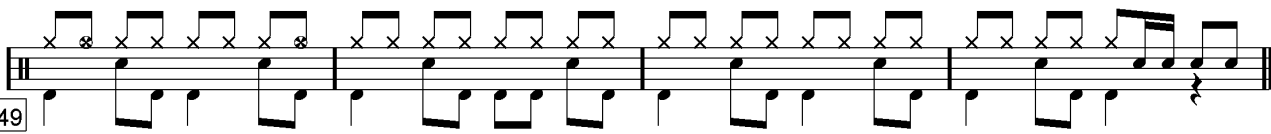
33  Musical notation for measures 33-36. The top staff contains a series of 'x' marks representing cymbal hits. The bottom staff contains a bass drum pattern of quarter notes.

37  Musical notation for measures 37-40. The top staff contains a series of 'x' marks representing cymbal hits. The bottom staff contains a bass drum pattern of quarter notes.

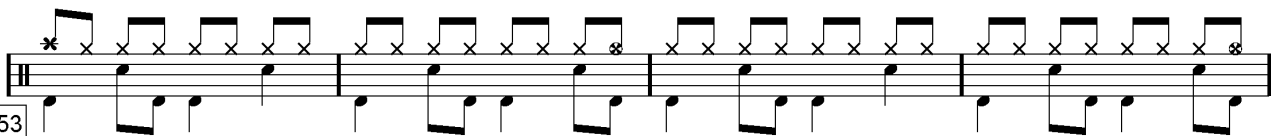
Refrain 2

41  Musical notation for measures 41-44. The top staff contains a series of 'x' marks representing cymbal hits. The bottom staff contains a bass drum pattern of quarter notes.

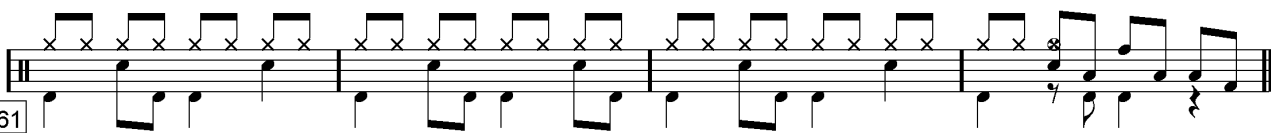
45  Musical notation for measures 45-48. The top staff contains a series of 'x' marks representing cymbal hits. The bottom staff contains a bass drum pattern of quarter notes.

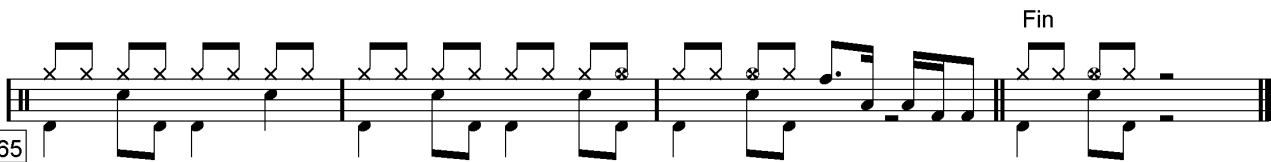
49  Musical notation for measures 49-52. The top staff contains a series of 'x' marks representing cymbal hits. The bottom staff contains a bass drum pattern of quarter notes.

Final

53  Musical notation for measures 53-56. The top staff contains a series of 'x' marks representing cymbal hits. The bottom staff contains a bass drum pattern of quarter notes.

57  Musical notation for measures 57-60. The top staff contains a series of 'x' marks representing cymbal hits. The bottom staff contains a bass drum pattern of quarter notes.

61  Musical notation for measures 61-64. The top staff contains a series of 'x' marks representing cymbal hits. The bottom staff contains a bass drum pattern of quarter notes.

65  Musical notation for measures 65-68. The top staff contains a series of 'x' marks representing cymbal hits. The bottom staff contains a bass drum pattern of quarter notes. The word "Fin" is written above the final measure.



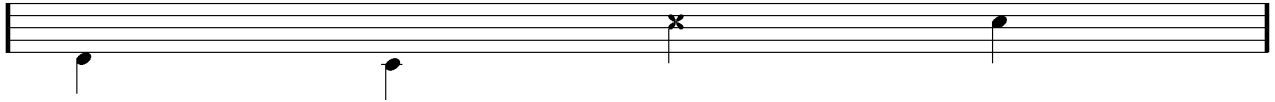
## Écriture batterie:

bd 1

bd 2

rim-shot

sd

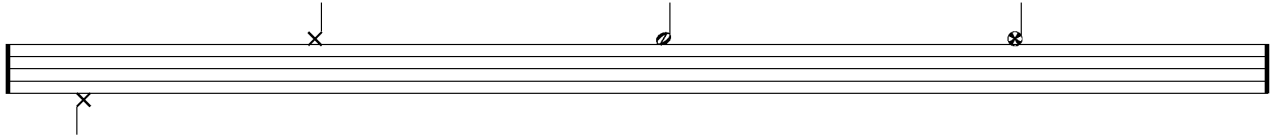


HH Pied

HH fermée

HH entrouverte

HH ouverte

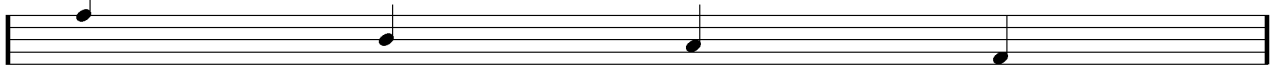


tom 1

tom 2

tom 3

tom 4

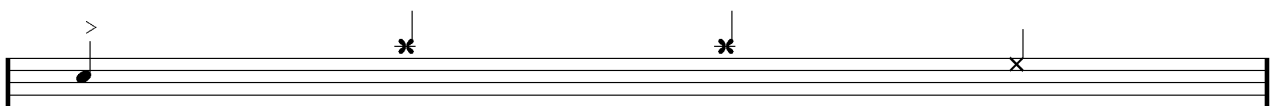


accent

note mutée

crash

cloche

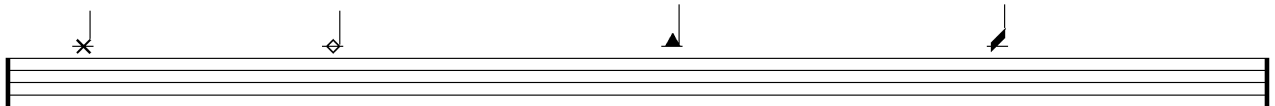


ride

dôme de cymbale

chinoise

splash



flas

note muette

